

Excellent Hunting Tract

32± Acres in Lincoln County, MS



\$124,900

This property has so many possibilities! This 32± acre hunting tract is conveniently located on Peyton Lane in Lincoln County, MS, minutes from Loyd Star Schools and The Homochitto National Forest. Two sides of this property have road frontage, allowing multiple locations for a home or campsite. Water and power are also both available nearby. The young pines are getting some size and are ready for a thinning. A small seasonal creek runs through the property, and the deer sign is there as well. With all that this property offers, it should not last long. Call Chad Wilson to schedule your private showing!

Directions from I-55 in Brookhaven, MS: Take Exit 42 toward North Brookhaven. Travel west toward Dunn-Ratcliff Rd NW/Union Street Extended NE for 2.8 miles. Turn right onto MS-550 W, and travel 8.4 miles. Turn left onto Peyton Lane NW. After .4 miles, the property will be on the right. [Google Map Link](#)



**CHAD
WILSON**
REALTOR®

Office: 601.898.2772

Cell: 601.750.1970

Chad@TomSmithLand.com



A Real Estate Expert You Can Trust

TomSmithLandandHomes.com

Information is believed to be accurate but not guaranteed.





CHAD WILSON
REALTOR®

Office: 601.898.2772

Cell: 601.750.1970

Chad@TomSmithLand.com

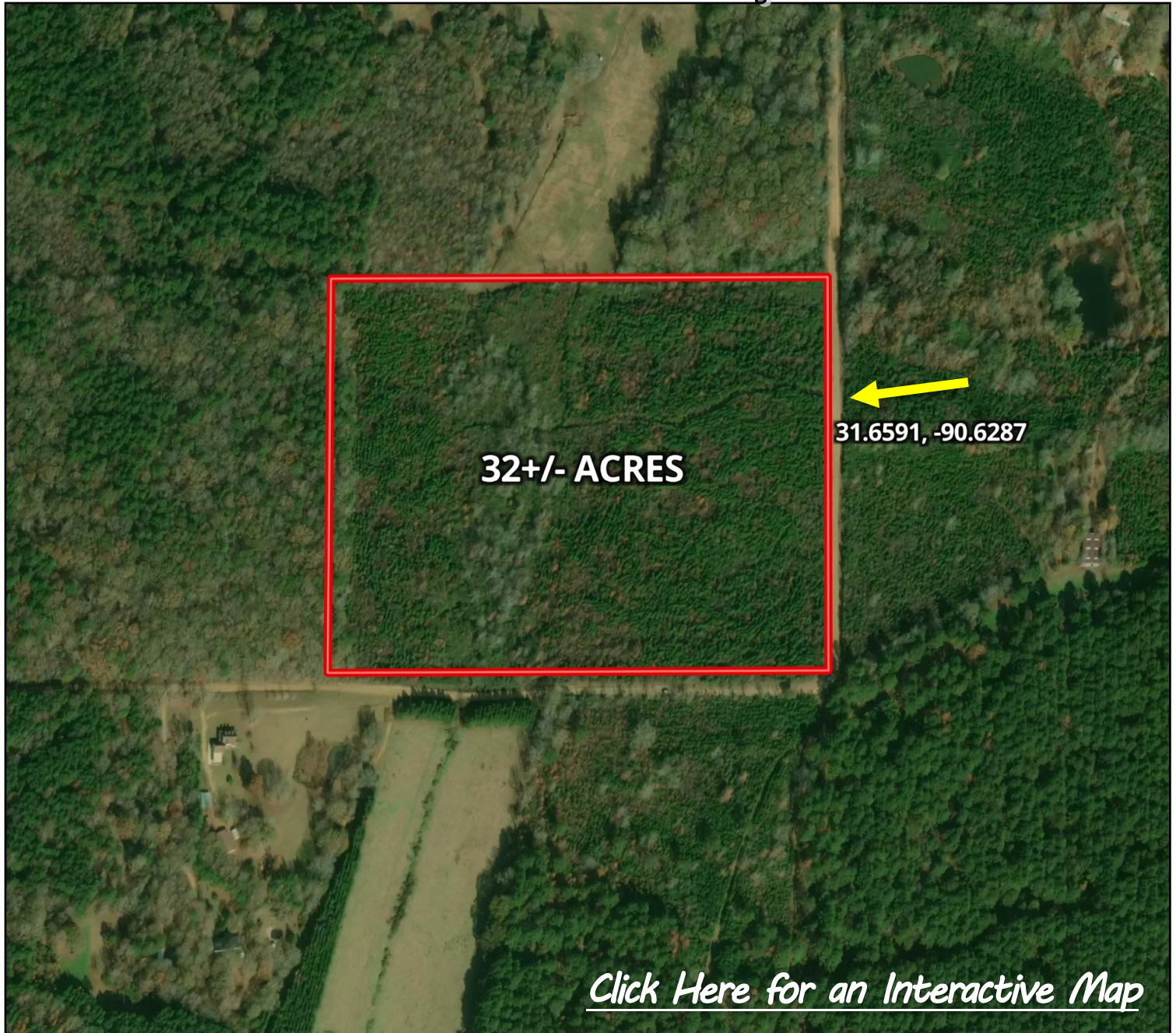


A Real Estate Expert You Can Trust
TomSmithLandandHomes.com

Information is believed to be accurate but not guaranteed.



Aerial Map



CHAD WILSON

REALTOR®

Office: 601.898.2772

Cell: 601.750.1970

Chad@TomSmithLand.com



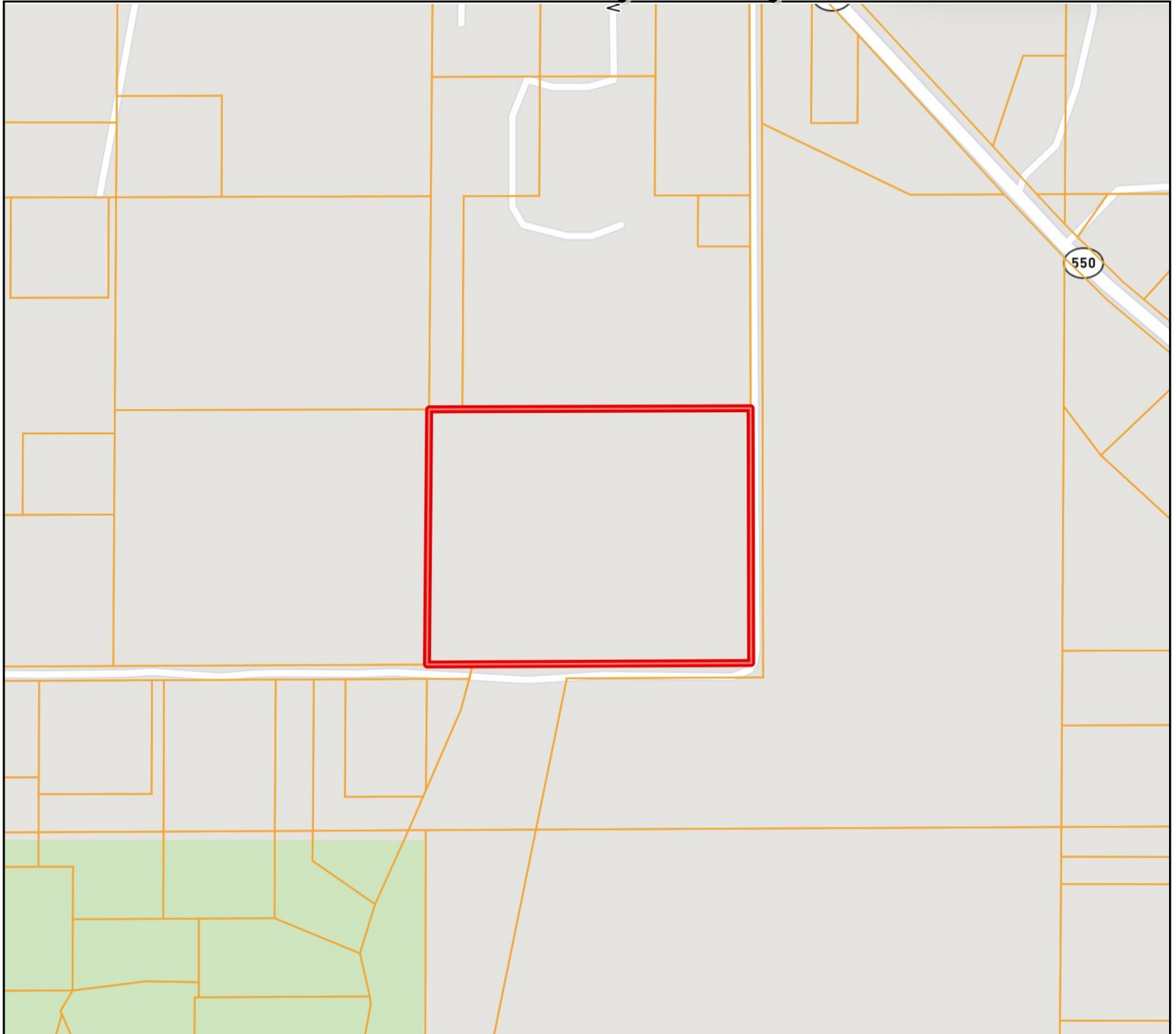
A Real Estate Expert You Can Trust

TomSmithLandandHomes.com

Information is believed to be accurate but not guaranteed.



Ownership Map



CHAD WILSON

REALTOR®

Office: 601.898.2772

Cell: 601.750.1970

Chad@TomSmithLand.com



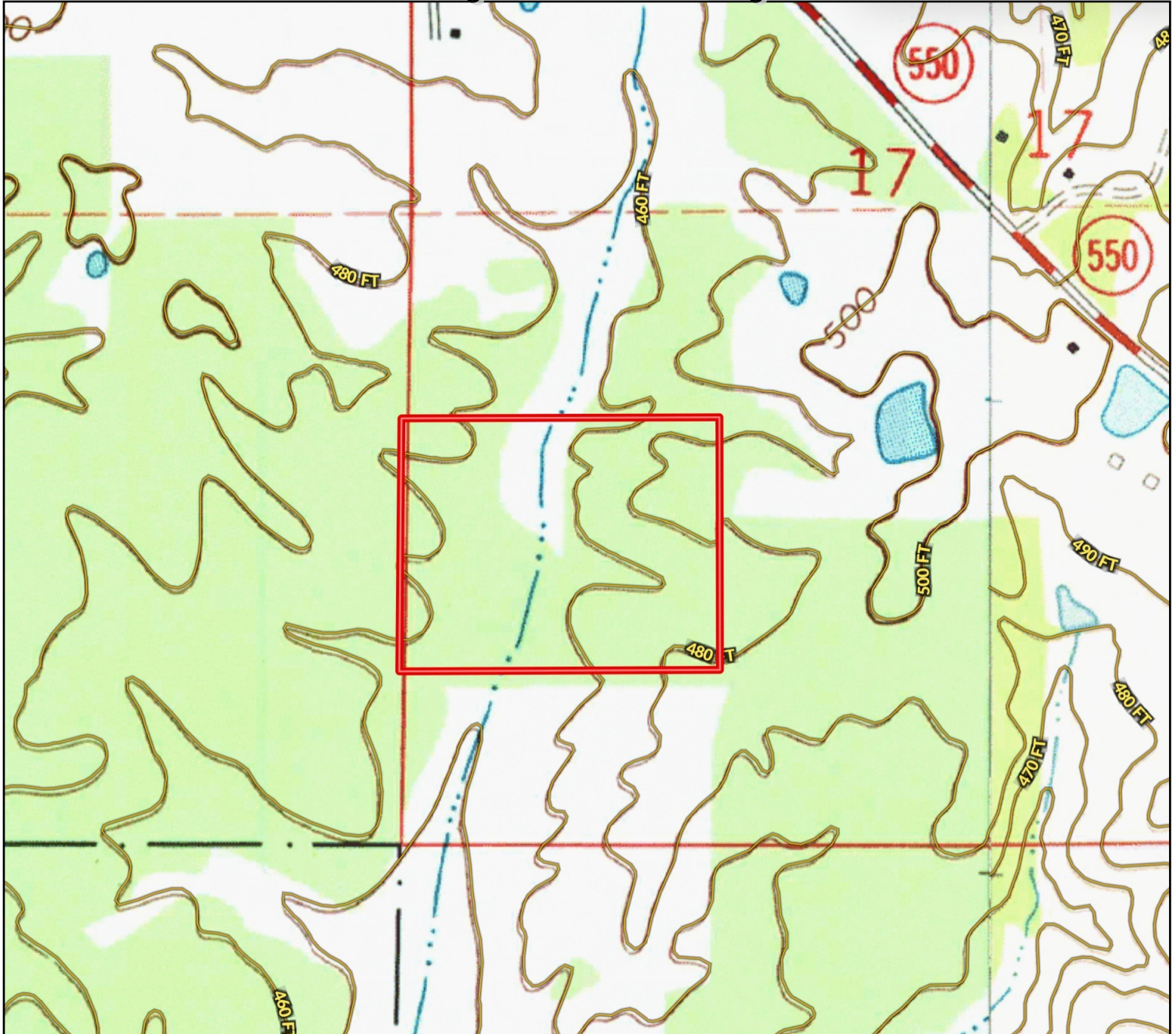
A Real Estate Expert You Can Trust

TomSmithLandandHomes.com

Information is believed to be accurate but not guaranteed.



Topo Map



CHAD WILSON

REALTOR®

Office: 601.898.2772

Cell: 601.750.1970

Chad@TomSmithLand.com



A Real Estate Expert You Can Trust

TomSmithLandandHomes.com

Information is believed to be accurate but not guaranteed.



Soil Map



SOIL CODE	SOIL DESCRIPTION	ACRES	%	CPI	NCCPI	CAP
RuD2	Ruston soils, 8 to 12 percent slopes, eroded (smithdale)	14.84	44.96	0	53	4e
Fm	Falaya silt loam, local alluvium (oaklimeter)	8.19	24.81	0	74	2w
PrD2	Providence silt loam, 8 to 12 percent slopes, eroded	6.6	19.99	0	31	4e
BuB2	Bude silt loam, 2 to 5 percent slopes, eroded	1.61	4.88	0	48	3e
RuE2	Ruston soils, 12 to 17 percent slopes, eroded (smithdale)	0.89	2.7	0	50	6e
PrB2	Providence silt loam, 2 to 5 percent slopes, eroded	0.87	2.64	0	28	2e

CHAD WILSON

REALTOR®

Office: 601.898.2772

Cell: 601.750.1970

Chad@TomSmithLand.com



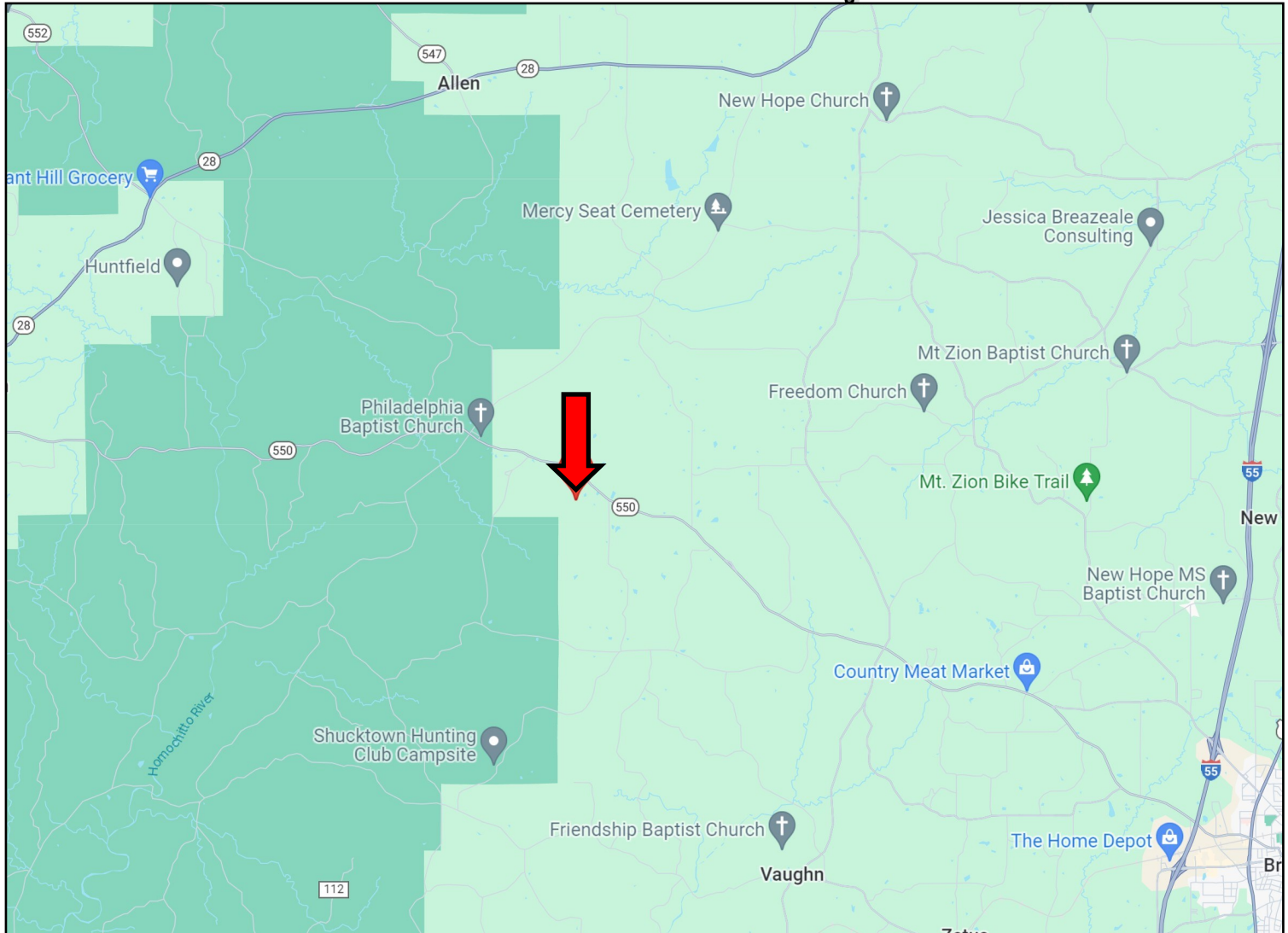
A Real Estate Expert You Can Trust

TomSmithLandandHomes.com

Information is believed to be accurate but not guaranteed.



Directional Map



Directions from I-55 in Brookhaven, MS: Take Exit 42 toward North Brookhaven. Travel west toward Dunn-Ratcliff Rd NW/Union Street Extended NE for 2.8 miles. Turn right onto MS-550 W, and travel 8.4 miles. Turn left onto Peyton Lane NW. After .4 miles, the property will be on the right. [Google Map Link](#)



**CHAD
WILSON**
REALTOR®

Office: 601.898.2772
Cell: 601.750.1970
Chad@TomSmithLand.com



A Real Estate Expert You Can Trust

TomSmithLandandHomes.com

Information is believed to be accurate but not guaranteed.

