

HUNTING PARADISE WITH LODGE

185± Acres in Sharkey County, MS



\$799,850

This 185± acre property in Sharkey County is the perfect tract for you and your family. This property consists of 100± acres of hardwood CRP and is manicured for your hunting pleasure. There are five established food plots with shooting houses and an excellent road system, including bridges and culverts, to provide easy passage and access throughout the property. The hardwoods are all producing food for the deer, and there are absolutely some trophies on this property! The current owner is strictly a whitetail trophy hunter and does not prepare the property for ducks. Still, there is a complete levee and riser system that encompasses approximately 20± acres that will make some of the best waterfowl habitats there is. The previous owner was an avid duck hunter and enjoyed years of successfully harvesting ducks on this property! The lodge consists of three bedrooms, two baths, a kitchen, and a family room. There is also a two-car carport and a nice open two-acre lot that provides plenty of parking for your guests, equipment, and storage. This is a property for the avid outdoorsman! Call Tom Smith today to schedule your private showing!



Call The Land Man Today!

TOM SMITH, ALC®, BROKER
Tom@TomSmithLand.com
601.898.2772 **office** | 601.454.9397 **cell**

112 Village Blvd, Madison, MS 39110



Expect More. Get More.

TomSmithLandandHomes.com

Information is believed to be accurate but not guaranteed.



TOM SMITH, ALC®, BROKER
 Tom@TomSmithLand.com
 601.898.2772 **office** | 601.454.9397 **cell**



TomSmithLandandHomes.com

Information is believed to be accurate but not guaranteed.



TOM SMITH, ALC®, BROKER
 Tom@TomSmithLand.com
 601.898.2772 **office** | 601.454.9397 **cell**



TomSmithLandandHomes.com

Information is believed to be accurate but not guaranteed.



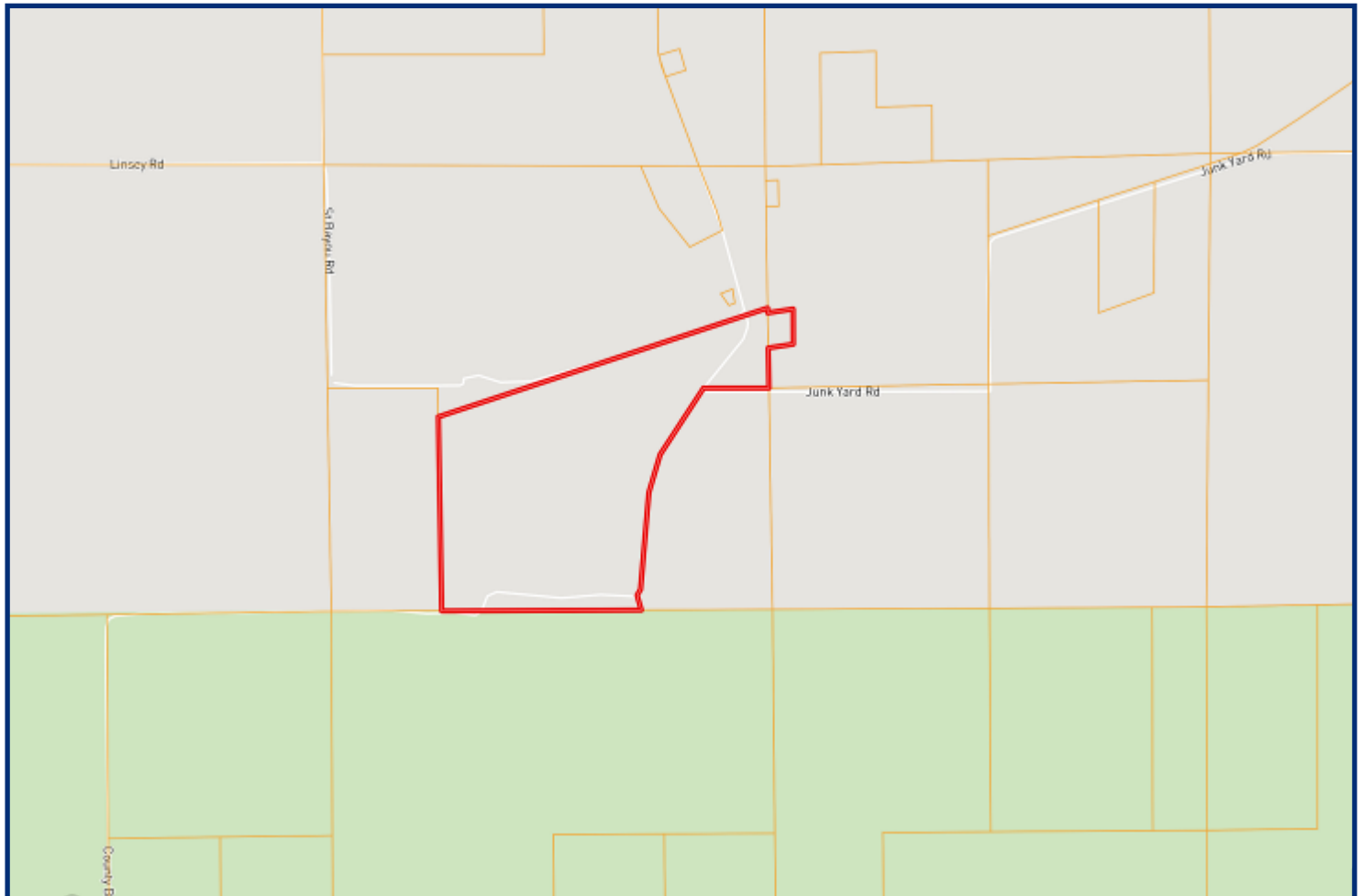
TOM SMITH, ALC®, BROKER
 Tom@TomSmithLand.com
 601.898.2772 **office** | 601.454.9397 **cell**



TomSmithLandandHomes.com

Information is believed to be accurate but not guaranteed.

OWNERSHIP MAP



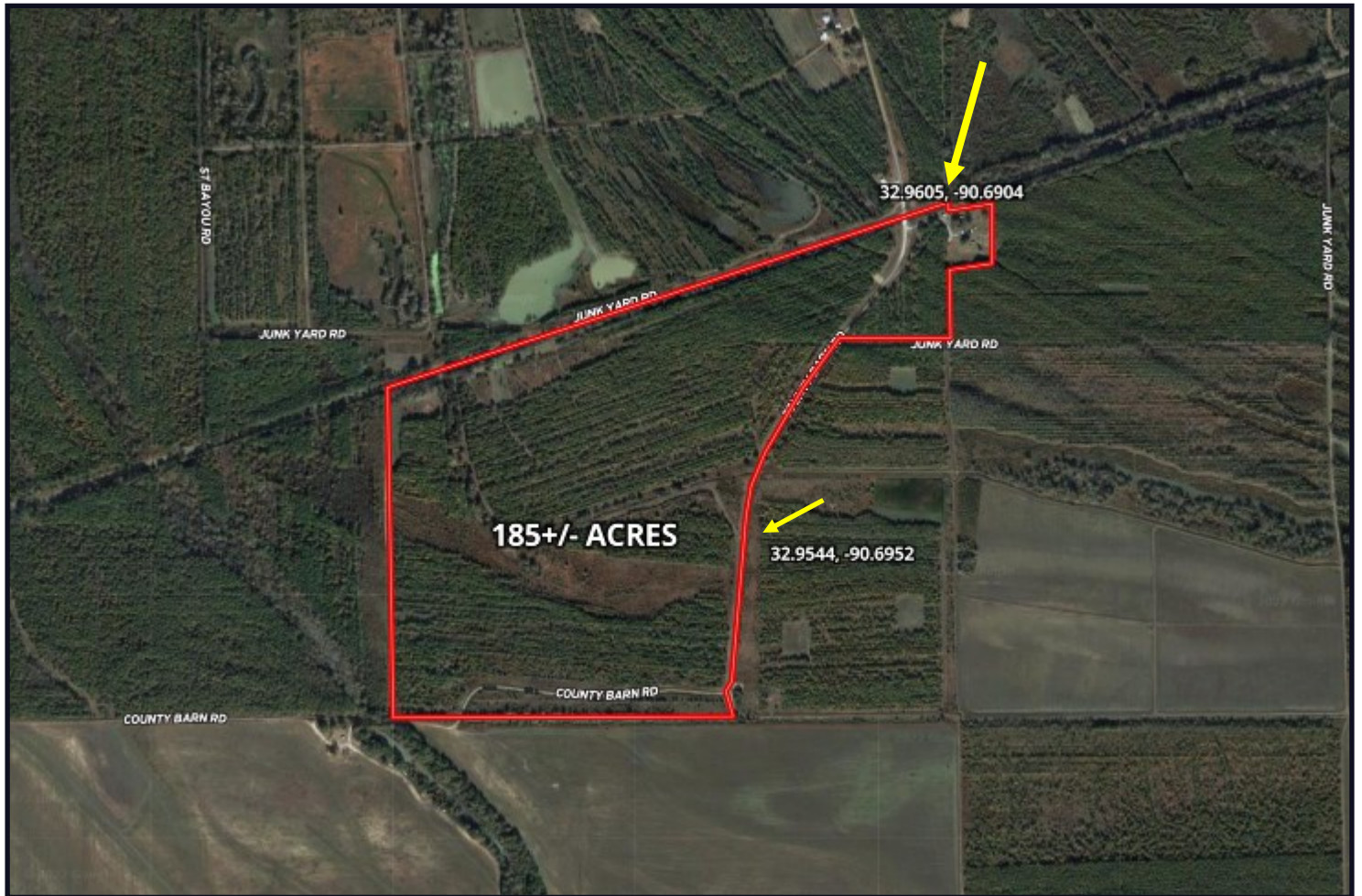
TOM SMITH, ALC®, BROKER
Tom@TomSmithLand.com
601.898.2772 **office** | 601.454.9397 **cell**



TomSmithLandandHomes.com

Information is believed to be accurate but not guaranteed.

AERIAL MAP



CLICK [HERE](#) FOR AN INTERACTIVE MAP



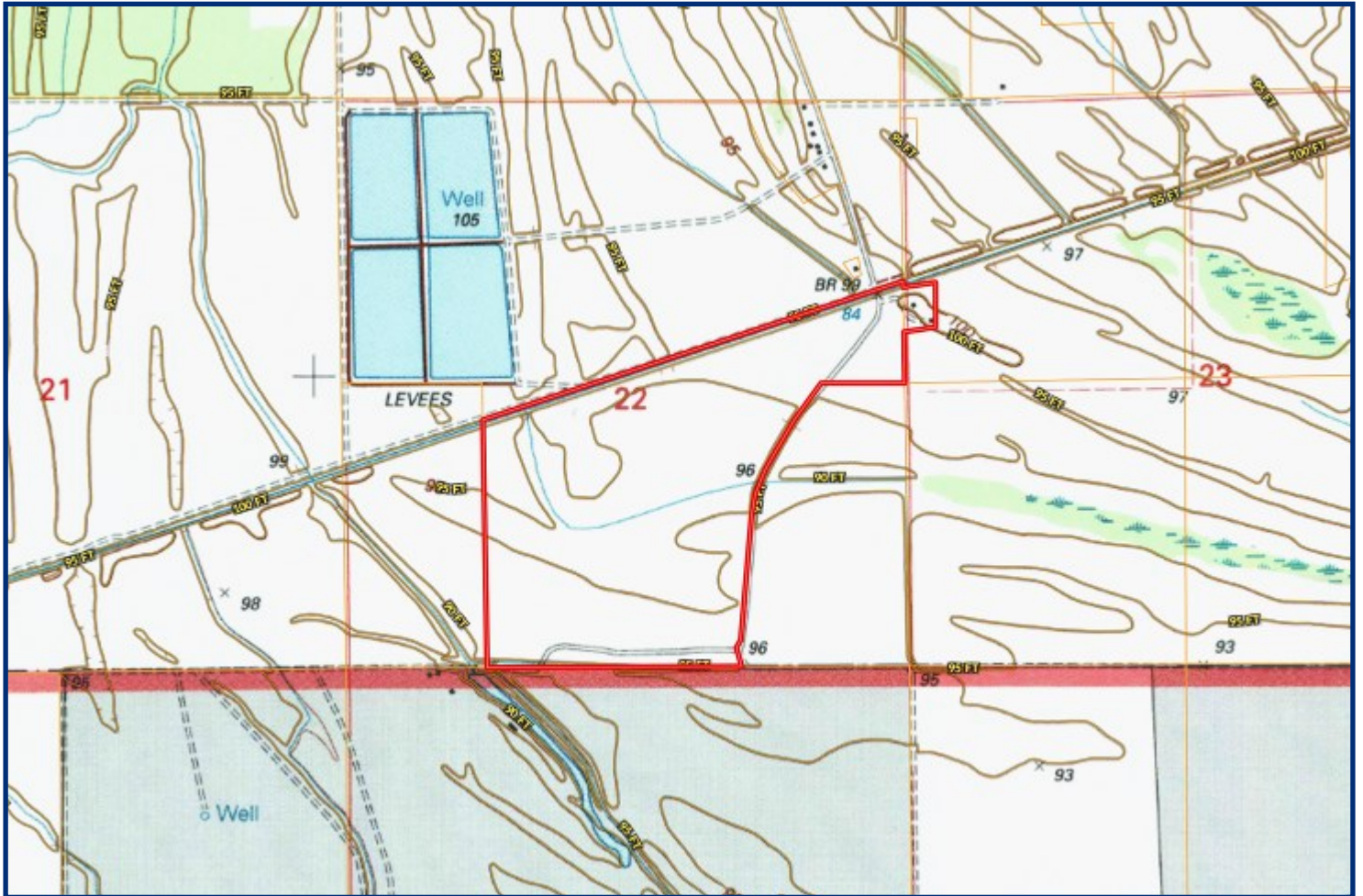
TOM SMITH, ALC®, BROKER
Tom@TomSmithLand.com
601.898.2772 **office** | 601.454.9397 **cell**



TomSmithLandandHomes.com

Information is believed to be accurate but not guaranteed.

TOPO MAP



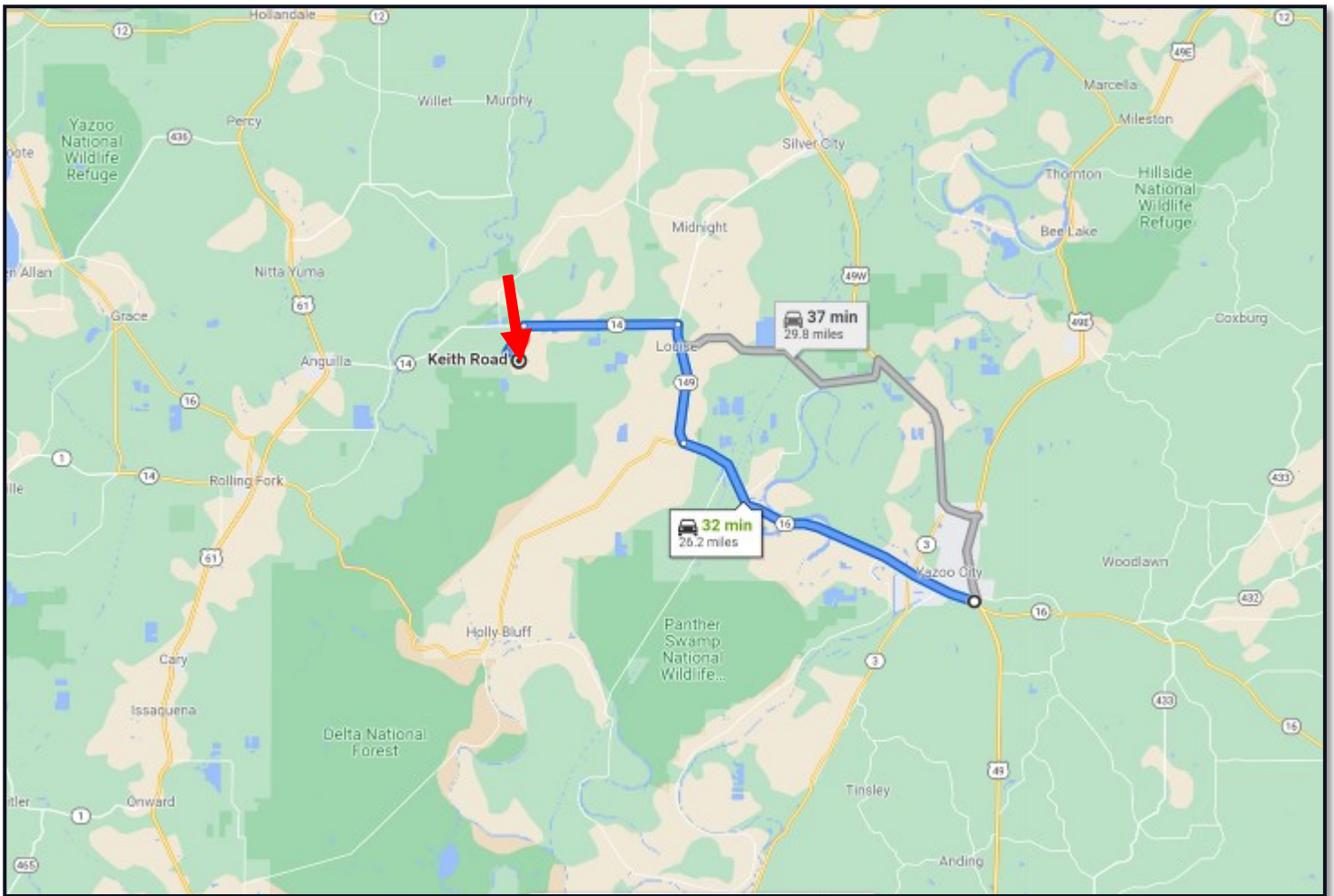
TOM SMITH, ALC®, BROKER
Tom@TomSmithLand.com
601.898.2772 office | 601.454.9397 cell



TomSmithLandandHomes.com

Information is believed to be accurate but not guaranteed.

DIRECTIONAL MAP



DIRECTIONS FROM YAZOO CITY, MS: Travel Hwy 16/Hwy 149 for 26.2 miles. Turn left on to Hwy 14 and travel 6 miles. Turn left on to DT White Road and travel 1.2 miles. Turn left on to Keith Road, the property will be on both sides of the road.

[GOOGLE MAP LINK](#)



Call The Land Man Today!

TOM SMITH, ALC®, BROKER
Tom@TomSmithLand.com
601.898.2772 **office** | 601.454.9397 **cell**

112 Village Blvd, Madison, MS 39110



Expect More. Get More.

TomSmithLandandHomes.com

Information is believed to be accurate but not guaranteed.