

HUNTING PARADISE

183± Acres in Sharkey County, MS



This 183± acre property in Sharkey County is the perfect tract for you and your family. This property consists of 100± acres of hardwood CRP and is manicured for your hunting pleasure. There are five established food plots with shooting houses and an excellent road system, including bridges and culverts, to provide easy passage and access throughout the property. The hardwoods are all producing food for the deer, and there are absolutely some trophies on this property! The current owner is strictly a whitetail trophy hunter and does not prepare the property for ducks. Still, there is a complete levee and riser system that encompasses approximately 20± acres that will make some of the best waterfowl habitats there is. The previous owner was an avid duck hunter and enjoyed years of successfully harvesting ducks on this property! This is a property for the avid outdoorsman! Call Tom Smith today to schedule your private showing!

Call the land man today!



TOM SMITH, ALC®, BROKER
Tom@TomSmithLand.com
601.898.2772 **office** | 601.454.9397 **cell**

TomSmithLandandHomes.com

Information is believed to be accurate but not guaranteed.



Call the land man today!



TOM SMITH, ALC®, BROKER
Tom@TomSmithLand.com
601.898.2772 **office** | 601.454.9397 **cell**



Expect More. Get More.

TomSmithLandandHomes.com

Information is believed to be accurate but not guaranteed.



Call the land man today!



TOM SMITH, ALC®, BROKER
Tom@TomSmithLand.com
601.898.2772 office | 601.454.9397 cell



Expect More. Get More.

TomSmithLandandHomes.com

Information is believed to be accurate but not guaranteed.



Call the land man today!



TOM SMITH, ALC®, BROKER
Tom@TomSmithLand.com
601.898.2772 **office** | 601.454.9397 **cell**

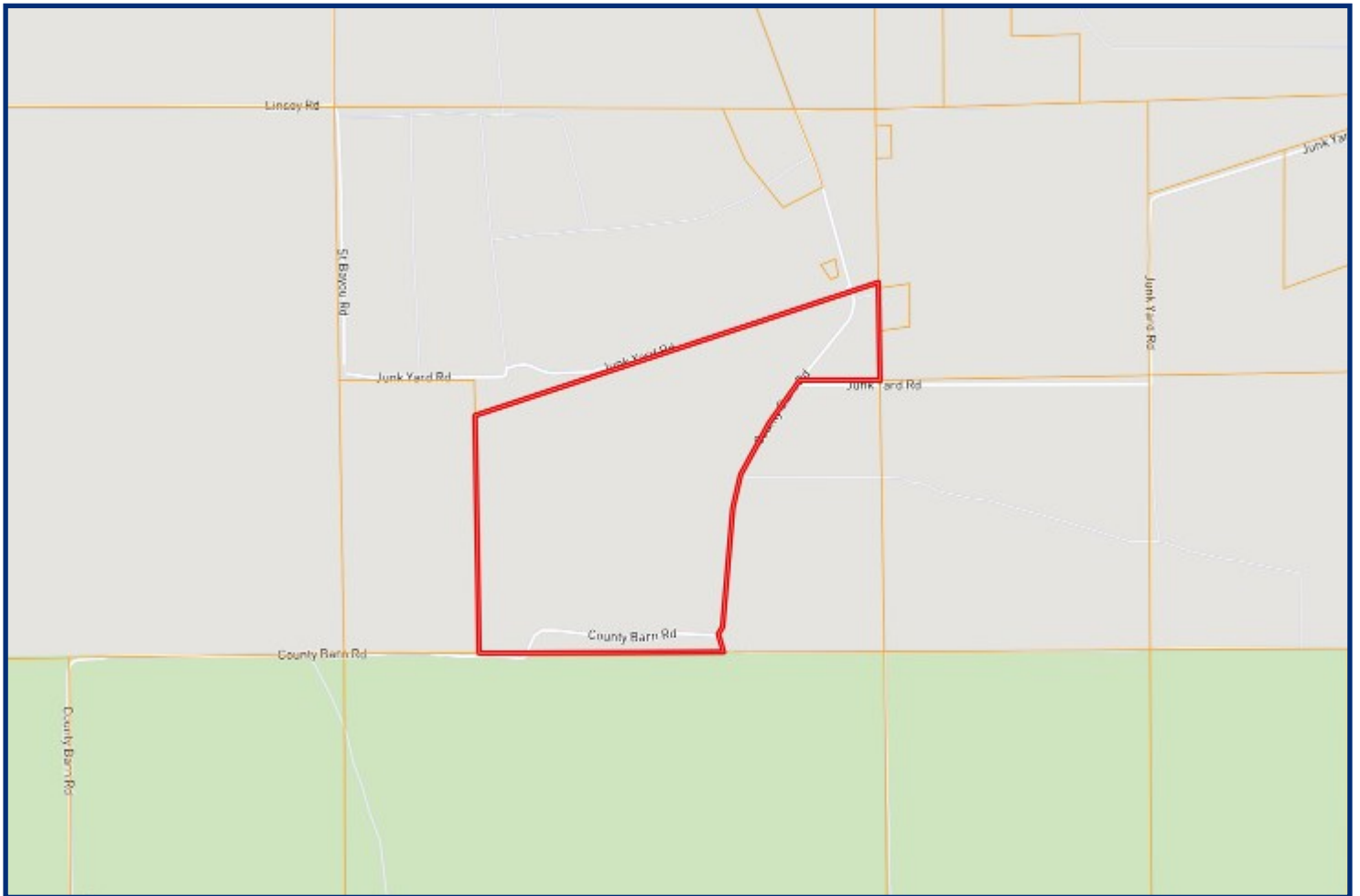


Expect More. Get More.

TomSmithLandandHomes.com

Information is believed to be accurate but not guaranteed.

OWNERSHIP MAP



Call the land man today!

TOM SMITH, ALC®, BROKER

Tom@TomSmithLand.com

601.898.2772 office | 601.454.9397 cell



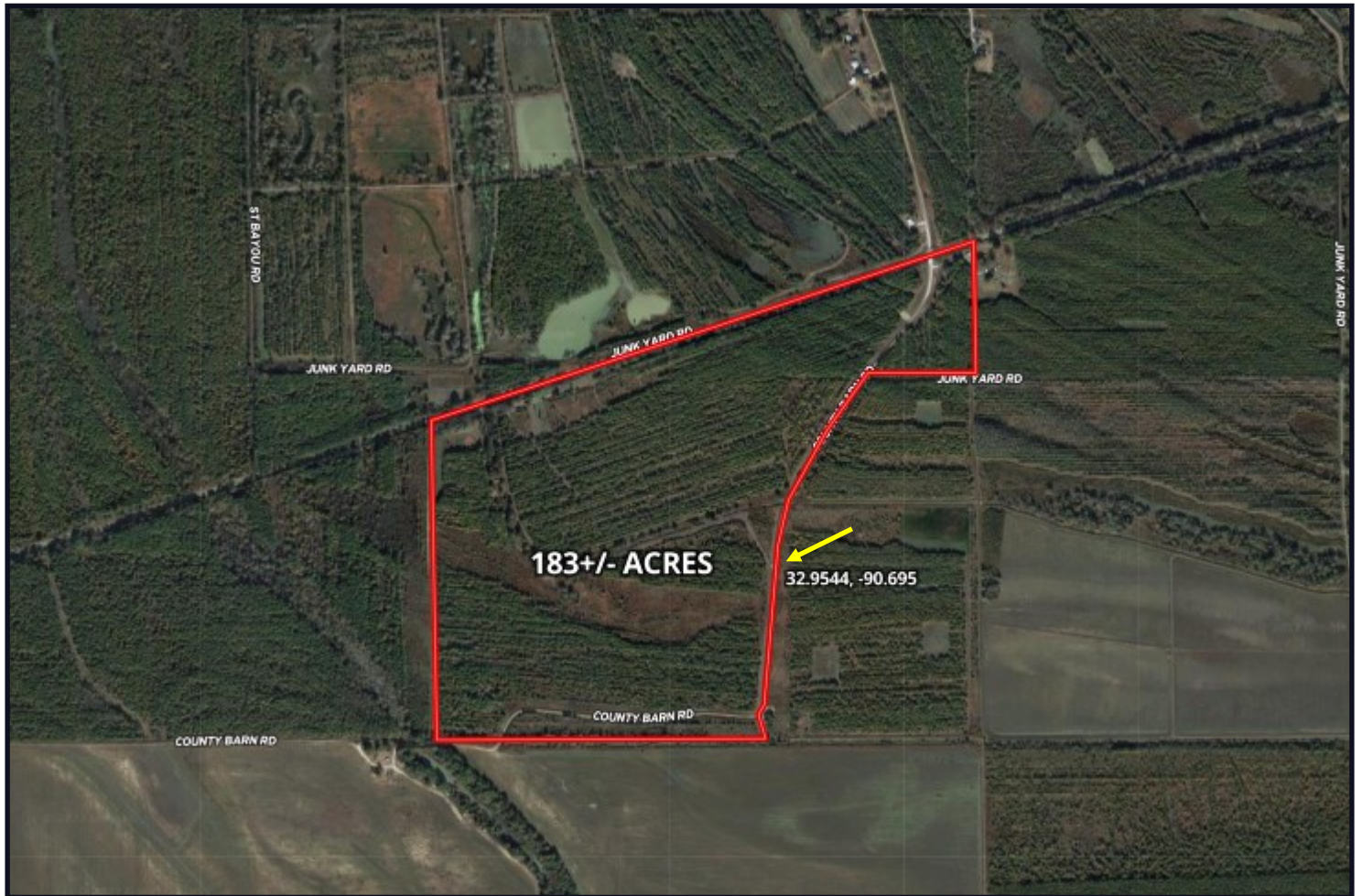
Expect More. Get More.



TomSmithLandandHomes.com

Information is believed to be accurate but not guaranteed.

AERIAL MAP



CLICK [HERE](#) FOR AN INTERACTIVE MAP

Call the land man today!

TOM SMITH, ALC[®], BROKER

Tom@TomSmithLand.com

601.898.2772 **office** | 601.454.9397 **cell**



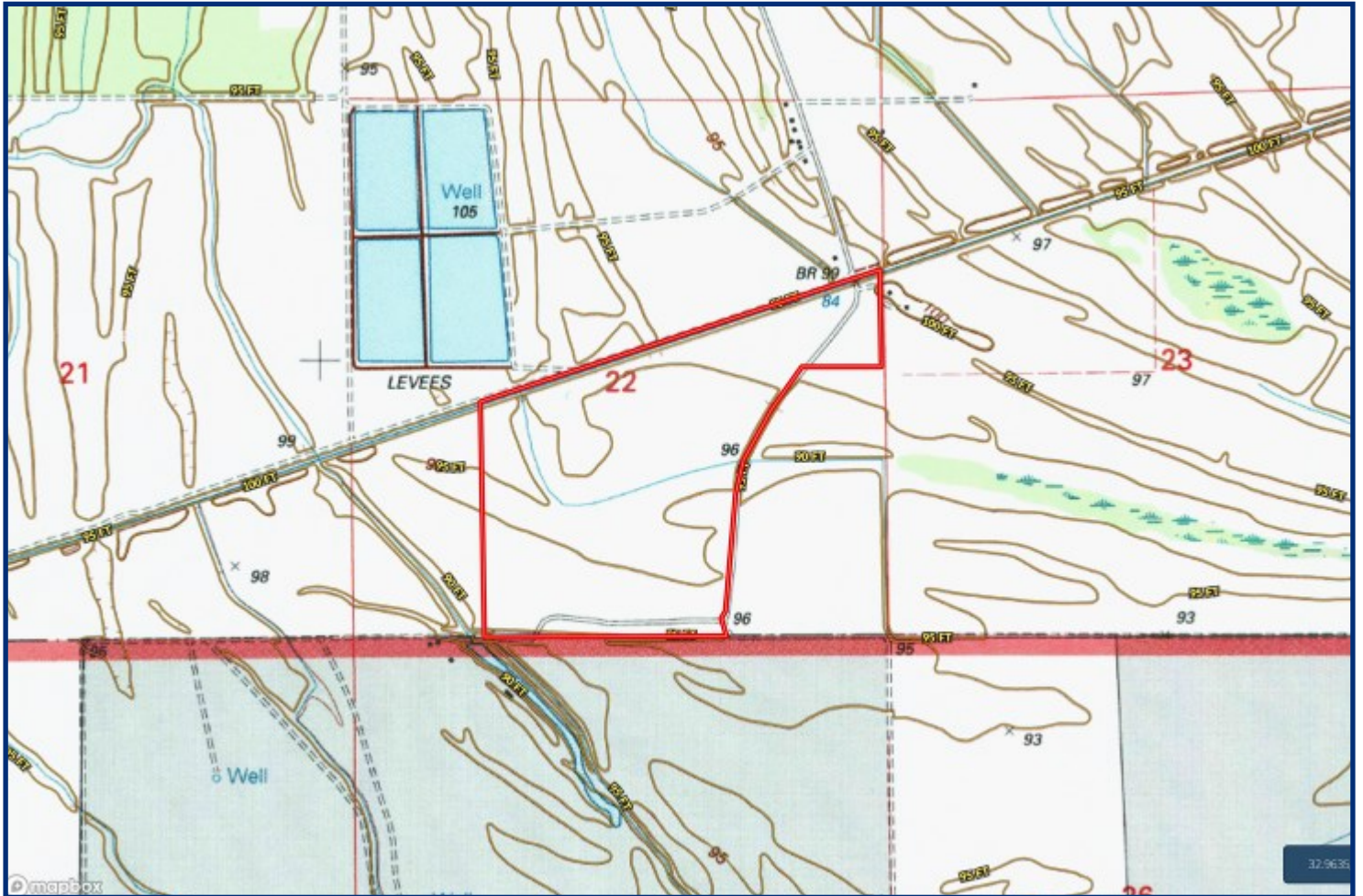
Expect More. Get More.



TomSmithLandandHomes.com

Information is believed to be accurate but not guaranteed.

TOPO MAP



Call the land man today!

TOM SMITH, ALC®, BROKER
Tom@TomSmithLand.com

601.898.2772 office | 601.454.9397 cell



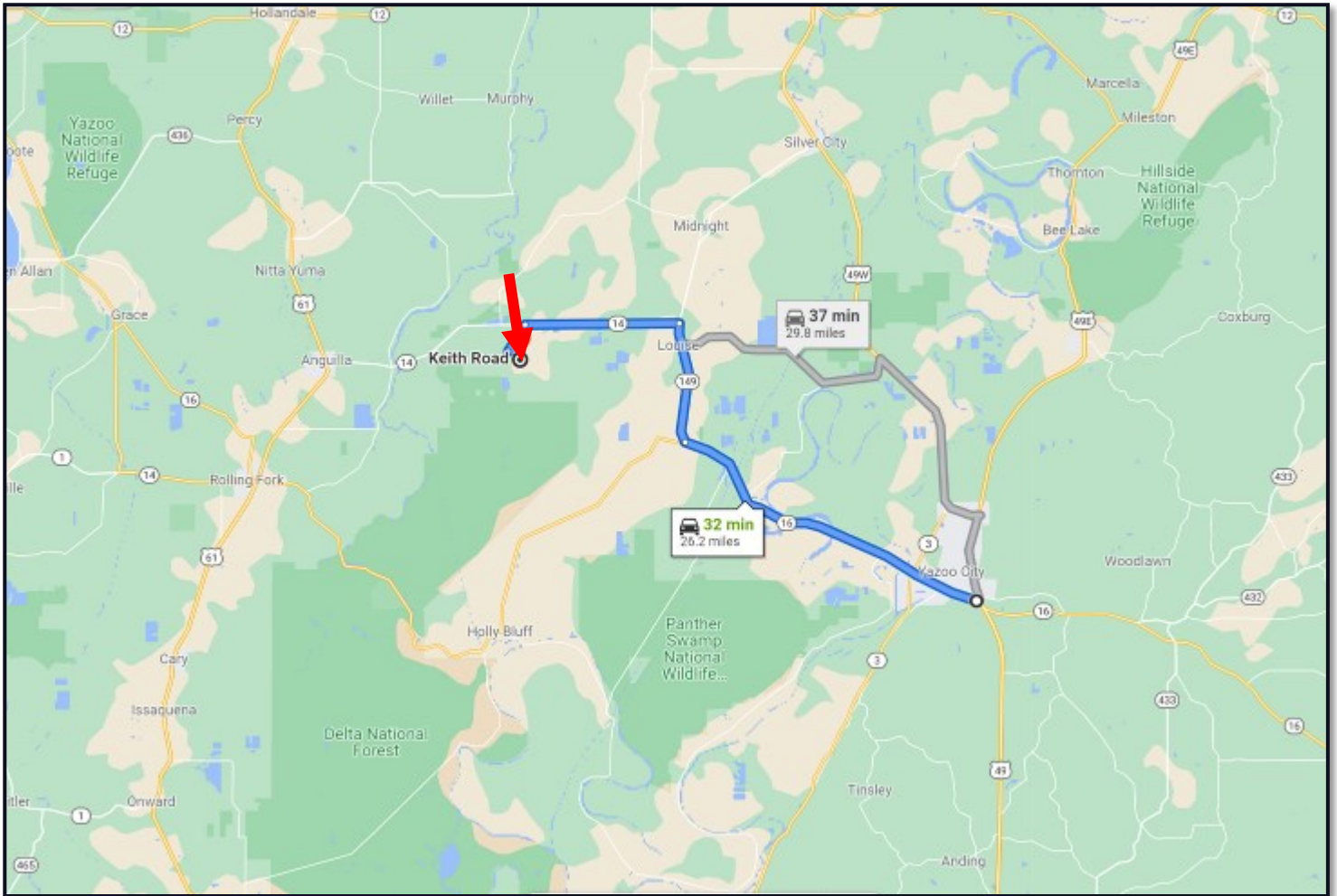
Expect More. Get More.



TomSmithLandandHomes.com

Information is believed to be accurate but not guaranteed.

DIRECTIONAL MAP



DIRECTIONS FROM YAZOO CITY, MS: Travel Hwy 16/Hwy 149 for 26.2 miles. Turn left on to Hwy 14 and travel 6 miles. Turn left on to DT White Road and travel 1.2 miles. Turn left on to Keith Road, the property will be on both sides of the road.

[GOOGLE MAP LINK](#)

Call the land man today!



TOM SMITH, ALC[®], BROKER
Tom@TomSmithLand.com
601.898.2772 **office** | 601.454.9397 **cell**



TomSmithLandandHomes.com

Information is believed to be accurate but not guaranteed.