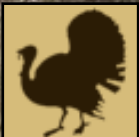


# 22± Acres of Excellent Hunting in Pike County, MS

**\$112,000**



22± Acres in Pike County, MS! This property has plenty of deer and turkey hunting from the established food plot areas in addition the property features a small pond and creek, providing a plentiful water source for local wildlife. The property is split nearly 50/50 between pasture ground and wooded areas, with mixed pine and hardwood timber. With plenty of road frontage on Causey Rd, a gated entrance, and a good internal road system, this property is easily accessed and traversed. The property also features two portable building camps, one 12x18 and another 10x16, with an established home/campsite with power and water already in place. The property is conveniently located just minutes from McComb, MS, and has quick access to I-55, putting the property an hour and a half from Baton Rouge, LA, and an hour and forty-five minutes from New Orleans, LA.

Directions from the Intersection of US-98E and I-55 in McComb, MS: Travel west on US-98E/MS-24W for 1.6 miles, turn left onto MS-48E, in 2.2 miles take a slight left onto Causey Rd, in .6 miles take a slight left, the property will be on the right.



*call me today!*

**PRESTON SMITH**, MANAGING BROKER

Preston@TomSmithLand.com

601.990.5070 office | 601.209.7150 cell



Expect More. Get More.

**TomSmithLandandHomes.com**

Information is believed to be accurate but not guaranteed.





*call me today!*

**PRESTON SMITH**, MANAGING BROKER  
 Preston@TomSmithLand.com  
 601.990.5070 office | 601.209.7150 cell



**TomSmithLandandHomes.com**

Information is believed to be accurate but not guaranteed.





*call me today!*

**PRESTON SMITH**, MANAGING BROKER  
Preston@TomSmithLand.com  
601.990.5070 office | 601.209.7150 cell



Expect More. Get More.

**TomSmithLandandHomes.com**

Information is believed to be accurate but not guaranteed.





*call me today!*

**PRESTON SMITH**, MANAGING BROKER  
Preston@TomSmithLand.com  
601.990.5070 office | 601.209.7150 cell



**TomSmithLandandHomes.com**

Information is believed to be accurate but not guaranteed.



# Aerial Map



*call me today!*

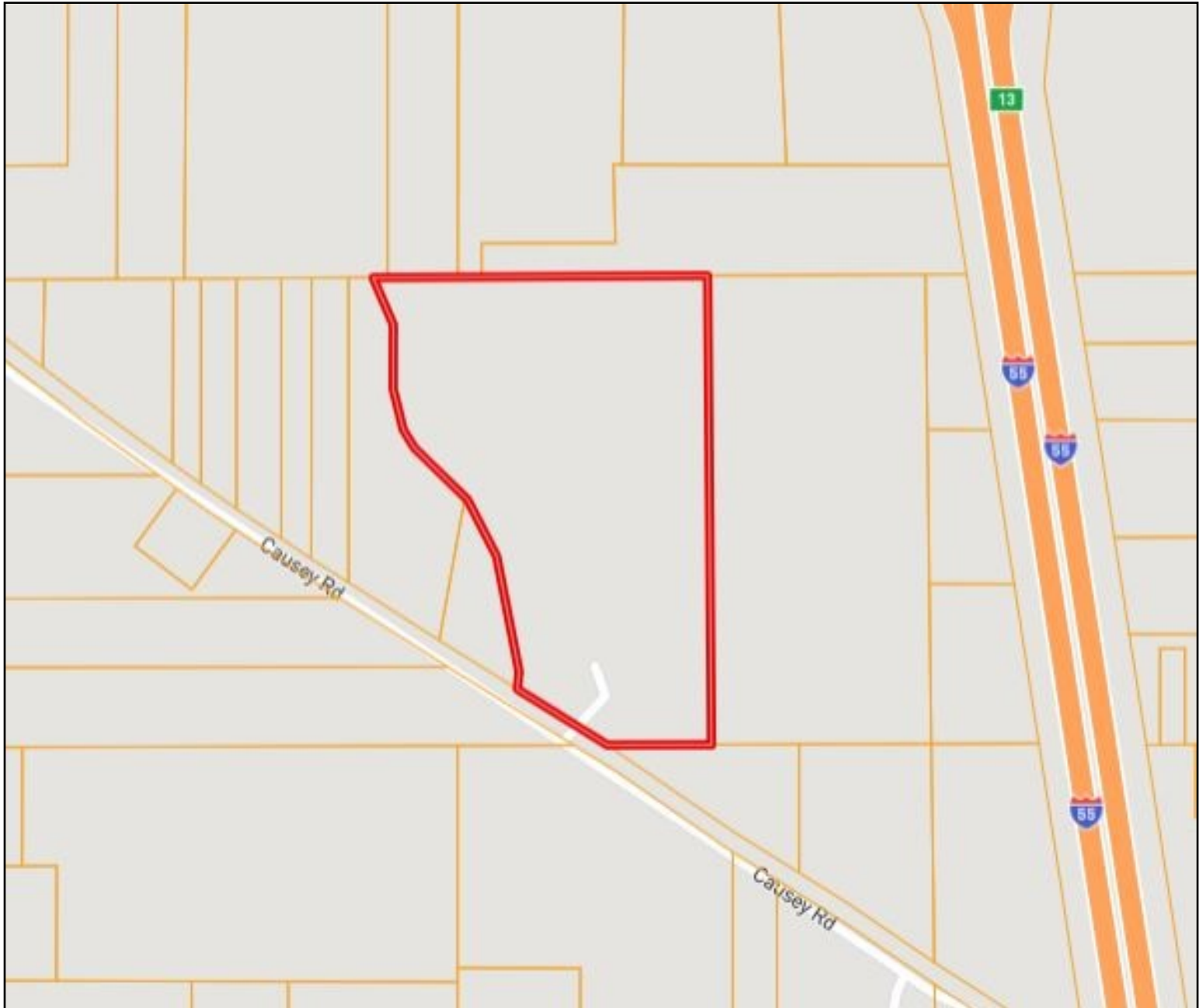
**PRESTON SMITH**, MANAGING BROKER  
Preston@TomSmithLand.com  
601.990.5070 office | 601.209.7150 cell



**TomSmithLandandHomes.com**

Information is believed to be accurate but not guaranteed.

# Ownership Map



*call me today!*

**PRESTON SMITH**, MANAGING BROKER  
Preston@TomSmithLand.com  
601.990.5070 office | 601.209.7150 cell

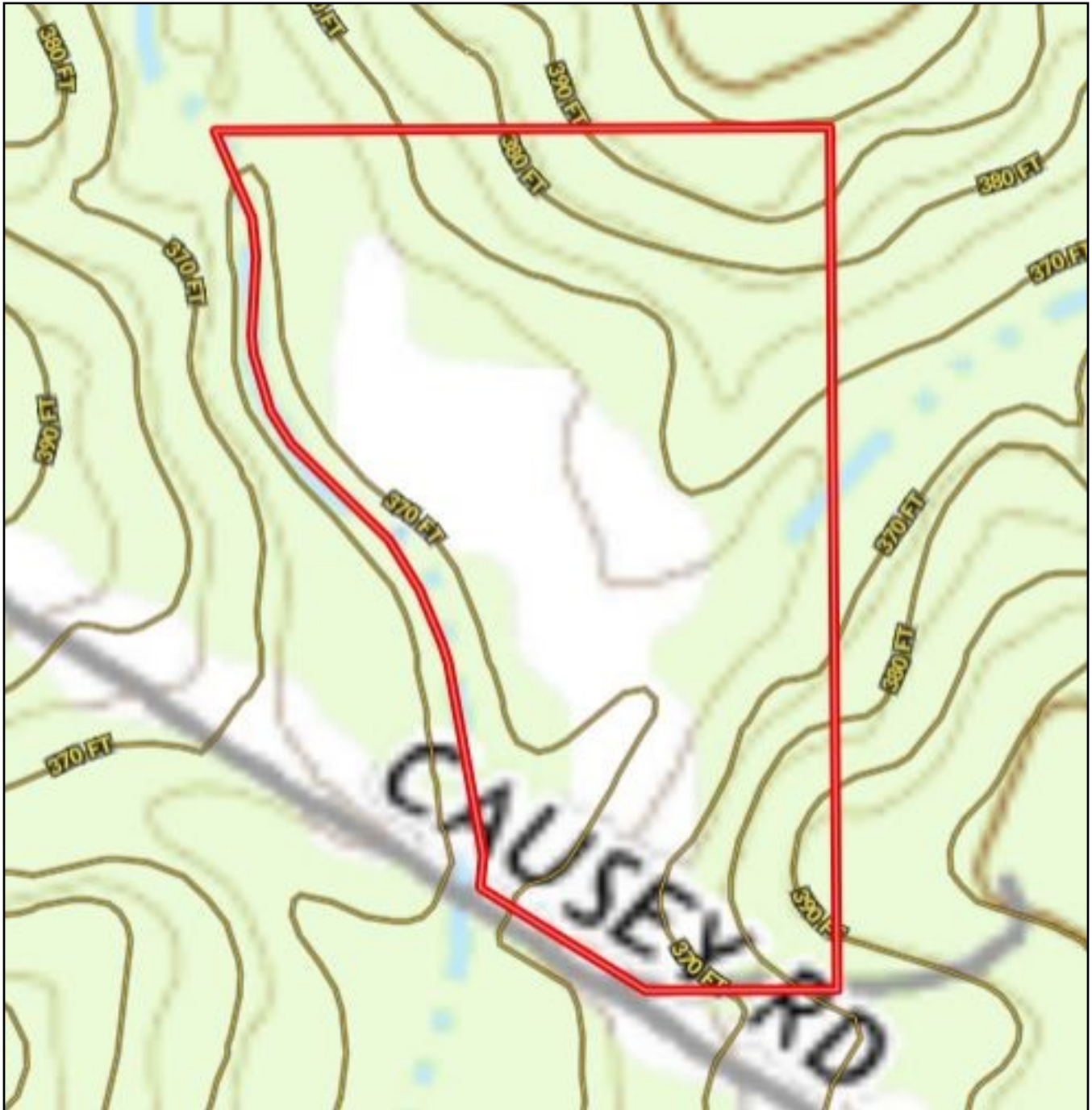


**TomSmithLandandHomes.com**

Information is believed to be accurate but not guaranteed.



# Topography Map



*call me today!*

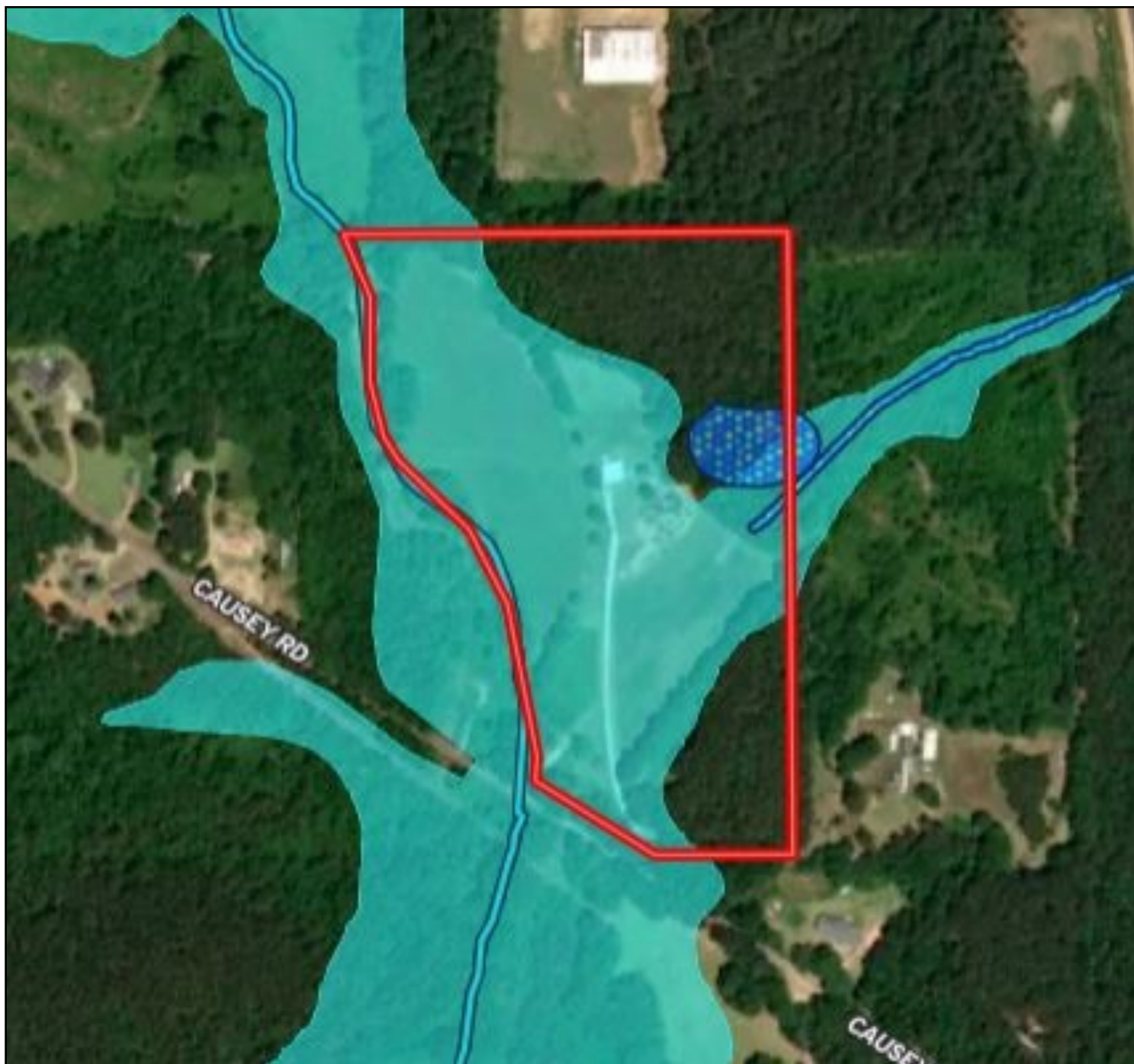
**PRESTON SMITH**, MANAGING BROKER  
Preston@TomSmithLand.com  
601.990.5070 office | 601.209.7150 cell



**TomSmithLandandHomes.com**

Information is believed to be accurate but not guaranteed.

# Flood Map



*call me today!*

**PRESTON SMITH**, MANAGING BROKER  
Preston@TomSmithLand.com  
601.990.5070 office | 601.209.7150 cell



**TomSmithLandandHomes.com**

Information is believed to be accurate but not guaranteed.



# Soil Map



*call me today!*

**PRESTON SMITH**, MANAGING BROKER  
 Preston@TomSmithLand.com  
 601.990.5070 office | 601.209.7150 cell

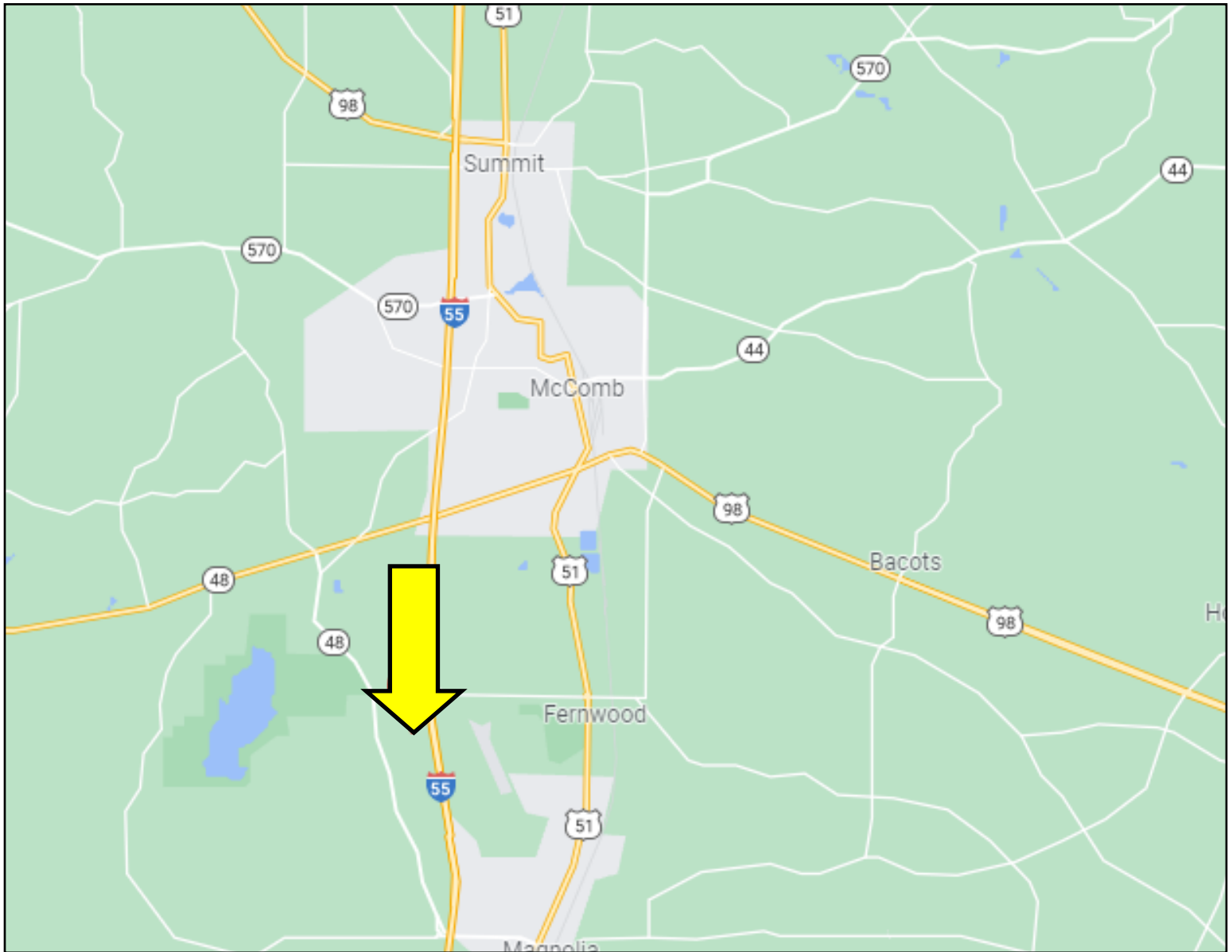


**TomSmithLandandHomes.com**

Information is believed to be accurate but not guaranteed.



# Directional Map



Directions from the Intersection of US-98E and I-55 in McComb, MS: Travel west on US-98E/MS-24W for 1.6 miles, turn left onto MS-48E, in 2.2 miles take a slight left onto Causey Rd, in .6 miles take a slight left, the property will be on the right.



*call me today!*

**PRESTON SMITH**, MANAGING BROKER  
Preston@TomSmithLand.com  
601.990.5070 office | 601.209.7150 cell



**TomSmithLandandHomes.com**

Information is believed to be accurate but not guaranteed.