

50+/- Acre Home or Recreational Tract Lincoln County, MS



2617 East Lincoln Road Brookhaven, MS 39601

Come and take a look at this 50+/- acre tract in Lincoln County, MS, situated in Brookhaven School District with TONS of possibilities! A well-kept, private drive will lead you right into your very own secluded recreational tract or homesite. You will find a home or camp site with power, water, and septic that would be perfect for a camper, mother-in-law suite, shop, or mobile home. There is a privacy barrier between it and the 40X0 enclosed shop that has been outfitted to be a home. This one could be a real treat with 2,400+/- square feet, studded and even dry walled in some areas. About 30+/- acres are 15-20 year old planted pines. The terrain is a great mix, with some level areas perfect for homesites and some rigid areas perfect for a great ATV ride. The property lines are fenced, and there is plenty of room for an ATV to be driven all the way around the perimeter. There are ponds located on the property, one currently holding water, and the second has not been filled yet. The property has road frontage on East Lincoln Road, and is less than 10 miles from US-84, and less than 20 miles from all the amenities of Brookhaven. Call Sabrina to schedule your private viewing today. Please do not approach the property without contacting the listing agent.

Directions from the intersection of Hwy 84 East and US-51 in Brookhaven, MS: Travel on Hwy 84 East for 4.4 miles. Turn right onto East Lincoln Road. The property is on the left in 4.8 miles. DO NOT ENTER DRIVE WITHOUT CONTACTING THE LISTING AGENT. Address: 2617 East Lincoln Road Brookhaven, MS 39601



call me today!

SABRINA WOLFF, REALTOR®
Sabrina@TomSmithHomes.com
601.990.5070 office | 601.754.3763 cell



TomSmithLandandHomes.com

Information is believed to be accurate but not guaranteed.



Call me today!

SABRINA WOLFE, REALTOR®
Sabrina@TomSmithHomes.com
601.990.5070 office | 601.754.3763 cell



TomSmithLandandHomes.com

Information is believed to be accurate but not guaranteed.



LandRepeat
2010-2021
AMERICAN
BEST
BROKERAGES

Call me today!

SABRINA WOLFE, REALTOR®
Sabrina@TomSmithHomes.com
601.990.5070 office | 601.754.3763 cell



Expect More. Get More.

TomSmithLandandHomes.com

Information is believed to be accurate but not guaranteed.

Aerial Map



LandReport
2010-2021
AMERICA'S
BEST
BROKERAGES

call me today!

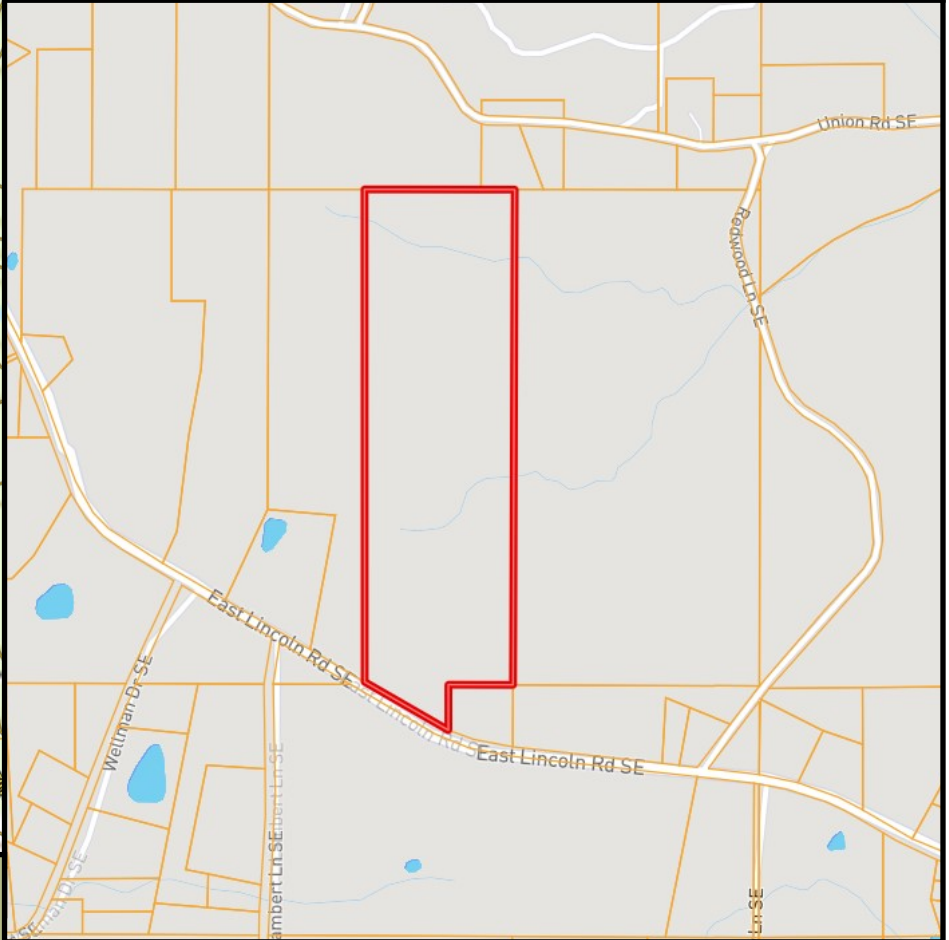
SABRINA WOLFF, REALTOR®
Sabrina@TomSmithHomes.com
601.990.5070 office | 601.754.3763 cell



TomSmithLandandHomes.com

Information is believed to be accurate but not guaranteed.

Ownership Map



Topo Map



LandReport
2010-2021
AMERICAN
BEST
BROKERAGES

Call me today!

SABRINA WOLFF, REALTOR®
Sabrina@TomSmithHomes.com
601.990.5070 office | 601.754.3763 cell

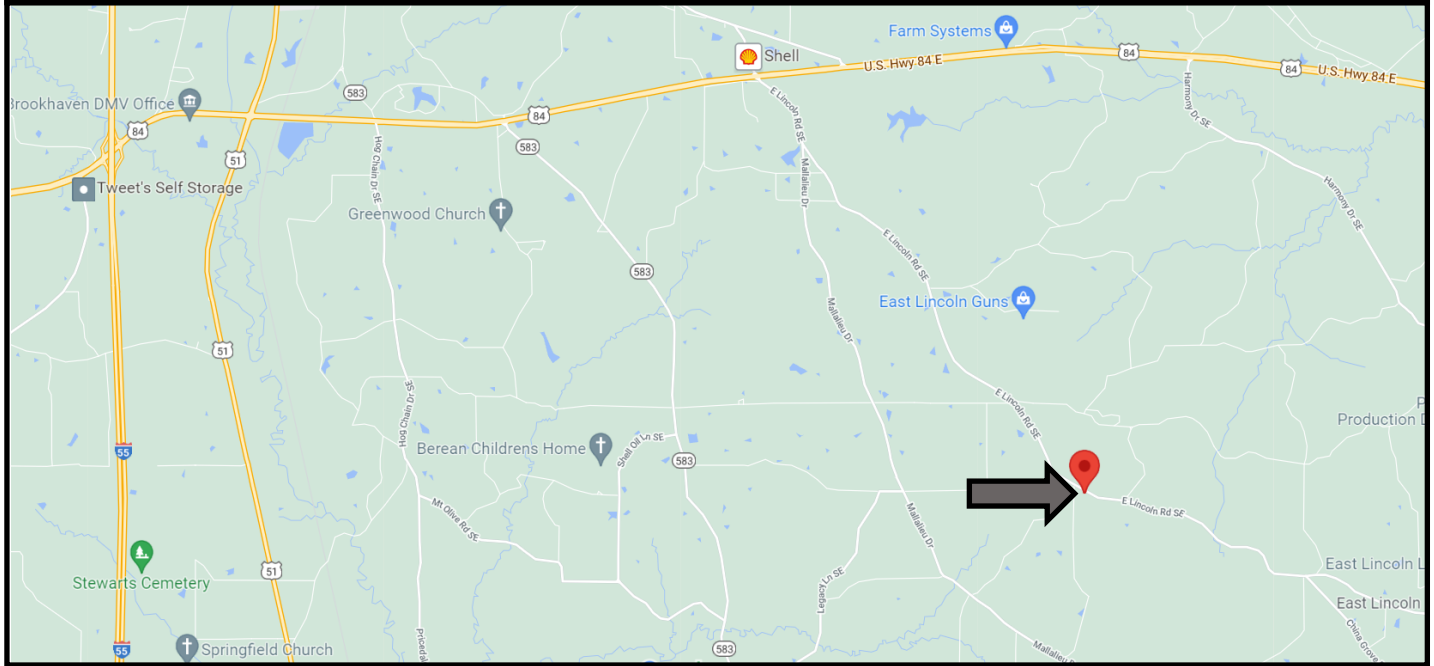


Expect More. Get More.

TomSmithLandandHomes.com

Information is believed to be accurate but not guaranteed.

Directional Map



Directions from the intersection of Hwy 84 East and US-51 in Brookhaven, MS: Travel on Hwy 84 East for 4.4 miles. Turn right onto East Lincoln Road. The property is on the left in 4.8 miles. **DO NOT ENTER DRIVE WITHOUT CONTACTING THE LISTING AGENT.**
Address: 2617 East Lincoln Road Brookhaven, MS 39601



call me today!

SABRINA WOLFF, REALTOR®
Sabrina@TomSmithHomes.com
601.990.5070 office | 601.754.3763 cell



TomSmithLandandHomes.com

Information is believed to be accurate but not guaranteed.