

Lot #1 2.8+/- Acres in Pike County, MS



\$42,000

If you are looking for a perfect lot to build your forever home in Pike County, MS, then this is it. This 2.8+/- acre corner lot on Ava Lane in Summit, MS is a perfect location. Located just minutes from Interstate 55 and located in the North Pike School District you cannot ask for a better location. Power and water are available on site. All that is left is for you to build the home of your dreams. Covenants apply, Call Clif Cannon for information and to schedule a viewing today!

Directions from the intersection of Interstate 55 and US-98 in Summit, MS: Travel west on US-98 for 4.1 miles. Turn right onto Ava Lane. The property will be on the left.



call me today!

CLIF CANNON, REALTOR®
Clif@TomSmithLand.com
601.990.5070 office | 601.565.1070 cell



TomSmithLandandHomes.com

Information is believed to be accurate but not guaranteed.

Aerial Map

2.8+/-Acres

31.3209, -90.5372



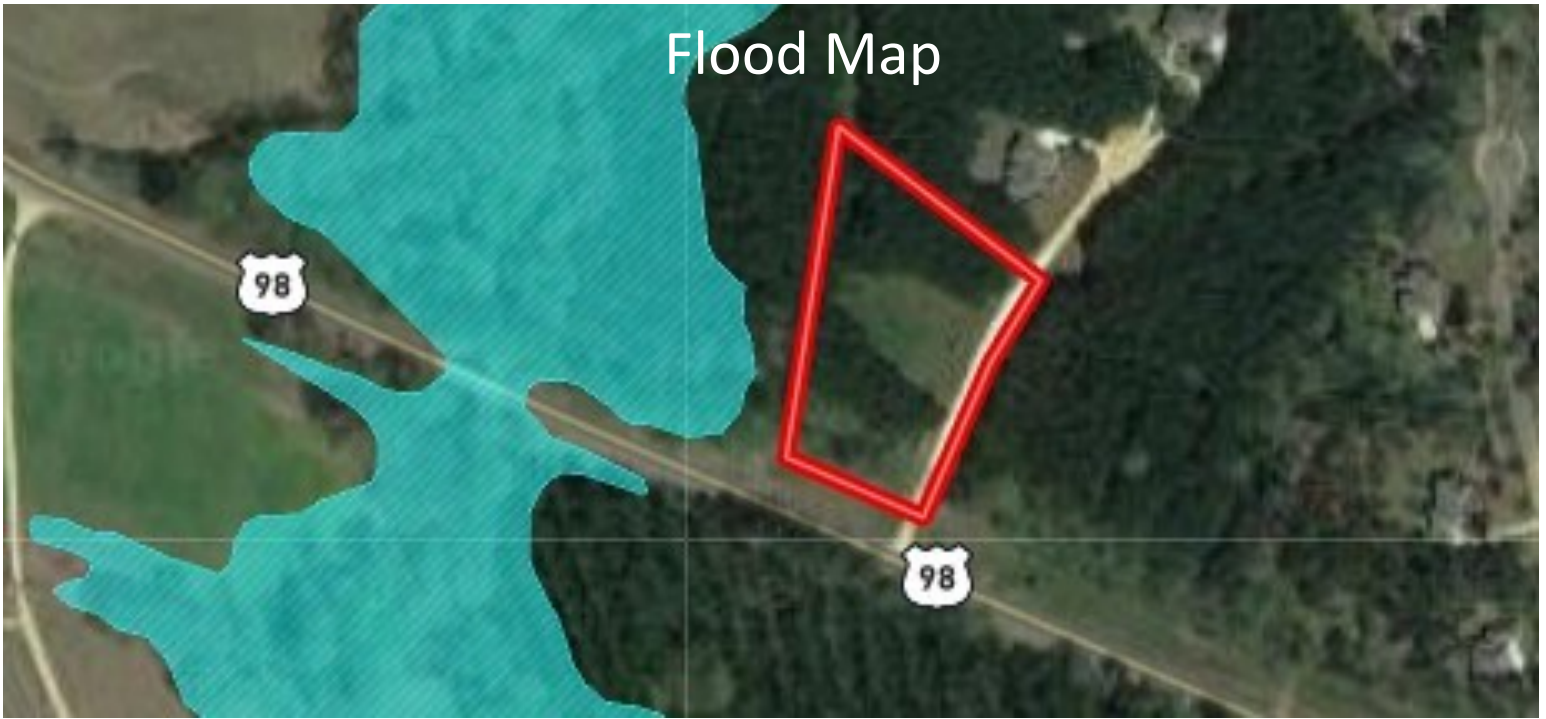
CLIF CANNON, REALTOR®
Clif@TomSmithLand.com
601.990.5070 office | 601.565.1070 cell

Expect More. Get More.

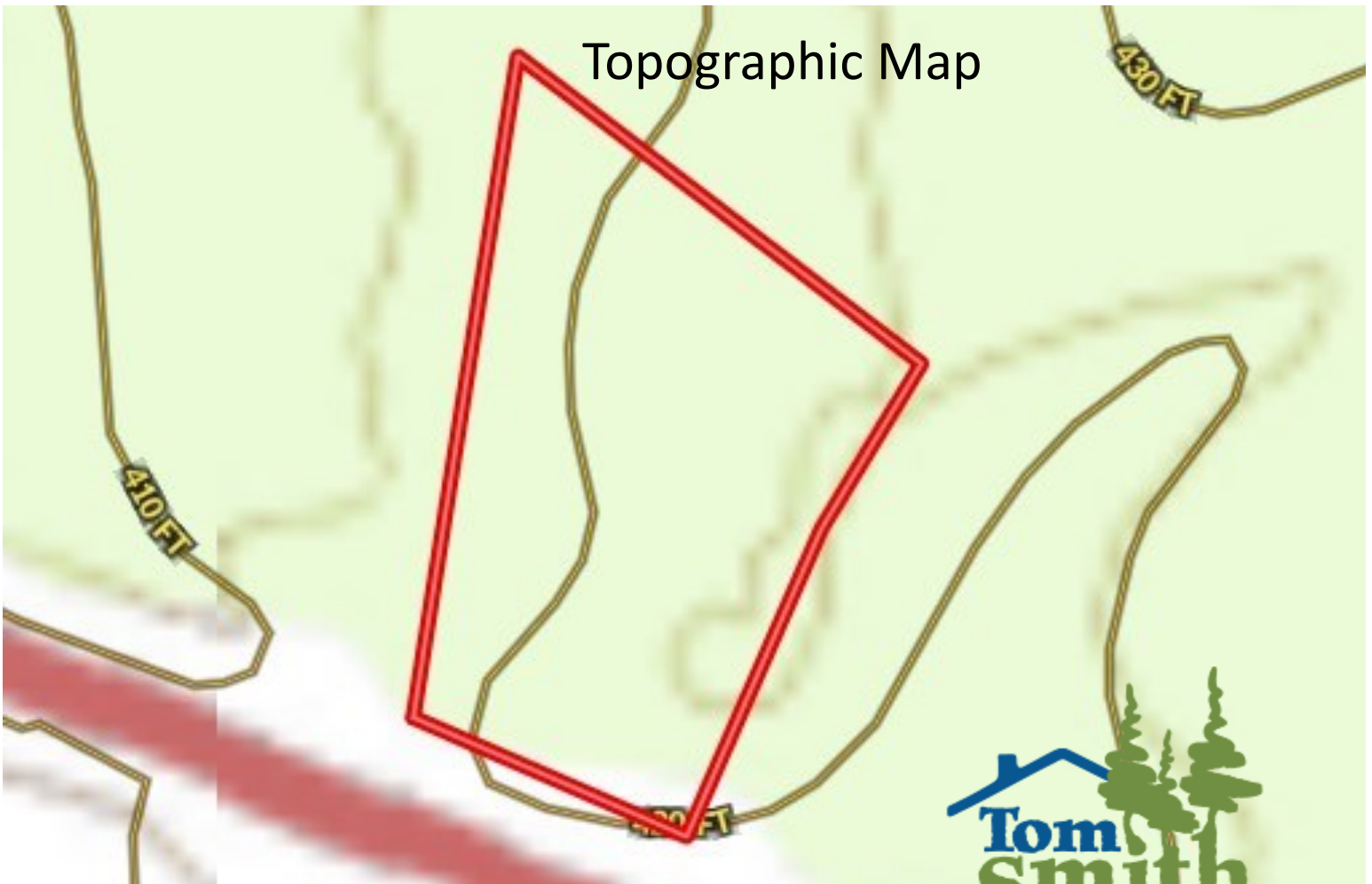
TomSmithLandandHomes.com

Information is believed to be accurate but not guaranteed.

Flood Map



Topographic Map



CLIF CANNON, REALTOR®

Clif@TomSmithLand.com

601.990.5070 office | 601.565.1070 cell



Expect More. Get More.



TomSmithLandandHomes.com

Information is believed to be accurate but not guaranteed.



Ownership Map

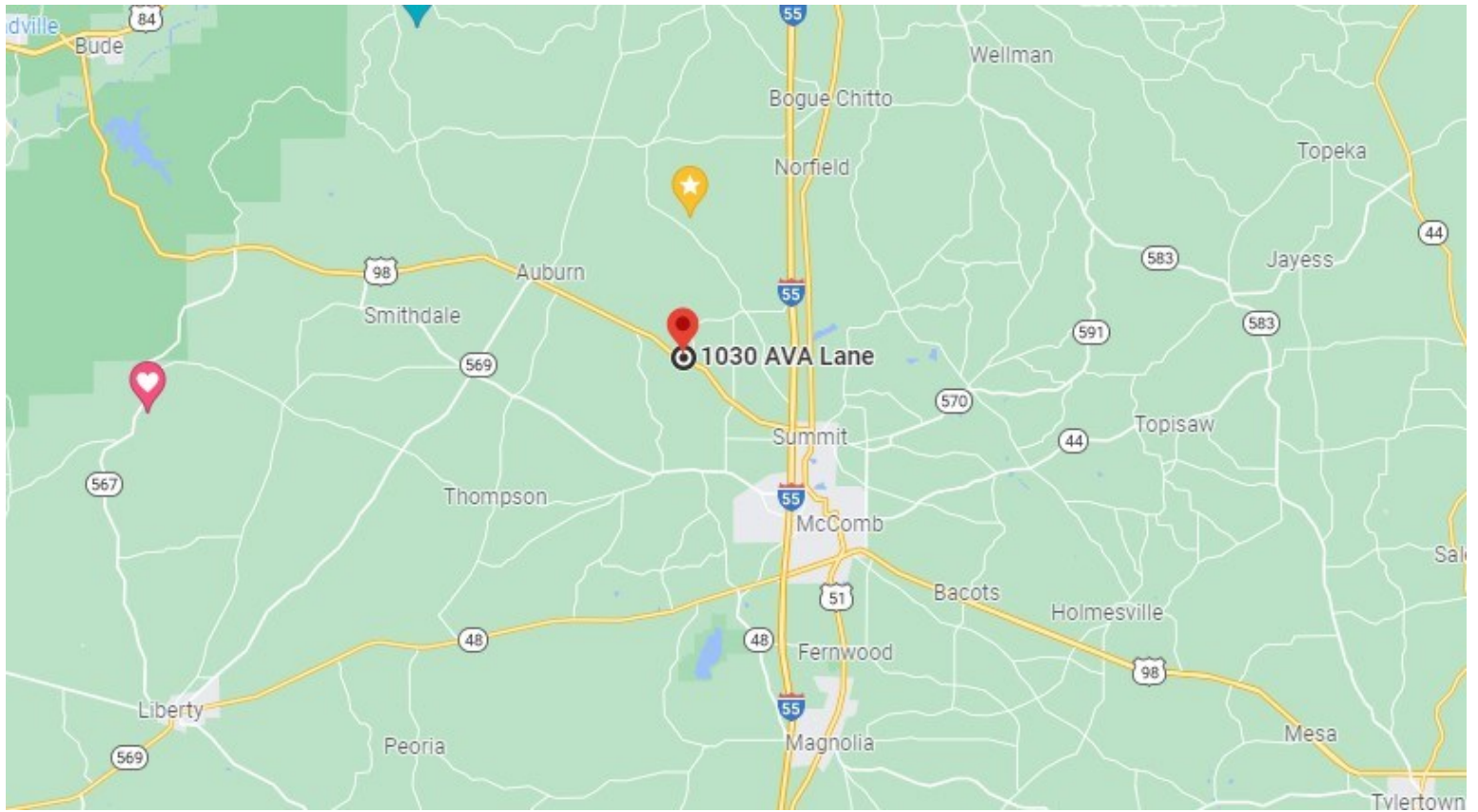


CLIF CANNON, REALTOR®
Clif@TomSmithLand.com
601.990.5070 office | 601.565.1070 cell



TomSmithLandandHomes.com

Information is believed to be accurate but not guaranteed.



Directional Map

Directions from the intersection of Interstate 55 and US-98 in Summit, MS: Travel west on US-98 for 4.1 miles. Turn right onto Ava Lane. The property will be on the left.

Ava Lane

Summit, MS 39666



CLIF CANNON, REALTOR®
Clif@TomSmithLand.com
601.990.5070 office | 601.565.1070 cell



TomSmithLandandHomes.com

Information is believed to be accurate but not guaranteed.