

Lot #9 2.99+/- Acres in Pike County, MS



\$45,000

If you are looking for a perfect lot to build your forever home in Pike County, MS, then this is it. This 2.99+/- acre corner lot on Parker Drive in Summit, MS is a perfect location. Located just minutes from Interstate 55 and in the North Pike School District you cannot ask for a better location. Power and water are available on sight. All that is left is for you to build the home of your dreams. Covenants apply, Call Clif Cannon for information and to schedule a viewing today!

Directions from the intersection of Interstate 55 and US-98 in Summit, MS: Travel west on US-98 for 3.9 miles. Turn right onto Parker Drive. The property will be on the right.



call me today!

CLIF CANNON, REALTOR®
Clif@TomSmithLand.com
601.990.5070 office | 601.565.1070 cell

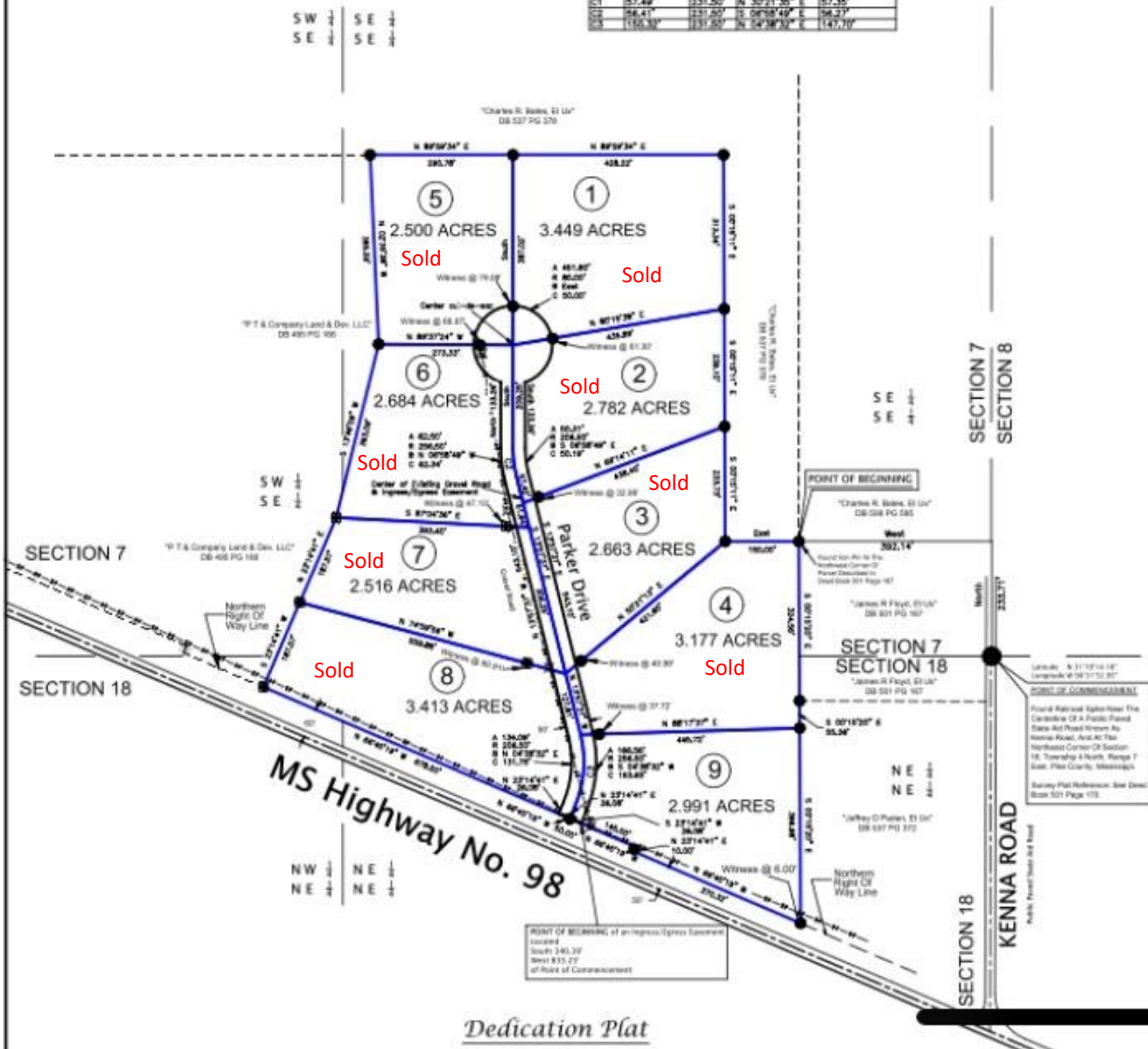


TomSmithLandandHomes.com

Information is believed to be accurate but not guaranteed.

Call Table for Curve Data

CHORD	ARC LENGTH	RADIUS	CHORD BEARING	CHORD LENGTH
107.42'	231.20'	N 30°21'20" E	107.30'	
146.41'	231.20'	S 06°58'49" E	146.27'	
119.33'	231.20'	N 24°38'30" E	1147.70'	



CLIF CANNON, REALTOR®
 Clif@TomSmithLand.com
 601.990.5070 office | 601.565.1070 cell



TomSmithLandandHomes.com

Information is believed to be accurate but not guaranteed.



Aerial Map



CLIF CANNON, REALTOR®
Clif@TomSmithLand.com
601.990.5070 office | 601.565.1070 cell

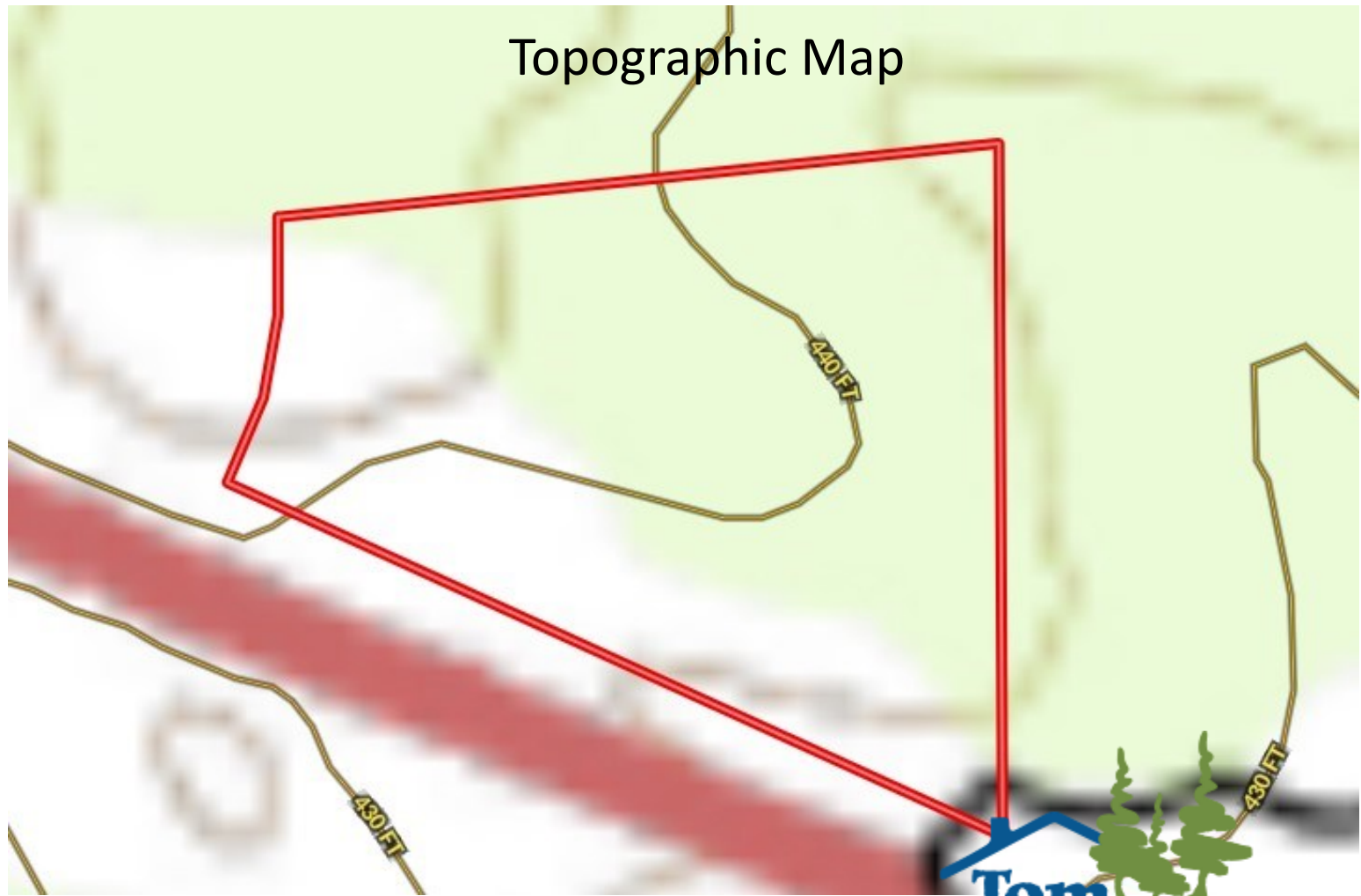


TomSmithLandandHomes.com

Information is believed to be accurate but not guaranteed.



Flood Map



Topographic Map

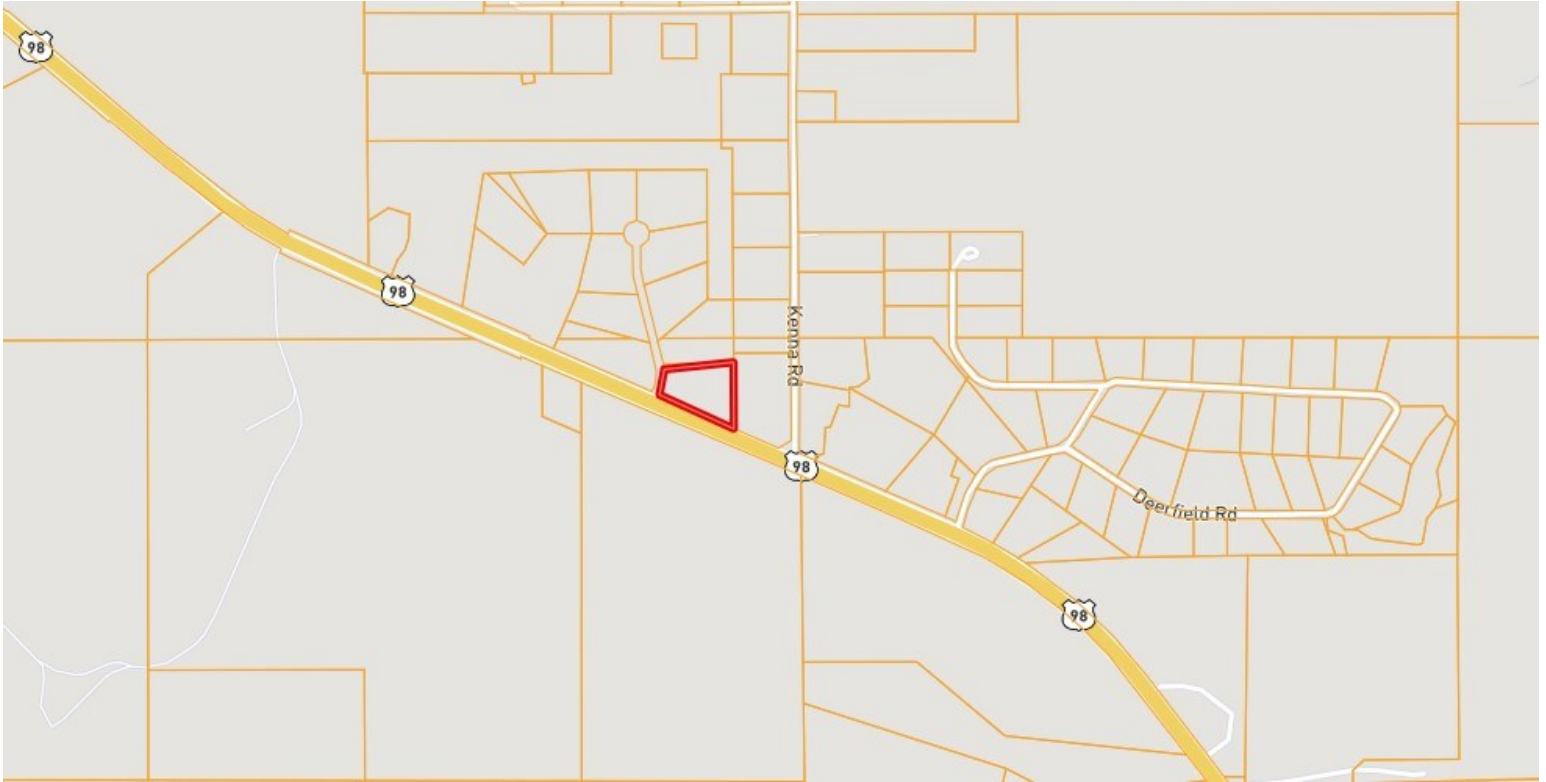


CLIF CANNON, REALTOR®
Clif@TomSmithLand.com
601.990.5070 office | 601.565.1070 cell



TomSmithLandandHomes.com

Information is believed to be accurate but not guaranteed.



Ownership Map

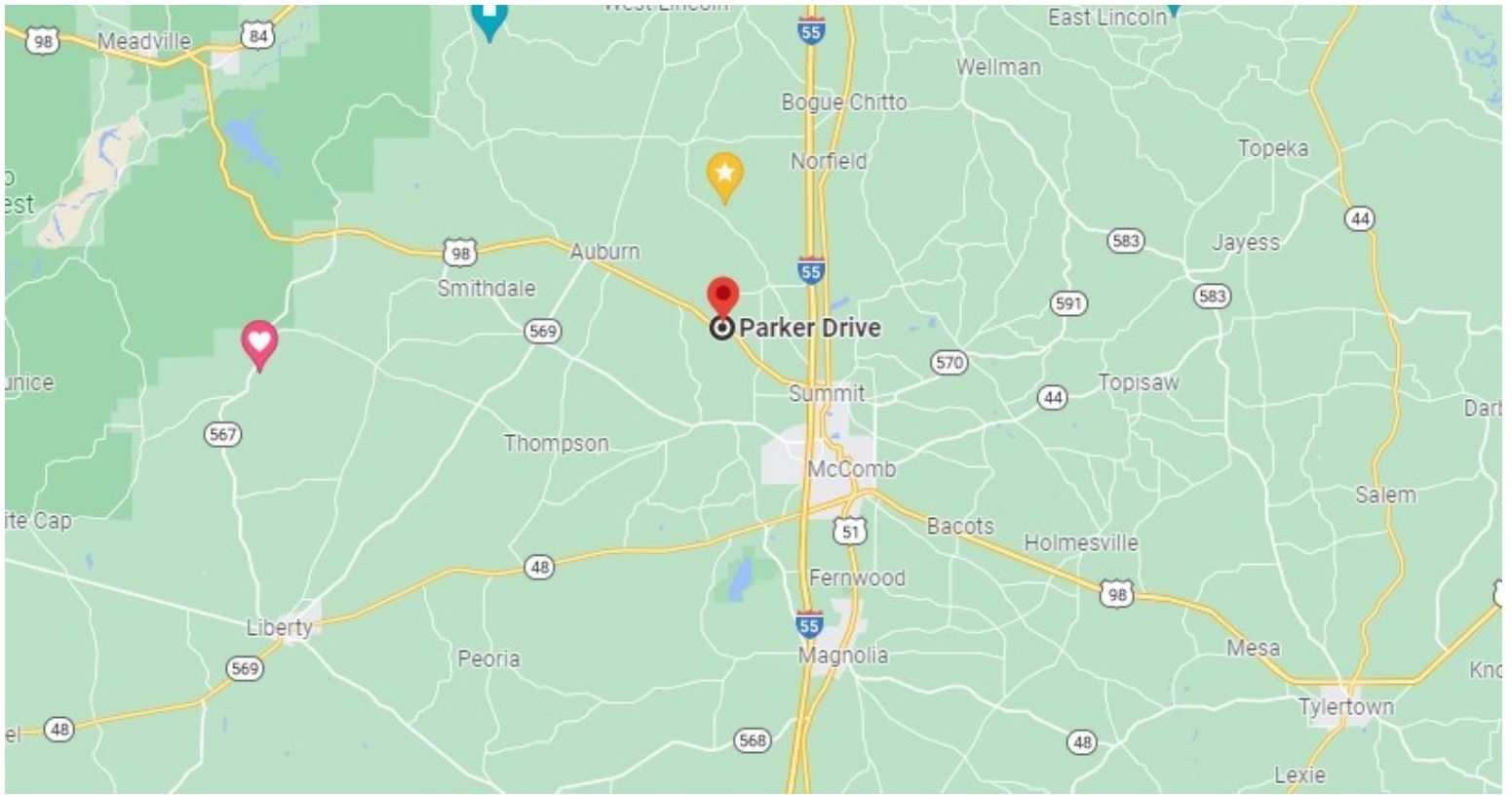


CLIF CANNON, REALTOR®
Clif@TomSmithLand.com
601.990.5070 office | 601.565.1070 cell



TomSmithLandandHomes.com

Information is believed to be accurate but not guaranteed.



Directional Map

Directions from the intersection of Interstate 55 and US-98 in Summit, MS: Travel west on US-98 for 3.9 miles. Turn right onto Parker Drive. The property will be on the right.

Parker Dr

Summit, MS 39666



CLIF CANNON, REALTOR®
Clif@TomSmithLand.com
601.990.5070 office | 601.565.1070 cell



TomSmithLandandHomes.com

Information is believed to be accurate but not guaranteed.