

10+/- Acres in Lawrence County, MS



\$40,000

If you are looking for an investment or commercial opportunity in Lawrence County, then look no further than this 10+/- acres at the corner of US-84 and US-184 in Monticello, MS. This perfectly located tract can be rezoned for your commercial enterprise. Located just minutes from downtown Monticello and only 20 minutes from Brookhaven, MS, this is an opportunity to invest in the future. Electrical power and water are available on US-184. Contact Clif Cannon to schedule a viewing today. .

Directions from the intersection of MS-27 and US-84 in Monticello, MS: Travel south on MS-27 for .5 miles. Turn right onto MS-184 W and travel for 1.6 miles. The property will be on the left.



call me today!

CLIF CANNON, REALTOR®
Clif@TomSmithLand.com
601.990.5070 office | 601.565.1070 cell



TomSmithLandandHomes.com

Information is believed to be accurate but not guaranteed.



CLIF CANNON, REALTOR®

Clif@TomSmithLand.com

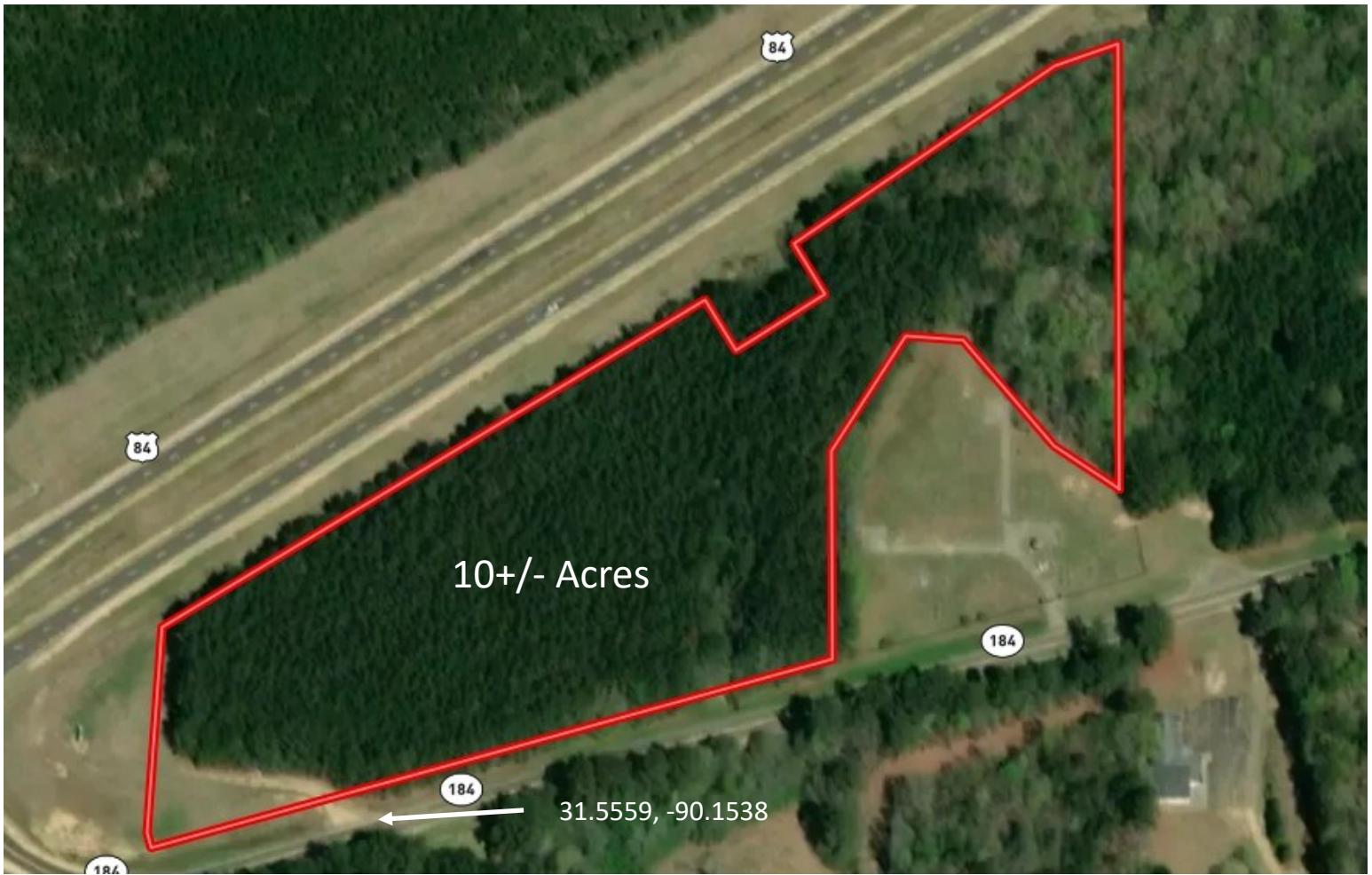
601.990.5070 office | 601.565.1070 cell



Expect More. Get More.

TomSmithLandandHomes.com

Information is believed to be accurate but not guaranteed.



Aerial Map

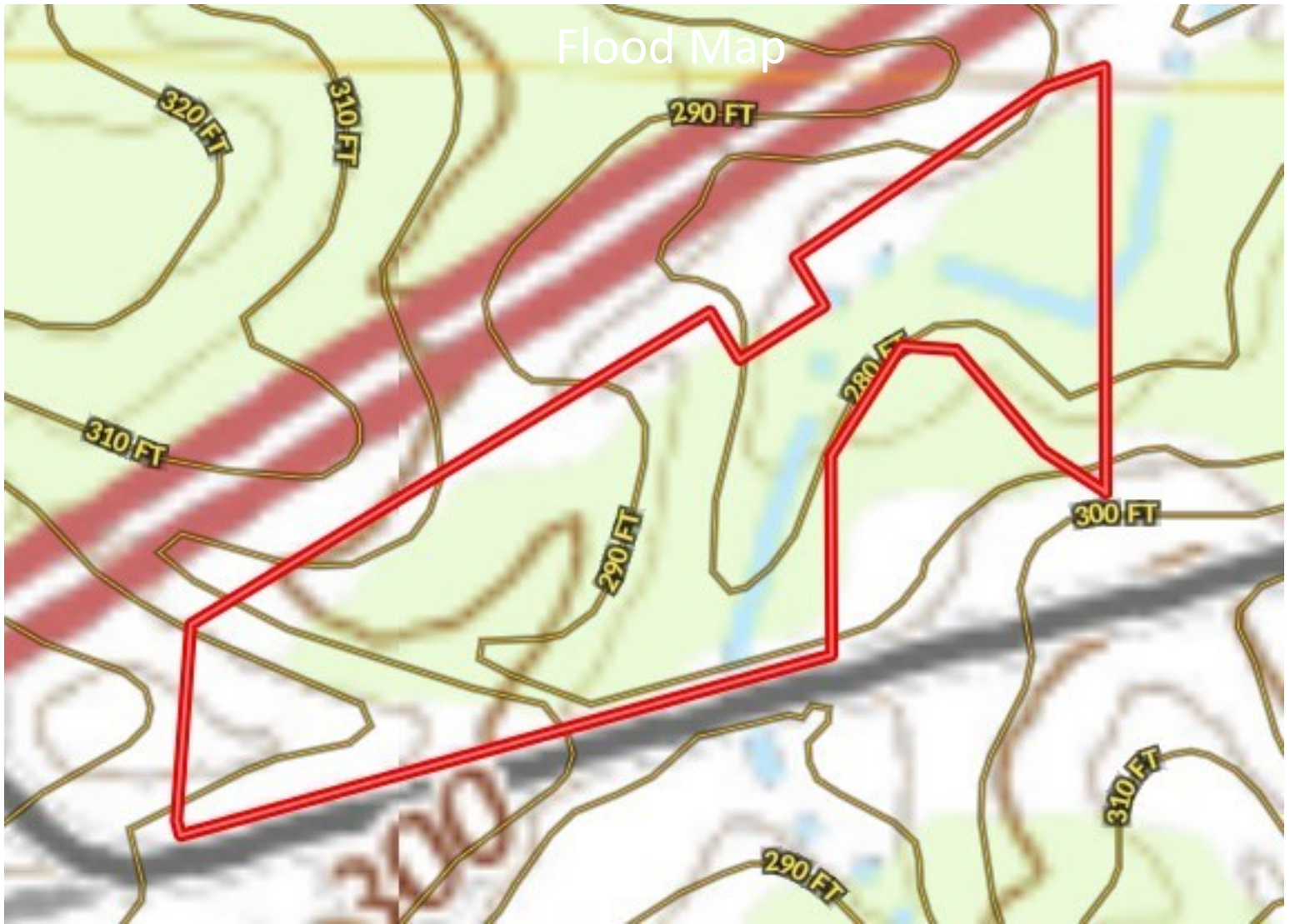


CLIF CANNON, REALTOR®
Clif@TomSmithLand.com
601.990.5070 office | 601.565.1070 cell



TomSmithLandandHomes.com

Information is believed to be accurate but not guaranteed.



Flood Map

Topographic Map

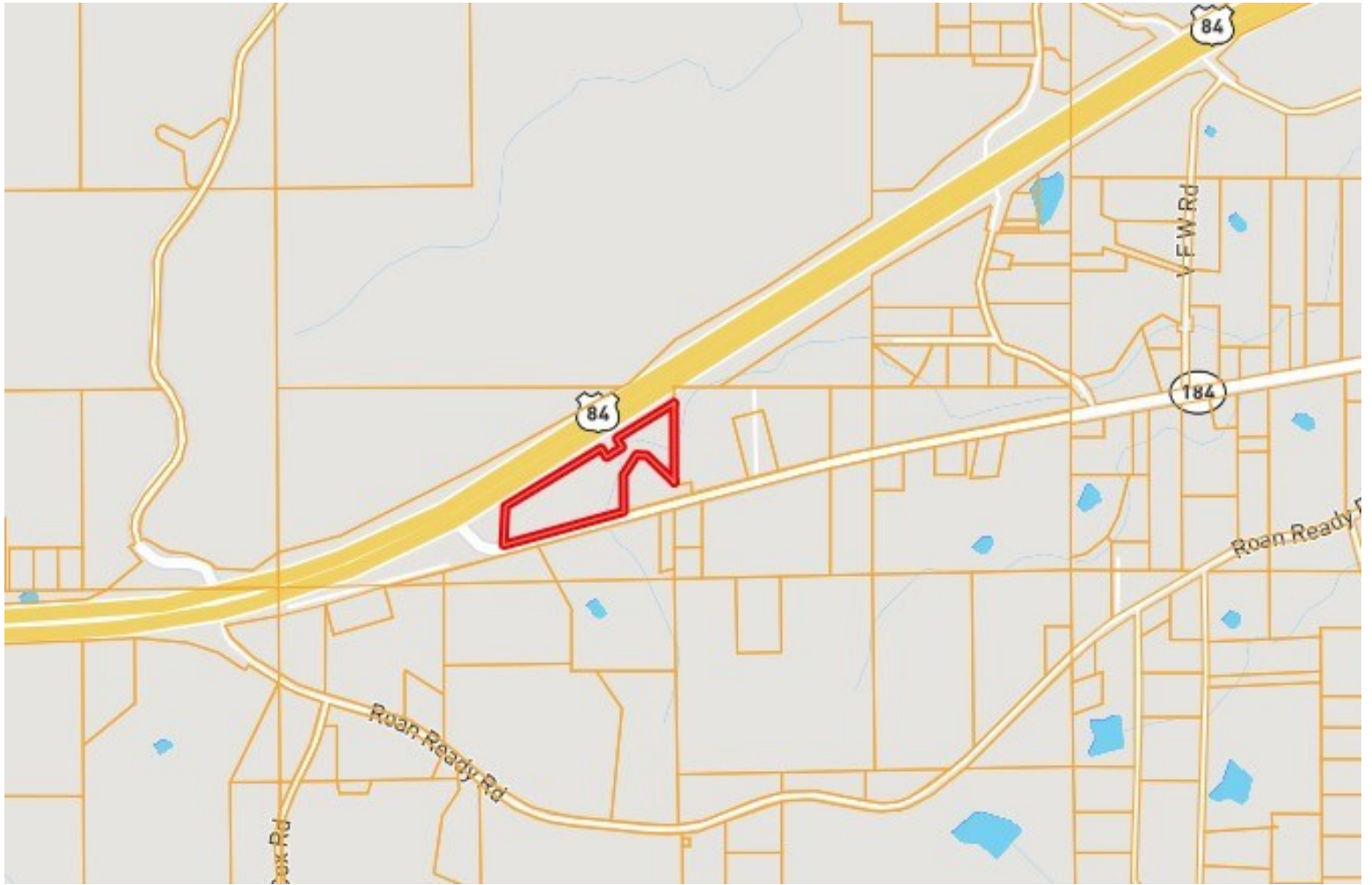


CLIF CANNON, REALTOR®
Clif@TomSmithLand.com
601.990.5070 office | 601.565.1070 cell



TomSmithLandandHomes.com

Information is believed to be accurate but not guaranteed.



Ownership Map

CLIF CANNON, REALTOR®

Clif@TomSmithLand.com

601.990.5070 office | 601.565.1070 cell



Expect More. Get More.



TomSmithLandandHomes.com

Information is believed to be accurate but not guaranteed.



Flood Map

CLIF CANNON, REALTOR®

Clif@TomSmithLand.com

601.990.5070 office | 601.565.1070 cell

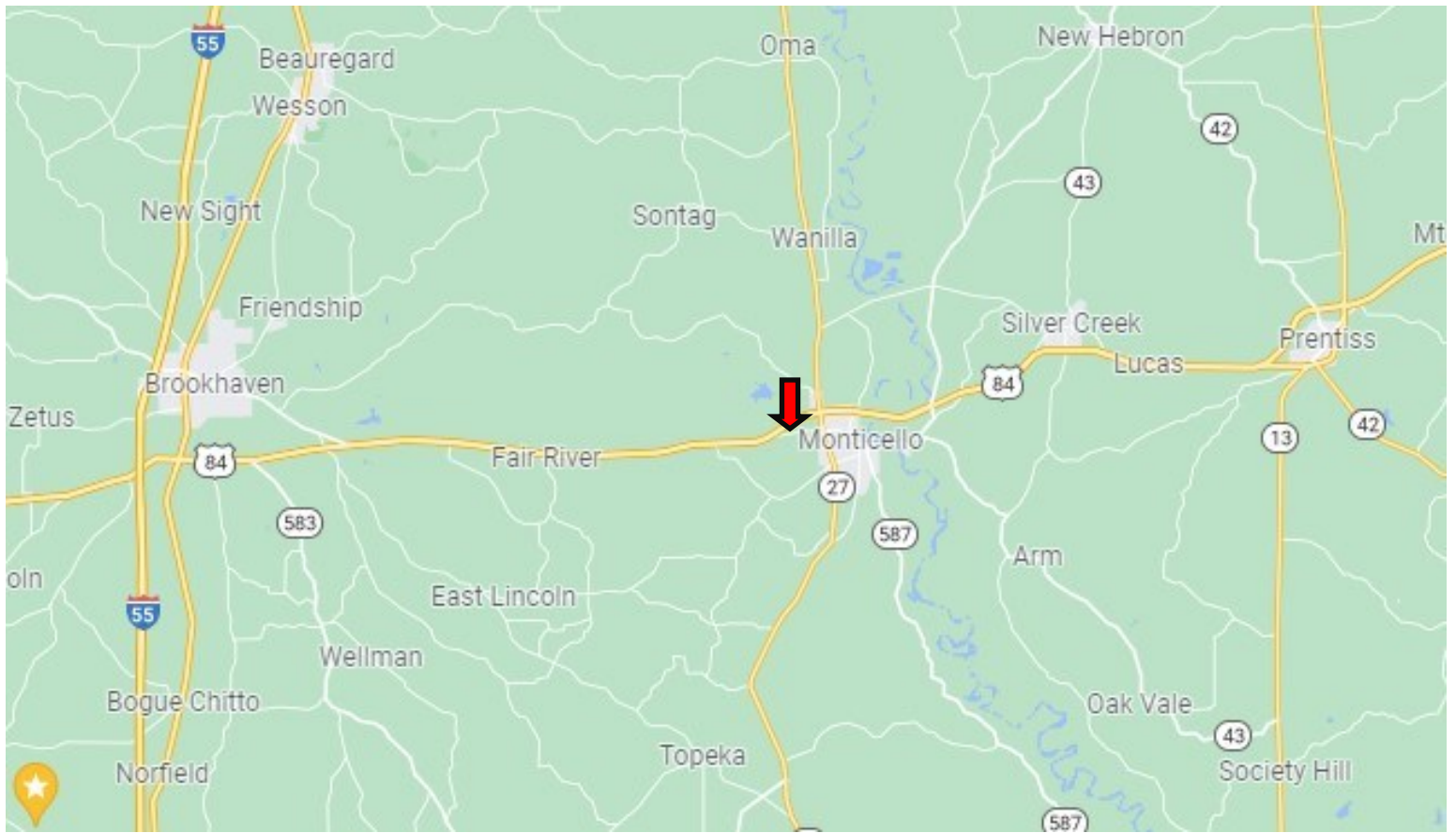


Expect More. Get More.



TomSmithLandandHomes.com

Information is believed to be accurate but not guaranteed.



Directional Map

Directions from the intersection of MS-27 and US-84 in Monticello, MS: Travel south on MS-27 for .5 miles. Turn right onto MS-184 W and travel for 1.6 miles. The property will be on the left.



CLIF CANNON, REALTOR®
Clif@TomSmithLand.com
601.990.5070 office | 601.565.1070 cell



TomSmithLandandHomes.com

Information is believed to be accurate but not guaranteed.