

80+/- Acres with Cabin Holmes County, MS



\$356,000

8829 Beulah Grove Road Durant, MS 39063

Excellent property with 80+/- acres of beautiful hardwood timber and spacious cabin. Excellent road system for easy access to any area on the property. Three food plots can be planted to attract the abundant deer and turkeys that inhabit this property. The cabin is 2,200 sq. ft. that will easily sleep 8-10 with two bedrooms, two lofts and two full baths. Spacious den and galley style kitchen. Mudroom with washer and dryer. The rear of the cabin has a large deck looking into the woods for peaceful enjoyment. This place has everything one could desire in a hunting getaway. Call Bruce today for a showing!

Directions from Highway 12 in Lexington, MS: Turn left onto Highway 17 and travel 11 miles, turn right on Wash Bailey Road. Travel 6.6 miles, turn right on Beulah Grove Road. Travel approximately 1.5 miles and the property is on the right.



call me today!

BRUCE WEST, REALTOR®

Bruce@TomSmithLand.com

662.441.2500 office | 662.873.3007 cell



Expect More. Get More.

TomSmithLandandHomes.com

Information is believed to be accurate but not guaranteed.



BRUCE WEST, REALTOR®
 Bruce@TomSmithLand.com
 662.441.2500 office | 662.873.3007 cell



TomSmithLandandHomes.com

Information is believed to be accurate but not guaranteed.



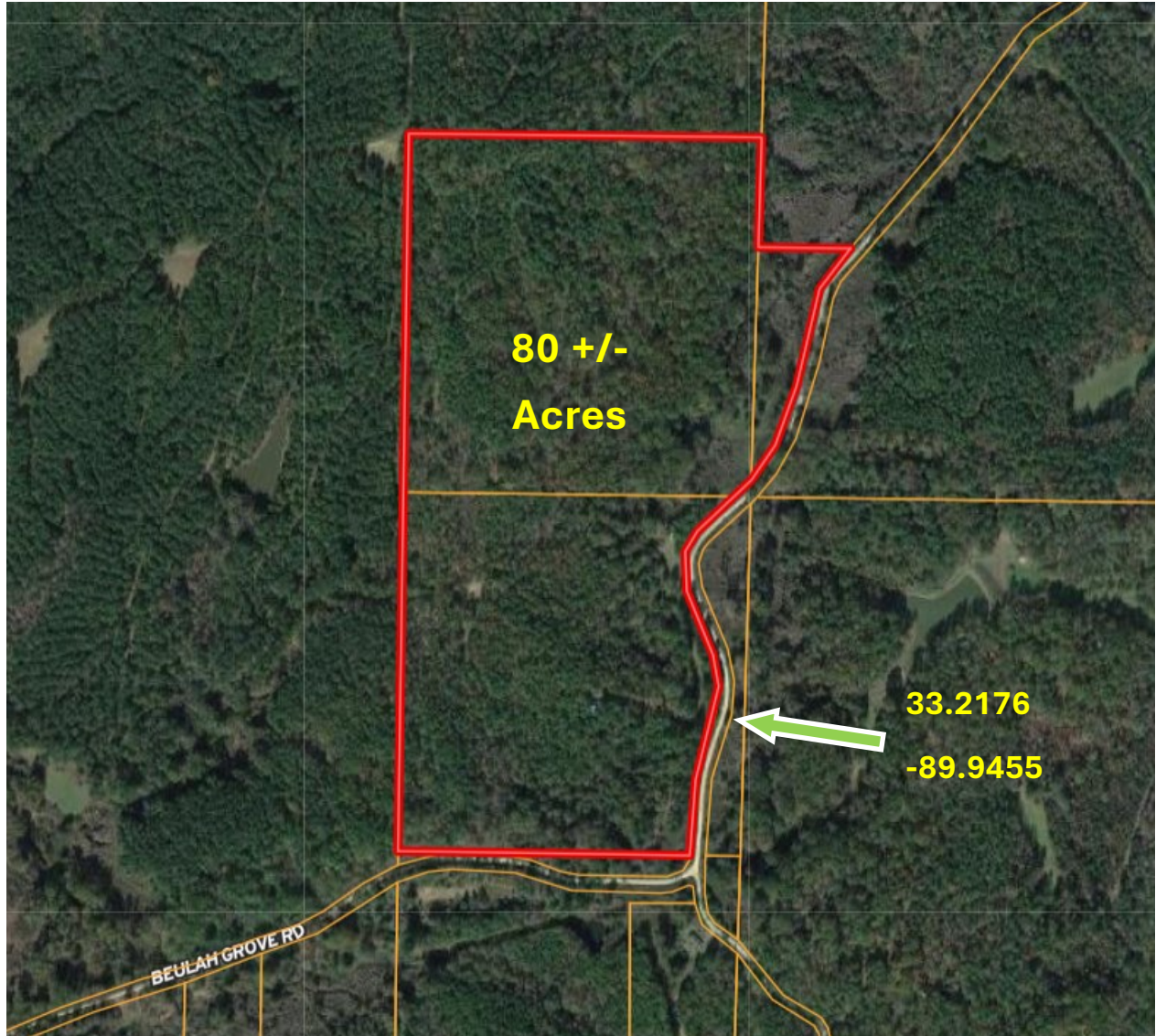
BRUCE WEST, REALTOR®
 Bruce@TomSmithLand.com
 662.441.2500 office | 662.873.3007 cell



TomSmithLandandHomes.com

Information is believed to be accurate but not guaranteed.

AERIAL MAP



[Click for Interactive Map](#)



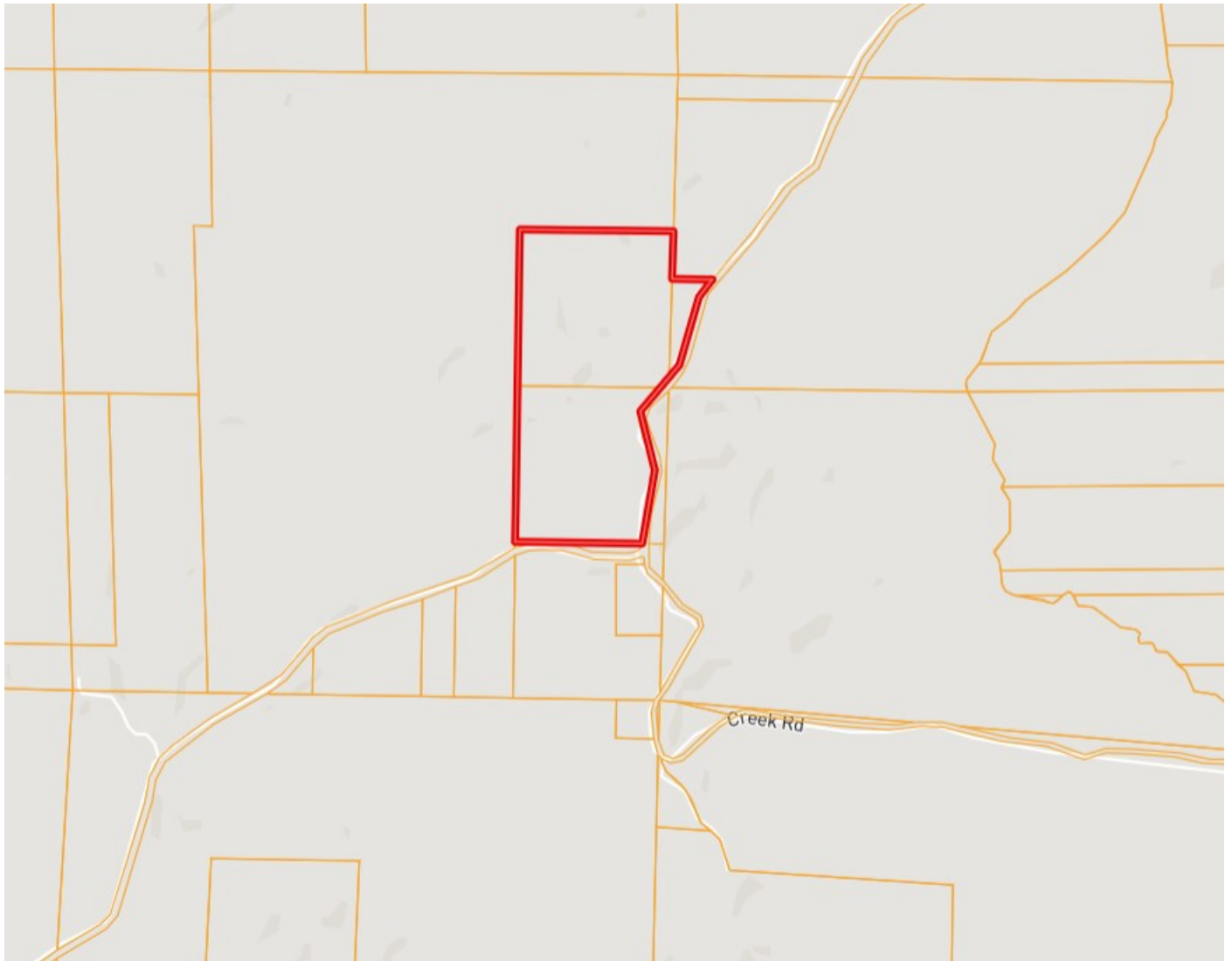
BRUCE WEST, REALTOR®
Bruce@TomSmithLand.com
662.441.2500 office | 662.873.3007 cell



TomSmithLandandHomes.com

Information is believed to be accurate but not guaranteed.

OWNERSHIP MAP



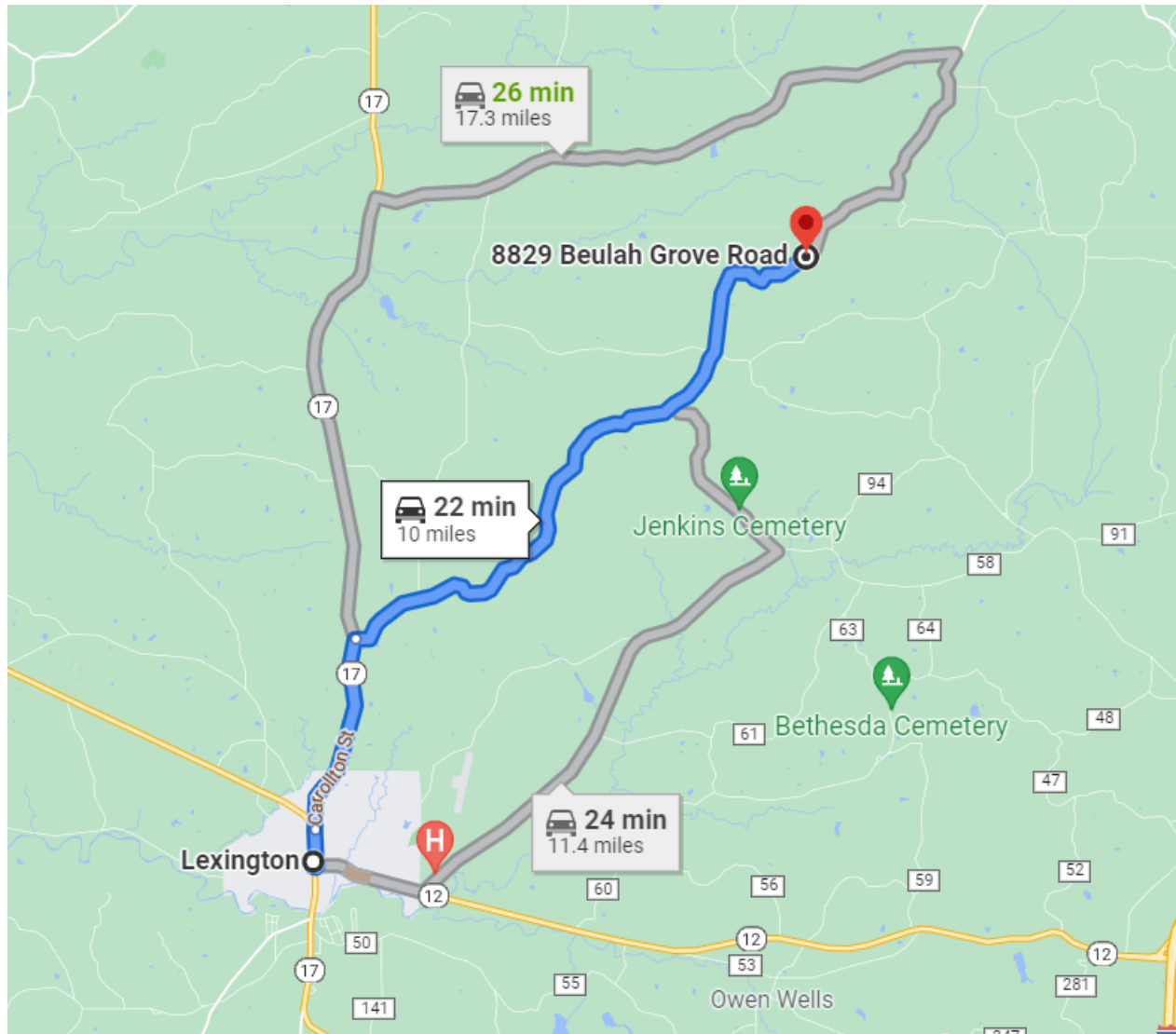
BRUCE WEST, REALTOR®
Bruce@TomSmithLand.com
662.441.2500 office | 662.873.3007 cell



TomSmithLandandHomes.com

Information is believed to be accurate but not guaranteed.

DIRECTIONAL MAP



Directions from Highway 12 in Lexington, MS: Turn left onto Highway 17 and travel 11 miles, turn right on Wash Bailey Road. Travel 6.6 miles, turn right on Beulah Grove Road. Travel approximately 1.5 miles and the property is on the right.



BRUCE WEST, REALTOR®
Bruce@TomSmithLand.com
662.441.2500 office | 662.873.3007 cell



TomSmithLandandHomes.com

Information is believed to be accurate but not guaranteed.