

12± COMMERCIAL ACRES IN LUMBERTON, MS

PEARL RIVER COUNTY, MS

\$850,000

Excellent commercial acreage opportunity in Pearl River County, MS, just outside of Lumberton, MS! This 12± acre tract has approximately 1,200± feet of road frontage on I-59 and US-13, and provides great visibility for many business ventures. This property is convenient to Hattiesburg, MS, New Orleans, LA, and the Gulf Coast with two major road systems. Utilities are available and the property already features a concrete parking lot. There are plenty of businesses that would be excellent for this property.

Directions from the cross roads of US-11 and MS-13 S/E in Lumberton, MS: Travel east on MS-13 S/E for 2.2 miles, the property will be on the right.



call me today!

PRESTON SMITH, MANAGING BROKER
Preston@TomSmithLand.com
601.990.5070 office | 601.209.7150 cell



TomSmithLandandHomes.com

Information is believed to be accurate but not guaranteed.



call me today!

PRESTON SMITH, MANAGING BROKER
Preston@TomSmithLand.com
601.990.5070 office | 601.209.7150 cell



TomSmithLandandHomes.com

Information is believed to be accurate but not guaranteed.

Aerial Map



call me today!

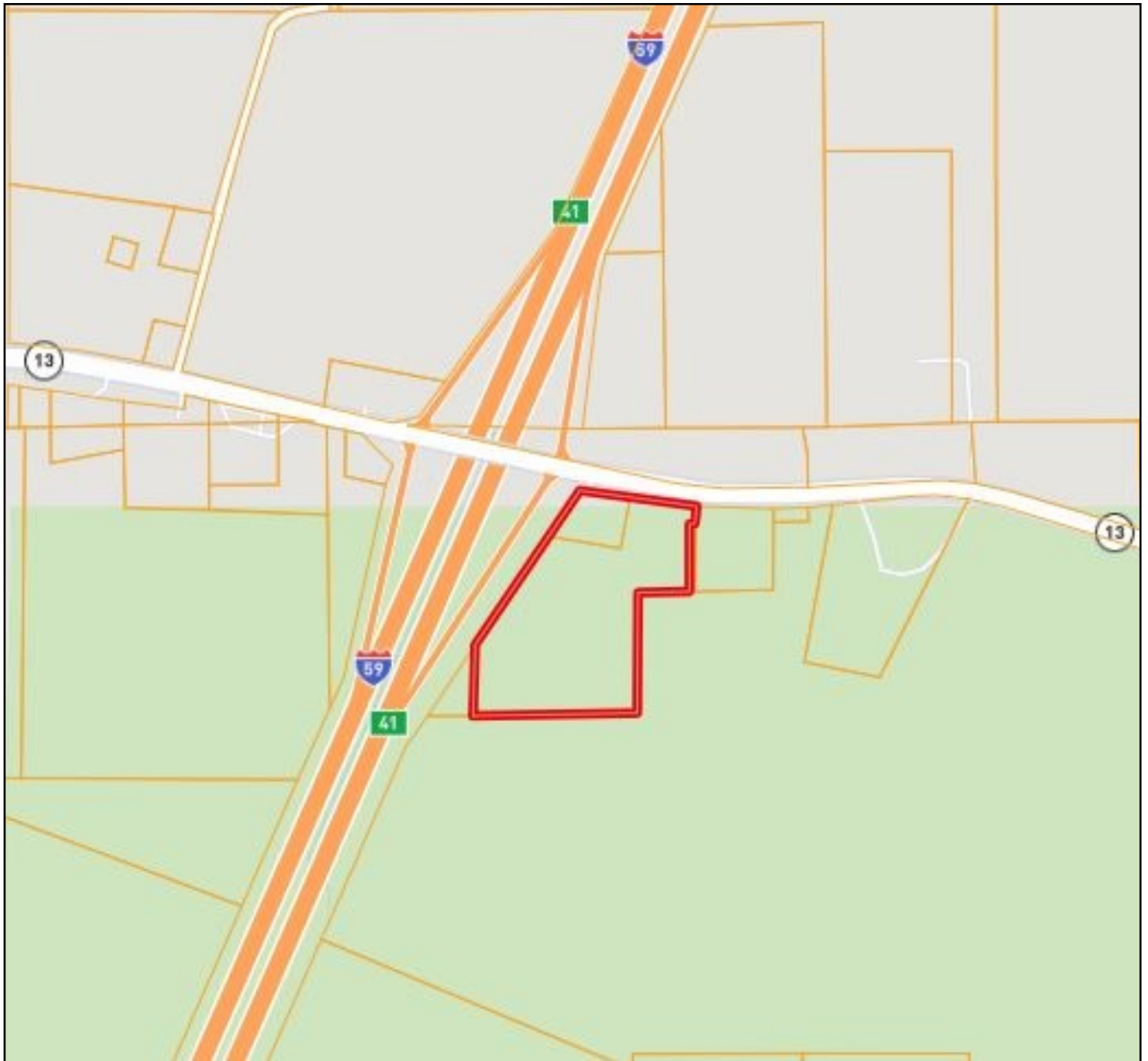
PRESTON SMITH, MANAGING BROKER
Preston@TomSmithLand.com
601.990.5070 office | 601.209.7150 cell



TomSmithLandandHomes.com

Information is believed to be accurate but not guaranteed.

Ownership Map



call me today!

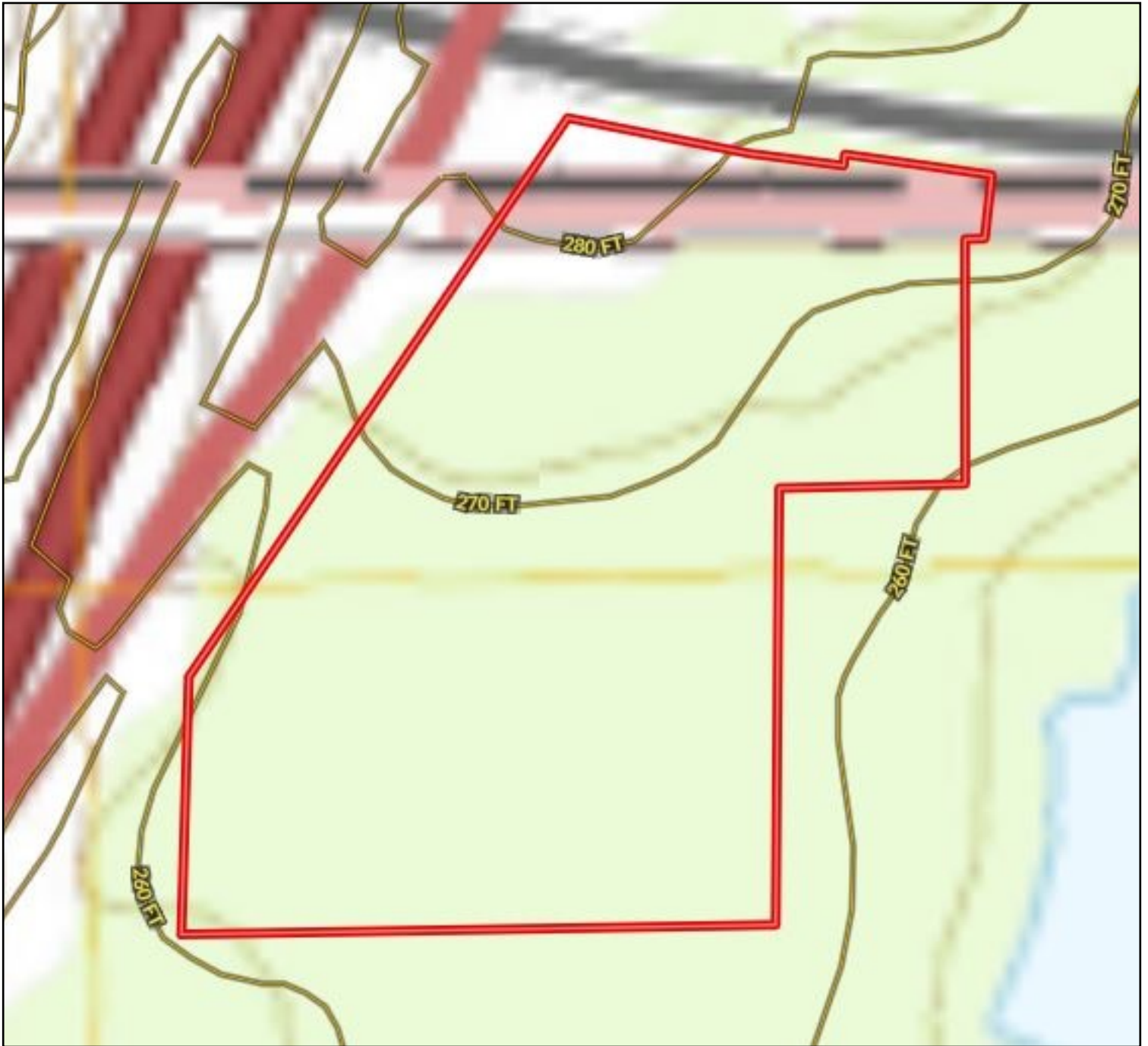
PRESTON SMITH, MANAGING BROKER
Preston@TomSmithLand.com
601.990.5070 office | 601.209.7150 cell



TomSmithLandandHomes.com

Information is believed to be accurate but not guaranteed.

Topography Map



call me today!

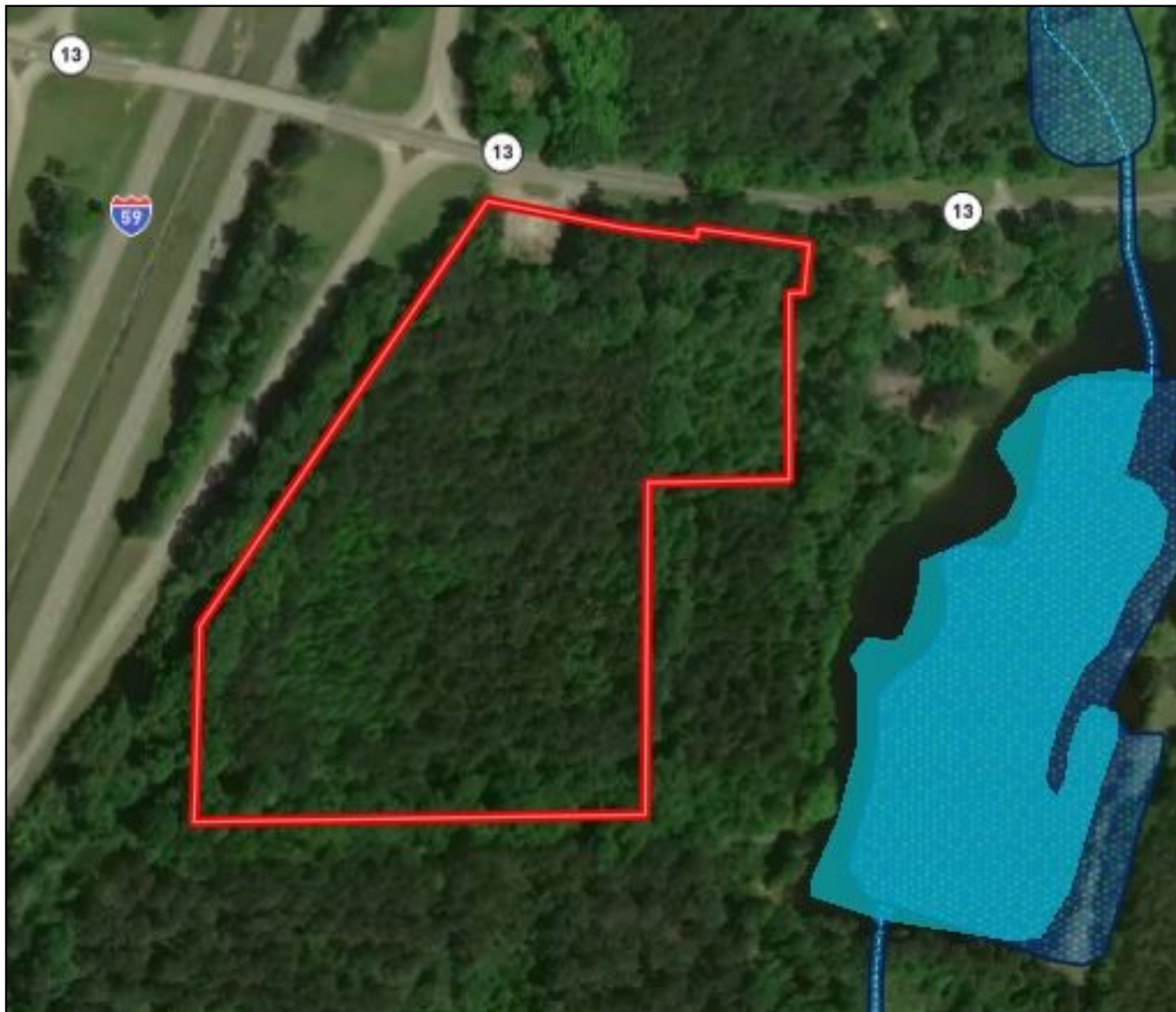
PRESTON SMITH, MANAGING BROKER
Preston@TomSmithLand.com
601.990.5070 office | 601.209.7150 cell



TomSmithLandandHomes.com

Information is believed to be accurate but not guaranteed.

Flood Map



call me today!

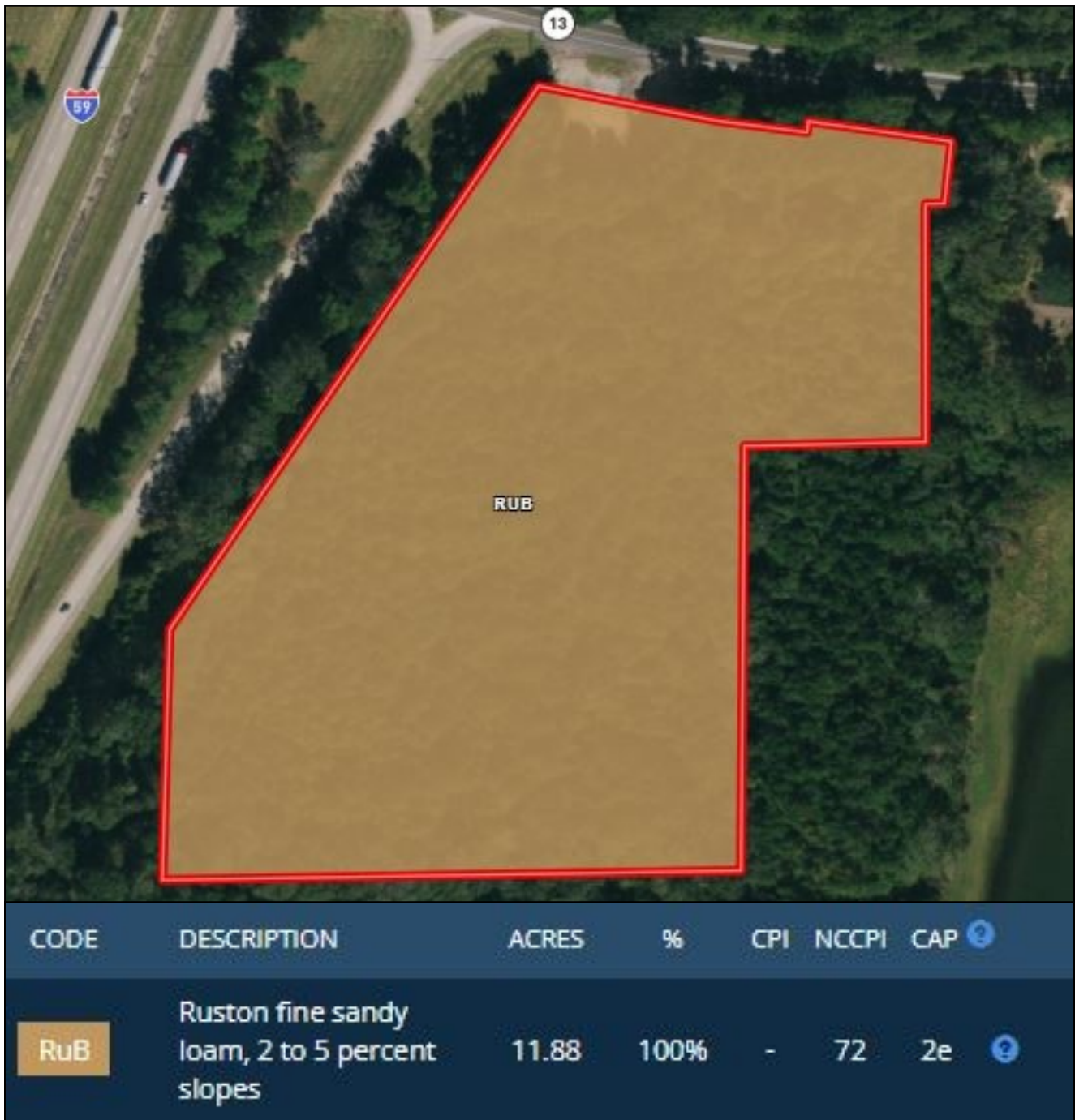
PRESTON SMITH, MANAGING BROKER
Preston@TomSmithLand.com
601.990.5070 office | 601.209.7150 cell



TomSmithLandandHomes.com

Information is believed to be accurate but not guaranteed.

Soil Map



call me today!

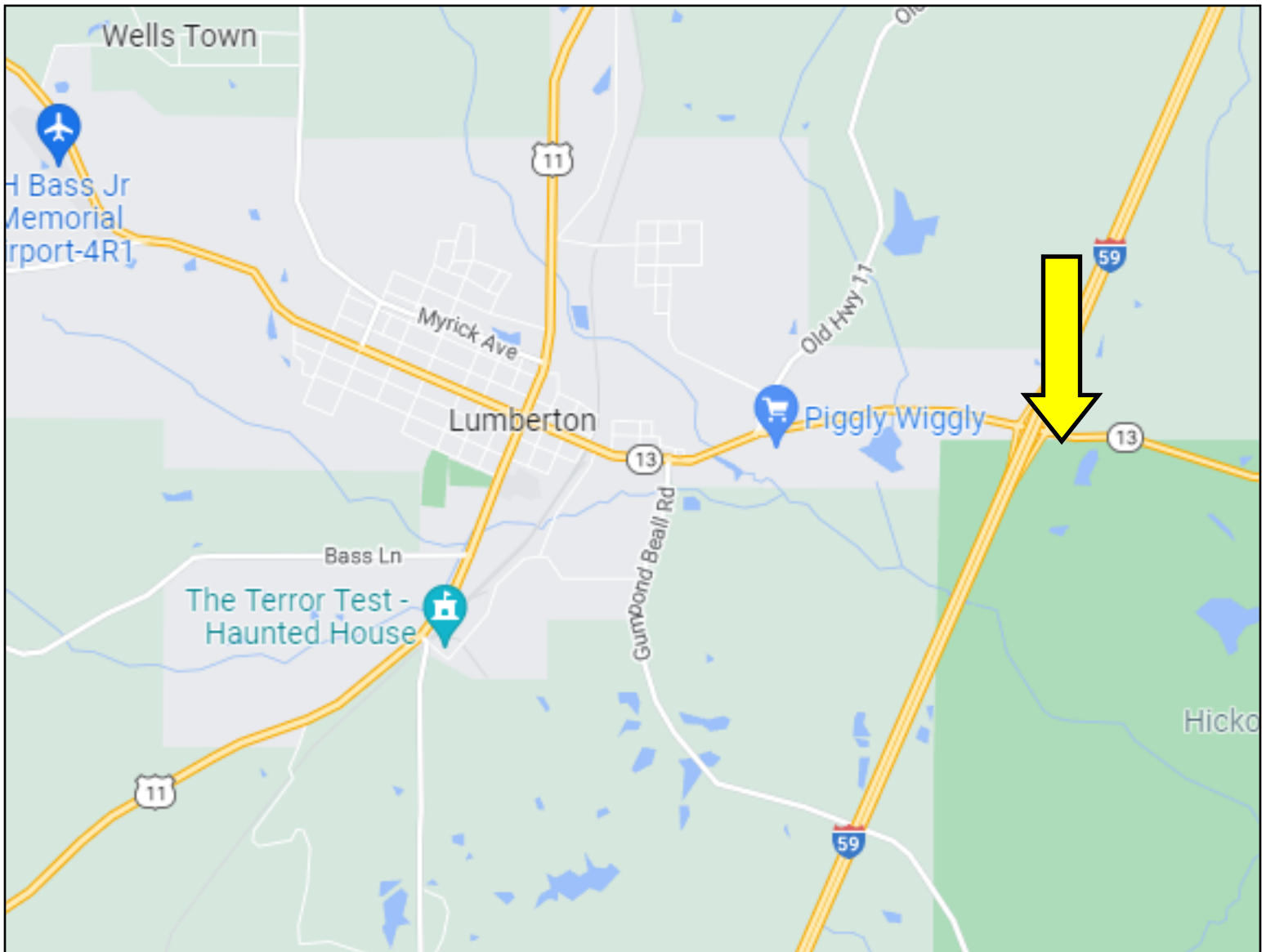
PRESTON SMITH, MANAGING BROKER
 Preston@TomSmithLand.com
 601.990.5070 office | 601.209.7150 cell



TomSmithLandandHomes.com

Information is believed to be accurate but not guaranteed.

Directional Map



Directions from the cross roads of US-11 and MS-13 S/E in Lumberton, MS: Travel east on MS-13 S/E for 2.2 miles, the property will be on the right.



call me today!

PRESTON SMITH, MANAGING BROKER
Preston@TomSmithLand.com
601.990.5070 office | 601.209.7150 cell



TomSmithLandandHomes.com

Information is believed to be accurate but not guaranteed.