



5.2+/- Acre Commercial Zoned Tract Lincoln County, MS



\$70,000

Take a look at this 5.2+/- unimproved acres situated inside the city limits of Brookhaven. This Lincoln County, MS property is zoned Commercial C-3 Highway, which offers a ton of business opportunities!! The acreage is located with road frontage on S First Street and adjoins the new Mill Creek residential development with great access to the four lane Highway 84. Utilities are available at the road. This property does have zoning restrictions. Call Sabrina today to schedule a viewing!

Directions from the courthouse in Brookhaven, MS: Travel S on MS-583 S/S 1st Street for 1.3 miles. The property is on the right just before the Millcreek Residential Development.



call me today!

SABRINA WOLFF, REALTOR®
Sabrina@TomSmithHomes.com
601.990.5070 office | 601.754.3763 cell



TomSmithLandandHomes.com

Information is believed to be accurate but not guaranteed.



Call me today!

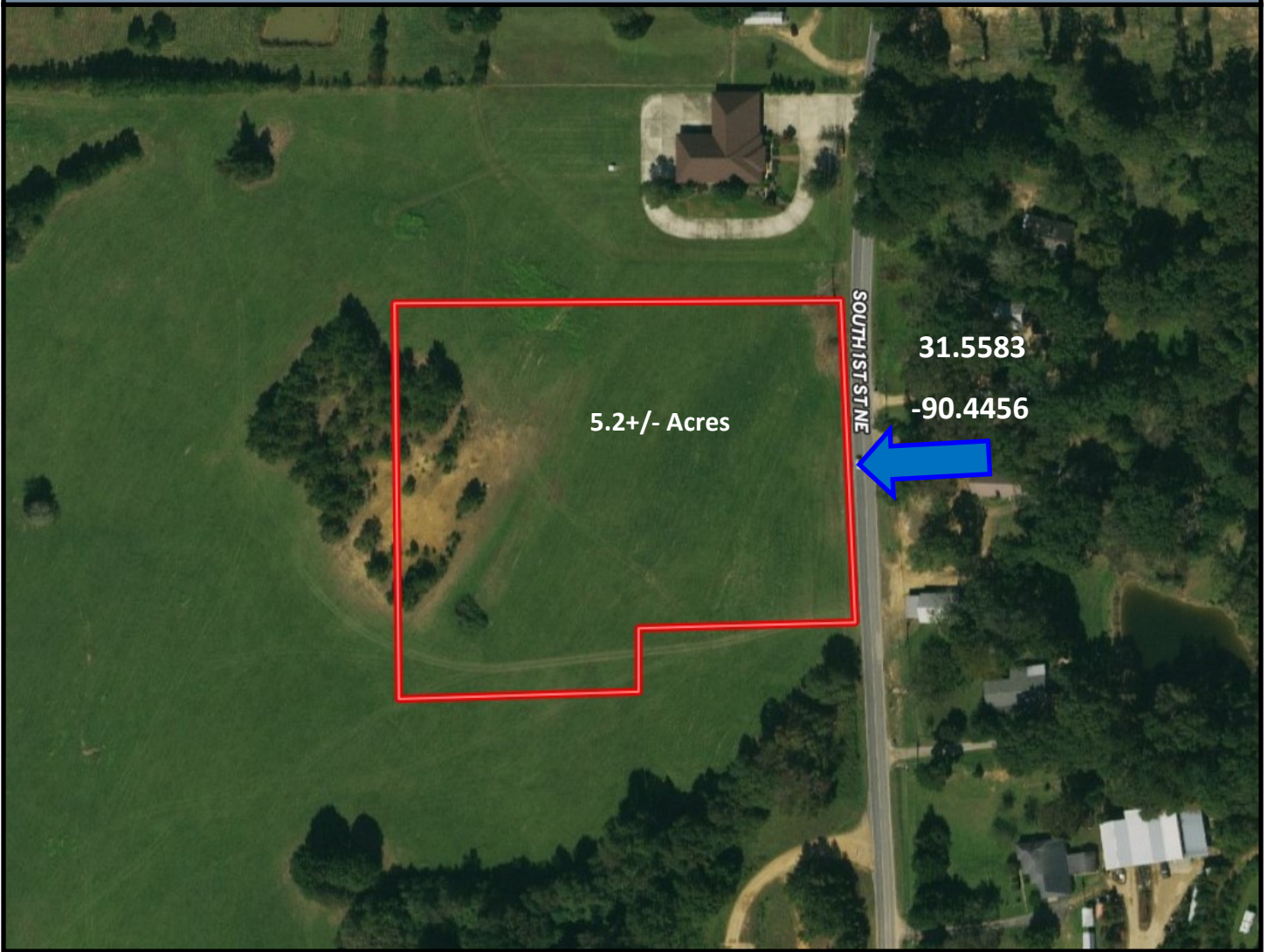
SABRINA WOLFE, REALTOR®
Sabrina@TomSmithHomes.com
601.990.5070 office | 601.754.3763 cell



TomSmithLandandHomes.com

Information is believed to be accurate but not guaranteed.

Aerial Map



Call me today!

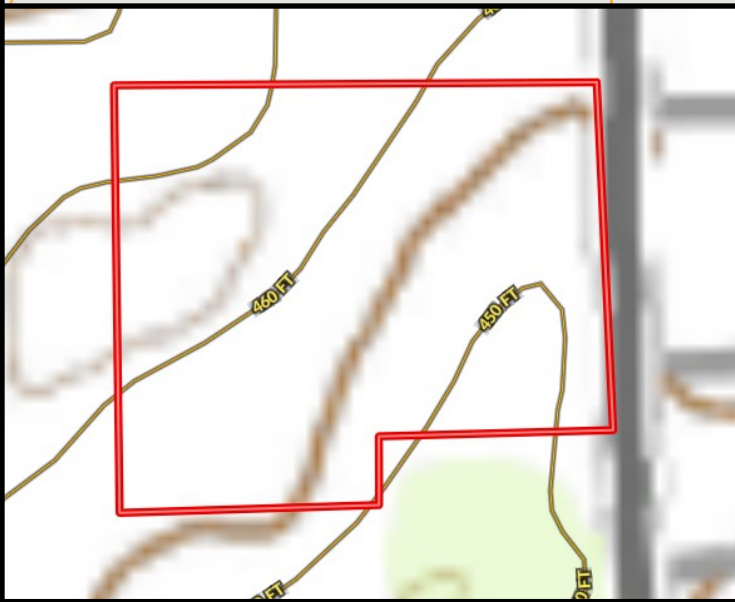
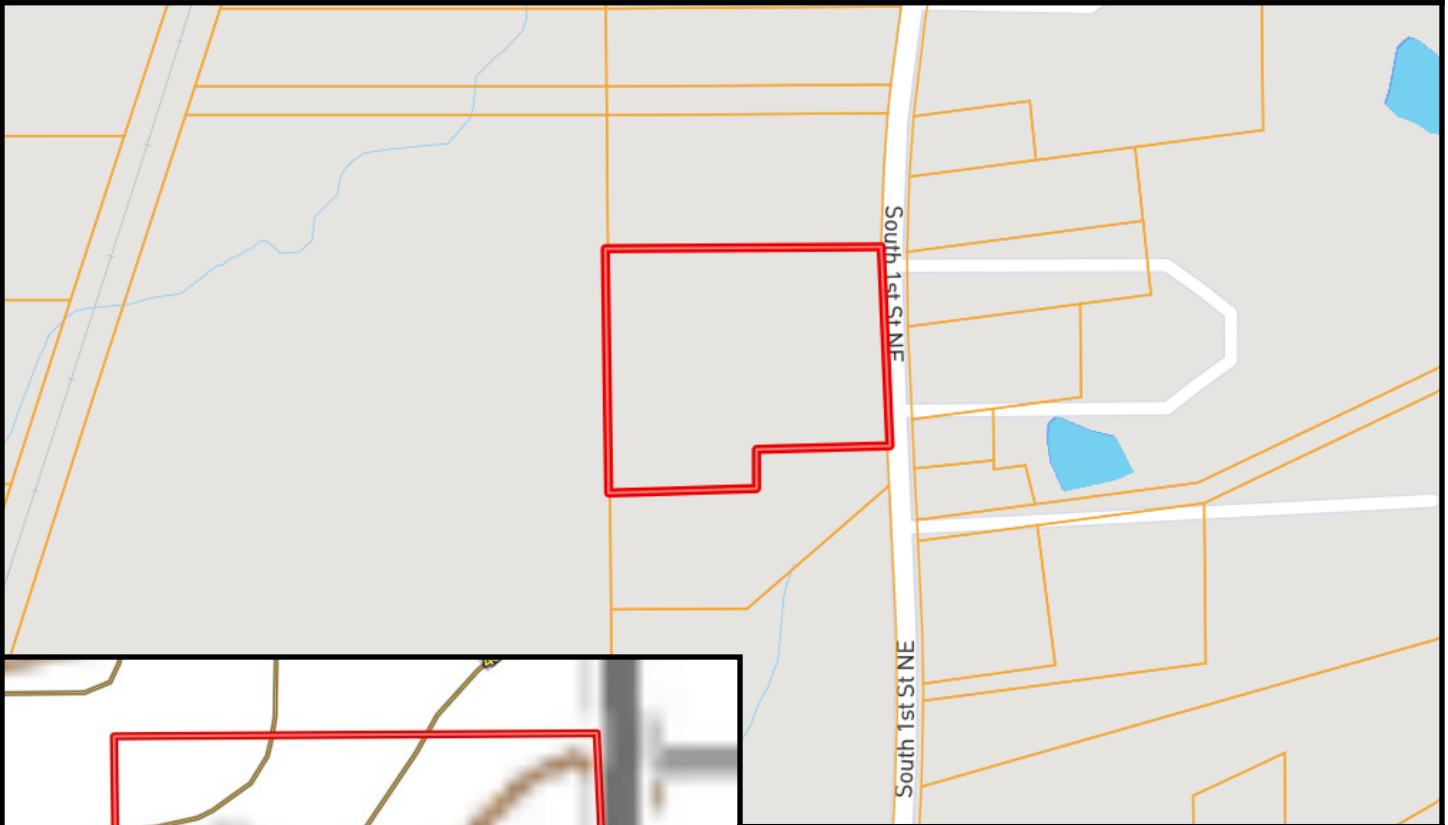
SABRINA WOLFF, REALTOR®
Sabrina@TomSmithHomes.com
601.990.5070 office | 601.754.3763 cell



TomSmithLandandHomes.com

Information is believed to be accurate but not guaranteed.

Ownership Map



Topo Map



Call me today!

SABRINA WOLFF, REALTOR®

Sabrina@TomSmithHomes.com

601.990.5070 office | 601.754.3763 cell

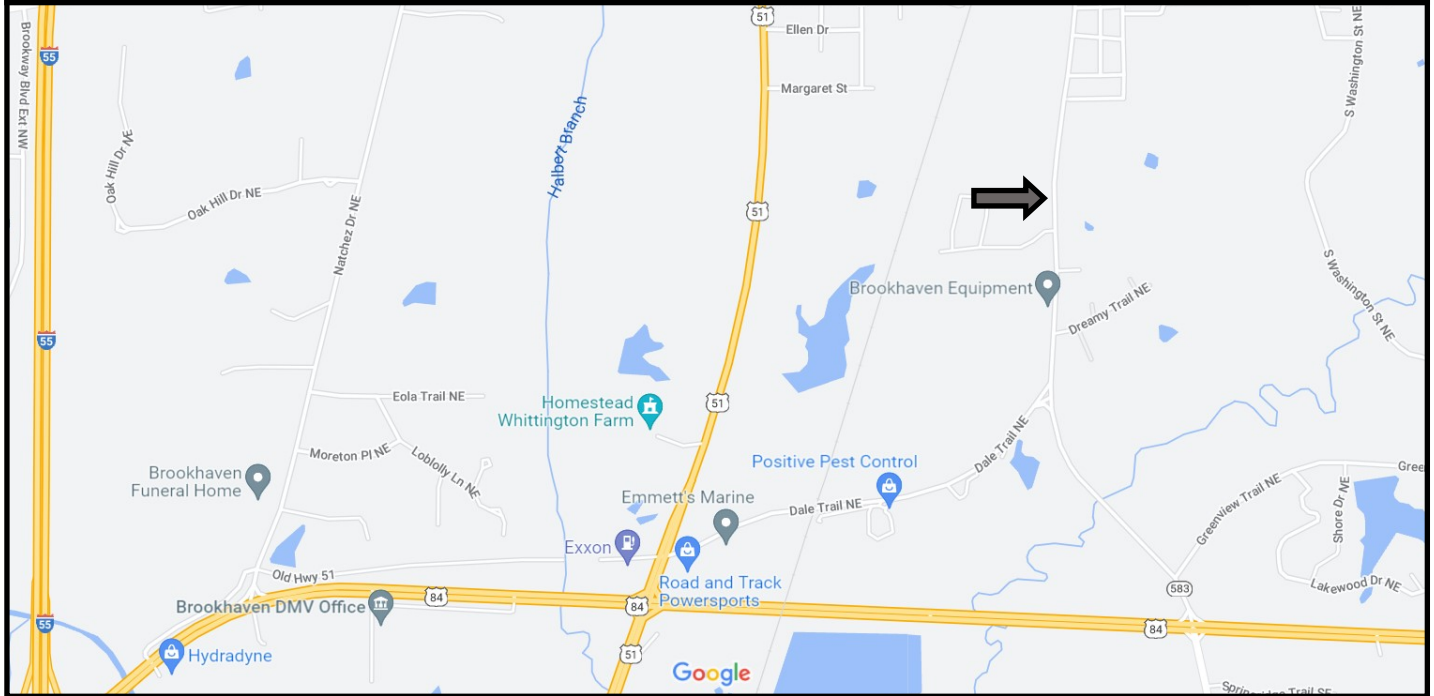


Expect More. Get More.

TomSmithLandandHomes.com

Information is believed to be accurate but not guaranteed.

Directional Map



Directions from the courthouse in Brookhaven, MS: Travel S on MS-583 S/S 1st Street for 1.3 miles. The property is on the right just before the Millcreek Residential Development.



call me today!

SABRINA WOLFF, REALTOR®
Sabrina@TomSmithHomes.com
601.990.5070 office | 601.754.3763 cell



Expect More. Get More.

TomSmithLandandHomes.com

Information is believed to be accurate but not guaranteed.