

Great Investment Property or Home

Cleveland, MS * Bolivar County



AGENT OWNED

\$132,500

317 Shumate Circle Cleveland, MS 38732

This 1,360+/- sq. ft., Bolivar County home has three bedrooms and two baths. You will find a cozy den with gorgeous wood floors when you open the front door. There is a nice study or sitting room off the den. The home is next to Delta State University and centrally located to everything Cleveland has to offer. Call today for your private showing.

Directions from the intersection of Hwy 8 and Hwy 61 Cleveland, MS: Travel west onto E Sunflower Rd towards N Chrisman Ave for approximately 1.1 miles, turn right onto Shumate Circle and in 0.1 miles the destination is on the left. Address: 317 Shumate Circle Cleveland, MS 38732



Call me today!

TRACEY BELL, MANAGING BROKER
Tracey@TomSmithLand.com

662.441.2500 office | 662.719.4720 cell



Expect More. Get More.

TomSmithLandandHomes.com

Information is believed to be accurate but not guaranteed.



TRACEY BELL, MANAGING BROKER
Tracey@TomSmithLand.com
662.441.2500 office | 662.719.4720 cell



TomSmithLandandHomes.com

Information is believed to be accurate but not guaranteed.



TRACEY BELL, MANAGING BROKER
Tracey@TomSmithLand.com
662.441.2500 office | 662.719.4720 cell



TomSmithLandandHomes.com

Information is believed to be accurate but not guaranteed.



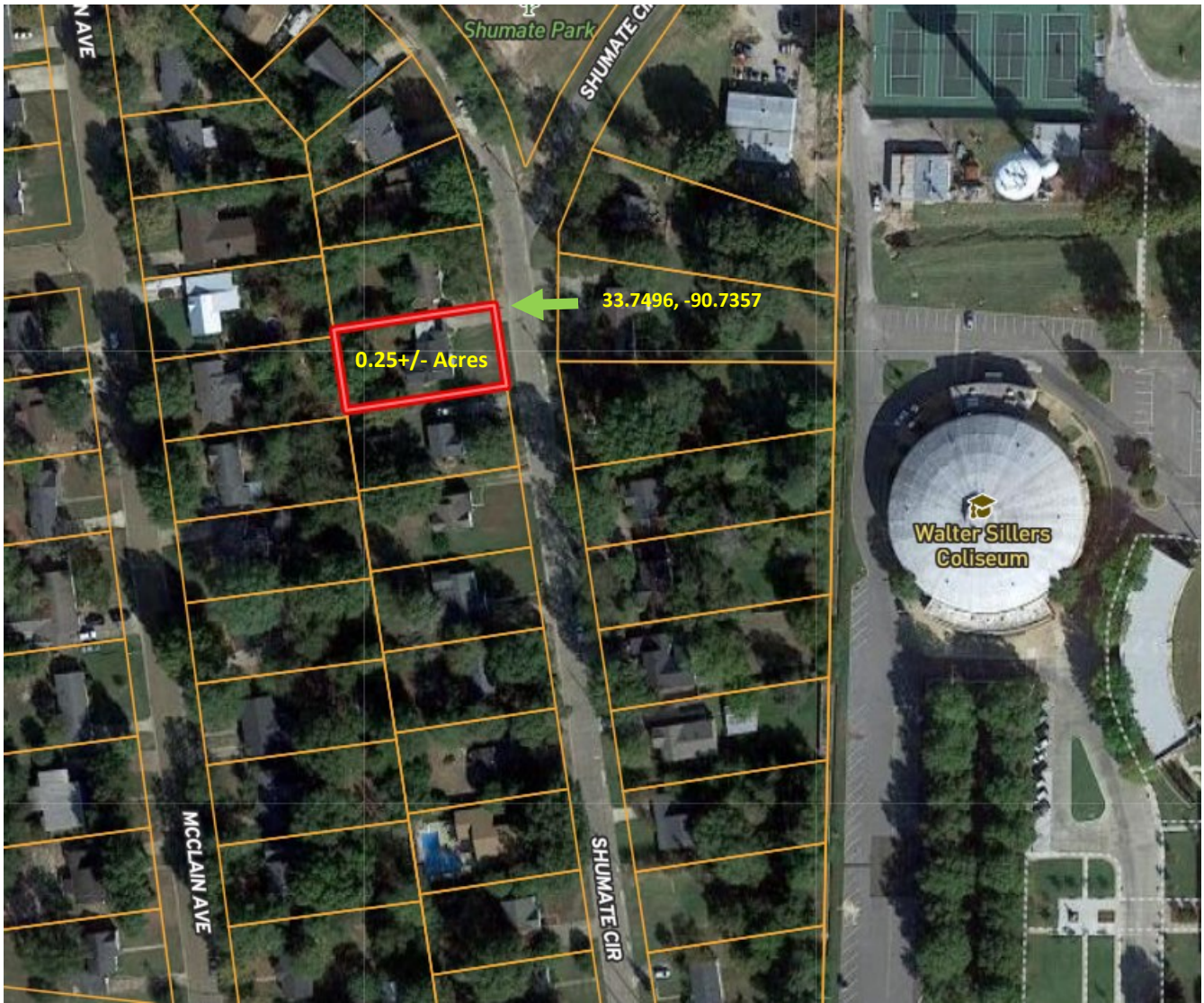
TRACEY BELL, MANAGING BROKER
Tracey@TomSmithLand.com
662.441.2500 office | 662.719.4720 cell



TomSmithLandandHomes.com

Information is believed to be accurate but not guaranteed.

AERIAL MAP



[Click for Interactive Map](#)



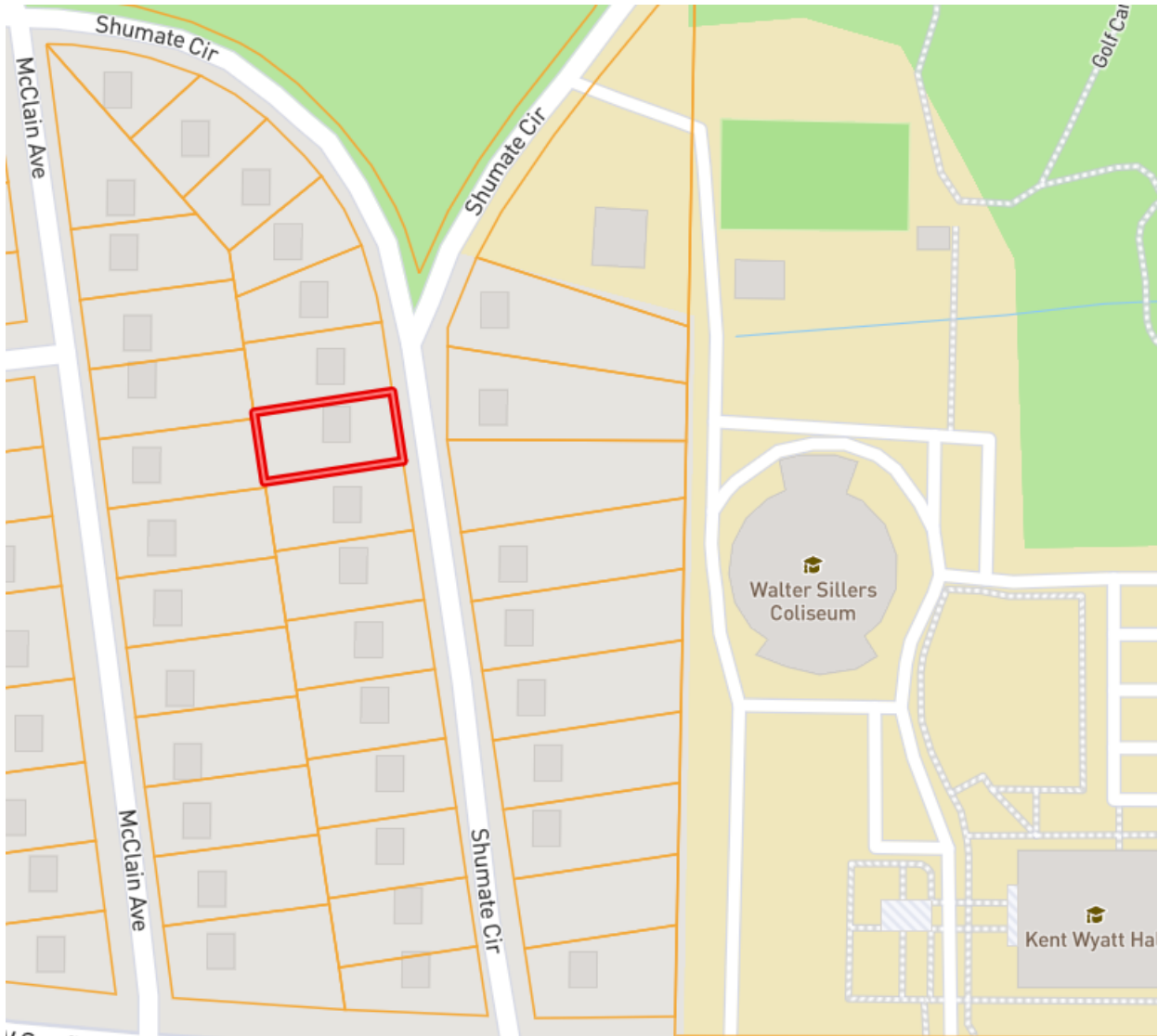
TRACEY BELL, MANAGING BROKER
Tracey@TomSmithLand.com
662.441.2500 office | 662.719.4720 cell



TomSmithLandandHomes.com

Information is believed to be accurate but not guaranteed.

OWNERSHIP MAP



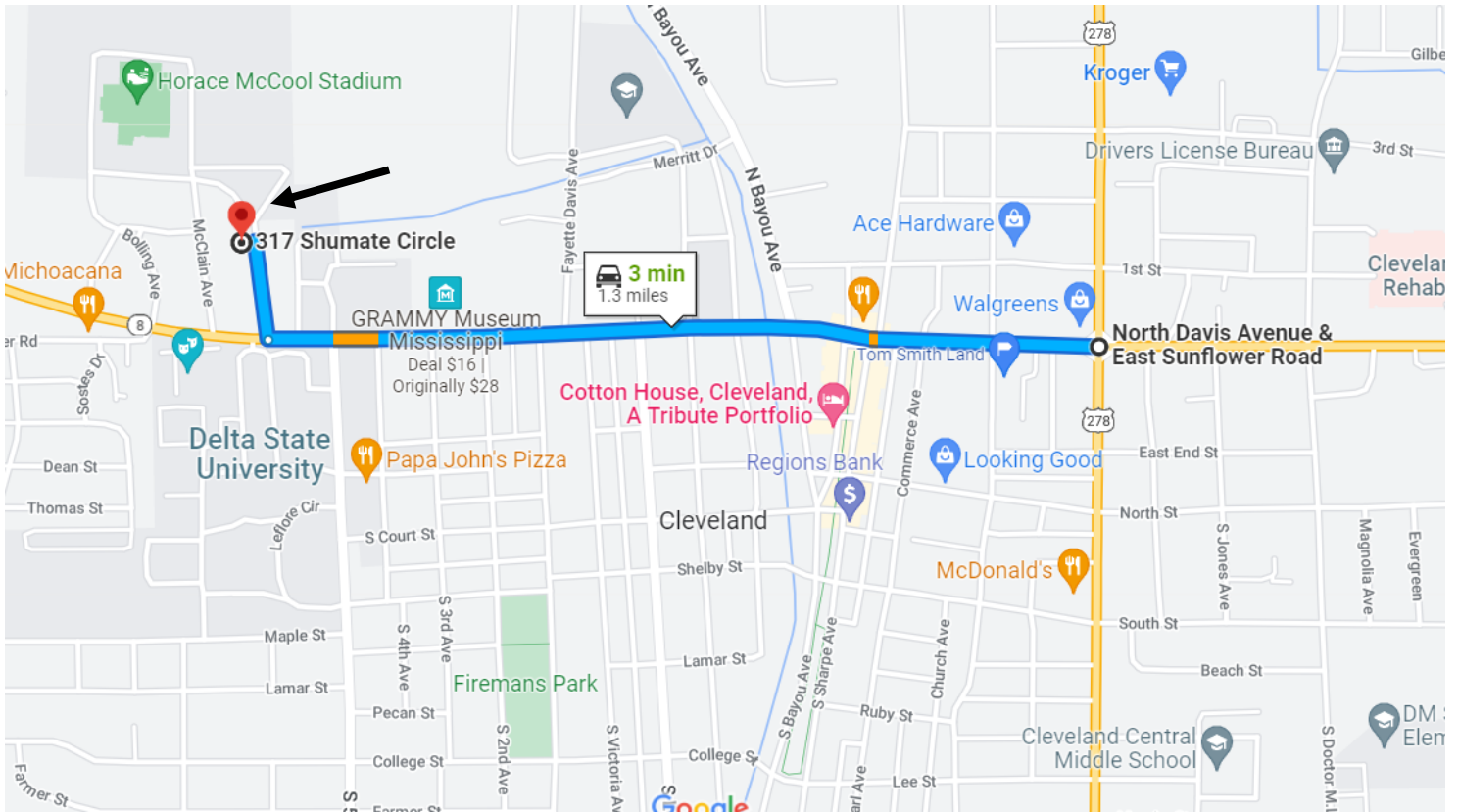
TRACEY BELL, MANAGING BROKER
Tracey@TomSmithLand.com
662.441.2500 office | 662.719.4720 cell



TomSmithLandandHomes.com

Information is believed to be accurate but not guaranteed.

DIRECTIONAL MAP



317 Shumate Circle Cleveland, MS 38732

Directions from the intersection of Hwy 8 and Hwy 61 Cleveland, MS: Travel west onto E Sunflower Rd towards N Chrisman Ave for approximately 1.1 miles, turn right onto Shumate Circle and in 0.1 miles the destination is on the left. Address: 317 Shumate Circle Cleveland, MS 38732



call me today!

TRACEY BELL, MANAGING BROKER

Tracey@TomSmithLand.com

662.441.2500 office | 662.719.4720 cell



Expect More. Get More.

TomSmithLandandHomes.com

Information is believed to be accurate but not guaranteed.