

Build Your Dream Home! 20+/- Acres in Madison County, MS



\$320,000

Directions from Flora, MS: From the intersection of MS-22E/Canton-Flora Road and Kearney Park Road travel north on Kearny Park Road for 3.3 miles. Turn right on Livingston Vernon Road and travel for 2.0 miles. Turn left onto Lep Childress Road and continue for 0.3 miles. Turn left at the 1st cross street onto Willow Way and travel for 0.3 miles. Property is located on the left.

Click [HERE](#) for Google Maps



Call me today!

MICHAEL OSWALT, ASSOCIATE BROKER®

Michael@TomSmithLand.com

601.898.2772 office | 662.719.3967 cell

Licensed in MS, AR & MO



Expect More. Get More.

TomSmithLandandHomes.com

Information is believed to be accurate but not guaranteed.

Welcome to The Flora 20, country living just over 2 miles northeast of Flora, Mississippi, in Madison County! This property offers the perfect mix of open pasture upfront with scattered oaks along Cane Creek in the back. As you pull up on Willow Way Road (paved), you will notice a nice crown that would make a beautiful homesite overlooking your own mini-farm. The property enjoys over 700± frontage, so picking a driveway area should be easy. If on your list, the topography on the back south end could possibly support a pond. You will also find a good clearing in the oaks that would make a beautiful wildlife plot for your homeplace hunting needs or wildlife watching (deer were bedded there on initial inspection). Now for Cane Creek; it's deep, lined with big timber, and gravel bottomed in some areas. You will likely have a hard time keeping the kids or grandkids out of it. It's usually hard to find this type of diversity on a 20± acre tract, especially only a few minutes from Flora and 30 minutes from Madison. If you have been waiting on property that would make your perfect country living setting, come take a look at The Flora 20 today. Call Michael Oswalt for your private showing! 2020 taxes were \$202.38



MICHAEL OSWALT, ASSOCIATE BROKER®
Michael@TomSmithLand.com
601.898.2772 office | 662.719.3967 cell
Licensed in MS, AR & MO



TomSmithLandandHomes.com

Information is believed to be accurate but not guaranteed.



MICHAEL OSWALT, ASSOCIATE BROKER®
 Michael@TomSmithLand.com
 601.898.2772 office | 662.719.3967 cell
 Licensed in MS, AR & MO



TomSmithLandandHomes.com

Information is believed to be accurate but not guaranteed.



MICHAEL OSWALT, ASSOCIATE BROKER®
 Michael@TomSmithLand.com
 601.898.2772 office | 662.719.3967 cell
 Licensed in MS, AR & MO



TomSmithLandandHomes.com

Information is believed to be accurate but not guaranteed.



MORE THAN 15K FOLLOWERS ON FACEBOOK

2011-2021 AMERICA'S BEST BROKERAGES

APE AWARDS REALTORS' LAND INSTITUTE RLI MISSISSIPPI CHAPTER

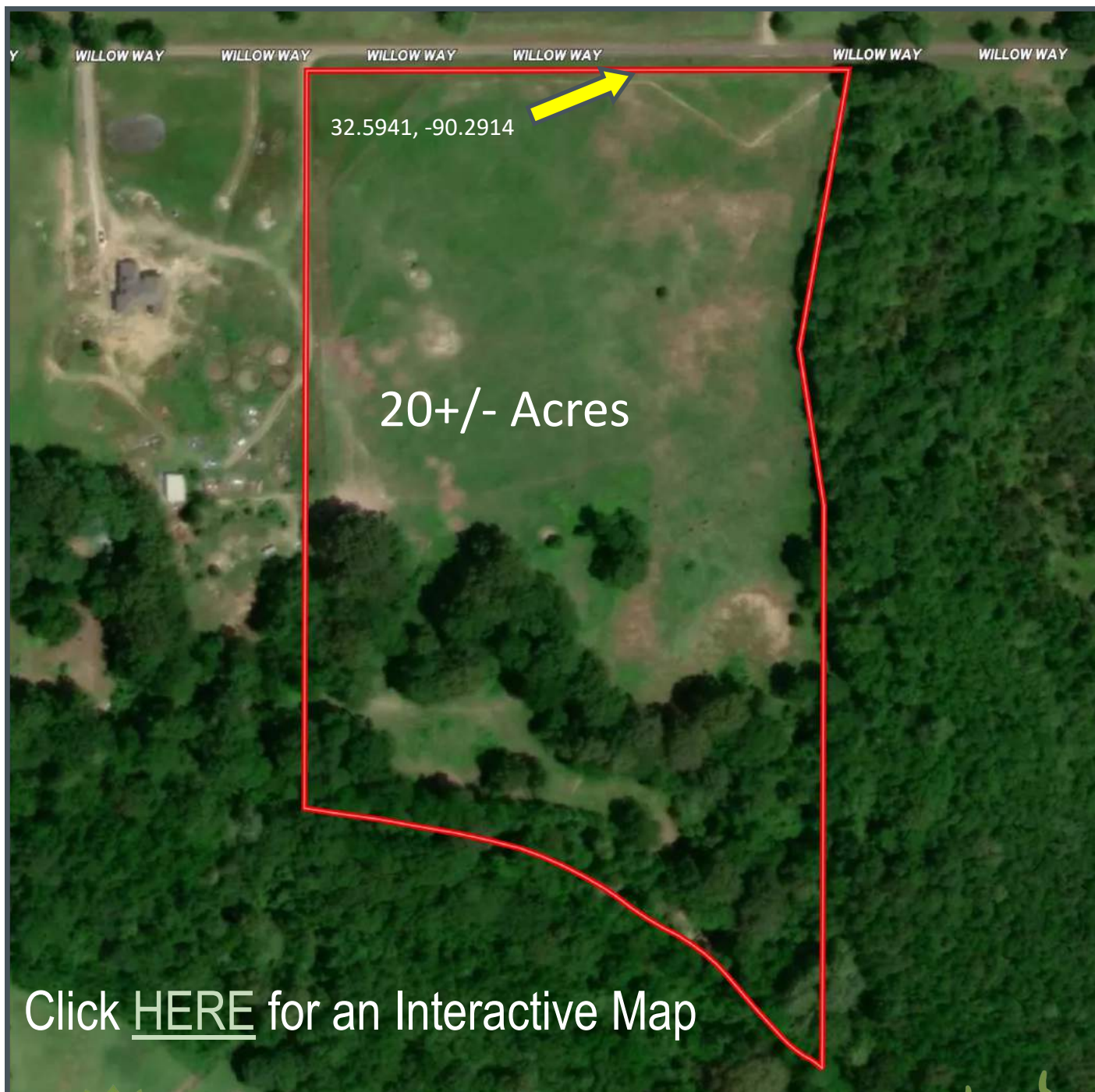
MICHAEL OSWALT, ASSOCIATE BROKER®
Michael@TomSmithLand.com
601.898.2772 office | 662.719.3967 cell
Licensed in MS, AR & MO

Tom Smith LAND AND HOMES
Expect More. Get More.

TomSmithLandandHomes.com

Information is believed to be accurate but not guaranteed.

AERIAL MAP



MORE THAN
15K
FOLLOWERS
ON FACEBOOK



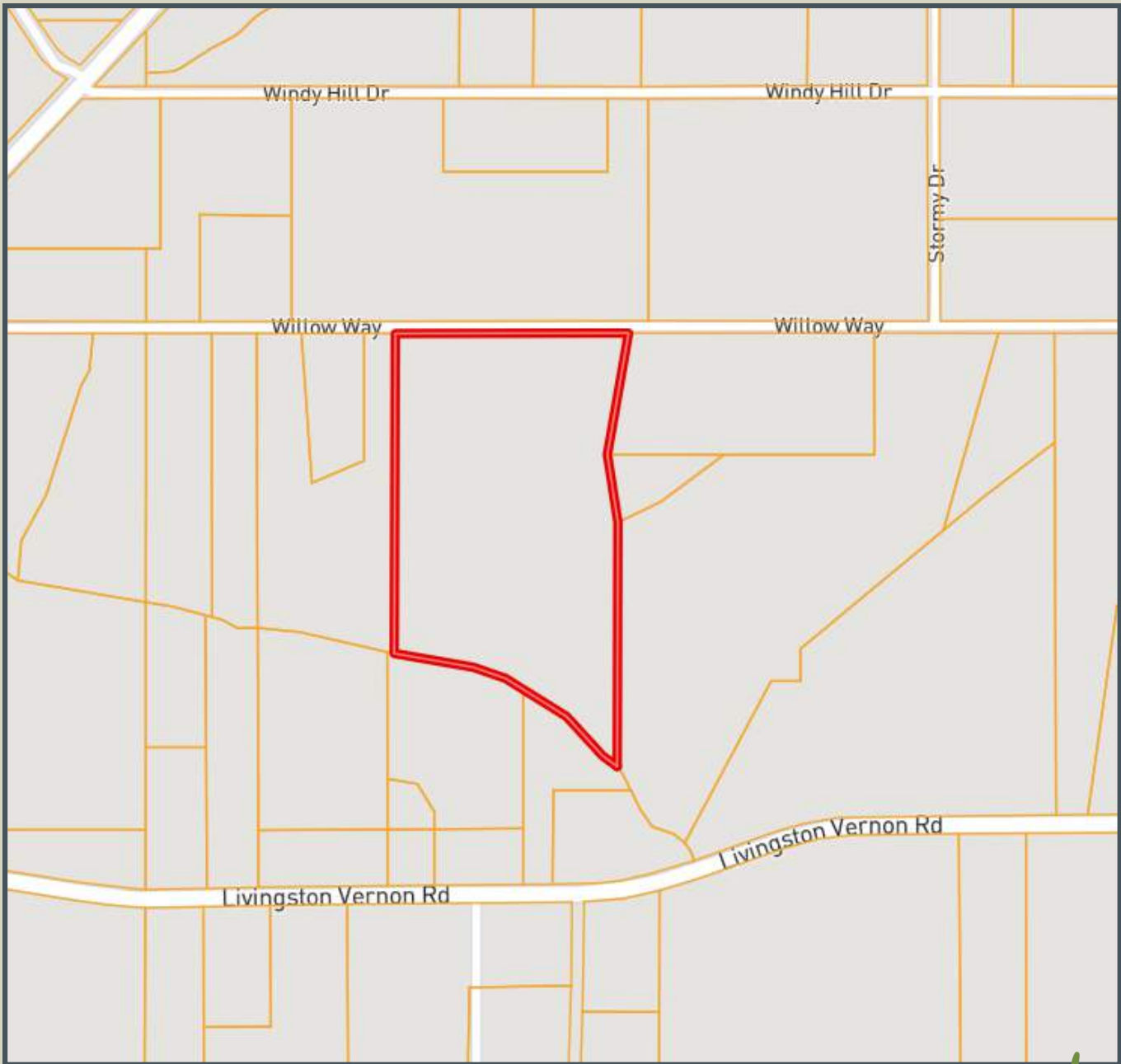
MICHAEL OSWALT, ASSOCIATE BROKER®
Michael@TomSmithLand.com
601.898.2772 office | 662.719.3967 cell
Licensed in MS, AR & MO



TomSmithLandandHomes.com

Information is believed to be accurate but not guaranteed.

OWNERSHIP MAP



MORE THAN
15K
FOLLOWERS
ON FACEBOOK

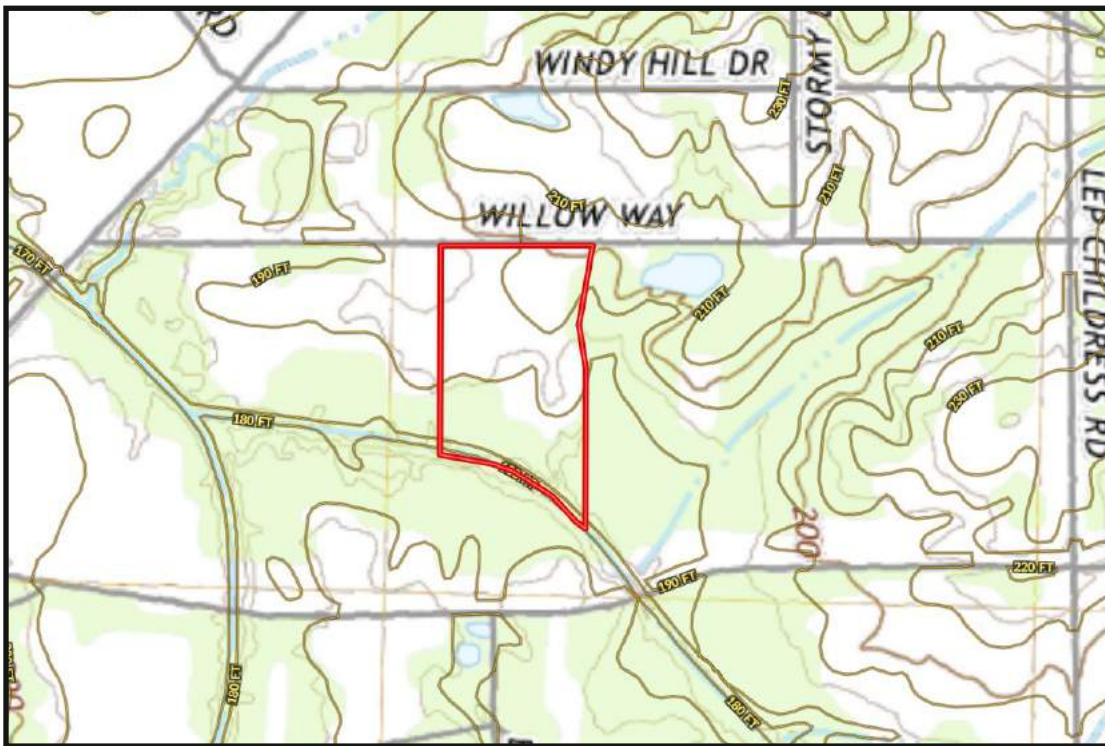


MICHAEL OSWALT, ASSOCIATE BROKER®
Michael@TomSmithLand.com
601.898.2772 office | 662.719.3967 cell
Licensed in MS, AR & MO



TomSmithLandandHomes.com

Information is believed to be accurate but not guaranteed.



TOPO MAP

SOIL MAP



SOIL CODE	SOIL DESCRIPTION	ACRES	%	CPI	NCCPI	CAP
Ar	Ariel silt loam	10.96	55.8	0	76	2w
GrB2	Grenada silt loam, 2 to 5 percent slopes, eroded	7.1	36.15	0	48	2e
LoC3	Loring silt loam, 5 to 8 percent slopes, severely eroded, central	1.29	6.57	0	46	4e
LoB2	Loring silt loam, 2 to 5 percent slopes, moderately eroded, central	0.29	1.48	0	55	3e
TOTALS		19.64(*)	100%	-	63.6	2.15

MORE THAN
15K
FOLLOWERS
ON FACEBOOK



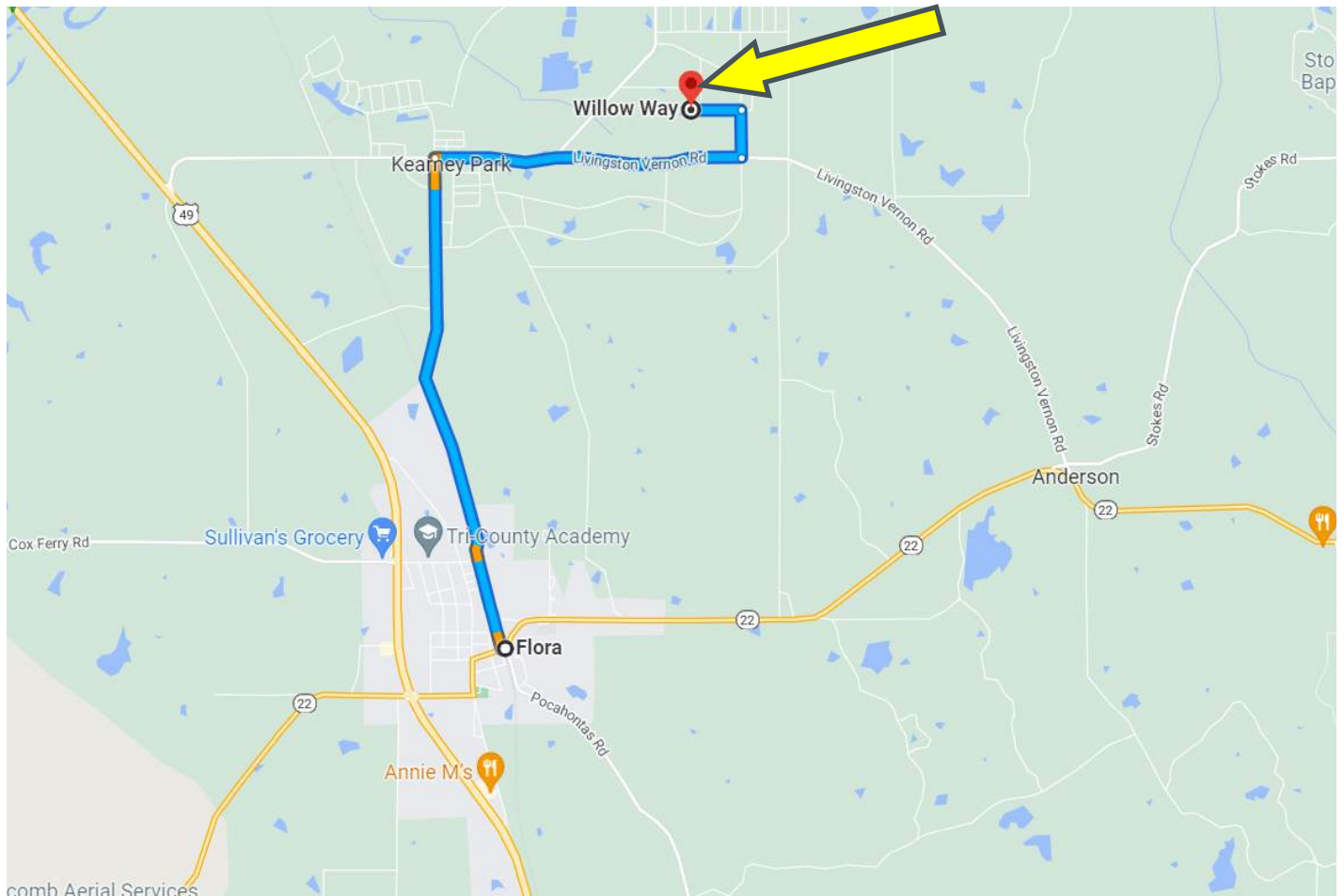
MICHAEL OSWALT, ASSOCIATE BROKER®
 Michael@TomSmithLand.com
 601.898.2772 office | 662.719.3967 cell
 Licensed in MS, AR & MO



TomSmithLandandHomes.com

Information is believed to be accurate but not guaranteed.

DIRECTIONAL MAP



Directions from Flora, MS: From the intersection of MS- 22E/Canton-Flora Road and Kearney Park Road travel north on Kearney Park Road for 3.3 miles. Turn right on Livingston Vernon Road and travel for 2.0 miles. Turn left onto Lep Childress Road and continue for 0.3 miles. Turn left at the 1st cross street onto Willow Way and travel for 0.3 miles. Property is located on the left.

Click [HERE](#) for Google Maps



MORE THAN
15K
FOLLOWERS
ON FACEBOOK

Call me today!

MICHAEL OSWALT, ASSOCIATE BROKER®

Michael@TomSmithLand.com
601.898.2772 office | 662.719.3967 cell

Licensed in MS, AR & MO



Expect More. Get More.

TomSmithLandandHomes.com

Information is believed to be accurate but not guaranteed.