

EXCELLENT HUNTING ON 28± ACRES IN NEWTON COUNTY, MS



\$75,000

28± Acres in Newton County, MS! This property has plenty of deer hunting from the established food plot areas in addition to thick bedding areas for deer. The property has plenty of open pasture ground and lightly wooded areas with mature hardwood timber. With plenty of road frontage on Naomi Rd and open fields, this property is easily accessed and traversed. The property also features established home/campsites with power and water available. The property is conveniently located just 30 minutes from Meridian, MS, and has quick access to I-20, putting the property an hour from Jackson, MS.

Directions from the Intersection of US-80E and MS-35S in Forest, MS: Travel east on US-80 E for 15.8 miles, turn right onto Lawrence Bethel Rd, travel 1 mile and turn left onto Pecan Rd, in 1.4 miles turn left onto Naomi Dr, the property will be on the left in .2 miles.



call me today!

PRESTON SMITH, MANAGING BROKER
Preston@TomSmithLand.com
601.990.5070 office | 601.209.7150 cell



TomSmithLandandHomes.com

Information is believed to be accurate but not guaranteed.



2011-2020
NATIONAL
BEST
BROKERAGES

REALTORS
LAND
INSTITUTE
RLI MISSISSIPPI CHAPTER

call me today!

PRESTON SMITH, MANAGING BROKER
Preston@TomSmithLand.com
601.990.5070 office | 601.209.7150 cell



TomSmithLandandHomes.com

Information is believed to be accurate but not guaranteed.



call me today!

PRESTON SMITH, MANAGING BROKER
Preston@TomSmithLand.com
601.990.5070 office | 601.209.7150 cell



TomSmithLandandHomes.com

Information is believed to be accurate but not guaranteed.

Aerial Map



call me today!

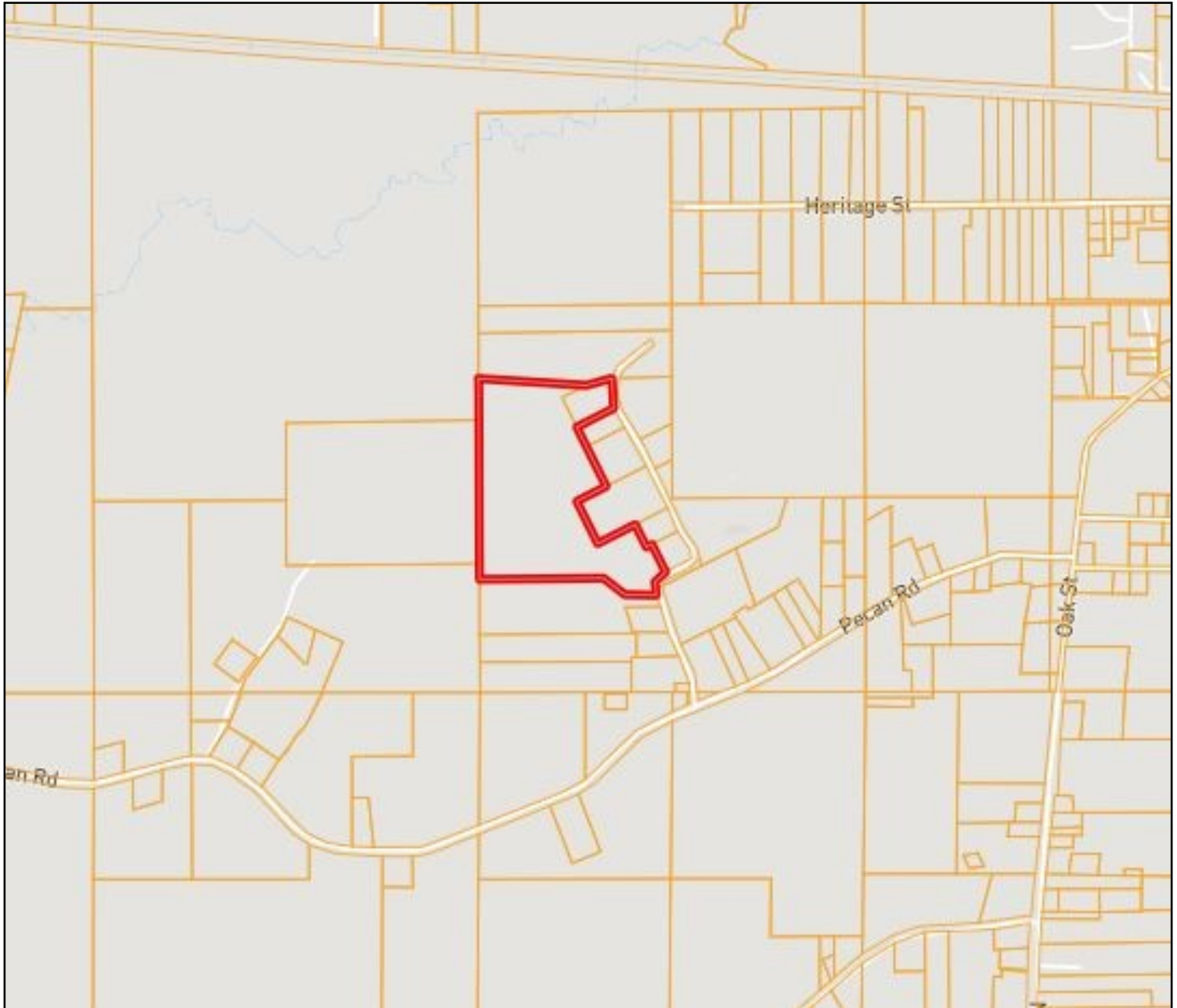
PRESTON SMITH, MANAGING BROKER
Preston@TomSmithLand.com
601.990.5070 office | 601.209.7150 cell



TomSmithLandandHomes.com

Information is believed to be accurate but not guaranteed.

Ownership Map



call me today!

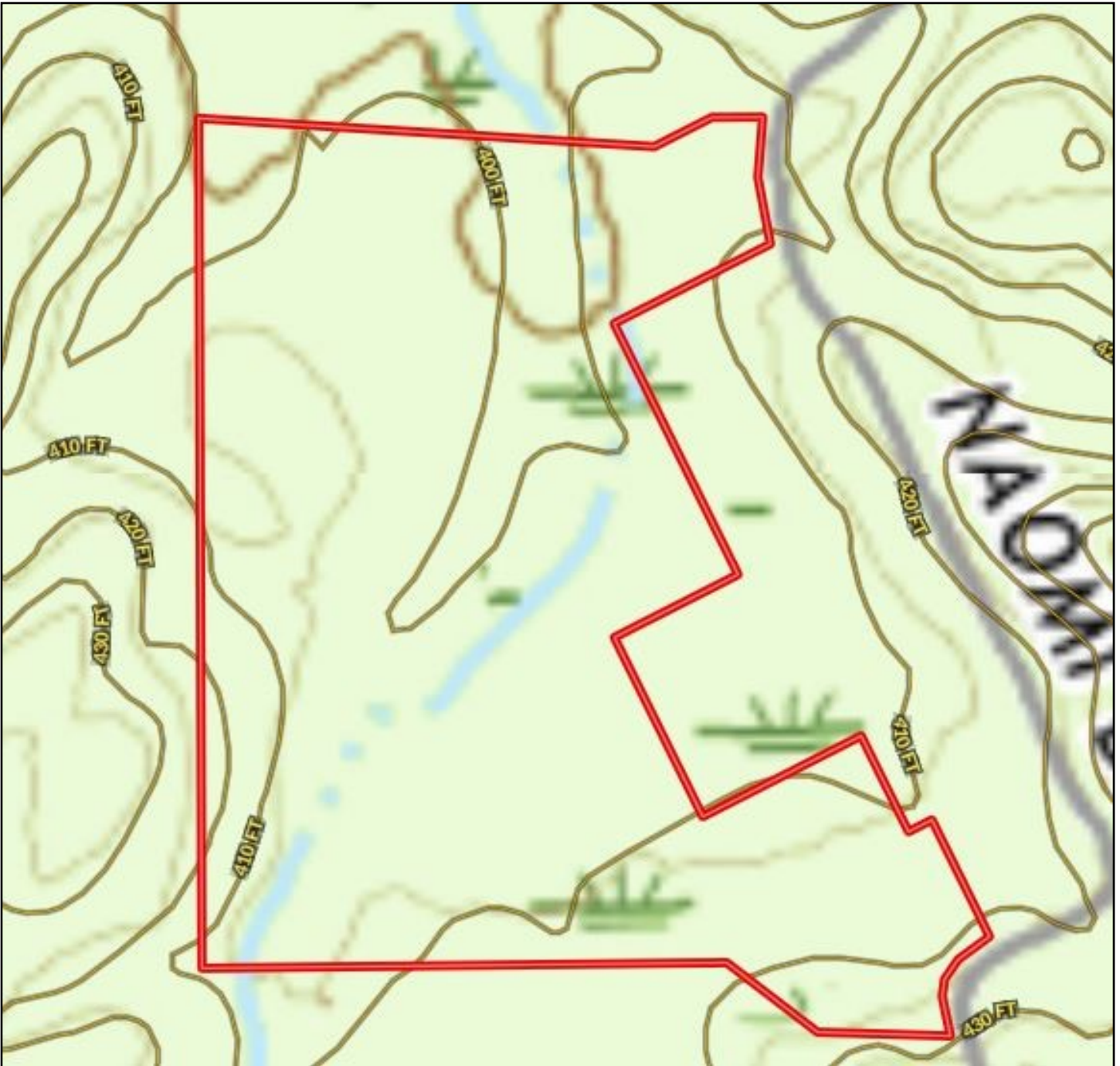
PRESTON SMITH, MANAGING BROKER
Preston@TomSmithLand.com
601.990.5070 office | 601.209.7150 cell



TomSmithLandandHomes.com

Information is believed to be accurate but not guaranteed.

Topography Map



call me today!

PRESTON SMITH, MANAGING BROKER
Preston@TomSmithLand.com
601.990.5070 office | 601.209.7150 cell



TomSmithLandandHomes.com

Information is believed to be accurate but not guaranteed.

Flood Map



call me today!

PRESTON SMITH, MANAGING BROKER
Preston@TomSmithLand.com
601.990.5070 office | 601.209.7150 cell



TomSmithLandandHomes.com

Information is believed to be accurate but not guaranteed.

Soil Map



call me today!

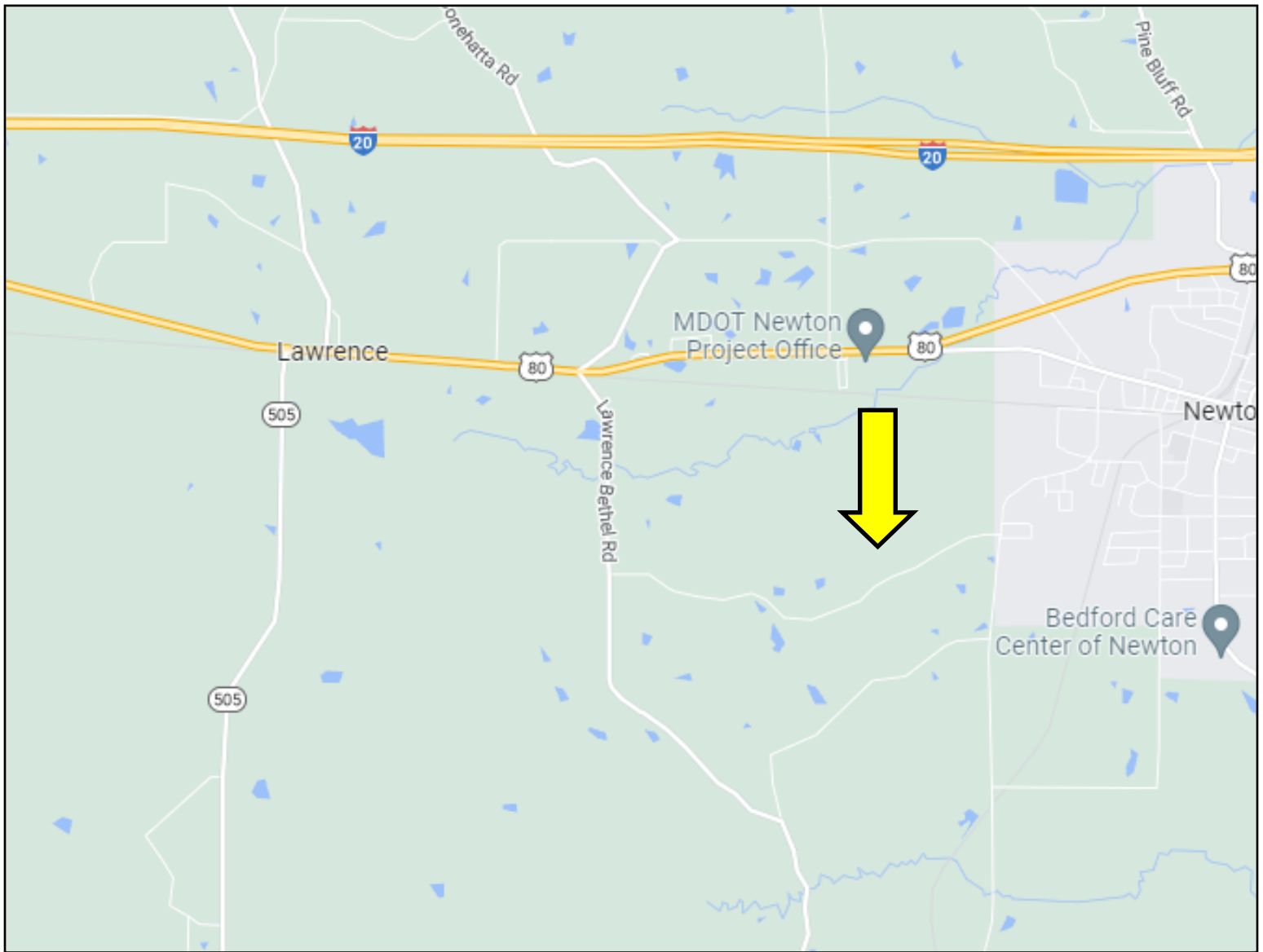
PRESTON SMITH, MANAGING BROKER
 Preston@TomSmithLand.com
 601.990.5070 office | 601.209.7150 cell



TomSmithLandandHomes.com

Information is believed to be accurate but not guaranteed.

Directional Map



Directions from the Intersection of US-80E and MS-35S in Forest, MS: Travel east on US-80 E for 15.8 miles, turn right onto Lawrence Bethel Rd, travel 1 mile and turn left onto Pecan Rd, in 1.4 miles turn left onto Naomi Dr, the property will be on the left in .2 miles.



call me today!

PRESTON SMITH, MANAGING BROKER
Preston@TomSmithLand.com
601.990.5070 office | 601.209.7150 cell



TomSmithLandandHomes.com

Information is believed to be accurate but not guaranteed.