

CHARMING HOME ON 2.30± ACRES IN LAUDERDALE COUNTY, MISSISSIPPI

384 Ponta Hills Road, Meridian, MS 39305



This Lauderdale County, MS property features a charming home in a great neighborhood, a fenced backyard, and a small workshop and office. The three bed and two bath, 2,102 square foot brick home is situated on a 2.30 +/- acre lot at the end of a long winding, paved drive. The home has a spacious kitchen with an open floor plan and high ceilings in the living room. A 300 square foot two-car garage is attached to the house, and an additional small workshop/office is located in the backyard, providing plenty of space for any of your hobbies. In addition, the property has a fantastic wooded landscape with lots of space and is located in Northeast Lauderdale School District, only minutes from the city of Meridian. This charming home could be the perfect place to raise a family with a bit of updating. Contact Brett Carney to schedule your private showing today!

Directions from I-20 and Highway 39 in Meridian, MS: Travel Highway 39 North for 9.7 miles. Take a right onto Ponta Hills Road. After 1.7 miles, the home will be on your right. 384 Ponta Hills Road, Meridian, MS



Call me today!

BRETT CARNEY, REALTOR®
Brett@TomSmithLand.com
662.268.6333 office | 601.710.9633 cell



TomSmithLandandHomes.com

Information is believed to be accurate but not guaranteed.



BRETT CARNEY, REALTOR®
Brett@TomSmithLand.com
662.268.6333 **office** | 601.710.9633 **cell**



TomSmithLandandHomes.com

Information is believed to be accurate but not guaranteed.



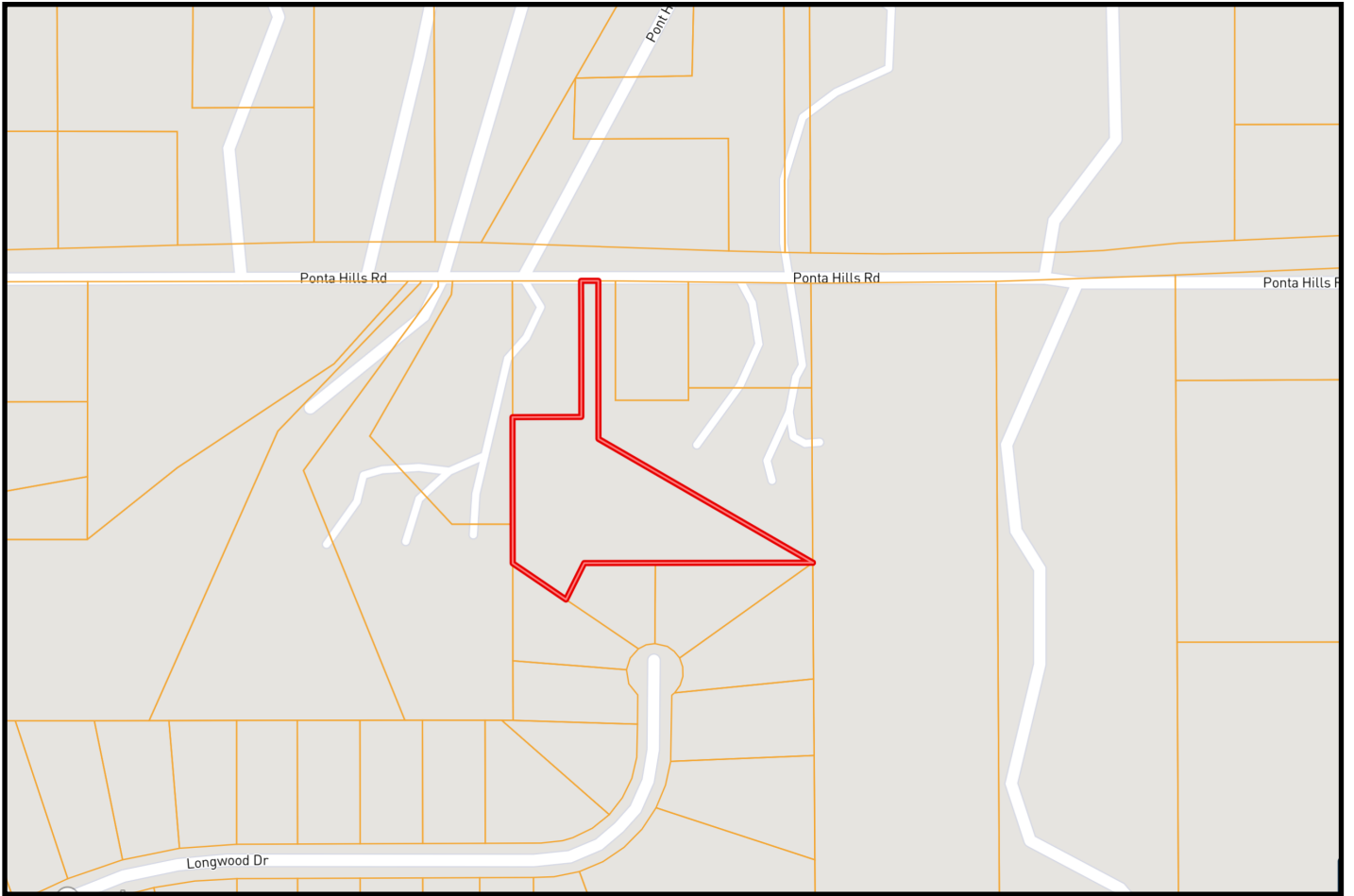
BRETT CARNEY, REALTOR®
Brett@TomSmithLand.com
662.268.6333 office | 601.710.9633 cell



TomSmithLandandHomes.com

Information is believed to be accurate but not guaranteed.

OWNERSHIP MAP



BRETT CARNEY, REALTOR®
Brett@TomSmithLand.com
662.268.6333 **office** | 601.710.9633 **cell**

TomSmithLandandHomes.com

Information is believed to be accurate but not guaranteed.

AERIAL MAP



[CLICK HERE FOR AN INTERACTIVE MAP](#)

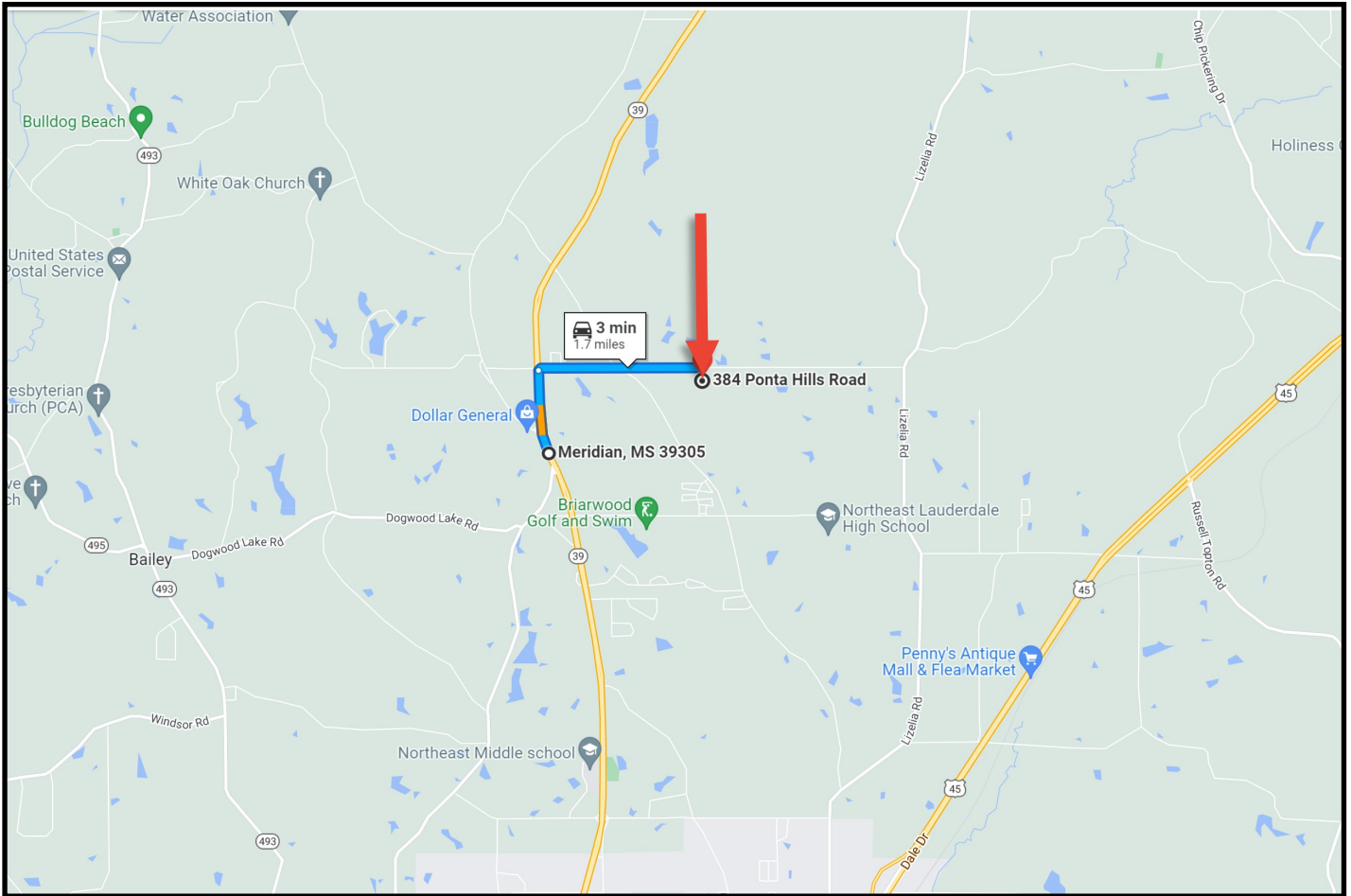


BRETT CARNEY, REALTOR®
Brett@TomSmithLand.com
662.268.6333 **office** | 601.710.9633 **cell**

TomSmithLandandHomes.com

Information is believed to be accurate but not guaranteed.

DIRECTIONAL MAP



Directions from I-20 and Highway 39 in Meridian, MS: Travel Highway 39 North for 9.7 miles. Take a right onto Ponta Hills Road. After 1.7 miles, The home will be on your right.
384 Ponta Hills Road, Meridian, MS 39305



Call me today!

BRETT CARNEY, REALTOR ©
Brett@TomSmithLand.com
662.268.6333 office | 601.710.9633 cell



TomSmithLandandHomes.com

Information is believed to be accurate but not guaranteed.