

GREAT HUNTING ON 38± WOODED ACRES IN LAWRENCE COUNTY, MS



38± Acres in Lawrence County, MS! This property has plenty of deer and turkey hunting from the established food plot areas. In addition the property features a creek, providing a plentiful water source for local wildlife. The property is mostly mature pine timber. With plenty of road frontage on Causey Rd, a gated entrance, and a good internal road system, this property is easily accessed and traversed. The property also features two small barns, with an established home/campsite with power and water available. The property is conveniently located just minutes from Monticello, MS, and is approximately 30 minutes from I-55, putting the property 2 hours from Baton Rouge, LA, and New Orleans, LA.

Directions from I-55 in Brookhaven, MS: Take Exit 38 heading east, travel 5.7 miles and turn right onto E Lincoln Rd SE, in 11.7 miles turn right onto Forest Grove Rd, in 2.9 miles turn right onto Carmel-Newhope Rd, the property will be on the left in .5 miles.



Call me today!

PRESTON SMITH, MANAGING BROKER
Preston@TomSmithLand.com
601.990.5070 office | 601.209.7150 cell



TomSmithLandandHomes.com

Information is believed to be accurate but not guaranteed.



Call me today!

PRESTON SMITH, MANAGING BROKER
Preston@TomSmithLand.com
601.990.5070 office | 601.209.7150 cell



TomSmithLandandHomes.com

Information is believed to be accurate but not guaranteed.



Call me today!

PRESTON SMITH, MANAGING BROKER
Preston@TomSmithLand.com
601.990.5070 office | 601.209.7150 cell



TomSmithLandandHomes.com

Information is believed to be accurate but not guaranteed.



2011-2020
BEST
 BROKERAGES

REALTORS
LAND
INSTITUTE
 RLI MISSISSIPPI CHAPTER

Call me today!

PRESTON SMITH, MANAGING BROKER
 Preston@TomSmithLand.com
 601.990.5070 office | 601.209.7150 cell

**Tom
 Smith
 LAND AND
 HOMES**
 Expect More. Get More.

TomSmithLandandHomes.com

Information is believed to be accurate but not guaranteed.

Aerial Map



Call me today!



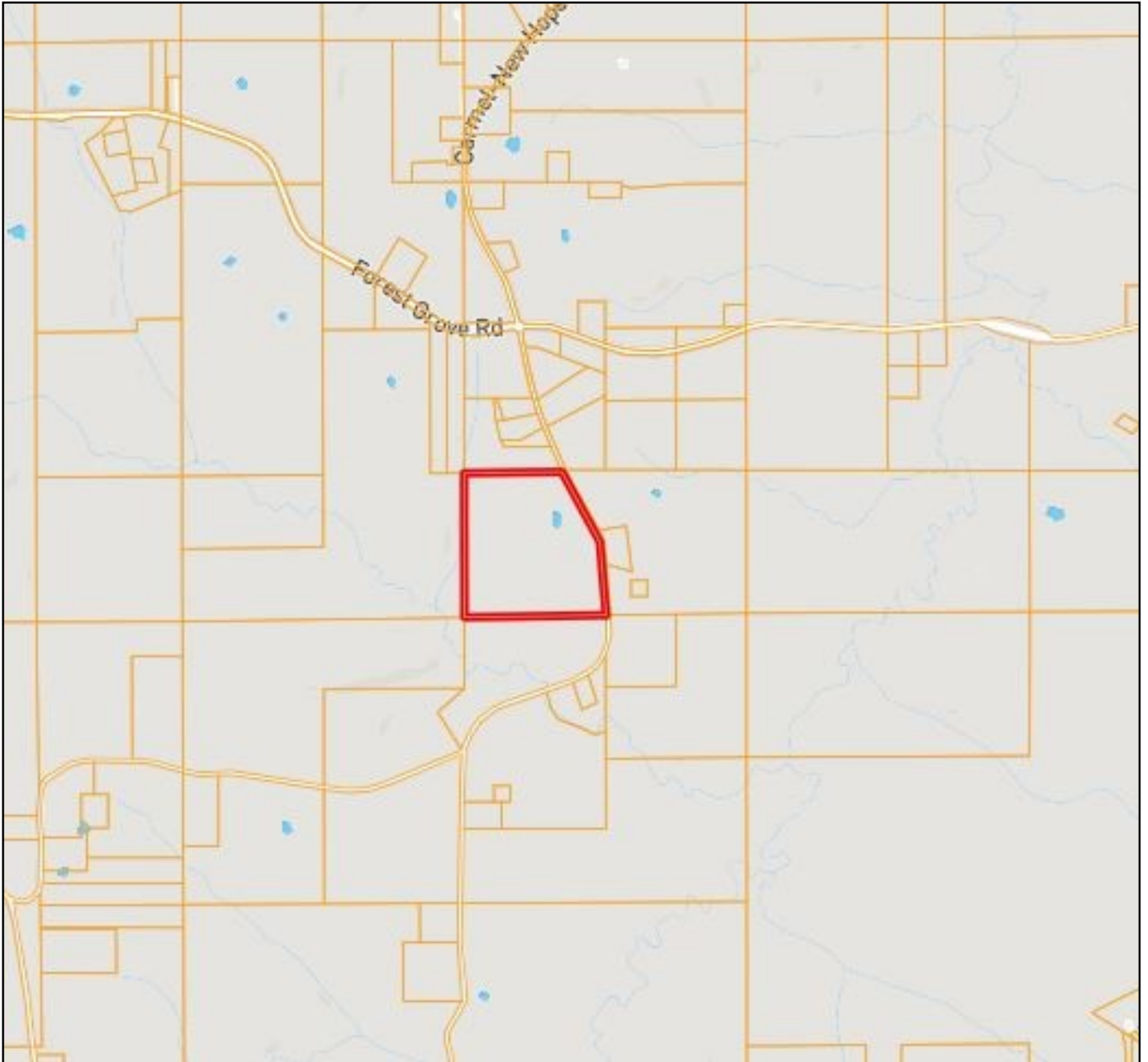
PRESTON SMITH, MANAGING BROKER
Preston@TomSmithLand.com
601.990.5070 office | 601.209.7150 cell



TomSmithLandandHomes.com

Information is believed to be accurate but not guaranteed.

Ownership Map



Call me today!

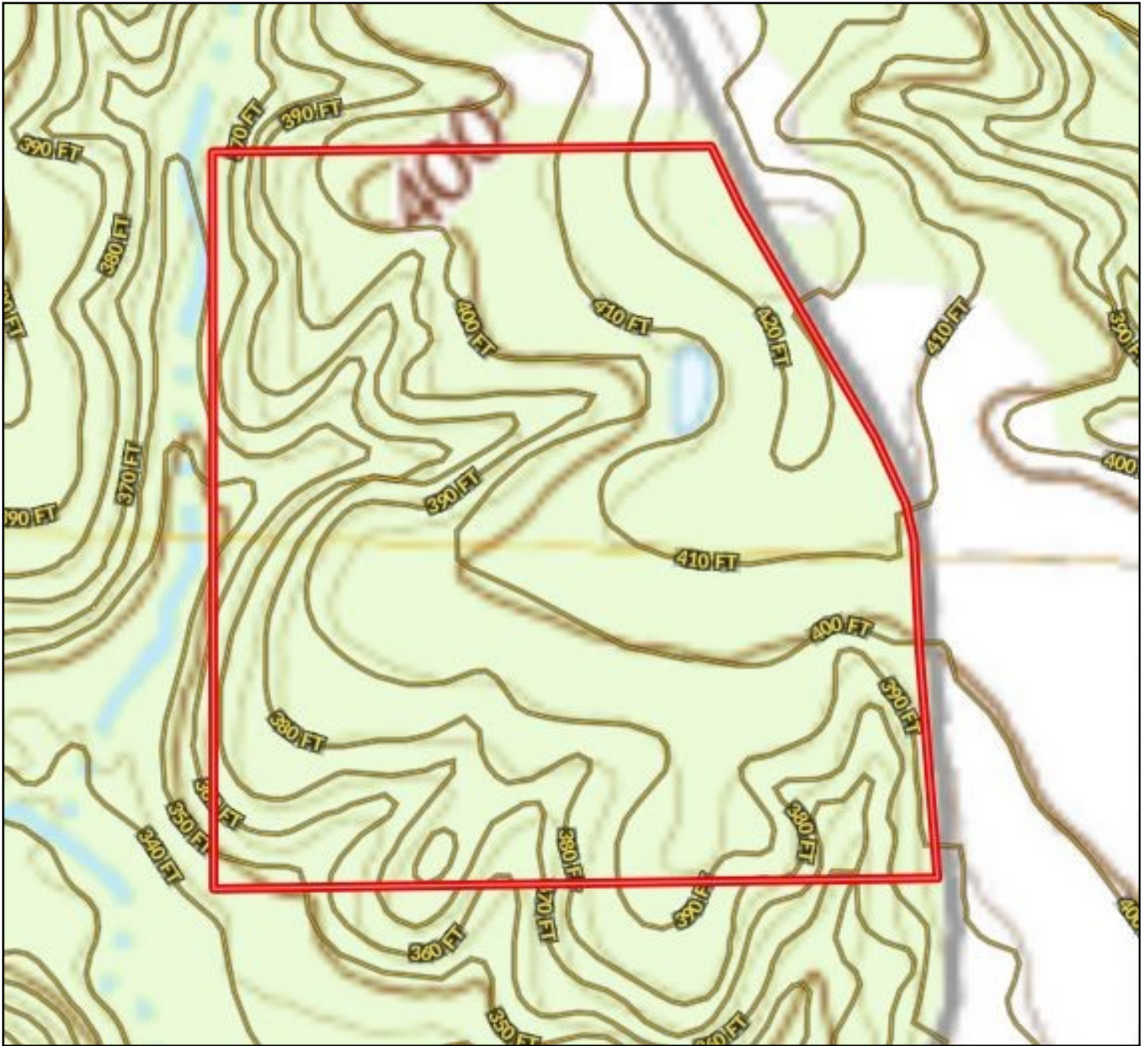
PRESTON SMITH, MANAGING BROKER
Preston@TomSmithLand.com
601.990.5070 office | 601.209.7150 cell



TomSmithLandandHomes.com

Information is believed to be accurate but not guaranteed.

Topography Map



Call me today!



PRESTON SMITH, MANAGING BROKER

Preston@TomSmithLand.com

601.990.5070 office | 601.209.7150 cell

Expect More. Get More.



TomSmithLandandHomes.com

Information is believed to be accurate but not guaranteed.

Flood Map



Call me today!

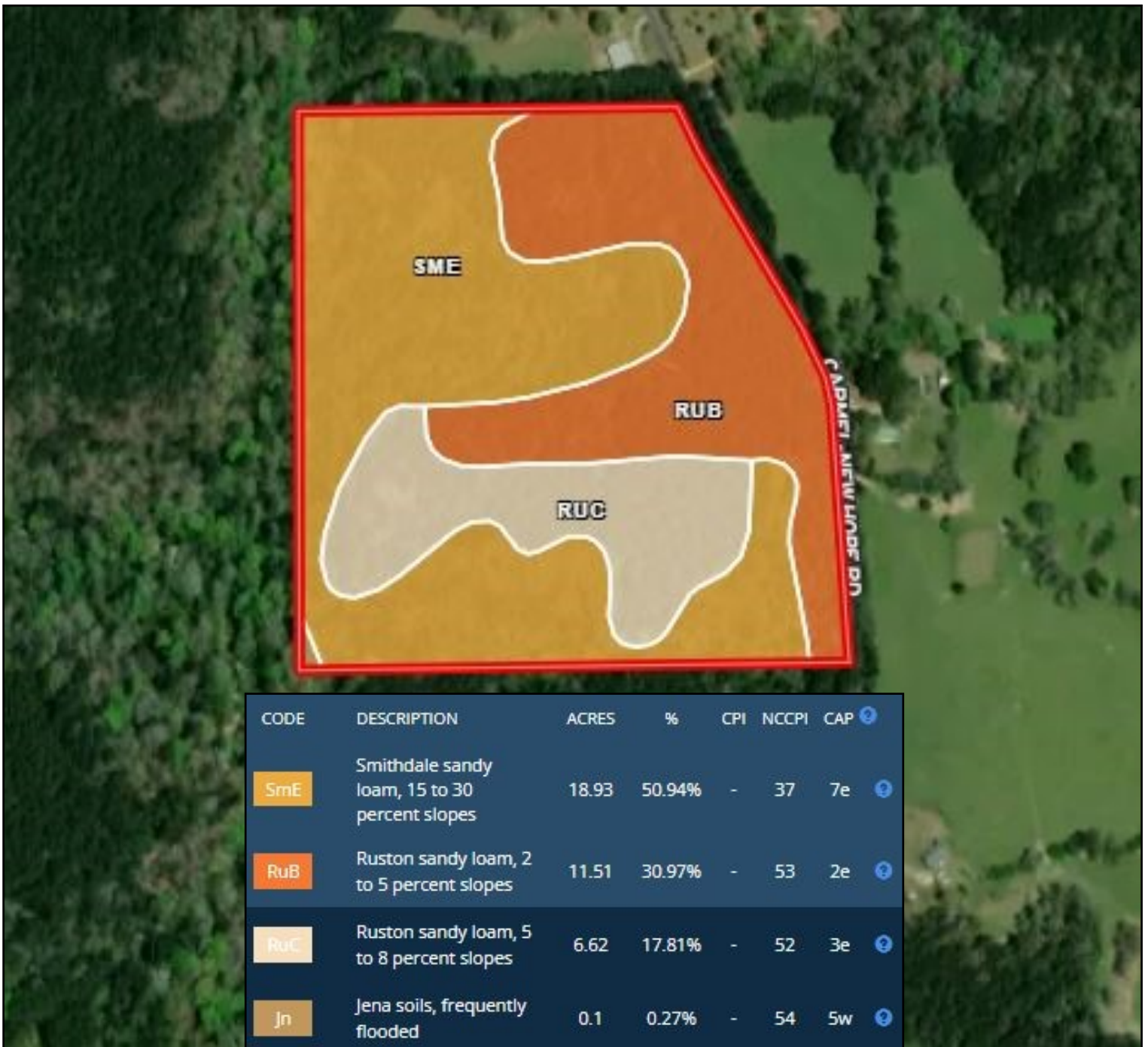
PRESTON SMITH, MANAGING BROKER
Preston@TomSmithLand.com
601.990.5070 office | 601.209.7150 cell



TomSmithLandandHomes.com

Information is believed to be accurate but not guaranteed.

Soil Map



Call me today!

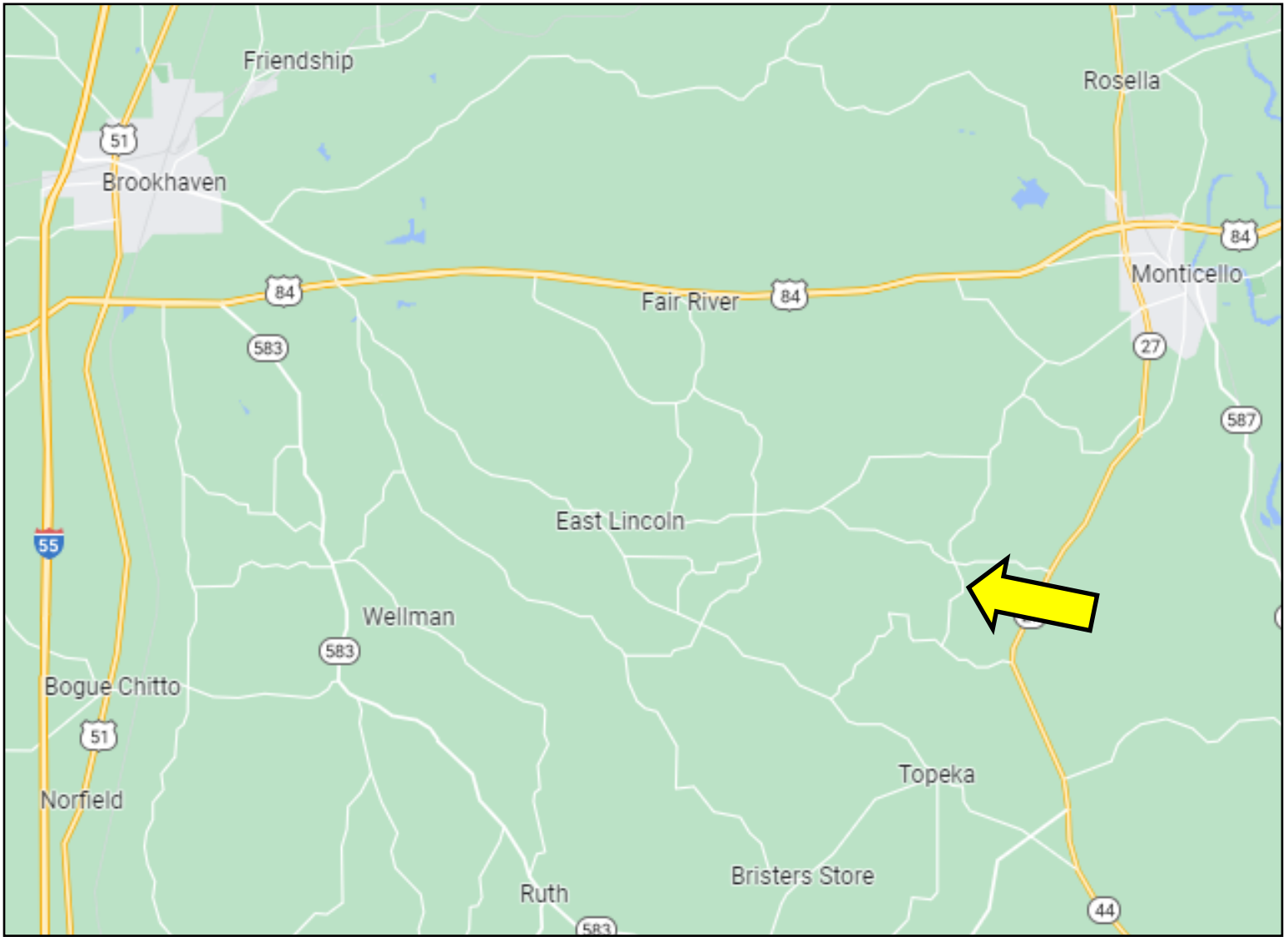
PRESTON SMITH, MANAGING BROKER
 Preston@TomSmithLand.com
 601.990.5070 office | 601.209.7150 cell



TomSmithLandandHomes.com

Information is believed to be accurate but not guaranteed.

Directional Map



Directions from I-55 in Brookhaven, MS: Take Exit 38 heading east, travel 5.7 miles and turn right onto E Lincoln Rd SE, in 11.7 miles turn right onto Forest Grove Rd, in 2.9 miles turn right onto Carmel-Newhope Rd, the property will be on the left in .5 miles.



Call me today!

PRESTON SMITH, MANAGING BROKER
Preston@TomSmithLand.com
601.990.5070 office | 601.209.7150 cell



TomSmithLandandHomes.com

Information is believed to be accurate but not guaranteed.