



0.53+/- Acre Home Site Lincoln County, MS



\$22,000

Check out these perfectly shaded, spacious lots in Lincoln County, MS that are waiting for you to build your dream home. Do not miss this rare chance to grab these vacant lots within the city limits of Brookhaven. This property has utilities located at the road. The property is made up of two lots being sold as one and together they are 0.53+/- acre. Located in Brookhaven School District on White Oak Drive, minutes away from downtown, Brookhaven schools, and recreational parks. Call Nicole to schedule a showing today!!

Directions from I-55 North exit 42 in Brookhaven, MS. Go right off the exit to the first road on the left, Industrial Park Road, and go to the second red light. Turn right at the light and White Oak Drive will be the third road on the right. You will see the sign on your left when turning down White Oak Drive.



LandReport
2010-2021
AMERICA'S
BEST
BROKERAGES

Call me today!

NICOLE NEWELL, REALTOR®
Nicole@TomSmithHomes.com
601.990.5070 office | 601.754.3766 cell



Expect More. Get More.

TomSmithLandandHomes.com

Information is believed to be accurate but not guaranteed.



Aerial Map



2010-2021
AMERICA'S
BEST
BROKERAGES

Call me today!

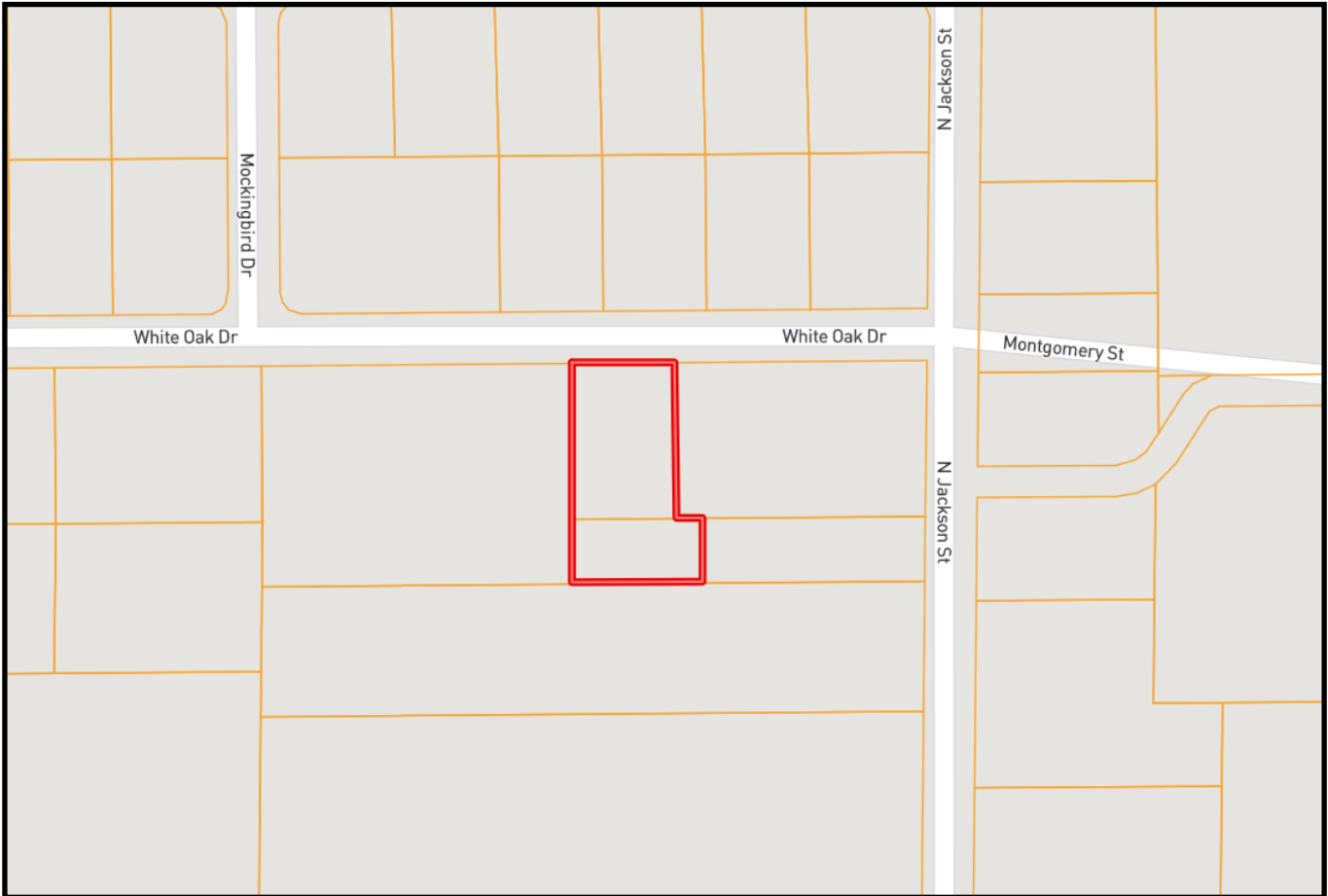
NICOLE NEWELL, REALTOR®
Nicole@TomSmithHomes.com
601.990.5070 office | 601.754.3766 cell



Expect More. Get More.

TomSmithLandandHomes.com

Information is believed to be accurate but not guaranteed.



Ownership Map



Call me today!

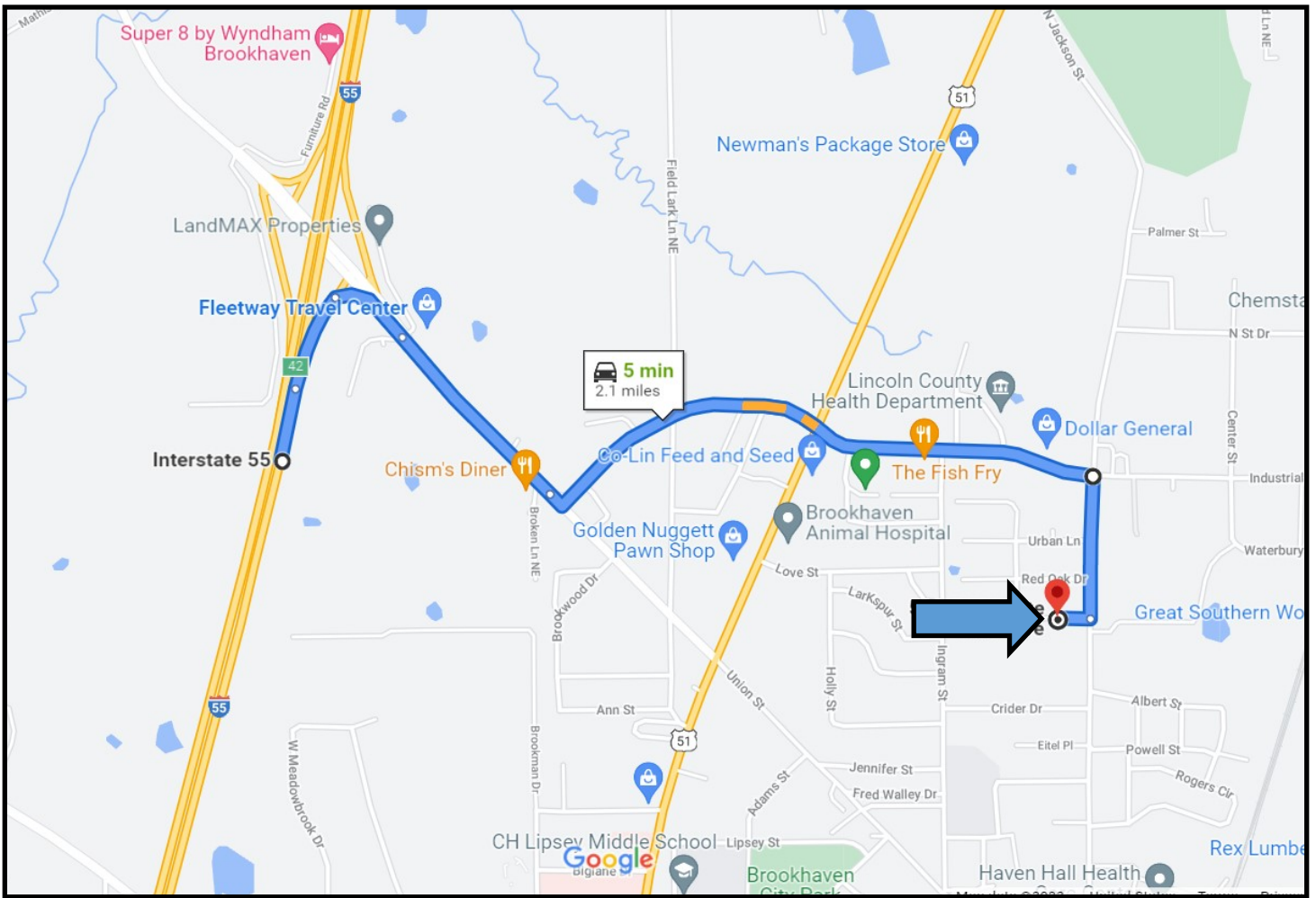
NICOLE NEWELL, REALTOR®
Nicole@TomSmithHomes.com
601.990.5070 office | 601.754.3766 cell



Expect More. Get More.

TomSmithLandandHomes.com

Information is believed to be accurate but not guaranteed.



Directional Map

Directions from I-55 North exit 42 in Brookhaven, MS. Go right off the exit to the first road on the left, Industrial Park Road, and go to the second red light. Turn right at the light and White Oak Drive will be the third road on the right. You will see the sign on your left when turning down White Oak Drive.



Call me today!

NICOLE NEWELL, REALTOR®
 Nicole@TomSmithHomes.com
 601.990.5070 office | 601.754.3766 cell



TomSmithLandandHomes.com

Information is believed to be accurate but not guaranteed.