



Desired City Lot on 0.53+/- Acre Lincoln County, MS



\$16,000

These two perfectly shaded, spacious lots in Lincoln County, MS, are waiting for your dream home to be built. This property is in the city limits of Brookhaven and has utilities ready for you at the road. There is plenty of room to throw the ball for the dog or build a playground or a shop. This desired lot is situated on 0.53+/- acre and minutes away from downtown, Brookhaven schools, and recreational parks. Call Nicole to schedule a showing today!!

Directions from I-55 North exit 42 in Brookhaven, MS. Go right off the exit to the first road on the left, Industrial Park Road, and go to the second red light. Turn right at the light and White Oak Drive will be the third road on the right. You will see the sign on your left when turning down White Oak Drive.



call me today!

NICOLE NEWELL, REALTOR®
Nicole@TomSmithHomes.com
601.990.5070 office | 601.754.3766 cell



TomSmithLandandHomes.com

Information is believed to be accurate but not guaranteed.



Aerial Map



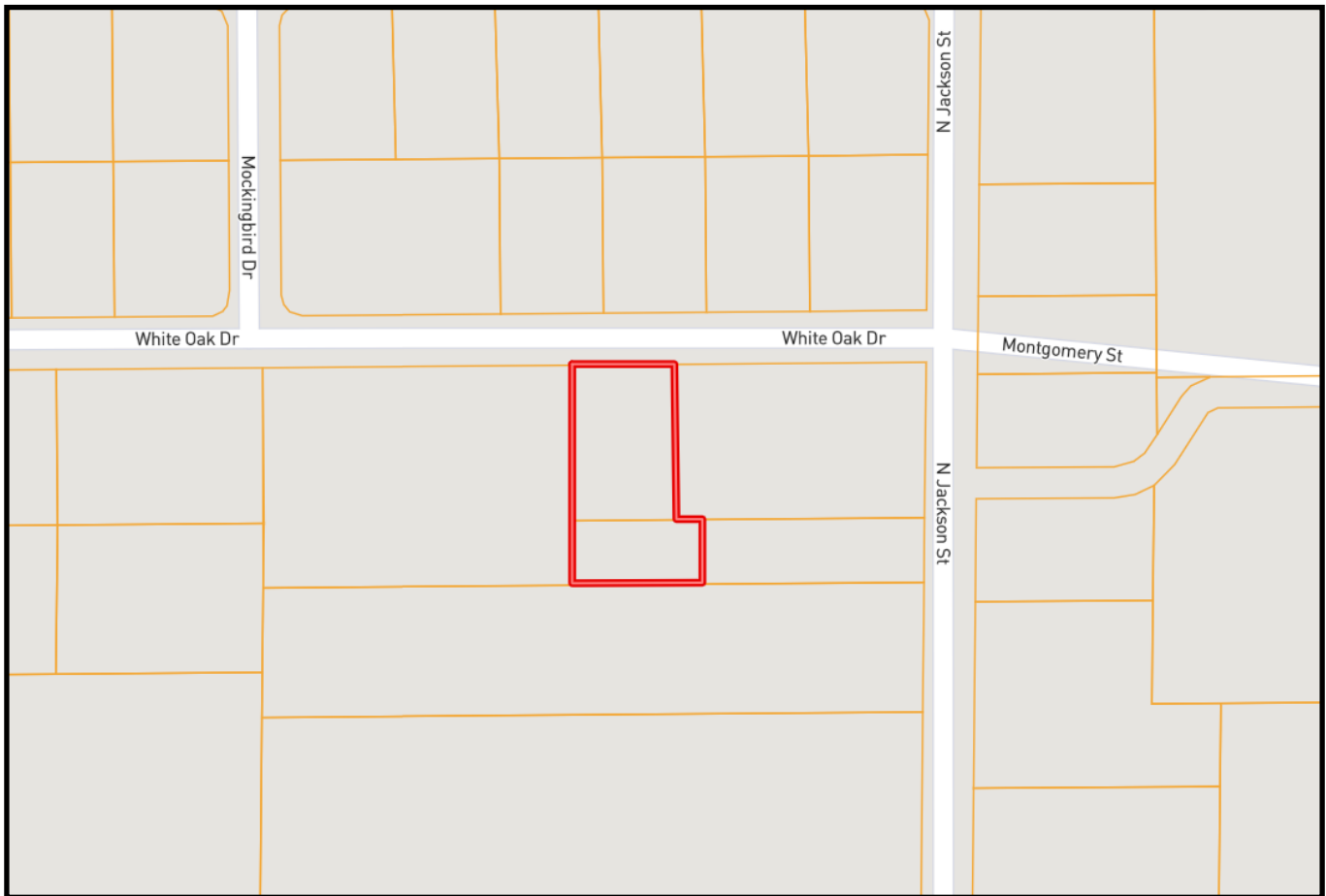
Call me today!

NICOLE NEWELL, REALTOR®
Nicole@TomSmithHomes.com
601.990.5070 office | 601.754.3766 cell



TomSmithLandandHomes.com

Information is believed to be accurate but not guaranteed.



Ownership Map



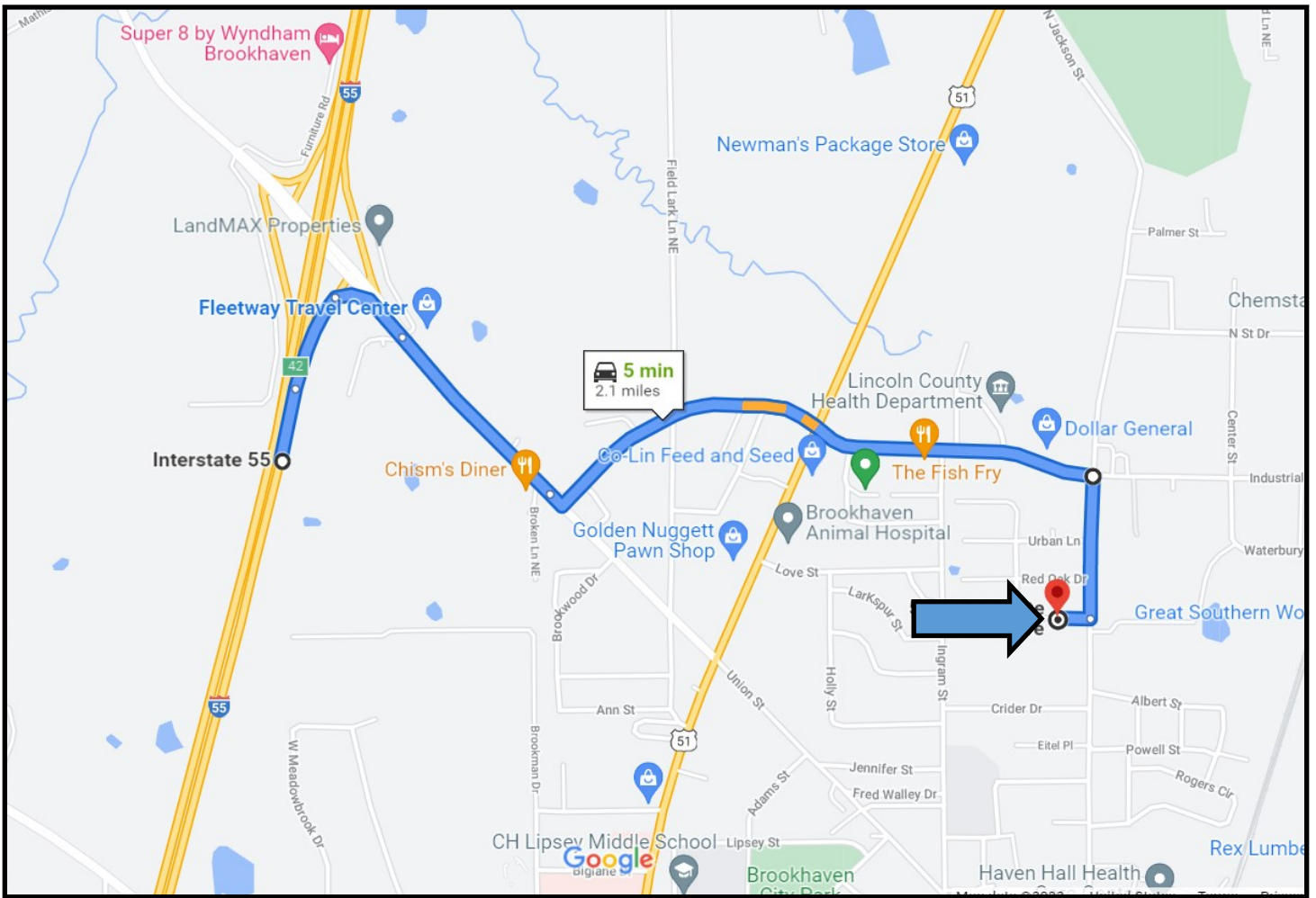
call me today!

NICOLE NEWELL, REALTOR®
 Nicole@TomSmithHomes.com
 601.990.5070 office | 601.754.3766 cell



TomSmithLandandHomes.com

Information is believed to be accurate but not guaranteed.



Directional Map

Directions from I-55 North exit 42 in Brookhaven, MS. Go right off the exit to the first road on the left, Industrial Park Road, and go to the second red light. Turn right at the light and White Oak Drive will be the third road on the right. You will see the sign on your left when turning down White Oak Drive.



call me today!

NICOLE NEWELL, REALTOR®
 Nicole@TomSmithHomes.com
 601.990.5070 office | 601.754.3766 cell



TomSmithLandandHomes.com

Information is believed to be accurate but not guaranteed.