



Secluded Home on 2.5+/- Acres

Pike County, MS



\$189,000

1093 Morgantown Road McComb, MS 39648

Come take a look at this three bedroom, three bathroom home on 2.5+/- acres in Pike County, MS! Just under 2,100+/- square feet with an open concept kitchen/living/dining, which is a perfect space to comfortably entertain with access to a full bath for guests. The bedrooms are just as spacious! You will find a bonus room off the laundry with access from the carport lined with shelving providing extra storage.

This home sits back off the road allowing for seclusion and a country feel. Speaking of a country feel, bring on the April showers because this home has a metal roof! A few recent updates include a new front porch, fresh paint and a new HVAC installed. The 1+/- acre fenced in pasture area in the back, and the barn and shed, provide the perfect start for a mini farm. A garden would make a good addition to the spacious yard, among other things. This property is located in North Pike School District, convenient to all the amenities of McComb. Call Sabrina to schedule your private viewing today! Preapproval or proof of funds is required to schedule an appointment.

Directions from E Presley Blvd toward White Blvd in McComb, MS: Turn left onto McComb Holmesville Road. Travel 0.4 miles. Turn left onto Morgantown Road. Travel 0.5 miles and the home will be on the left. Address: 1093 Morgantown Road McComb, MS 39648



LandReport
2010-2021
AMERICA'S
BEST
BROKERAGES

Call me today!

SABRINA WOLFF, REALTOR®
Sabrina@TomSmithHomes.com
601.990.5070 office | 601.754.3763 cell



Expect More. Get More.

TomSmithLandandHomes.com

Information is believed to be accurate but not guaranteed.



LandReport
2010-2021
AMERICA'S
BEST
BROKERAGES

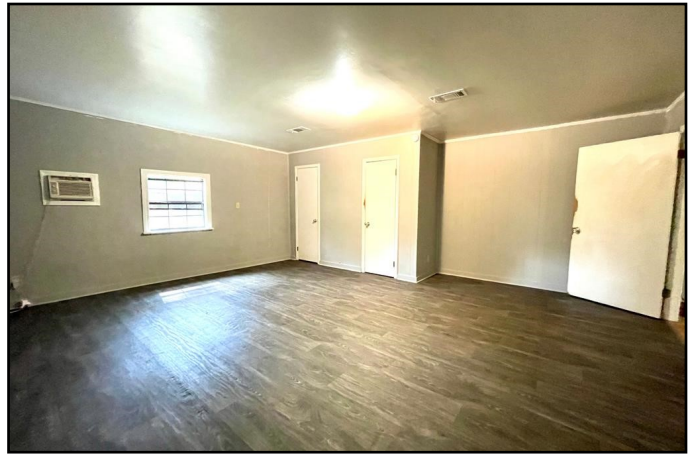
Call me today!

SABRINA WOLFF, REALTOR®
Sabrina@TomSmithHomes.com
601.990.5070 office | 601.754.3763 cell



TomSmithLandandHomes.com

Information is believed to be accurate but not guaranteed.



LandReport
2010-2021
AMERICA'S
BEST
BROKERAGES

Call me today!

SABRINA WOLFE, REALTOR®
Sabrina@TomSmithHomes.com
601.990.5070 office | 601.754.3763 cell



TomSmithLandandHomes.com

Information is believed to be accurate but not guaranteed.



Aerial Map



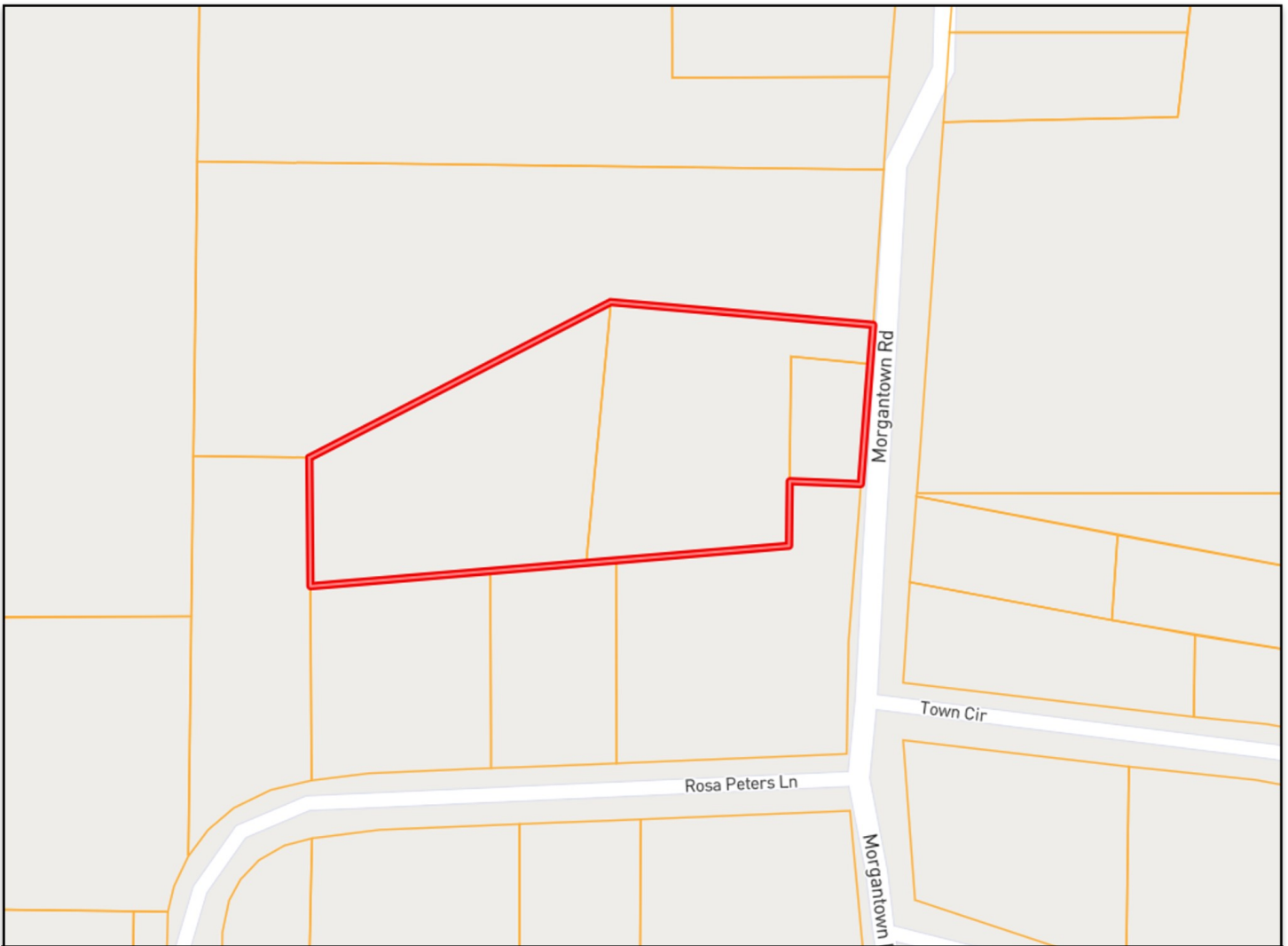
Call me today!

SABRINA WOLFF, REALTOR®
Sabrina@TomSmithHomes.com
601.990.5070 office | 601.754.3763 cell



TomSmithLandandHomes.com

Information is believed to be accurate but not guaranteed.



Ownership Map



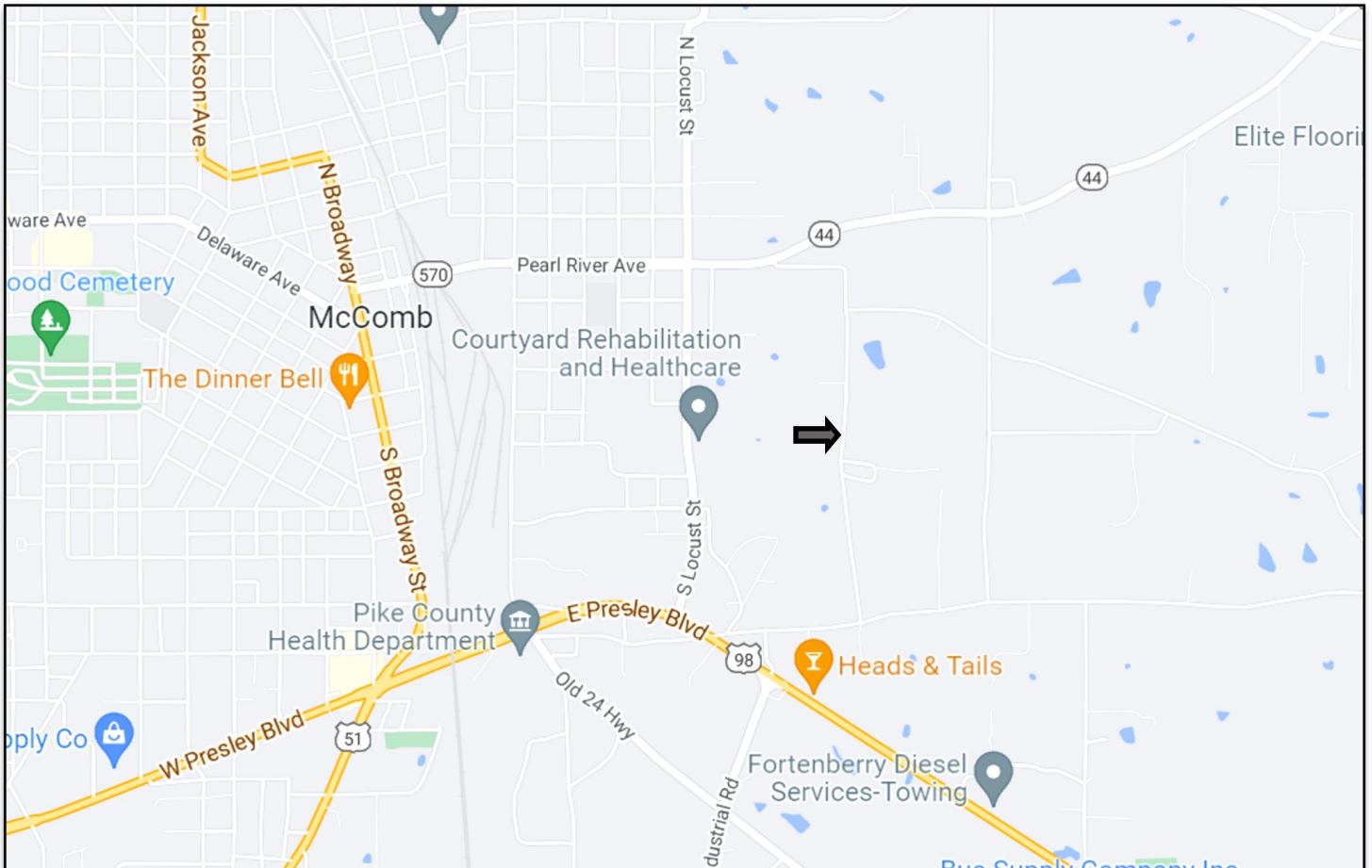
call me today!

SABRINA WOLFF, REALTOR®
Sabrina@TomSmithHomes.com
601.990.5070 office | 601.754.3763 cell



TomSmithLandandHomes.com

Information is believed to be accurate but not guaranteed.



Directional Map

Directions from E Presley Blvd toward White Blvd in McComb, MS: Turn left onto MCombs Holmesville Road. Travel 0.4 miles. Turn left onto Morgantown Road. Travel 0.5 miles and the home will be on the left. Address: 1093 Morgantown Road McComb, MS 39648



call me today!

SABRINA WOLFF, REALTOR®
 Sabrina@TomSmithHomes.com
 601.990.5070 office | 601.754.3763 cell



Expect More. Get More.

TomSmithLandandHomes.com

Information is believed to be accurate but not guaranteed.