

# Multipurpose Lot

## 0.4± Acres in Harrison County, MS



**\$575,000**

**9435 Fournier Avenue, D'Iberville, MS 39540**

**Check out this versatile waterfront lot situated in Harrison County, Mississippi. This approximately 0.4± acre parcel features stunning water views, refreshing Gulf breezes, majestic mature live oak trees, and convenient road frontage on Fournier Avenue in D'Iberville. The potential for this property knows no bounds! It holds casino district zoning but can also be an ideal location to construct your dream residence. Additionally, there is additional land available for future development projects. Contact David today to arrange a viewing!**



**DAVID  
BELDEN**  
REALTOR®

Office: 601.898.2772

Cell: 601.415.3883

DBelden@TomSmithLand.com



**A Real Estate Expert You Can Trust**

TomSmithLandandHomes.com

Information is believed to be accurate but not guaranteed.







**DAVID BELDEN**

REALTOR®

Office: 601.898.2772

Cell: 601.415.3883

DBelden@TomSmithLand.com



**A Real Estate Expert You Can Trust**

TomSmithLandandHomes.com

Information is believed to be accurate but not guaranteed.





# Aerial Map



[Click Here for an Interactive Map Link](#)

**DAVID BELDEN**

REALTOR®

Office: 601.898.2772

Cell: 601.415.3883

DBelden@TomSmithLand.com



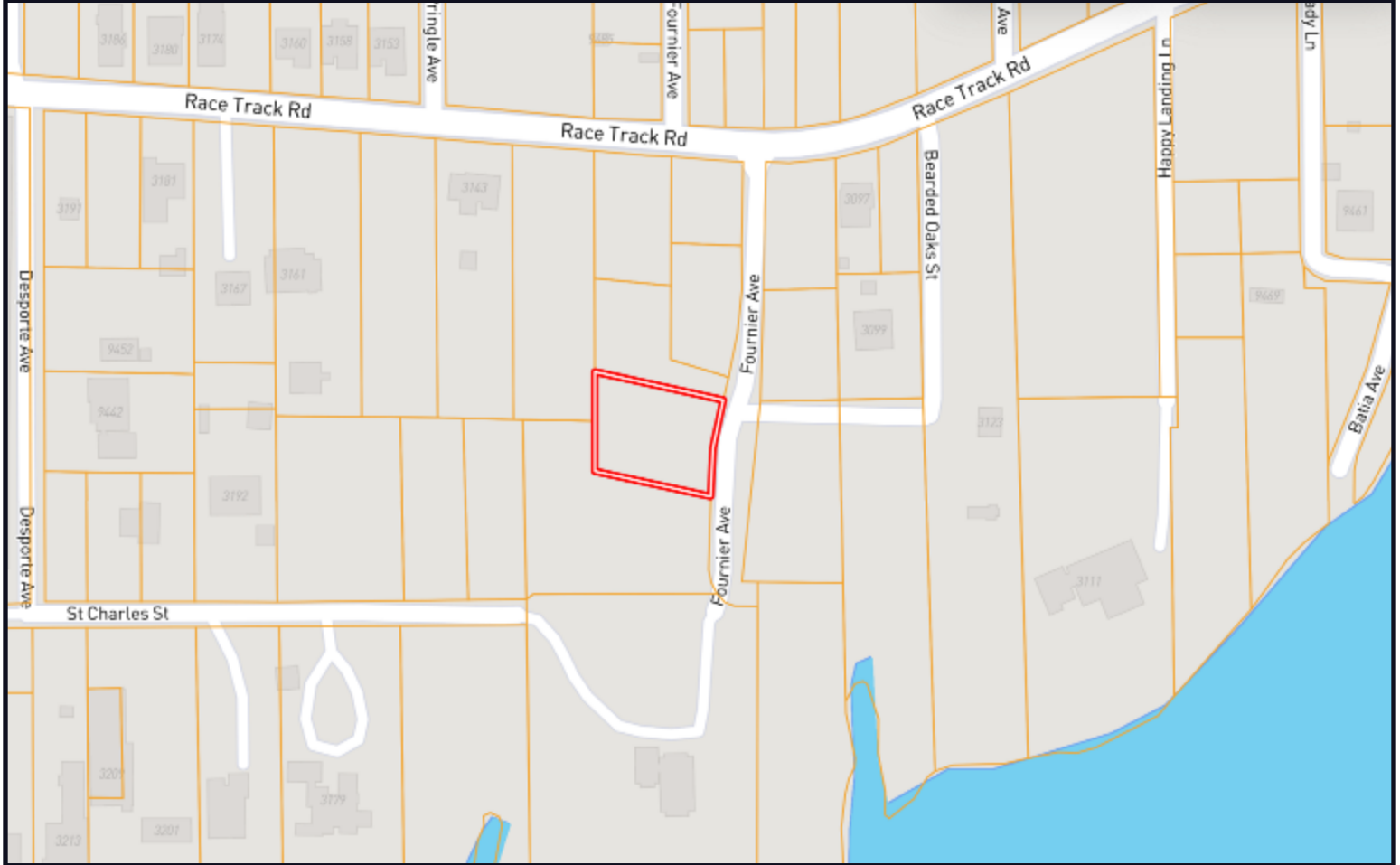
**A Real Estate Expert You Can Trust**

TomSmithLandandHomes.com

Information is believed to be accurate but not guaranteed.



# Ownership Map



**DAVID BELDEN**

REALTOR®

Office: 601.898.2772

Cell: 601.415.3883

[DBelden@TomSmithLand.com](mailto:DBelden@TomSmithLand.com)



**A Real Estate Expert You Can Trust**

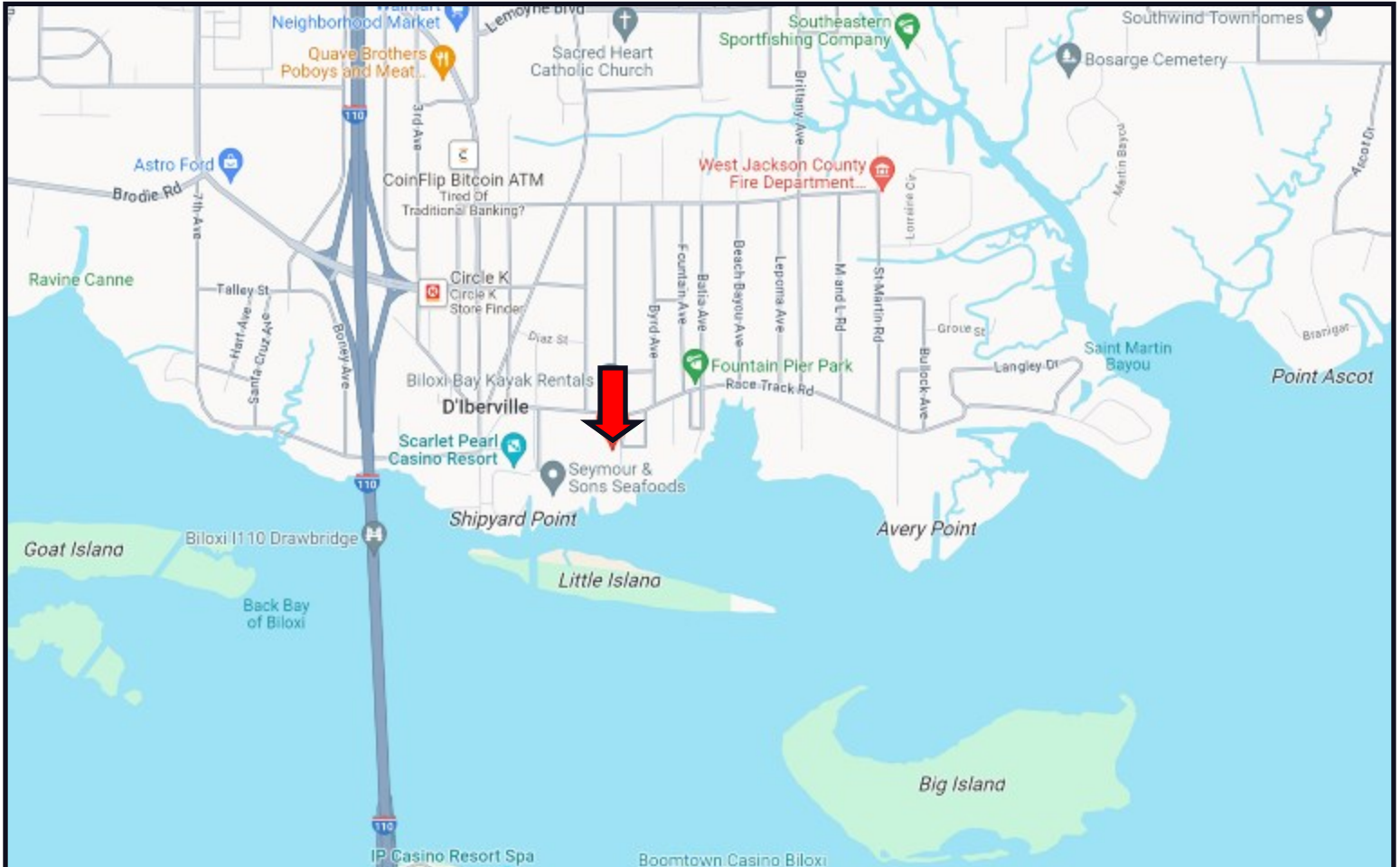
[TomSmithLandandHomes.com](http://TomSmithLandandHomes.com)

Information is believed to be accurate but not guaranteed.





# Directional Map



**Directions from the intersection of I-110 N and Rodriguez Street in D'Iberville, MS: Take exit 2 towards D'Iberville. Merge onto Rodriguez Street and travel .2 miles. Turn right onto Central Avenue and travel .2 miles. Turn right onto Race Track Road and travel 0.3 miles. Turn left onto Fournier Avenue. After 354 feet, the property will be on your right. [Google Map Link](#)**



DAVID  
**BELDEN**  
REALTOR®

Office: 601.898.2772  
Cell: 601.415.3883

[DBelden@TomSmithLand.com](mailto:DBelden@TomSmithLand.com)



**A Real Estate Expert You Can Trust**

[TomSmithLandandHomes.com](http://TomSmithLandandHomes.com)

Information is believed to be accurate but not guaranteed.

