



MADISON COUNTY HOMESITE

2 ± ACRES IN MADISON, MS



\$38,000

This 2± acre lot is located in North Eastern Madison County and features plenty of road frontage on Permenter Road. The property is conveniently located in the Madison County School District and between the cities of Canton and Carthage. If you want a place to build in the county but close to the amenities of the city, buzz Belden today!

DIRECTIONS FROM THE INTERSECTION OF HWY 16 AND HWY 17 IN FARMHAVEN, MS: Travel Hwy 16 for 6.6 miles. Turn right on to Permenter Rd. The property will be on your right.

[Google Map Link](#)



call me today!

DAVID BELDEN, REALTOR®

DBelden@TomSmithLand.com

601.898.2772 office | 601.415.3884 cell



Expect More. Get More.

TomSmithLandandHomes.com

Information is believed to be accurate but not guaranteed.



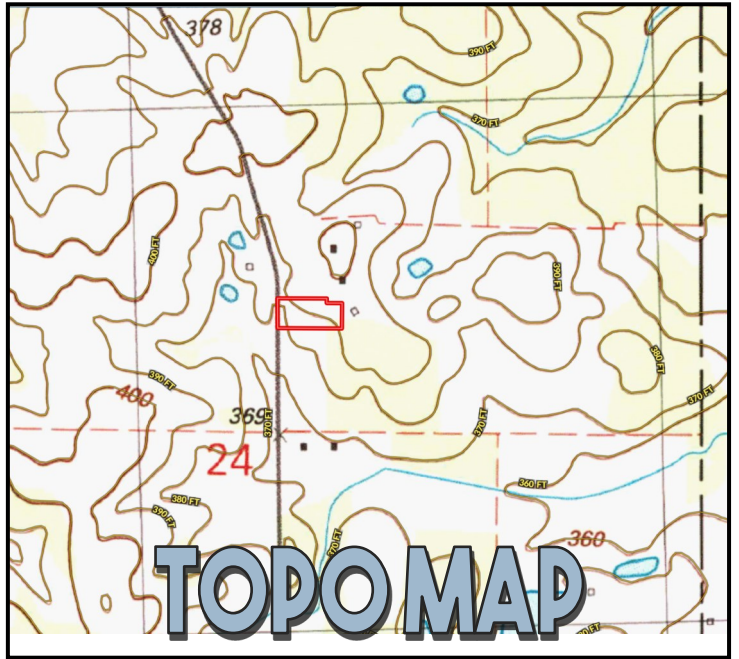
DAVID BELDEN, REALTOR®
 DBelden@TomSmithLand.com
 601.898.2772 **office** | 601.415.3884 **cell**



Expect More. Get More.

TomSmithLandandHomes.com

Information is believed to be accurate but not guaranteed.

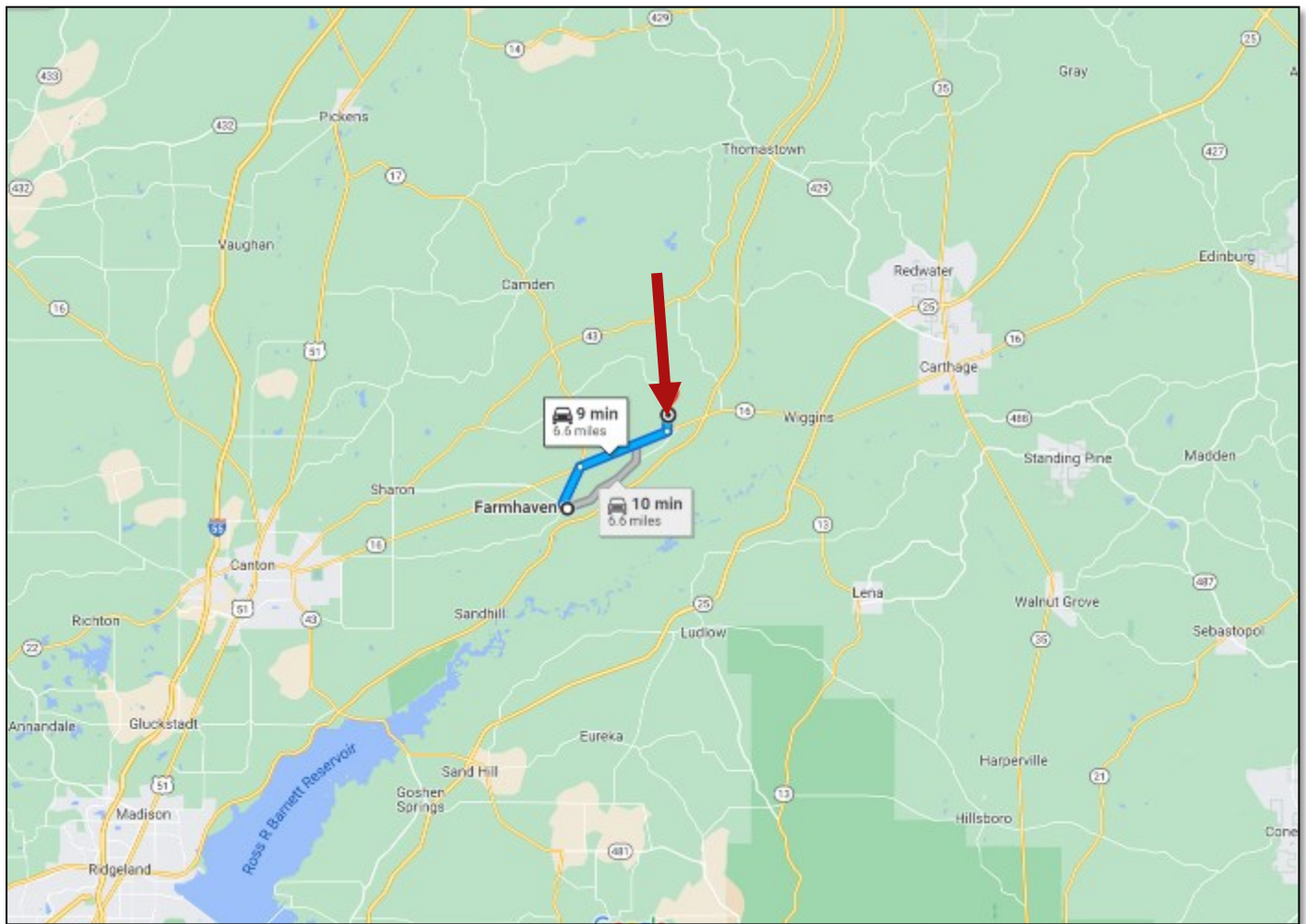


DAVID BELDEN, REALTOR®
DBelden@TomSmithLand.com
601.898.2772 **office** | 601.415.3884 **cell**



TomSmithLandandHomes.com

Information is believed to be accurate but not guaranteed.



DIRECTIONAL MAP

DIRECTIONS FROM THE INTERSECTION OF HWY 16 AND HWY 17 IN FARMHAVEN, MS: Travel Hwy 16 for 6.6 miles. Turn right on to Permenter Rd. The property will be on your right. [Google Map Link](#)



call me today!

DAVID BELDEN, REALTOR®
 DBelden@TomSmithLand.com
 601.898.2772 office | 601.415.3884 cell



TomSmithLandandHomes.com

Information is believed to be accurate but not guaranteed.