

2.8+/- Acres in Jefferson Davis County, MS



183 Bass-Hawthorn Road
Prentiss, MS 39474

\$30,000

Looking for solitude in Jefferson Davis County while still being close to town? You have found it on this 2.8+/- acre property, located just minutes from Prentiss, MS. The property has no restrictions and has had a mobile home on it in the past. Community water is available, and power is at the road. This fantastic small acreage tract features two gates, and over 500 feet of road frontage. The topography is slightly sloped with great drainage and multiple home sites to choose from.

Directions from the intersection of US-84 and MS-13 in Prentiss, MS: Travel south on MS-13 for .2 miles. Turn left onto MS-184 and travel for .7 miles. Turn right onto Granby Road and travel for .7 miles. Turn right onto Bass-Hawthorne Road and travel for .2 miles. The property will be on the right.

183 Bass-Hawthorne

Road Prentiss, MS 39674



call me today!

CLIF CANNON, REALTOR®
Clif@TomSmithLand.com
601.990.5070 office | 601.565.1070 cell



TomSmithLandandHomes.com

Information is believed to be accurate but not guaranteed.



Expect More. Get More.

CLIF CANNON, REALTOR®

Clif@TomSmithLand.com

601.990.5070 office | 601.565.1070 cell



TomSmithLandandHomes.com

Information is believed to be accurate but not guaranteed.

Aerial Map

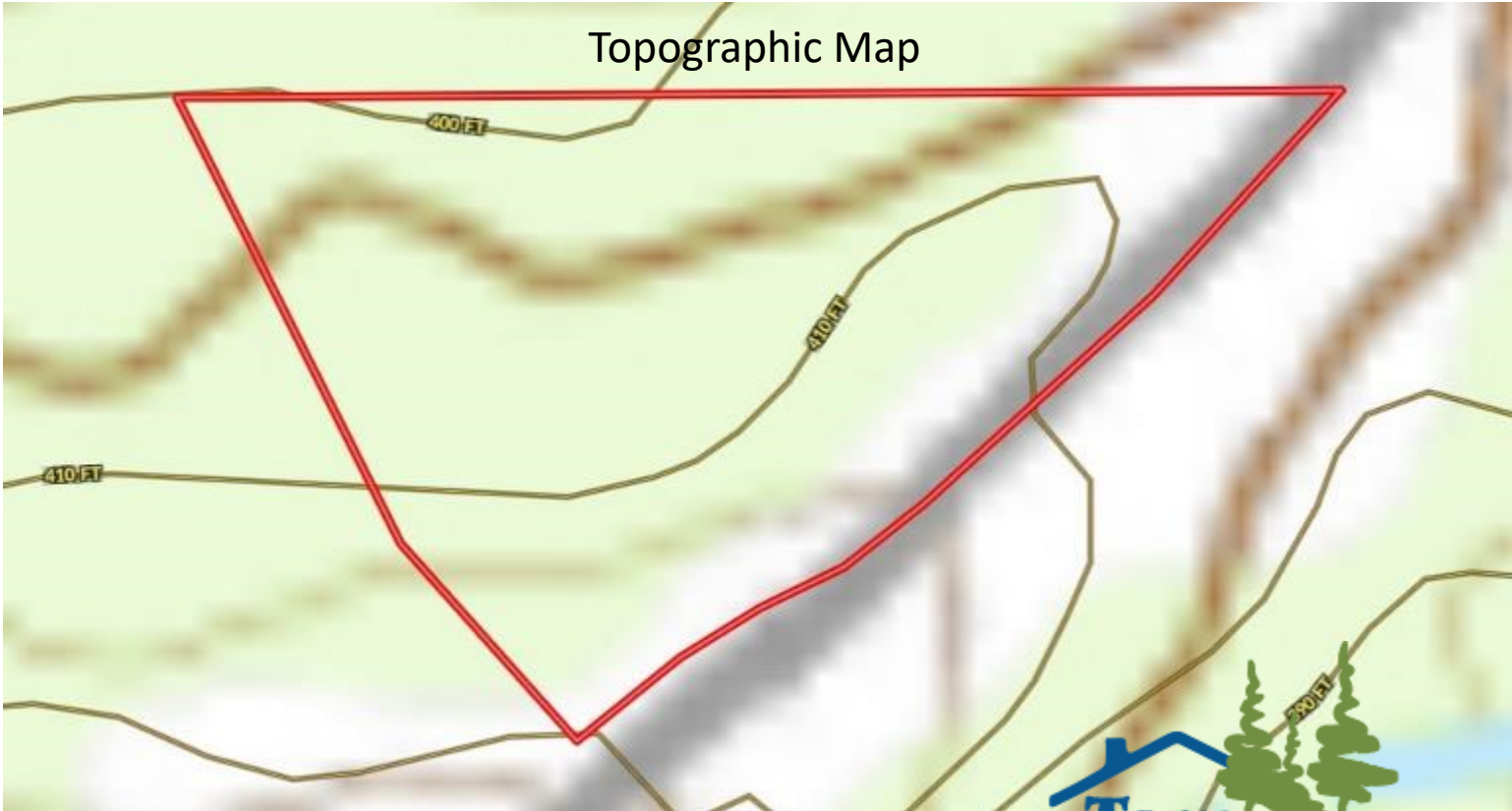
2.8+/- Acres

BASS-HATHORN RD

31.6073, -89.8408

BASS-HATHORN RD

Topographic Map



CLIF CANNON, REALTOR®

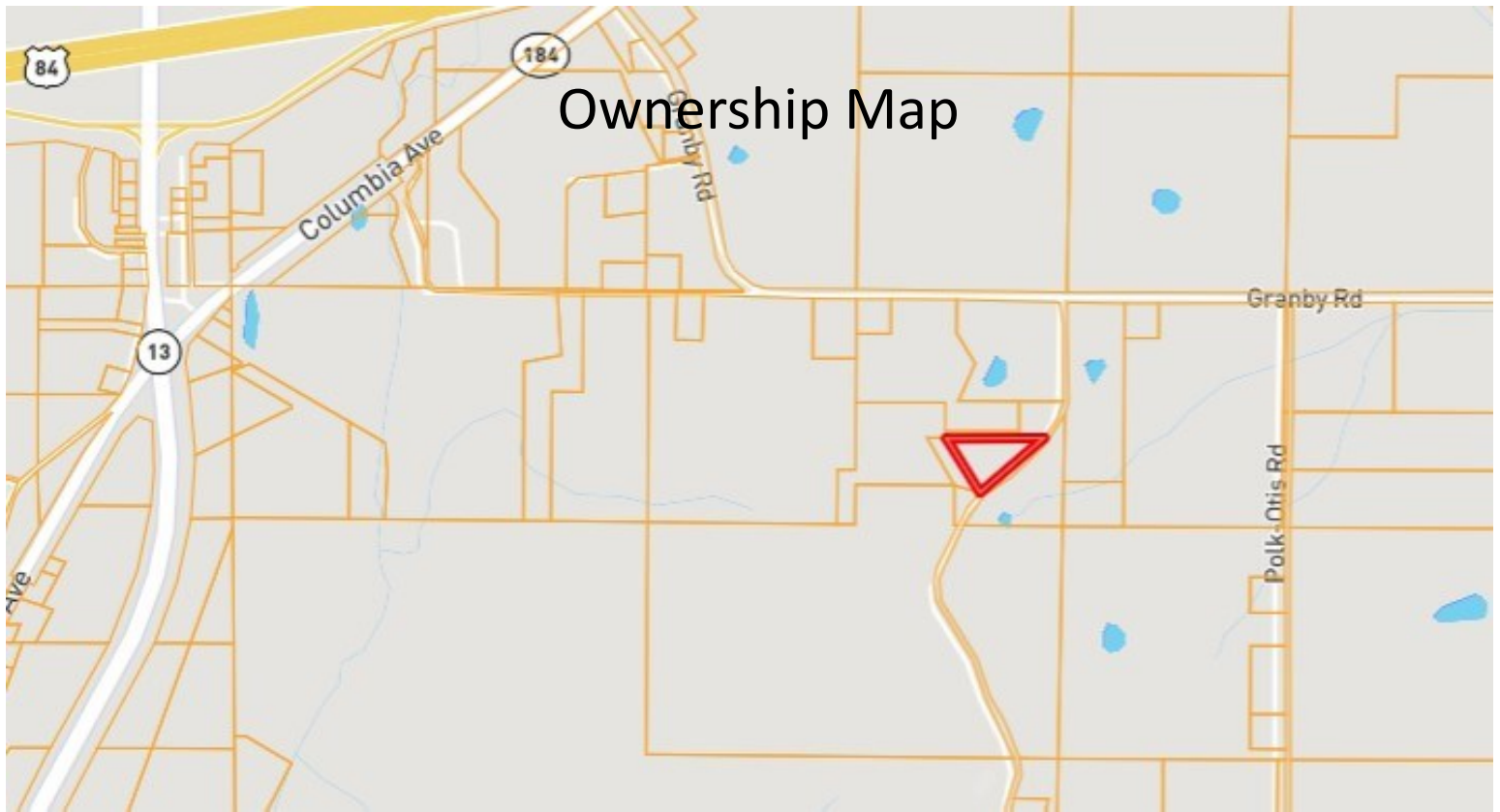
Clif@TomSmithLand.com

601.990.5070 office | 601.565.1070 cell

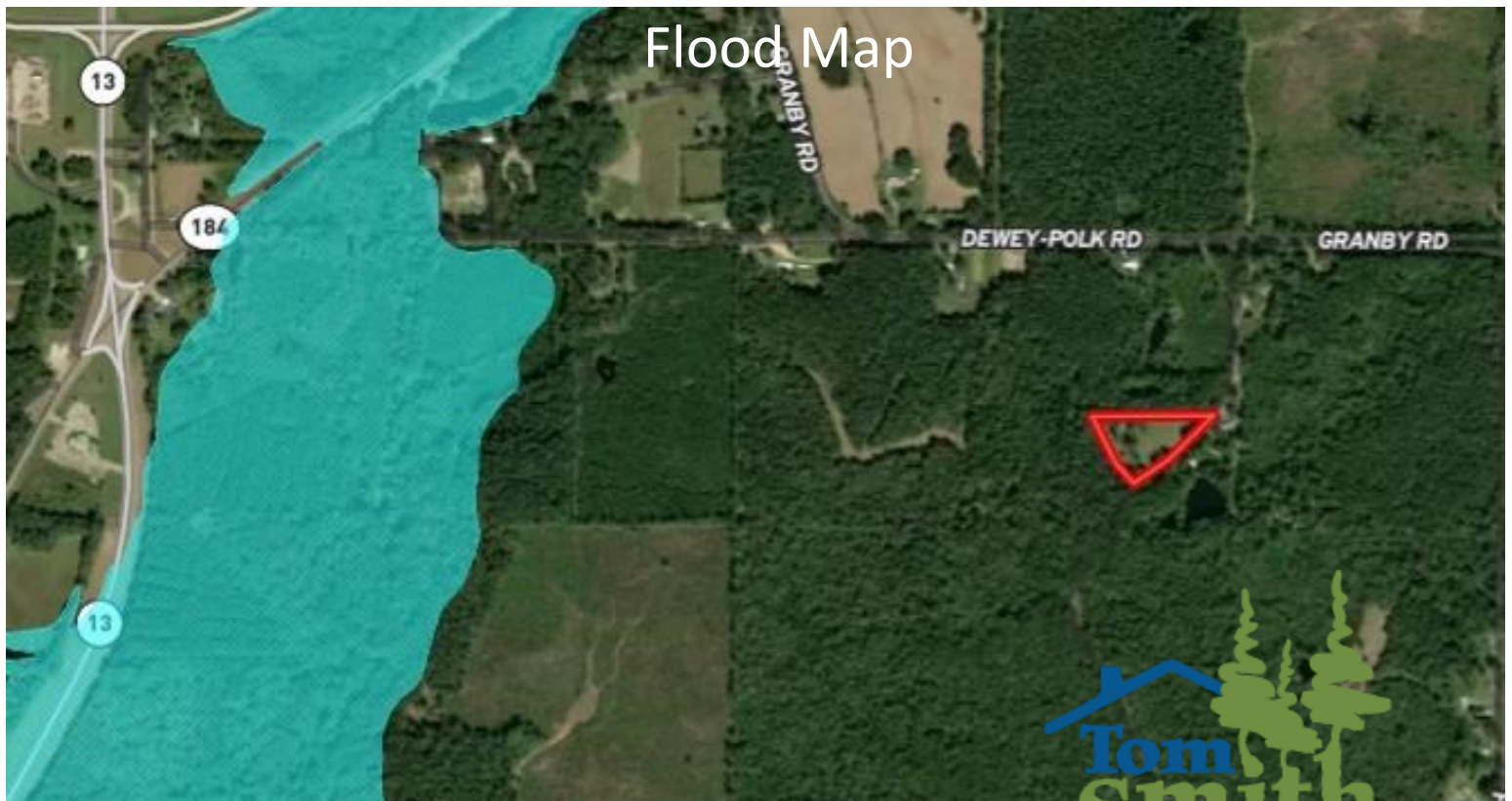


TomSmithLandandHomes.com

Information is believed to be accurate but not guaranteed.



Ownership Map



Flood Map



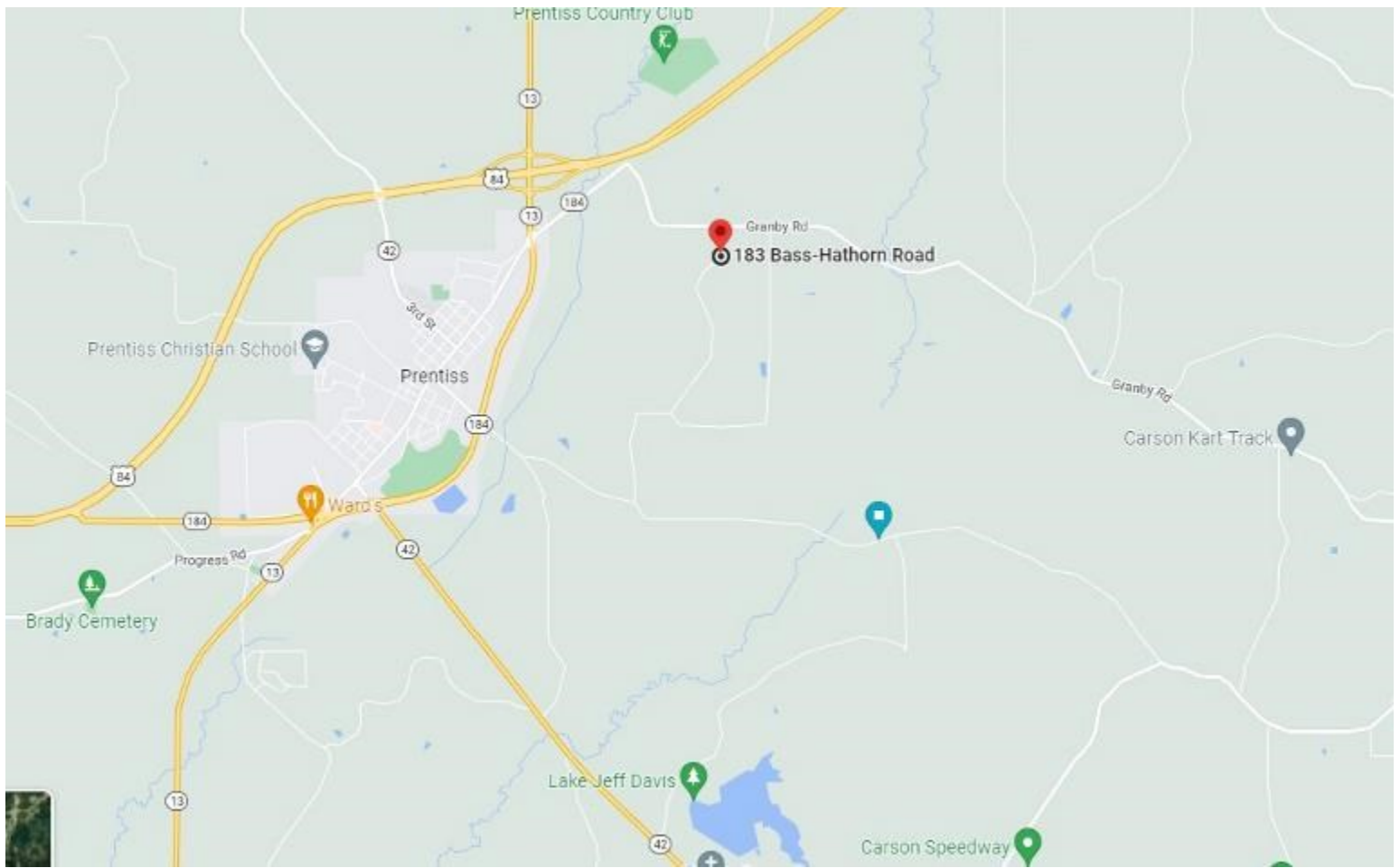
CLIF CANNON, REALTOR®
Clif@TomSmithLand.com
601.990.5070 office | 601.565.1070 cell



Expect More. Get More.

TomSmithLandandHomes.com

Information is believed to be accurate but not guaranteed.



Directional Map

Directions from the intersection of US-84 and MS-13 in Prentiss, MS: Travel south on MS-13 for .2 miles. Turn left onto MS-184 and travel for .7 miles. Turn right onto Granby Road and travel for .7 miles. Turn right onto Bass-Hawthorne Road and travel for .2 miles. The property will be on the right.

183 Bass-Hawthorne Road

Prentiss, MS 39674



CLIF CANNON, REALTOR®
Clif@TomSmithLand.com
601.990.5070 office | 601.565.1070 cell



TomSmithLandandHomes.com

Information is believed to be accurate but not guaranteed.