



0.23+/- Acre Home Site Hancock County, MS



\$49,500

7840 Maui Circle, Diamondhead, MS 39525

If you are looking for a perfect waterfront lot to build your forever home in Hancock County, MS, then this is it! This .23 +/- acre lot on Maui Circle in Diamondhead School District is the perfect location. Conveniently located just minutes from I-10. There is power and water available on site, so all you have to do is build the home of your dreams! There are covenants that apply. Call Tara today to schedule a viewing!

Directions from exit 16 off of I-10 W in Diamondhead, MS: Merge onto Gex Drive. Travel 315 feet and turn right onto W Aloha Drive. Travel 0.2 miles and turn left onto Kalani Drive. Travel 0.2 miles and turn right onto Diamondhead Drive E. Travel 1.4 miles and turn left onto Hilo Street. Travel 0.5 miles and merge onto Maui Circle. Travel 0.2 miles and the property will be on the right.

Address: 9480 Maui Street, Diamondhead, MS 39525



Call me today!

TARA WALKER SMITH, REALTOR®
Tara@TomSmithHomes.com
601.990.5070 **office** | 601.407.4315 **cell**



Expect More. Get More.

TomSmithLandandHomes.com

Information is believed to be accurate but not guaranteed.



LandReport
2011-2021
BEST
BROKERAGES

Call me today!

TARA WALKER SMITH, REALTOR®
Tara@TomSmithHomes.com
601.990.5070 office | 601.407.4315 cell

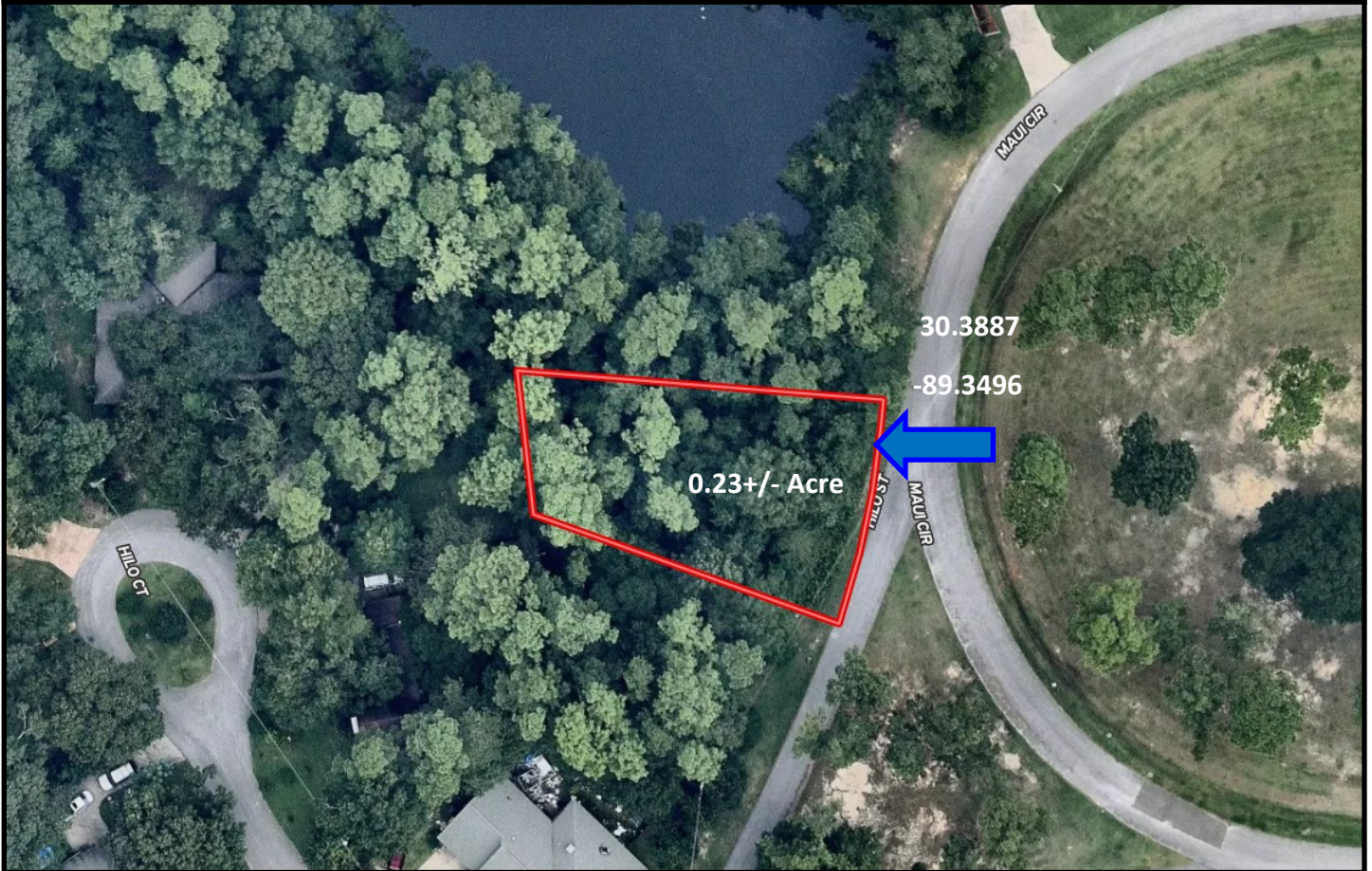


Expect More. Get More.

TomSmithLandandHomes.com

Information is believed to be accurate but not guaranteed.

Aerial Map



[Click for Interactive Map](#)



LandReport
2011-2021
AMERICA'S
BEST
BROKERAGES

Call me today!

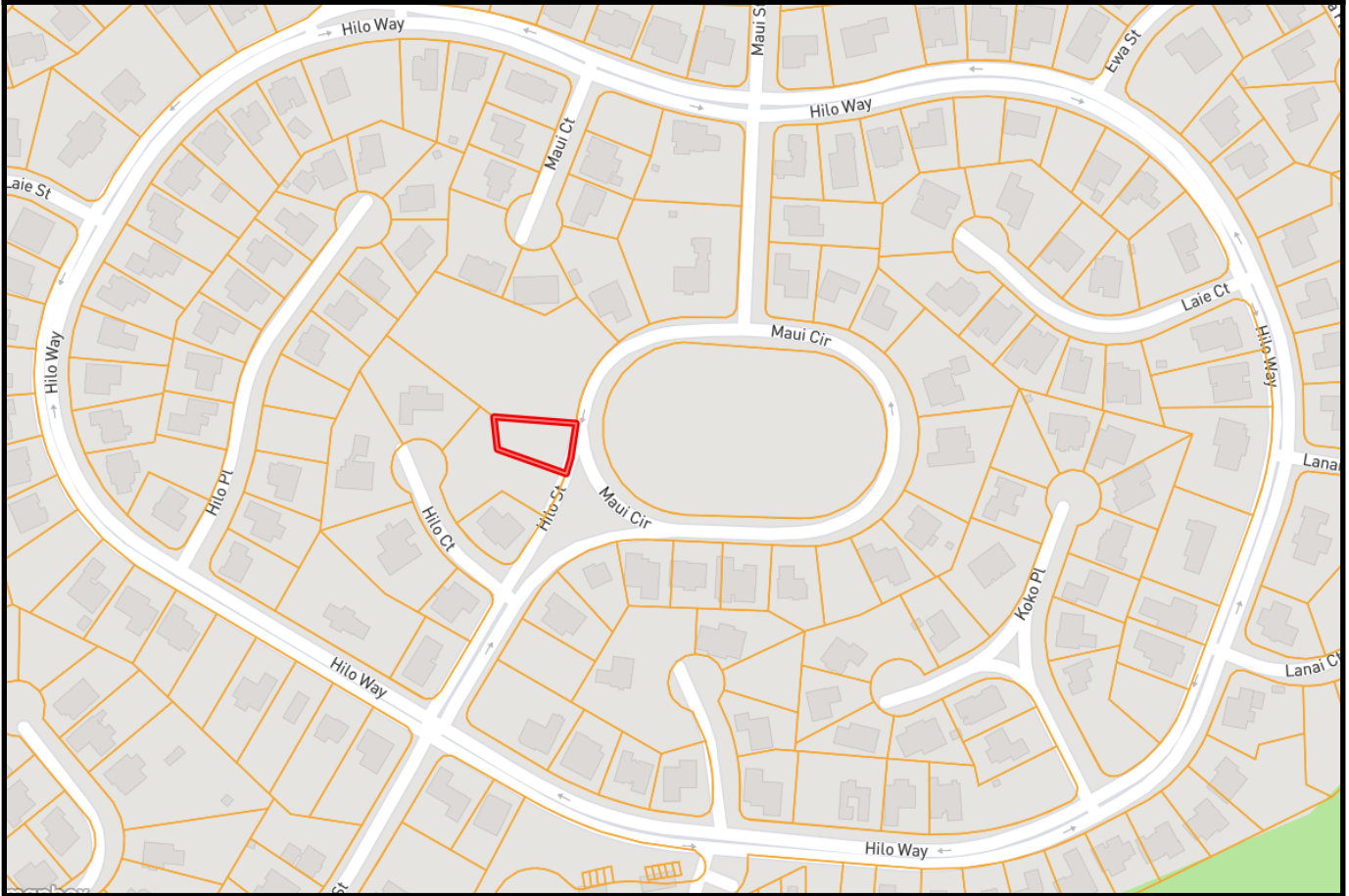
TARA WALKER SMITH, REALTOR®
Tara@TomSmithHomes.com
601.990.5070 **office** | 601.407.4315 **cell**



TomSmithLandandHomes.com

Information is believed to be accurate but not guaranteed.

Ownership Map



LandReport
2011-2021
NATIONAL
BEST
BROKERAGES

Call me today!

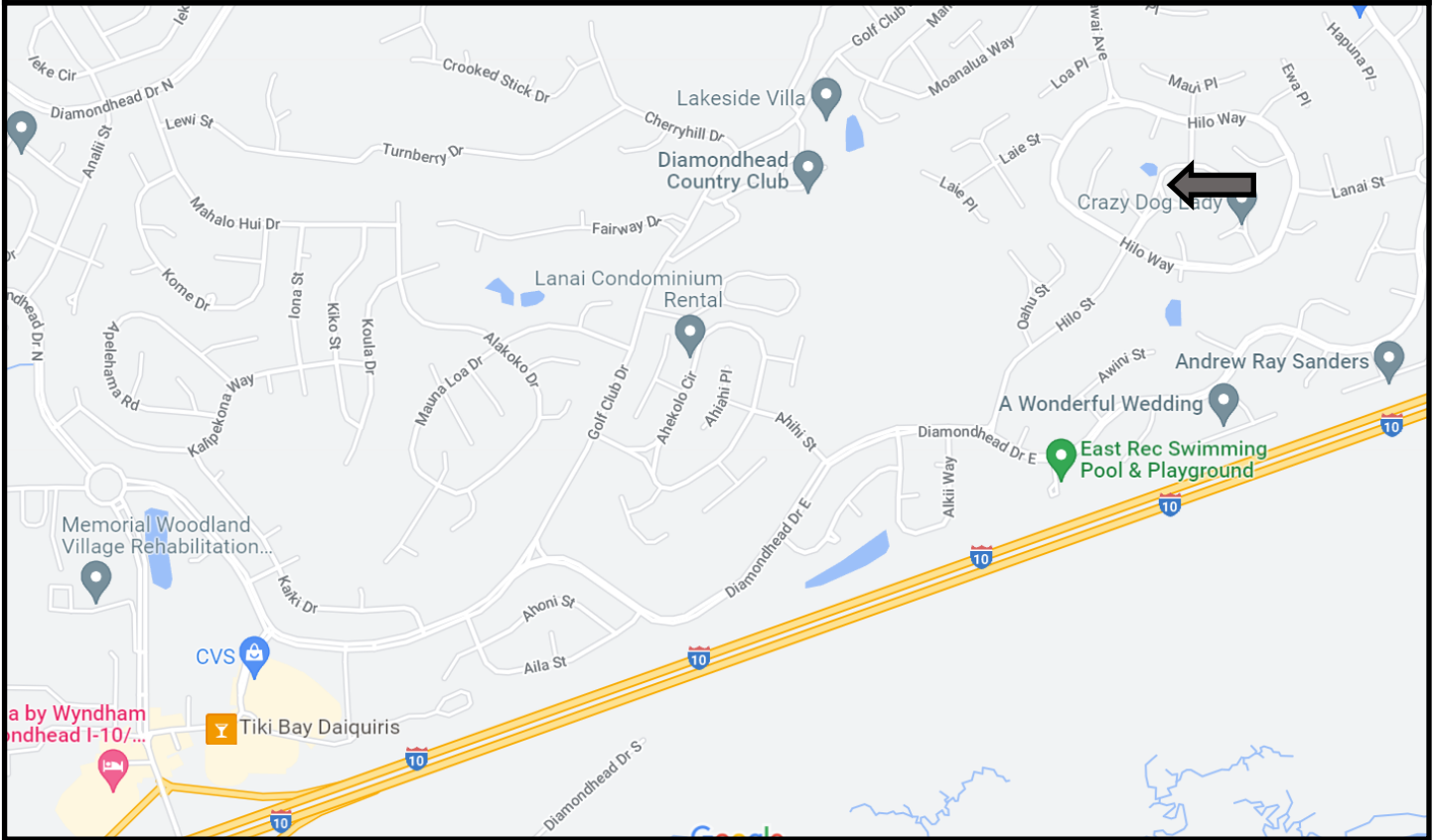
TARA WALKER SMITH, REALTOR®
Tara@TomSmithHomes.com
601.990.5070 office | 601.407.4315 cell



TomSmithLandandHomes.com

Information is believed to be accurate but not guaranteed.

Directional Map



Directions from exit 16 off of I-10 W in Diamondhead, MS: Merge onto Gex Drive. Travel 315 feet and turn right onto W Aloha Drive. Travel 0.2 miles and turn left onto Kalani Drive. Travel 0.2 miles and turn right onto Diamondhead Drive E. Travel 1.4 miles and turn left onto Hilo Street. Travel 0.5 miles and merge onto Maui Circle. Travel 0.2 miles and the property will be on the right.

Address: 9480 Maui Circle, Diamondhead, MS 39525



Call me today!

TARA WALKER SMITH, REALTOR®
Tara@TomSmithHomes.com
601.990.5070 office | 601.407.4315 cell



TomSmithLandandHomes.com

Information is believed to be accurate but not guaranteed.