

BLANK SLATE

132± ACRES IN
JASPER COUNTY, MS



This 132± acre property in Jasper County, MS, is a blank slate for all the many possible things with this tract! This tract consists of approximately 100 +/- acres of freshly replanted pine, with the remainder of the property consisting of mature pine timber. The hunting opportunity here is outstanding, being a game-rich area and mostly cutover, and you can design the property any way you like. There is a 30 foot wide easement with an established road system that begins at Highway 11 to the property, the east boundary line is a railway, and the rest of the property is surrounded by a large landowner. Call Brett today to schedule your private showing!

DIRECTIONS FROM THE INTERSECTION OF CR 35 AND MAINS STREET IN HEIDELBERG, MS: Travel CR 35 for 1.1 miles. Turn left on Hess Rd. and the entrance to the property will be at the end of the road. [GOOGLE MAP LINK](#)



Call me today!

BRETT CARNEY, REALTOR ©
Brett@TomSmithLand.com
662.268.6333 office | 601.710.9633 cell



TomSmithLandandHomes.com

Information is believed to be accurate but not guaranteed.



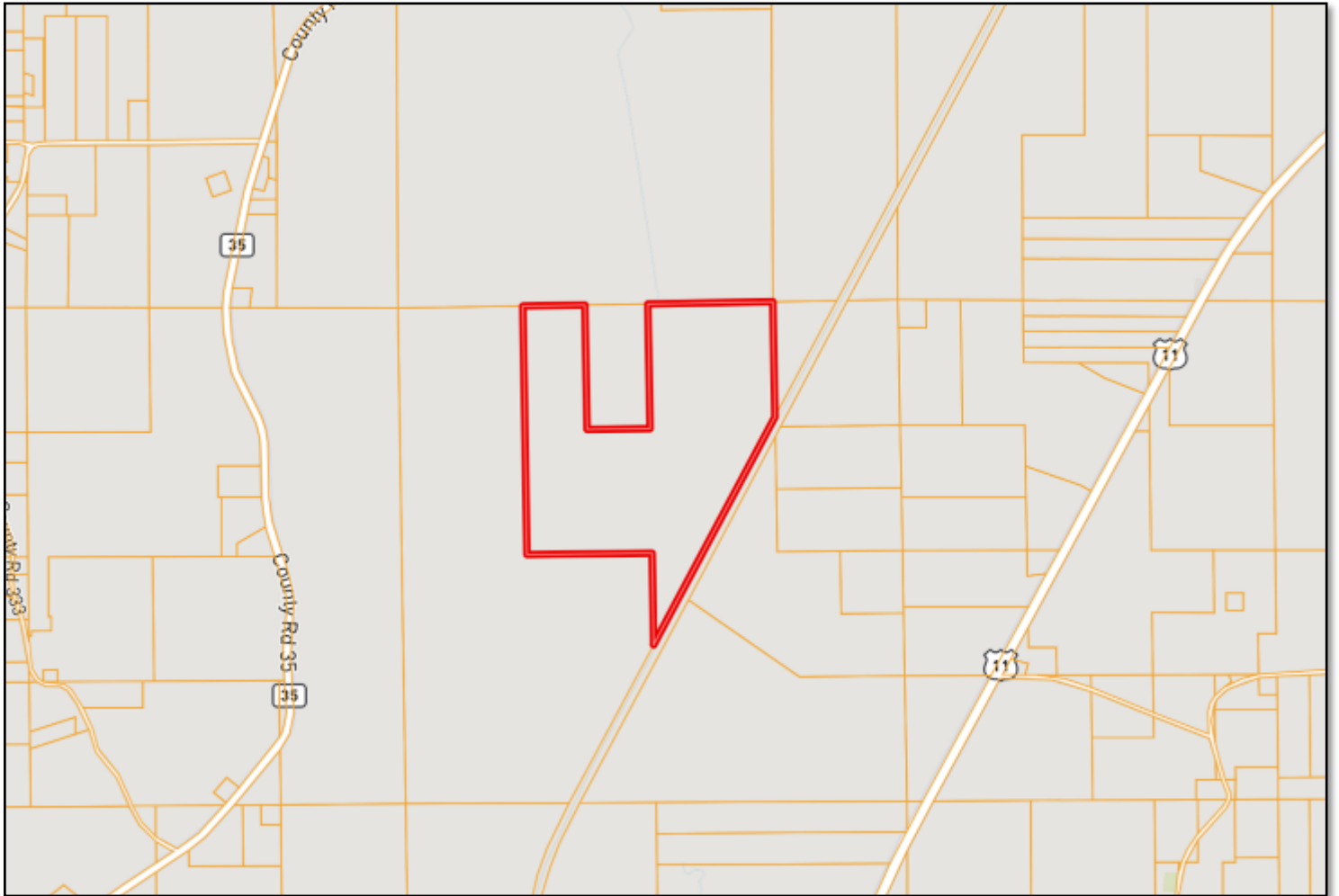
BRETT CARNEY, REALTOR®
Brett@TomSmithLand.com
662.268.6333 office | 601.710.9633 cell



TomSmithLandandHomes.com

Information is believed to be accurate but not guaranteed.

OWNERSHIP MAP



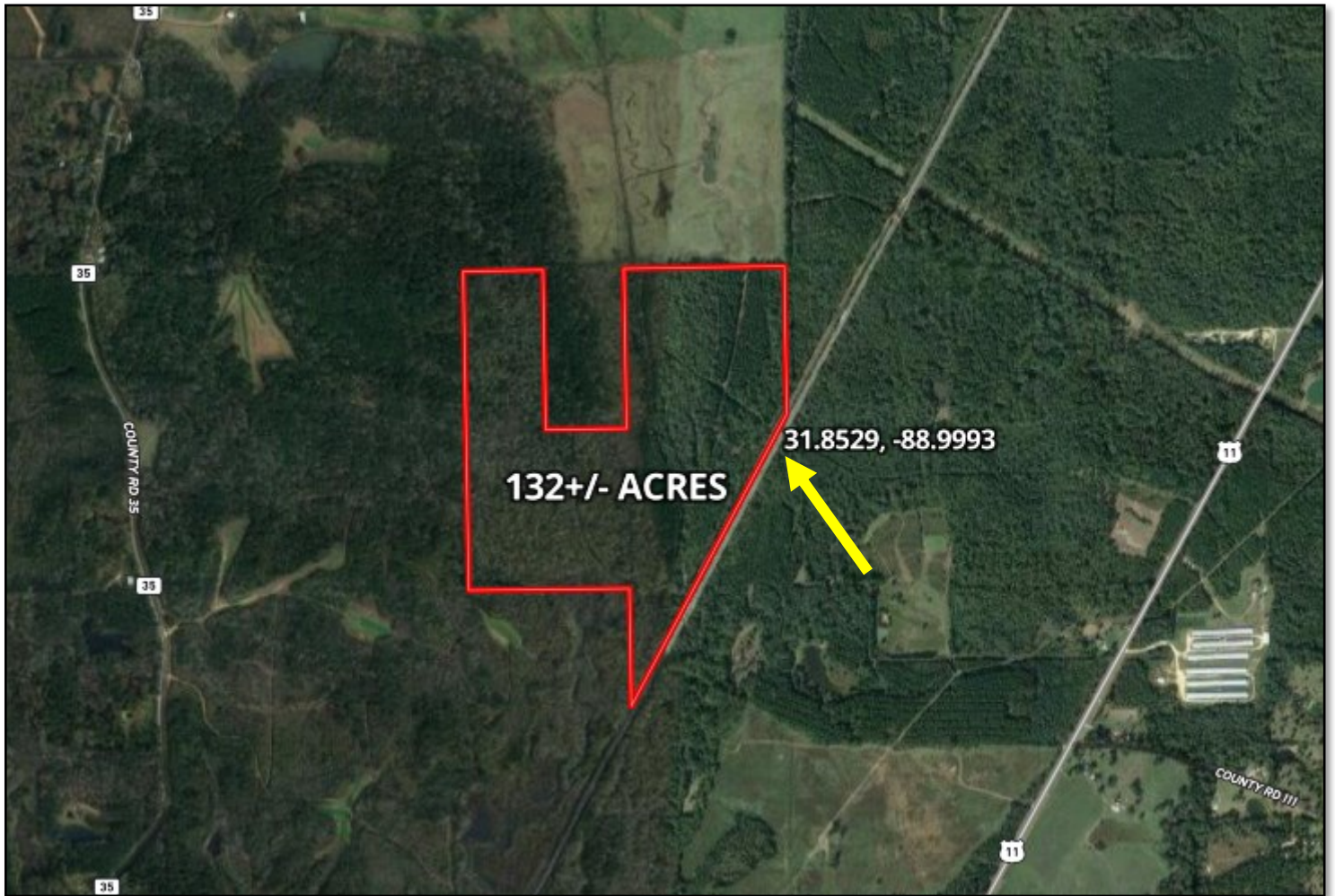
BRETT CARNEY, REALTOR®
Brett@TomSmithLand.com
662.268.6333 office | 601.710.9633 cell



TomSmithLandandHomes.com

Information is believed to be accurate but not guaranteed.

AERIAL MAP



[CLICK HERE FOR AN INTERACTIVE MAP](#)

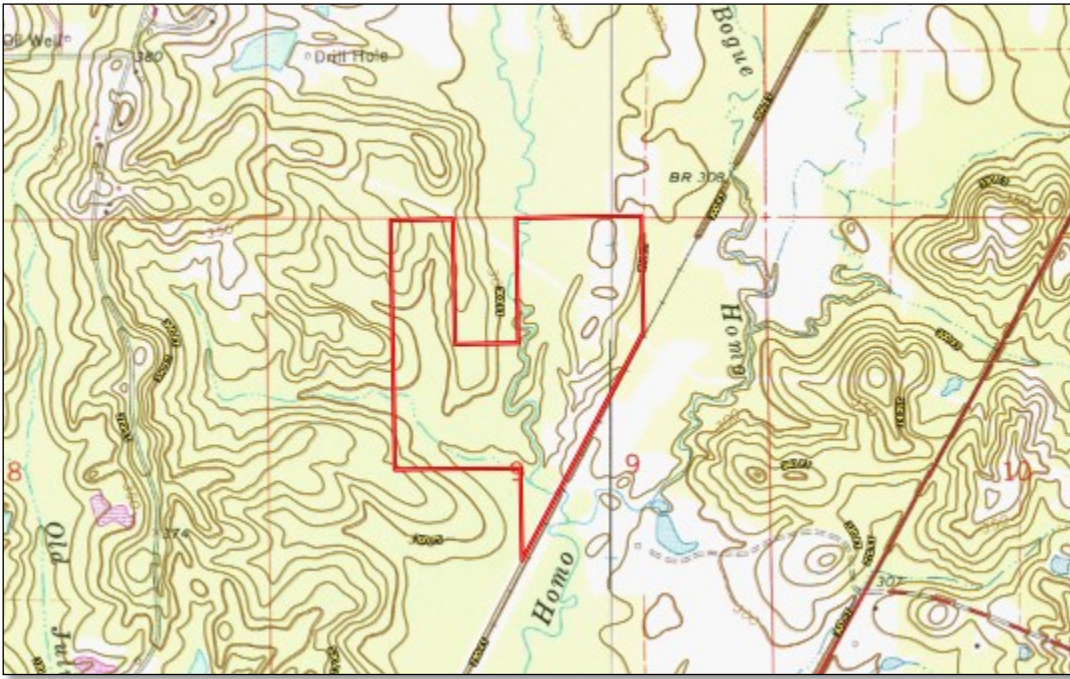


BRETT CARNEY, REALTOR®
Brett@TomSmithLand.com
662.268.6333 office | 601.710.9633 cell

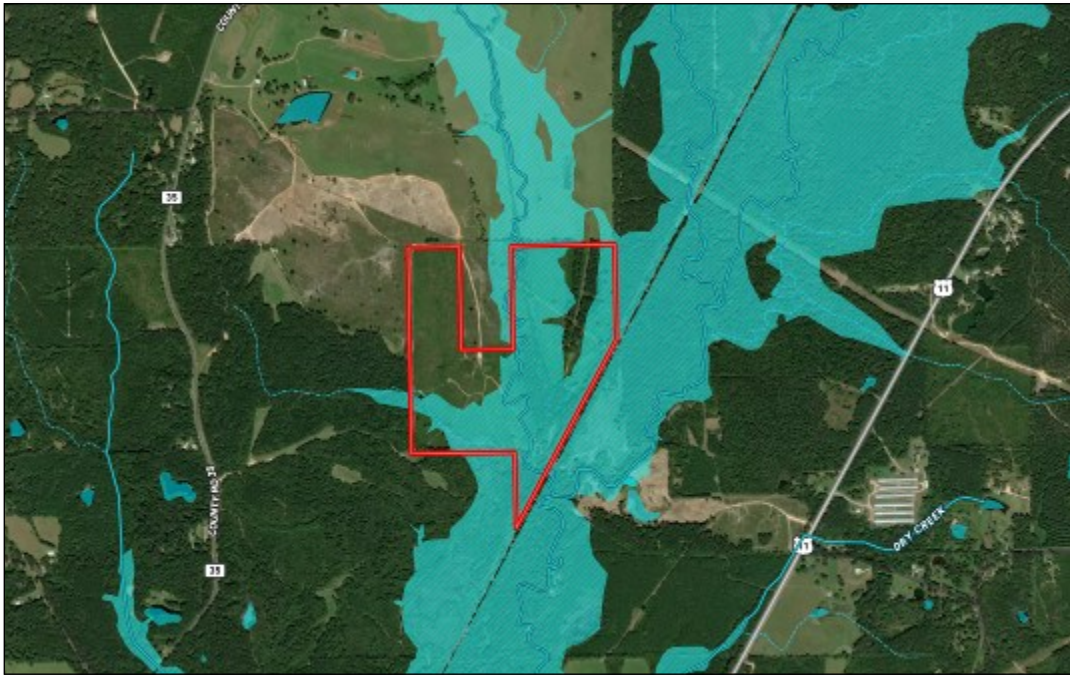


TomSmithLandandHomes.com

Information is believed to be accurate but not guaranteed.



TOPO MAP



FLOOD AND WATER FEATURES MAP



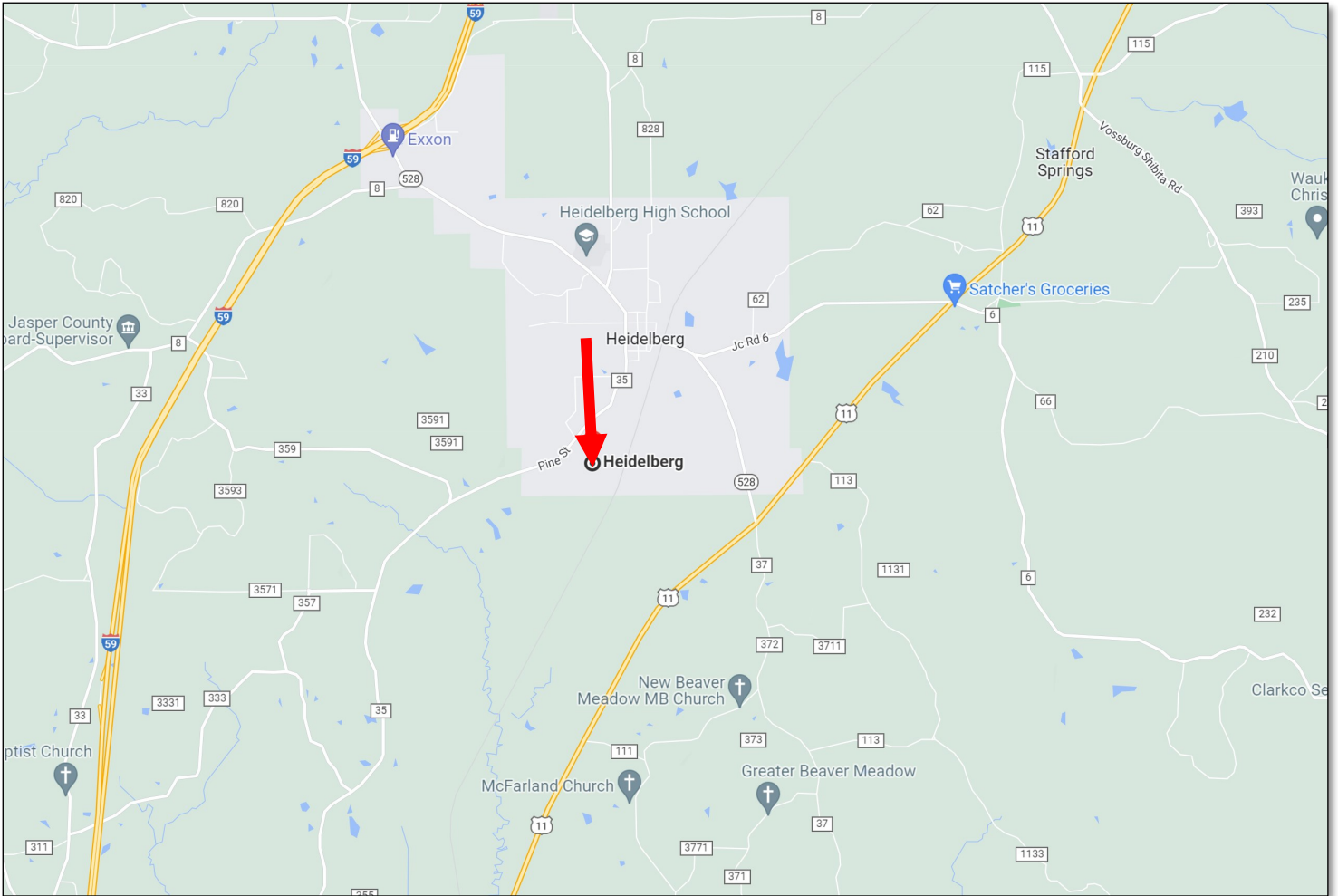
BRETT CARNEY, REALTOR®
Brett@TomSmithLand.com
662.268.6333 office | 601.710.9633 cell



TomSmithLandandHomes.com

Information is believed to be accurate but not guaranteed.

DIRECTIONAL MAP



DIRECTIONS FROM THE INTERSECTION OF CR 35 AND MAINS STREET IN HEIDELBERG, MS:
Travel CR 35 for 1.1 miles. Turn left on Hess Rd. and the entrance to the property will be at the end of the road. [GOOGLE MAP LINK](#)



Call me today!

BRETT CARNEY, REALTOR®

Brett@TomSmithLand.com

662.268.6333 office | 601.710.9633 cell



TomSmithLandandHomes.com

Information is believed to be accurate but not guaranteed.