

76.25 +/- Acre Recreational Tract Lowndes County, Mississippi



\$2,099/acre

Look at this hunting spot west of the New Hope community in Lowndes County with access and frontage on both Yorkville Road and Crowe Road. Utilities are available for a home-site, camp, or other use. Timber types are diverse, including pine stands, hardwood pulpwood, and saw-timber to wetlands with hardwood regeneration. Game is plentiful with food plots already present along the power line row. Build a home or camp on the outskirts of town and enjoy hunting right outside the door. Potential building sites are along the road frontages. Call Michael to set up an appointment to visit the property.

Directions from intersection of MS-182 East & MS Hwy 69 in Columbus, MS: turn onto Idlewild Road and travel 2.5 miles. Turn left onto Yorkville Road East and travel 2.1 miles to the property on the right (marked with sign).



Call me today!

MICHAEL HALFACRE, MS REGISTERED FORESTER, ASSOC. BROKER

MHalfacre@TomSmithLand.com

662.268.6333 office | 662.242.4220 cell



TomSmithLandandHomes.com

Information is believed to be accurate but not guaranteed.



MICHAEL HALFACRE, MS REGISTERED FORESTER, ASSOC. BROKER
 MHalfacre@TomSmithLand.com
 662.268.6333 office | 662.242.4220 cell



TomSmithLandandHomes.com

Information is believed to be accurate but not guaranteed.



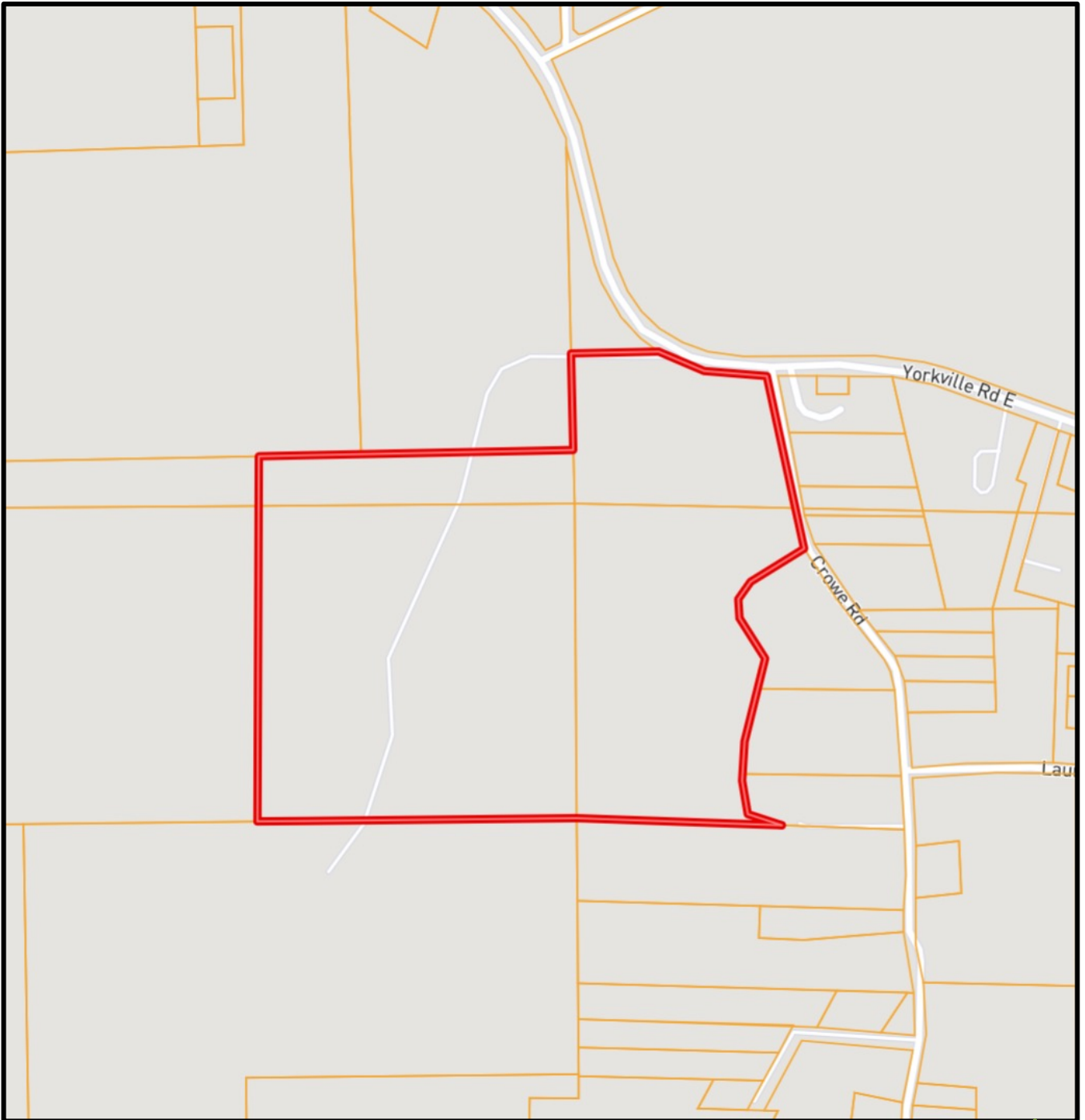
MICHAEL HALFACRE, MS REGISTERED FORESTER, ASSOC. BROKER
 MHalfacre@TomSmithLand.com
 662.268.6333 office | 662.242.4220 cell



TomSmithLandandHomes.com

Information is believed to be accurate but not guaranteed.

Ownership Map



MICHAEL HALFACRE, MS REGISTERED FORESTER, ASSOC. BROKER

MHalfacre@TomSmithLand.com

662.268.6333 office | 662.242.4220 cell



Expect More. Get More.

TomSmithLandandHomes.com

Information is believed to be accurate but not guaranteed.

Aerial Photograph



33.4652,
-88.3597

76.25 +/- Acres

YORKVILLE RD E

CROWE RD

[Click for Interactive Map](#)



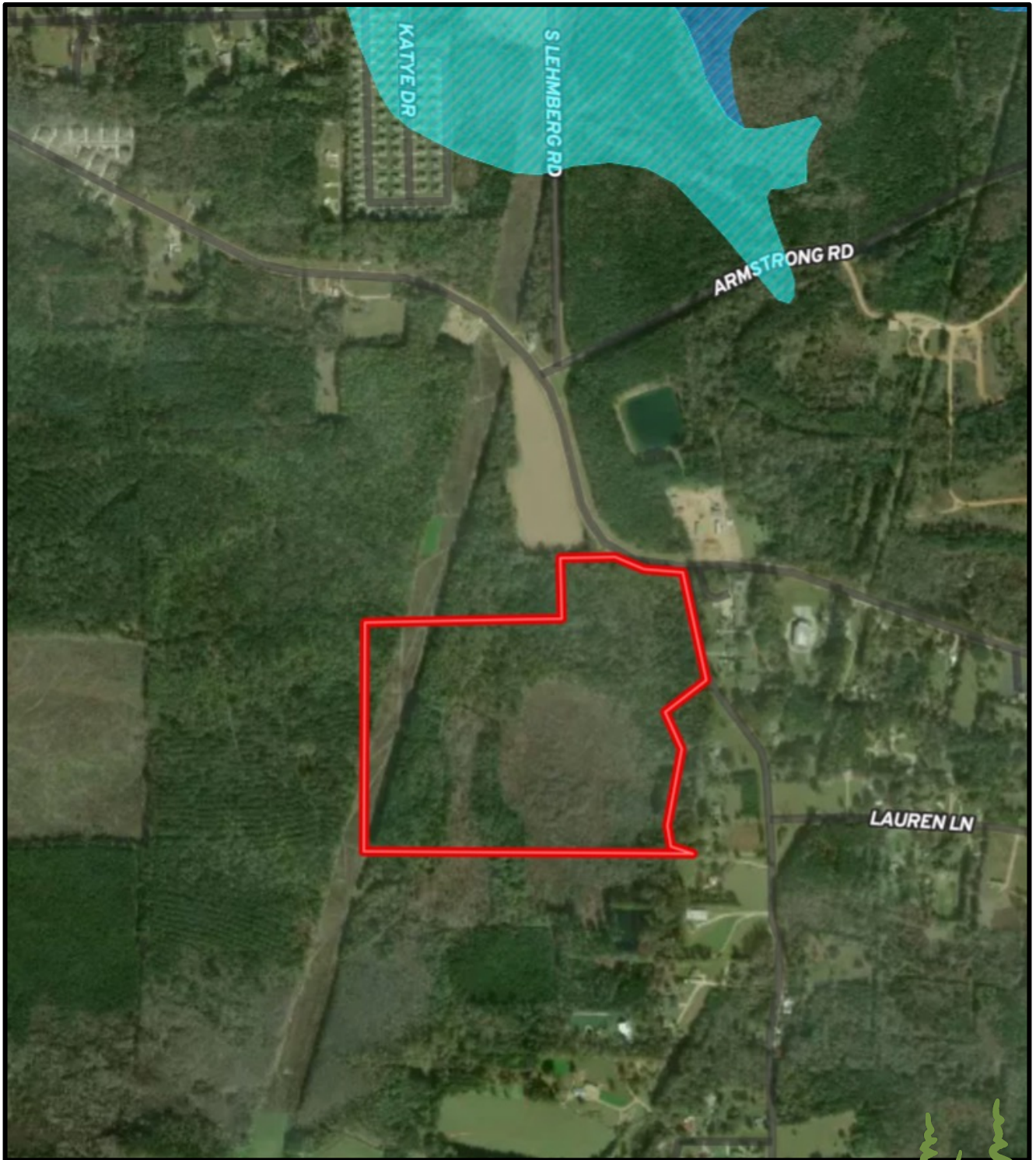
MICHAEL HALFACRE, MS REGISTERED FORESTER, ASSOC. BROKER
MHalfacre@TomSmithLand.com
662.268.6333 office | 662.242.4220 cell



TomSmithLandandHomes.com

Information is believed to be accurate but not guaranteed.

FEMA Flood Map



MICHAEL HALFACRE, MS REGISTERED FORESTER, ASSOC. BROKER

MHalfacre@TomSmithLand.com

662.268.6333 office | 662.242.4220 cell

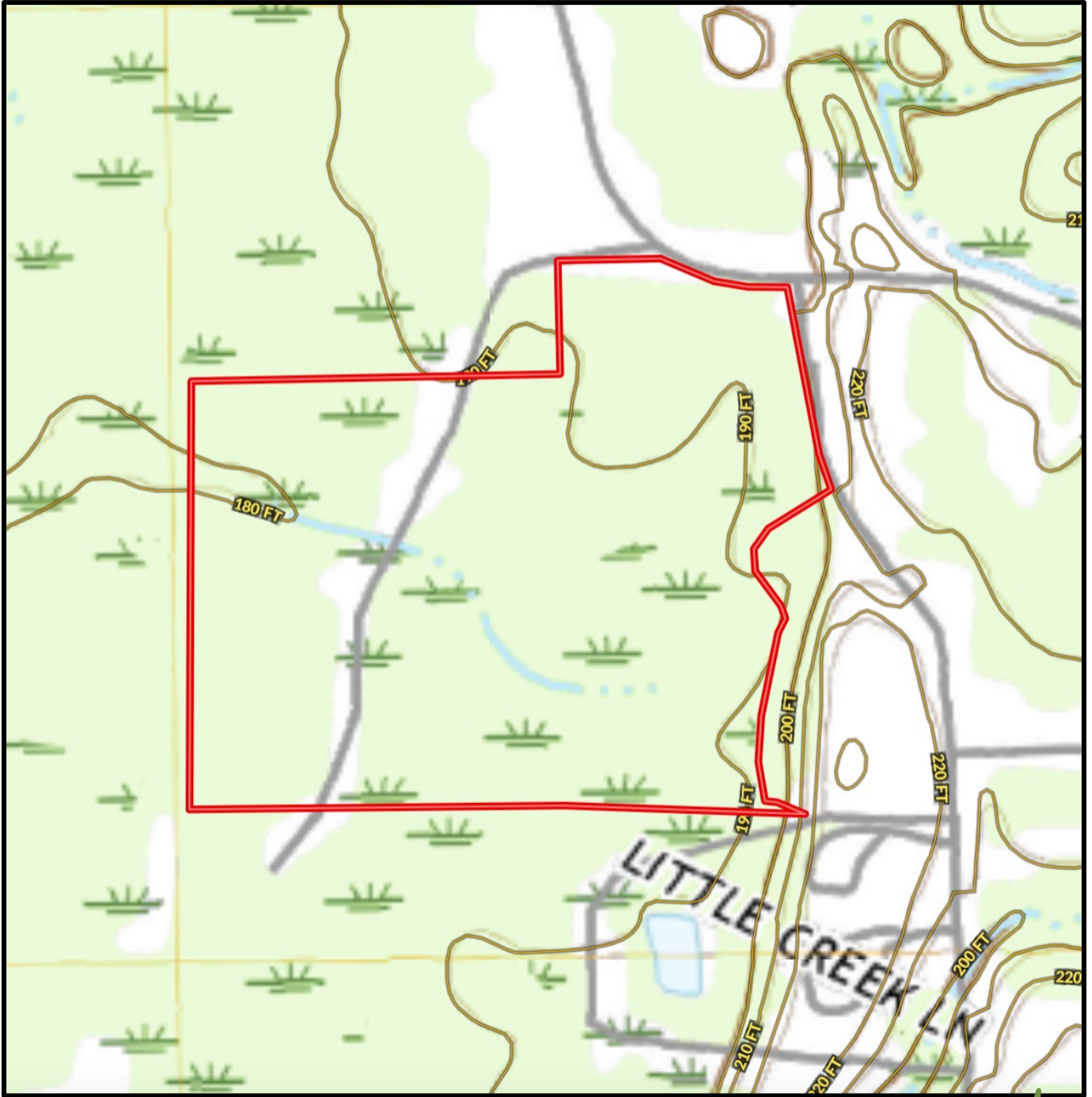


Expect More. Get More.

TomSmithLandandHomes.com

Information is believed to be accurate but not guaranteed.

Topographic Map



MICHAEL HALFACRE, MS REGISTERED FORESTER, ASSOC. BROKER
MHalfacre@TomSmithLand.com
662.268.6333 office | 662.242.4220 cell

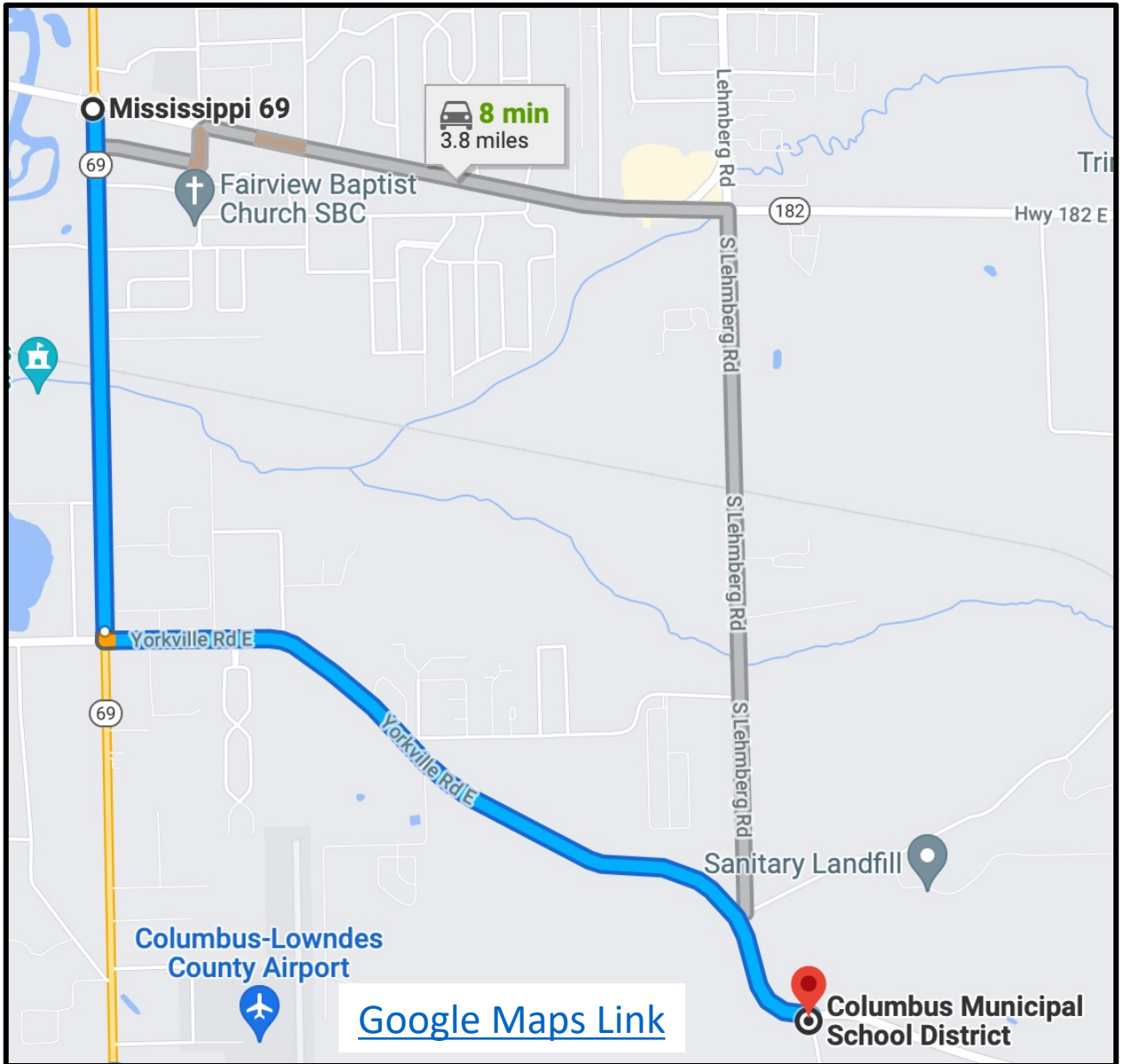


TomSmithLandandHomes.com

Information is believed to be accurate but not guaranteed.



Directional Map



Directions from intersection of MS-182 East & MS Hwy 69 in Columbus, MS; turn onto Idlewild Road and travel 2.5 miles. Turn left onto Yorkville Road East and travel 2.1 miles to the property on the right (marked with sign).



call me today!

MICHAEL HALFACRE, MS REGISTERED FORESTER, ASSOC. BROKER

MHalfacre@TomSmithLand.com

662.268.6333 office | 662.242.4220 cell



TomSmithLandandHomes.com

Information is believed to be accurate but not guaranteed.