

130+/- Acre Hunting Property Lawrence County, MS



\$1,950 per acre

Are you looking for a perfect hunting property in Lawrence County, MS? This 130+/- acre tract could be the one! With abundant deer signs, four year old cutover covered in natural regeneration, the hunting opportunities are optimal. The road system throughout the property leads you to four food plots ready for bush hogging and planting! There is power at the road and 400 feet of road frontage on Q D Smith Road in Silver Creek, which could also be a great place to build that dream home or camp! Located less than ten miles from Hwy 84. Call Konner today to schedule a viewing!

Directions from the intersection of Hwy 84 E and MS-43A in Silver Creek, MS: Turn right onto MS-43A. Travel 3.2 miles and turn left onto E St. Stephens Road. Travel 0.7 miles and turn right onto Rose Hill Road. Travel 2.4 miles and turn left onto Garrett Road. Travel 0.3 miles and turn left onto Q D Smith Lane. Travel 0.2 miles and turn right to stay on Q D Smith Lane. The property will be on your left in 0.1 mile.



Call me today!

KONNER BURKE, REALTOR®
Konner@TomSmithLand.com
601.990.5070 office | 601.757.4447 cell



Expect More. Get More.

TomSmithLandandHomes.com

Information is believed to be accurate but not guaranteed.



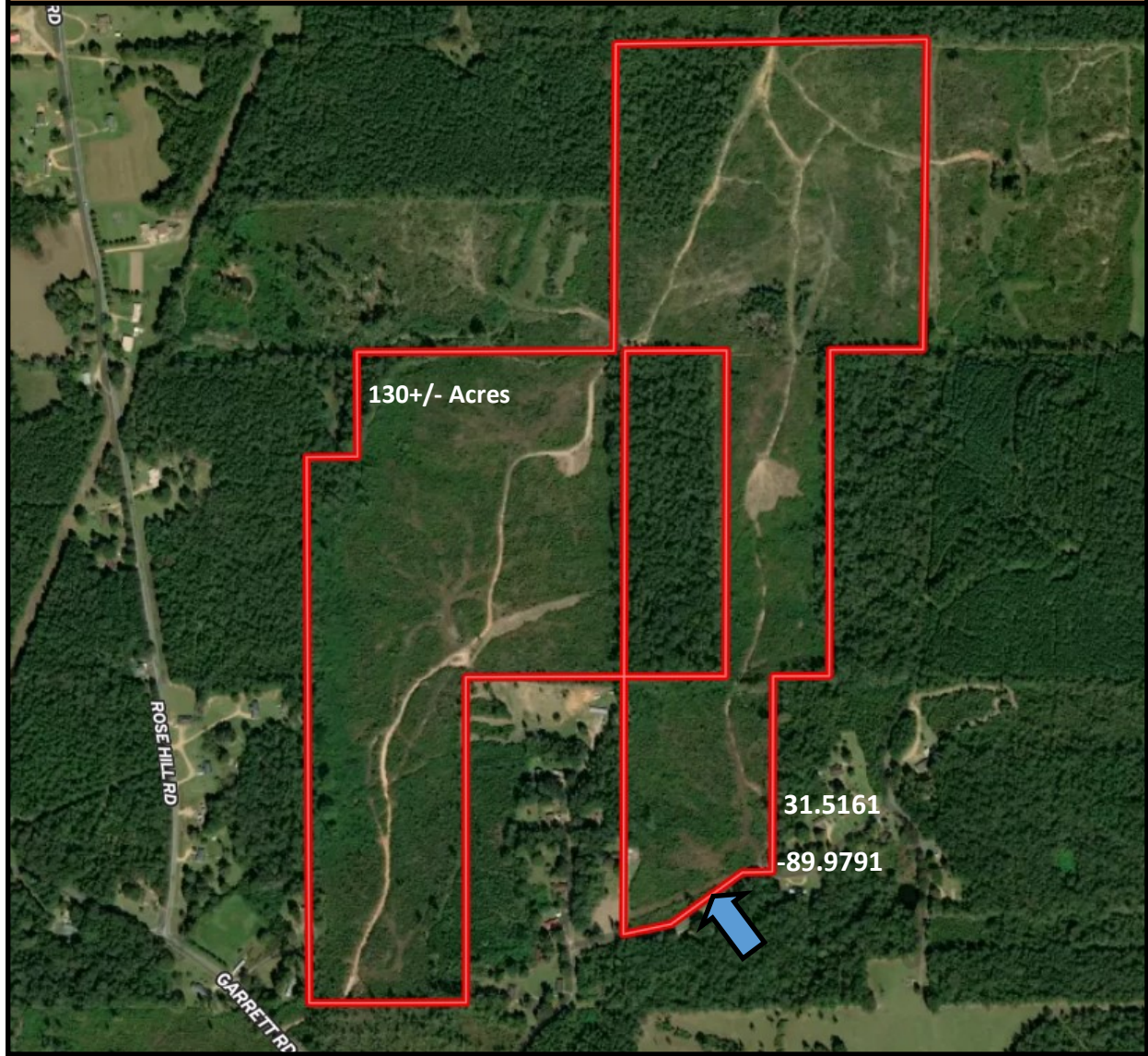
KONNER BURKE, REALTOR®
Konner@TomSmithLand.com
601.990.5070 office | 601.757.4447 cell



TomSmithLandandHomes.com

Information is believed to be accurate but not guaranteed.

Aerial Map



[Click for Interactive Map](#)



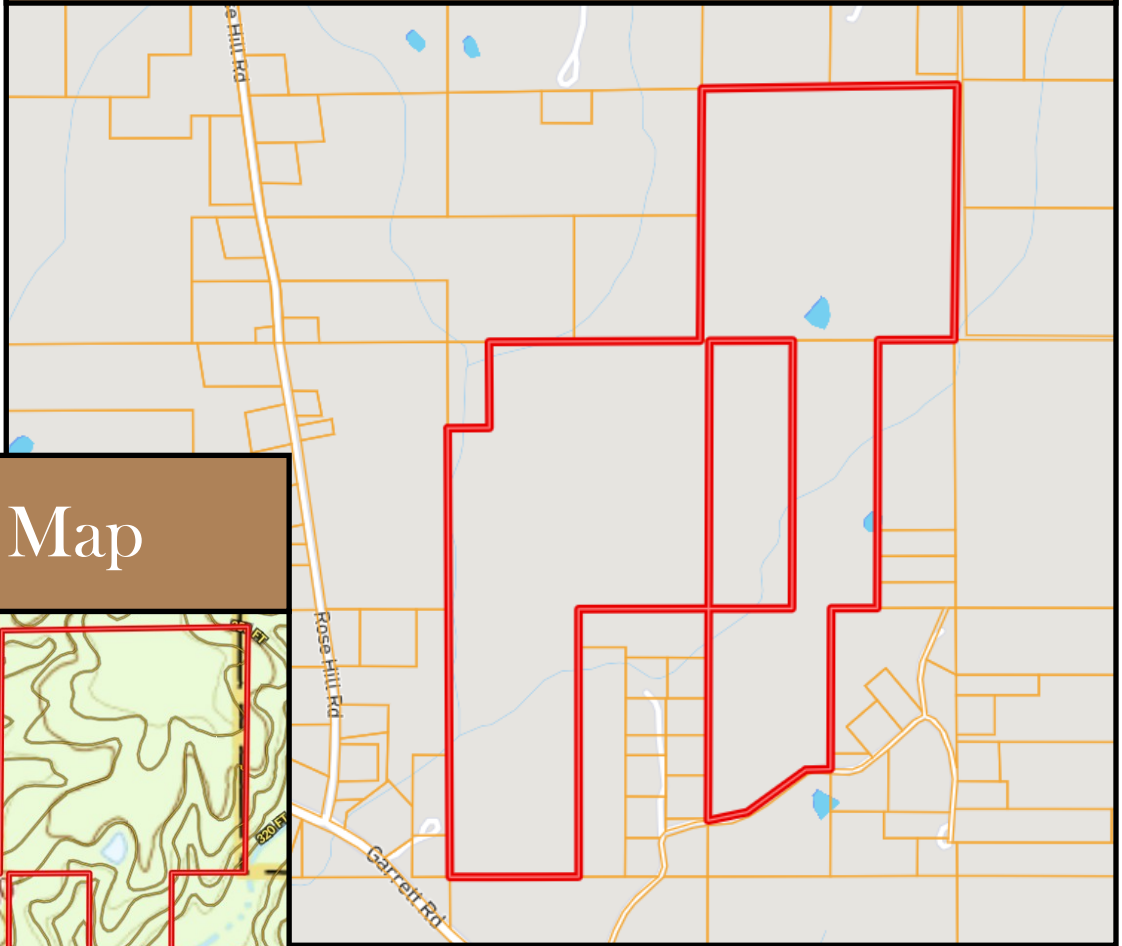
KONNER BURKE, REALTOR®
Konner@TomSmithLand.com
601.990.5070 office | 601.757.4447 cell



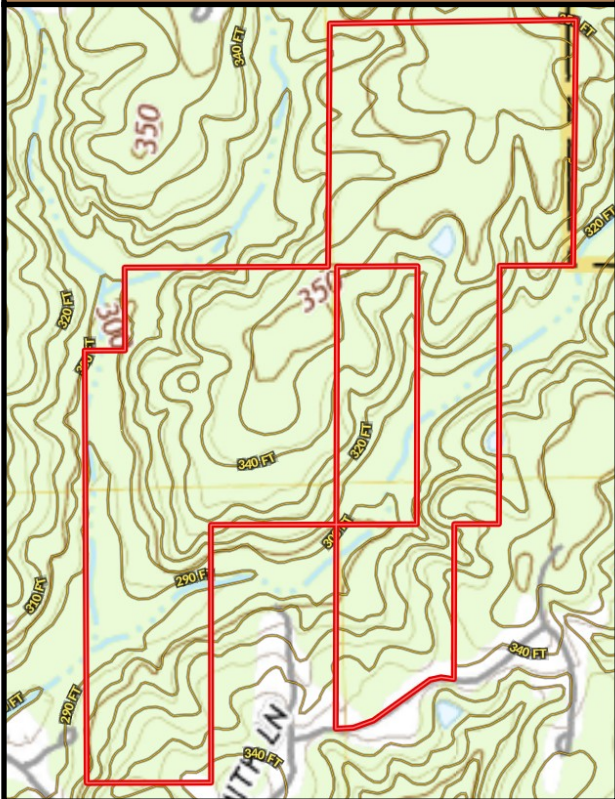
TomSmithLandandHomes.com

Information is believed to be accurate but not guaranteed.

Ownership Map



Topo Map



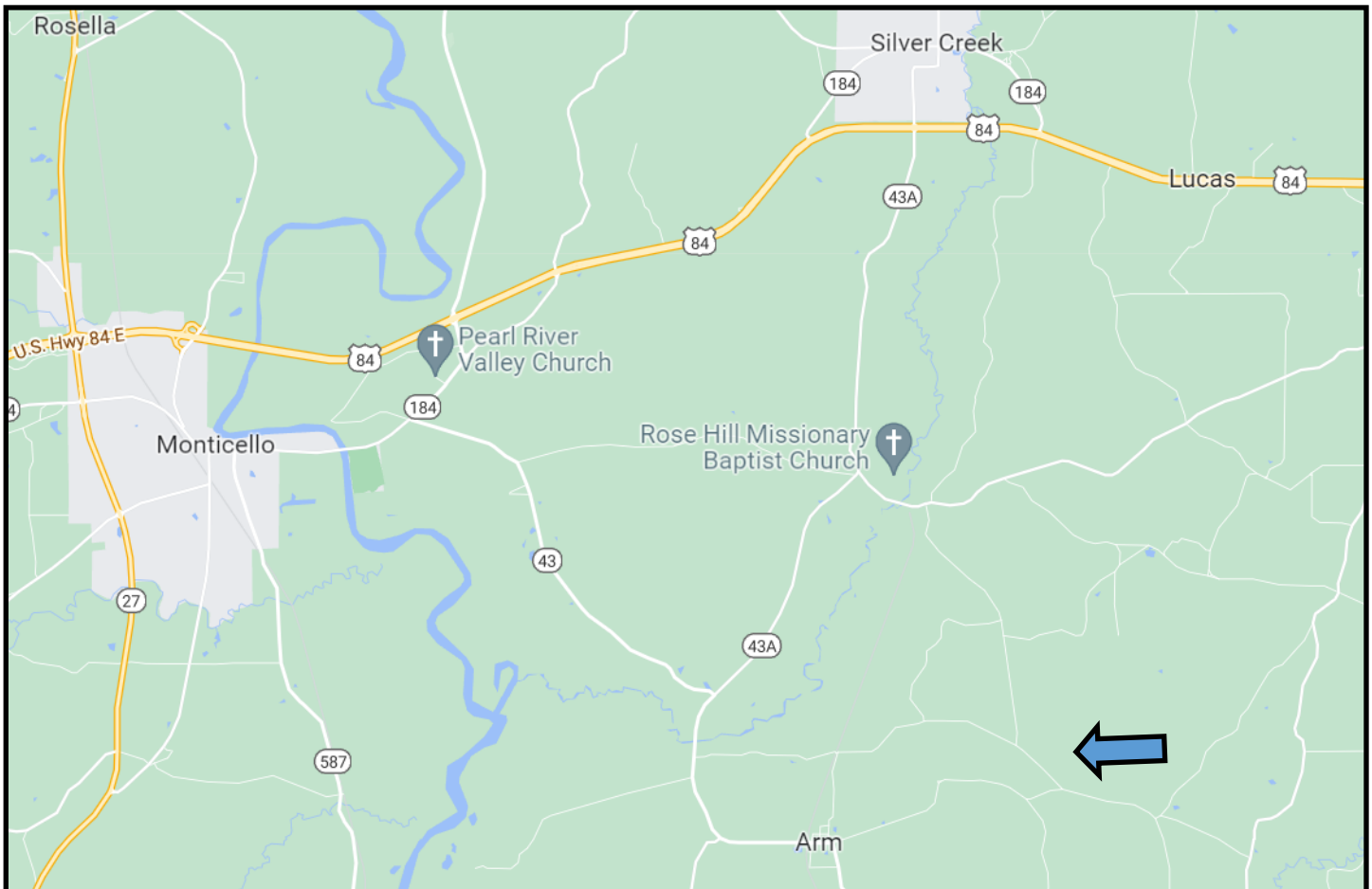
KONNER BURKE, REALTOR®
Konner@TomSmithLand.com
601.990.5070 office | 601.757.4447 cell



Expect More. Get More.

TomSmithLandandHomes.com

Information is believed to be accurate but not guaranteed.



Directional Map



Directions from the intersection of Hwy 84 E and MS-43A in Silver Creek, MS: Turn right onto MS-43A. Travel 3.2 miles and turn left onto E St. Stephens Road. Travel 0.7 miles and turn right onto Rose Hill Road. Travel 2.4 miles and turn left onto Garrett Road. Travel 0.3 miles and turn left onto Q D Smith Lane. Travel 0.2 miles and turn right to stay on Q D Smith Lane. The property will be on your left in 0.1 mile.



Call me today!

KONNER BURKE, REALTOR®
 Konner@TomSmithLand.com
 601.990.5070 office | 601.757.4447 cell



Expect More. Get More.

TomSmithLandandHomes.com

Information is believed to be accurate but not guaranteed.