

Residential Lot in Clay County, MS

Offered at \$15,000



Lot 4 Block 86 Ward 4, Jones St. West Point, MS

Have you been looking for a place to build in West Point, MS? Zoned R-1M, this .51+/- acre, 104x216 lot is the perfect place to build your new home or rental property. This was an old homesite and utilities available are on Jones St, this blank canvas is ready for any investor to build on! Conveniently located in the heart of town, access to MS-45 and MS-50 has never been easier. For more information or to schedule a showing, Call John DelPapa or Kim Martinez today!

Directions from the intersection of MS-45 & MS-50 in West Point, MS: Travel south on MS-45 for 0.7 miles. Turn left on W Brame Ave and travel 0.4 miles. Turn left on Griffin St and travel 500 feet. Turn right on Jones St and travel 400 feet; the property will be on the right.



JOHN DELPAPA, REALTOR®
John@TomSmithLand.com
662.268.6333 office | 662.788.2455 cell



Expect More. Get More.
Call us today!



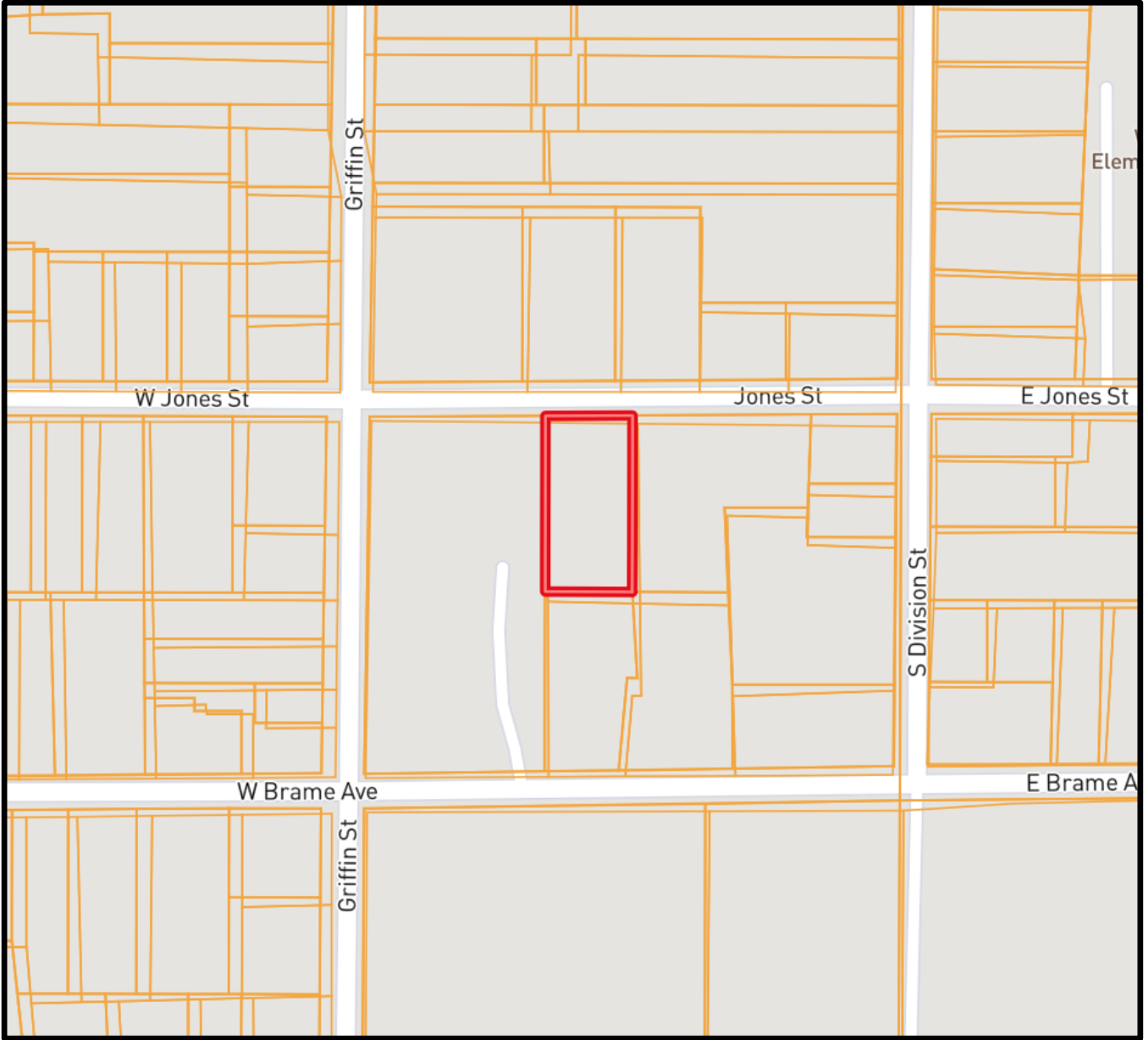
KIM MARTINEZ, REALTOR®
Kim@TomSmithHomes.com
662.268.6333 office | 662.435.4046 cell

TomSmithLandandHomes.com

Information is believed to be accurate but not guaranteed.



Ownership Map



JOHN DELPAPA, REALTOR®
 John@TomSmithLand.com
 662.268.6333 office | 662.788.2455 cell



Call us today!



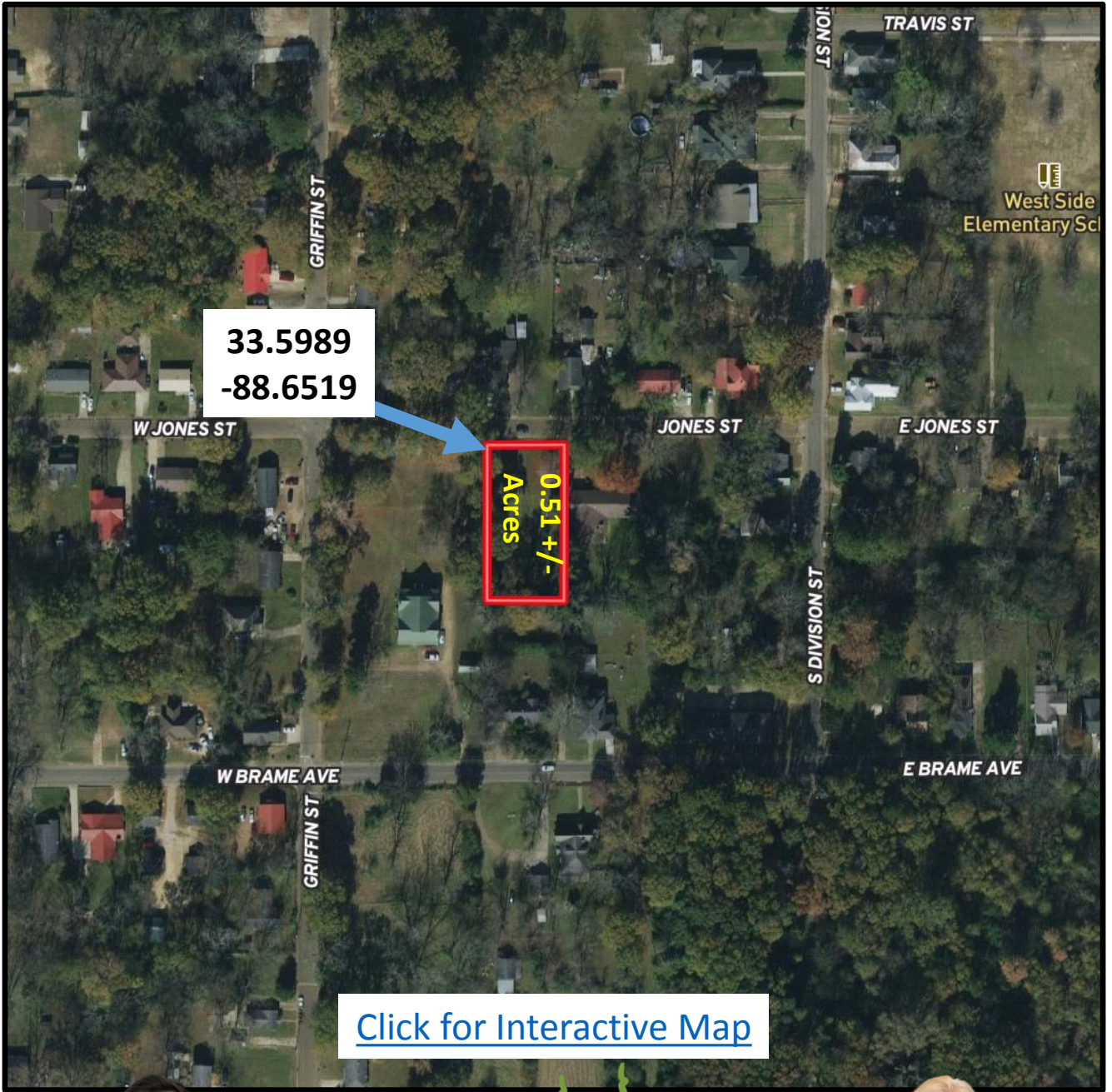
KIM MARTINEZ, REALTOR®
 Kim@TomSmithHomes.com
 662.268.6333 office | 662.435.4046 cell

TomSmithLandandHomes.com

Information is believed to be accurate but not guaranteed.



Aerial Map



JOHN DELPAPA, REALTOR®
John@TomSmithLand.com
662.268.6333 office | 662.788.2455 cell



Expect More. Get More.

Call us today!



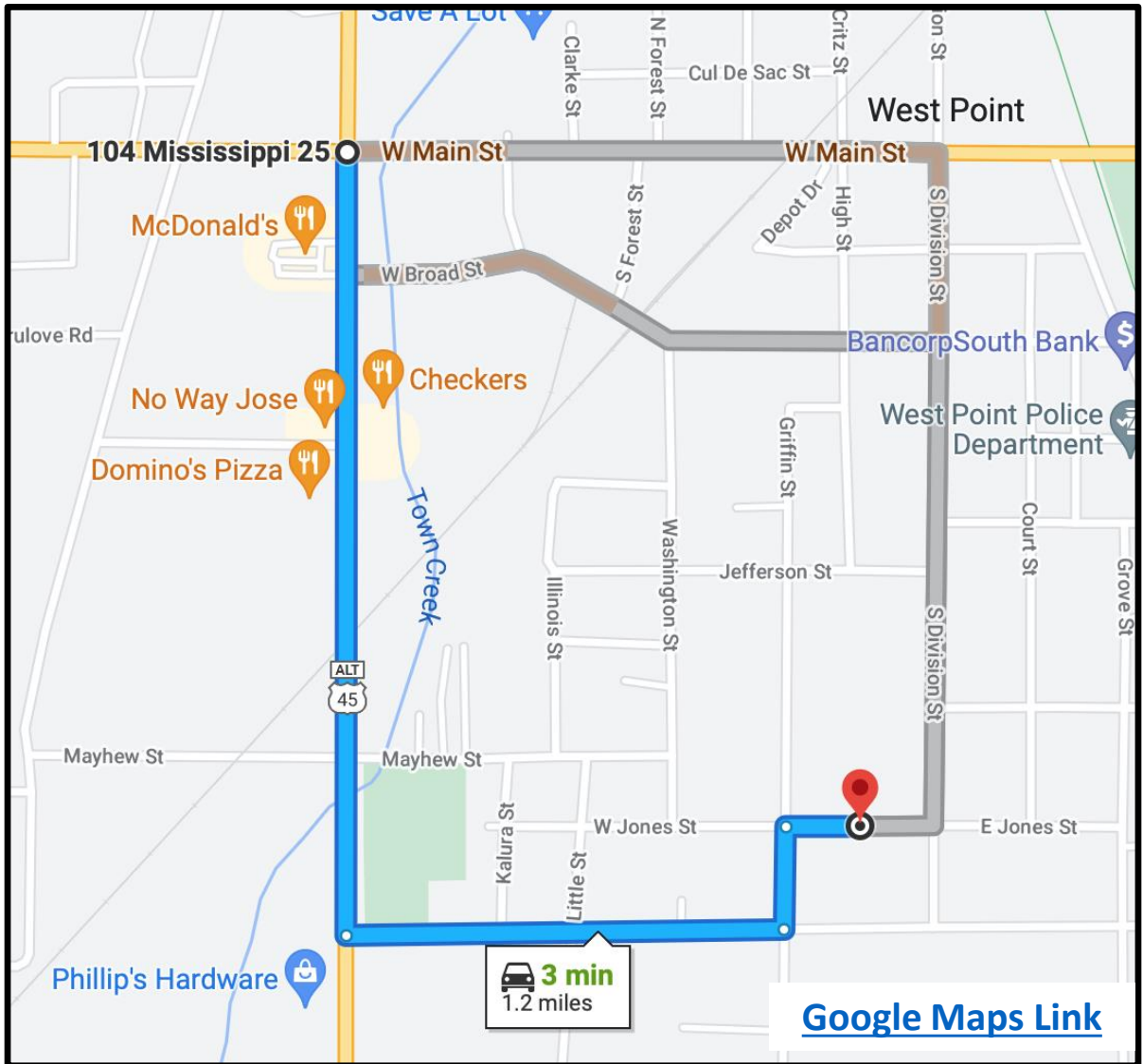
KIM MARTINEZ, REALTOR®
Kim@TomSmithHomes.com
662.268.6333 office | 662.435.4046 cell

TomSmithLandandHomes.com

Information is believed to be accurate but not guaranteed.



Directional Map



Directions from the intersection of MS-45 & MS-50 in West Point, MS Travel south on MS-45 for 0.7 miles. Turn left on W Brame Ave and travel 0.4 miles. Turn left on Griffin St and travel 500 feet. Turn right on Jones St and travel 400 feet; the property will be on the right.



JOHN DELPAPA, REALTOR®
John@TomSmithLand.com
662.268.6333 office | 662.788.2455 cell



Expect More. Get More.

Call us today!



KIM MARTINEZ, REALTOR®
Kim@TomSmithHomes.com
662.268.6333 office | 662.435.4046 cell

TomSmithLandandHomes.com

Information is believed to be accurate but not guaranteed.

