

# Quaint Home on .37+/- Acres Washington Parish, LA



1014 Webb St, Franklinton LA, 70438

Are you looking for a home in Franklinton, Louisiana? This three bed, two bath home is located in a quiet neighborhood. With a small amount of TLC, this home has the potential to make an excellent starter home or small home for empty nesters looking to downsize. You will find an open concept living/kitchen area when entering the front door. The split floor plan puts the main bedroom on one side of the home, while two additional bedrooms are on the opposite side. The backyard features a partial wooden fence for privacy and security. With a short drive into town, all amenities are close by. Call Chris Wolff or Blake Sasser to view this home today!

Directions from Intersection of Main St/Washington St in Franklinton: Travel east on Washington St. for 1.2 miles. Turn right onto Wood Rd. In 500 feet, turn left onto Hamilton St. In another 500 feet turn right onto Bruce St. Turn right onto Webb St in .3 miles, and the house will be on the right.

Address: 1014 Webb St, Franklinton LA, 70438



**BLAKE SASSER**, REALTOR®  
Blake@TomSmithLand.com  
601.990.5070 office | 601.757.5027 cell



*Call us today!*



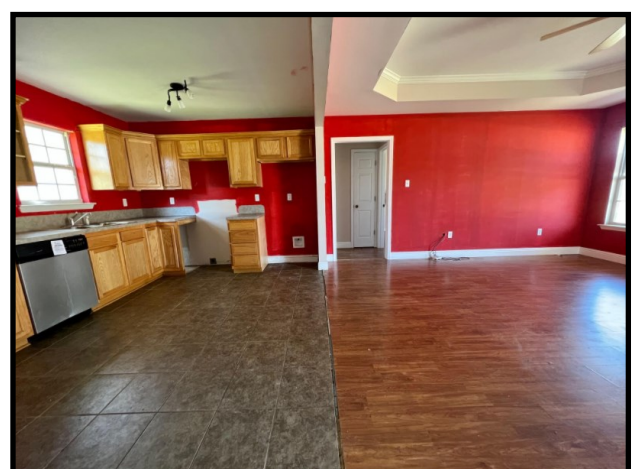
**CHRIS WOLFF**, REALTOR®  
CWolff@TomSmithLand.com  
601.990.5070 office | 601.757.7968 cell

**TomSmithLandandHomes.com**

Information is believed to be accurate but not guaranteed.







**BLAKE SASSER, REALTOR®**  
Blake@TomSmithLand.com  
601.990.5070 office | 601.757.5027 cell



Expect More. Get More.

*Call us today!*



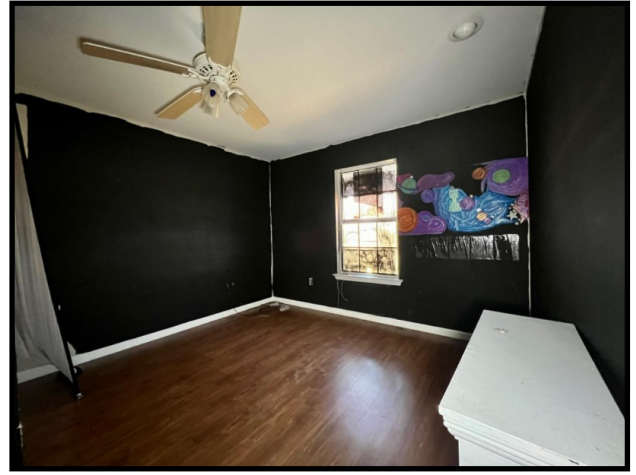
**CHRIS WOLFE, REALTOR®**  
CWolff@TomSmithLand.com  
601.990.5070 office | 601.757.7968 cell

**TomSmithLandandHomes.com**

Information is believed to be accurate but not guaranteed.







**BLAKE SASSER**, REALTOR®  
Blake@TomSmithLand.com  
601.990.5070 office | 601.757.5027 cell



Expect More. Get More.

*Call us today!*

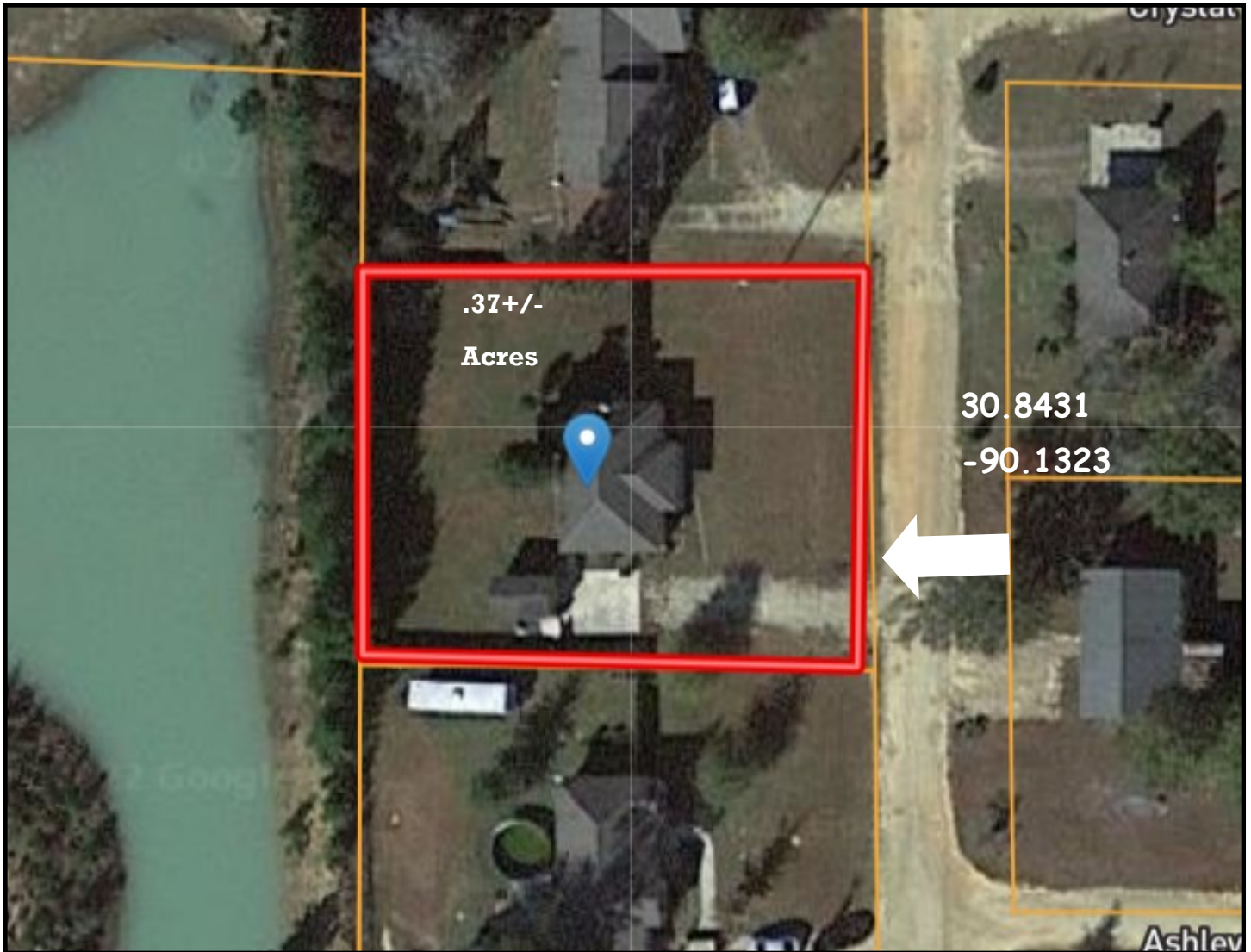


**CHRIS WOLFE**, REALTOR®  
CWolff@TomSmithLand.com  
601.990.5070 office | 601.757.7968 cell

**TomSmithLandandHomes.com**

Information is believed to be accurate but not guaranteed.





## Aerial Map

[Interactive Map](#)



**BLAKE SASSER**, REALTOR®  
 Blake@TomSmithLand.com  
 601.990.5070 office | 601.757.5027 cell



Expect More. Get More.

*Call us today!*

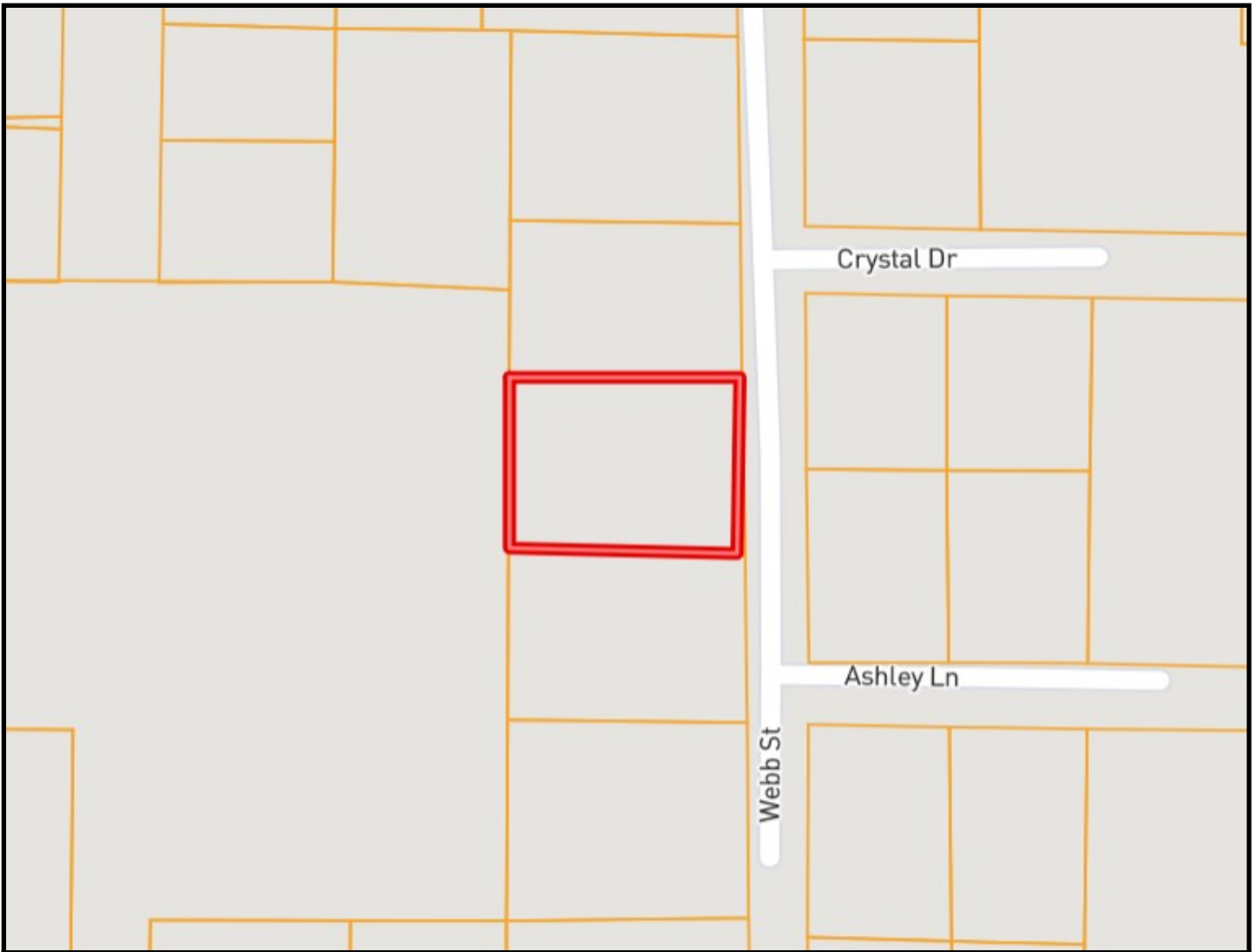


**CHRIS WOLFE**, REALTOR®  
 CWolff@TomSmithLand.com  
 601.990.5070 office | 601.757.7968 cell

**TomSmithLandandHomes.com**

Information is believed to be accurate but not guaranteed.





# Ownership Map



**BLAKE SASSER**, REALTOR®  
Blake@TomSmithLand.com  
601.990.5070 office | 601.757.5027 cell

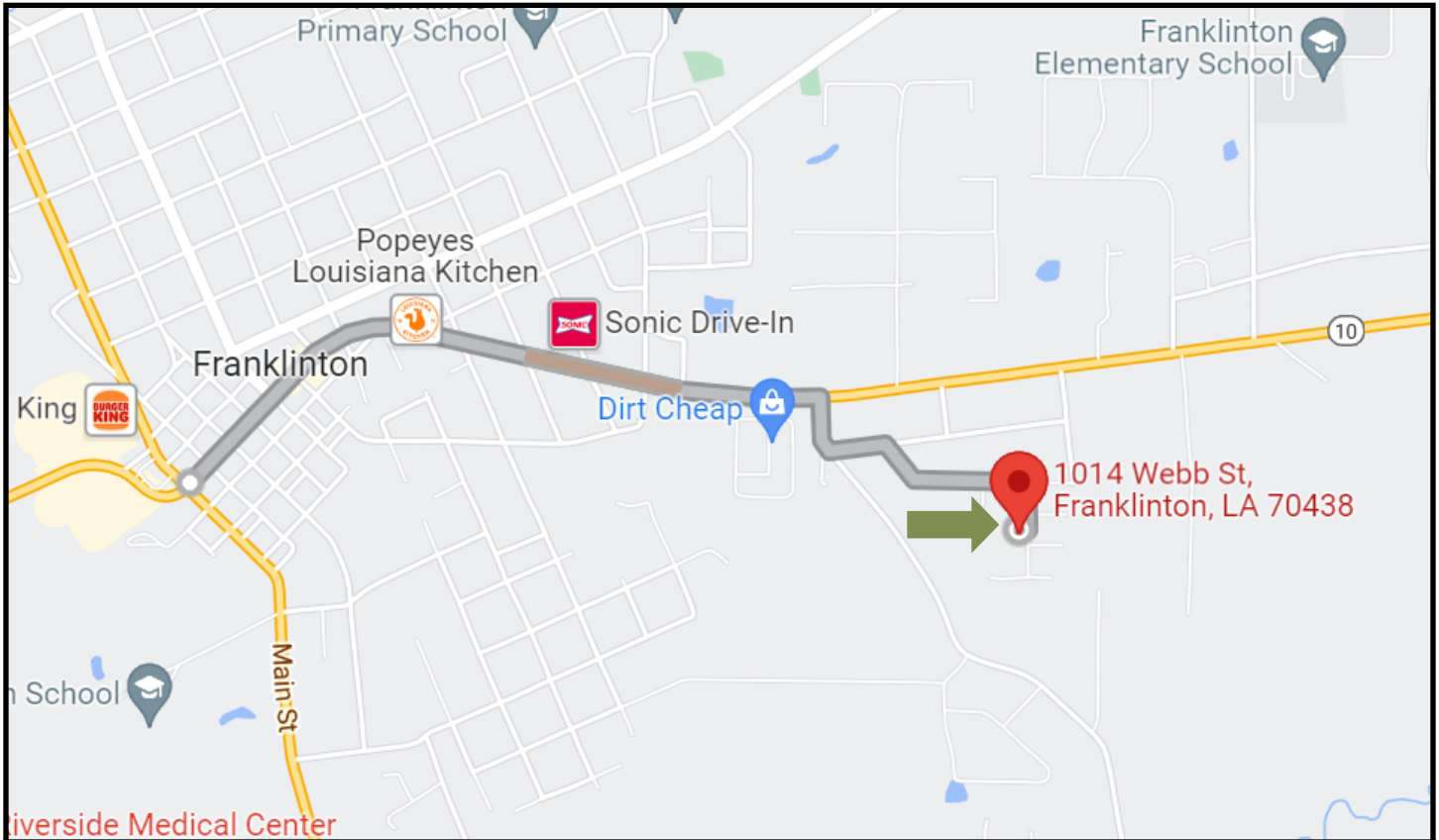


*Call us today!*



**CHRIS WOLFE**, REALTOR®  
CWolff@TomSmithLand.com  
601.990.5070 office | 601.757.7968 cell





# Directional Map

**1014 Webb St Franklinton LA, 70348**

Directions from Intersection of Main St/Washington St in Franklinton: Travel east on Washington St. for 1.2 miles. Turn right onto Wood Rd. In 500 feet, turn left onto Hamilton St. In another 500 feet turn right onto Bruce St. Turn right onto Webb St in .3 miles, and the house will be on the right.

[Click here for google maps!](#)



**BLAKE SASSER**, REALTOR®  
 Blake@TomSmithLand.com  
 601.990.5070 office | 601.757.5027 cell



*Call us today!*



**CHRIS WOLFE**, REALTOR®  
 CWolff@TomSmithLand.com  
 601.990.5070 office | 601.757.7968 cell