

# 24 Unit Apartment Complex

## Sunflower County, MS



**502 Dorsett Drive Indianola, MS 38751**

**\$1,375,000**

This 24 Unit Apartment Complex at Oak Manor in Indianola, MS, located in the heart of the Delta, is primed and ready to go to work for you! Each of the two buildings consist of four one bedroom units currently renting for \$625 and eight two bedroom units renting for \$775. Recently renovated down to the studs of each unit, this property offers all the amenities your tenants will love, from stainless steel appliances, granite, and concrete countertops, brand new walls, tile floors, and completely new HVAC equipment. There is no other property in this condition in the area. The demand for rental units in Indianola is extremely high, and the quality supply is almost nonexistent. Crank this cash flow machine up and let it get to work! Call me today for your private showing!

**Directions from the intersection of Hwy 82 and Hwy 49 Indianola, MS:** Travel west on Hwy 82 for 0.3 miles, turn right onto Academy Drive, in 0.2 miles turn left onto Dorsett Drive and in 0.2 miles the destination is on the left. Address: 502 Dorsett Drive Indianola, MS 38751



*Call me today!*

**EMERSON LOVELACE**, REALTOR®  
Emerson@TomSmithLand.com  
662.441.2500 office | 601.715.3302 cell



**TomSmithLandandHomes.com**

Information is believed to be accurate but not guaranteed.





*Call me today!*

**EMERSON LOVELACE**, REALTOR®  
Emerson@TomSmithLand.com  
662.441.2500 office | 601.715.3302 cell



**TomSmithLandandHomes.com**

Information is believed to be accurate but not guaranteed.





*Call me today!*



LandReport  
2010-2021  
AMERICA'S  
BEST  
BROKERAGES

Tom  
Smith  
LAND AND  
HOMES  
Expect More. Get More.

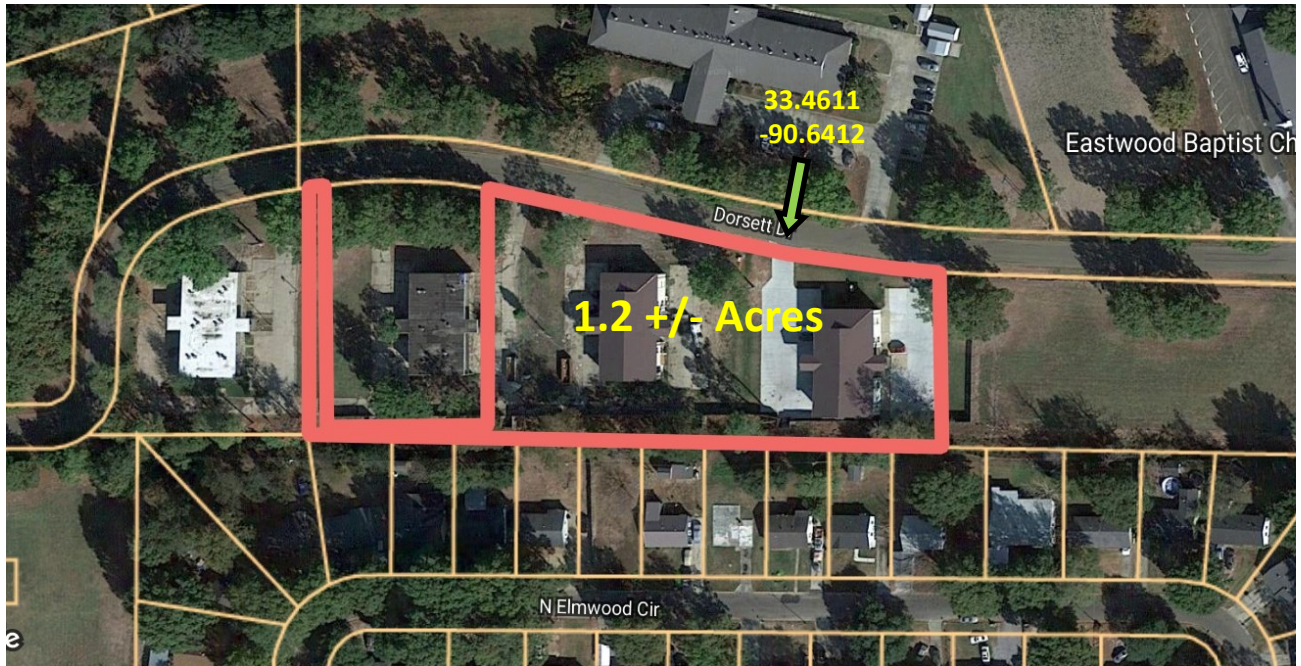
**EMERSON LOVELACE**, REALTOR®  
Emerson@TomSmithLand.com  
662.441.2500 office | 601.715.3302 cell

**Tom  
Smith  
LAND AND  
HOMES**  
Expect More. Get More.

**TomSmithLandandHomes.com**

Information is believed to be accurate but not guaranteed.

# AERIAL MAP



[Click for Interactive Map](#)

# OWNERSHIP MAP



**EMERSON LOVELACE**, REALTOR®  
Emerson@TomSmithLand.com  
662.441.2500 office | 601.715.3302 cell

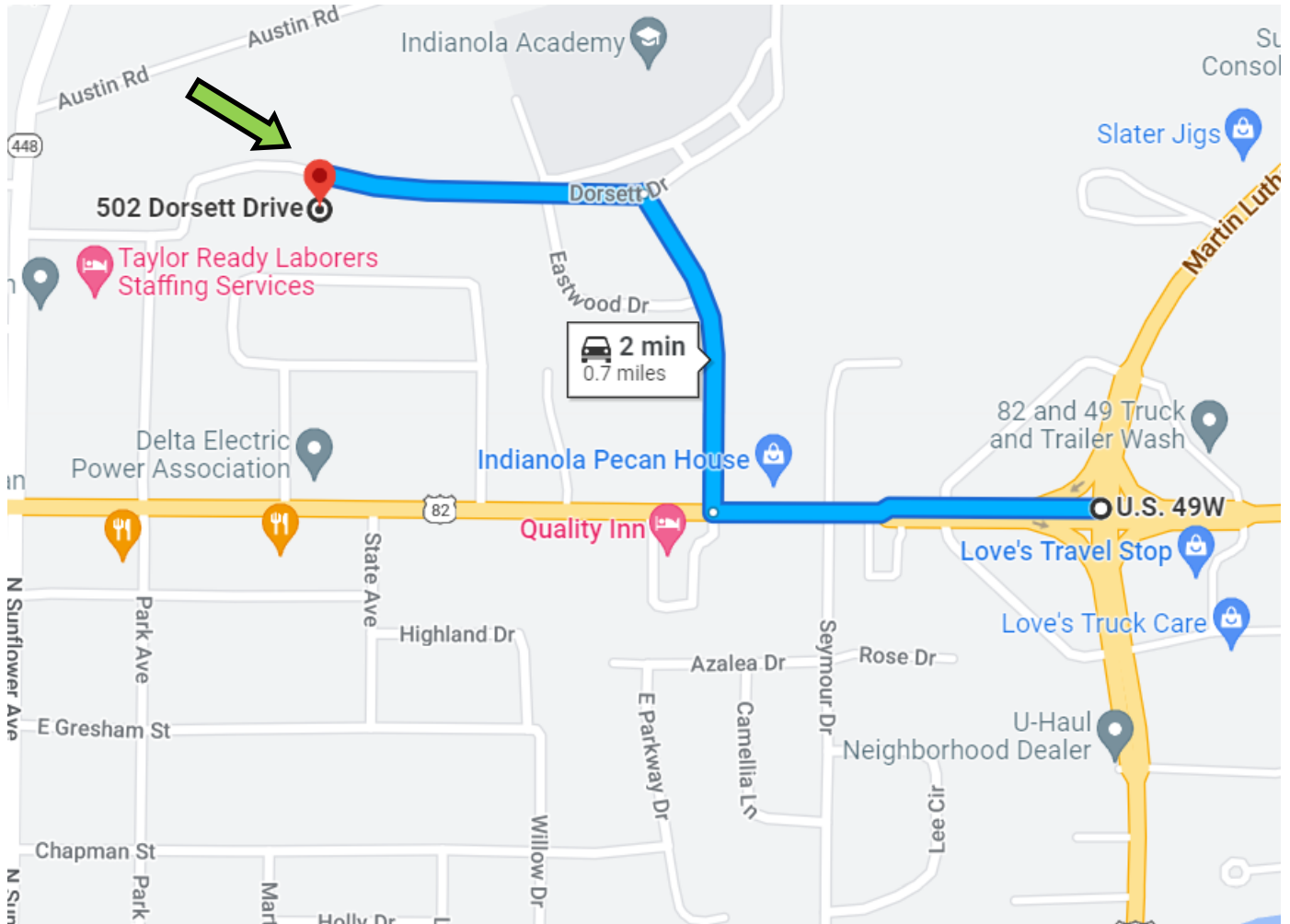


[TomSmithLandandHomes.com](http://TomSmithLandandHomes.com)

Information is believed to be accurate but not guaranteed.



# DIRECTIONAL MAP



## 502 Dorsett Drive Indianola, MS 38751

**Directions from the intersection of Hwy 82 and Hwy 49 Indianola, MS:** Travel west on Hwy 82 for 0.3 miles, turn right onto Academy Drive, in 0.2 miles turn left onto Dorsett Drive and in 0.2 miles the destination is on the left. Address: 502 Dorsett Drive Indianola, MS 38751



*call me today!*

**EMERSON LOVELACE**, REALTOR®  
Emerson@TomSmithLand.com  
662.441.2500 office | 601.715.3302 cell



**TomSmithLandandHomes.com**

Information is believed to be accurate but not guaranteed.