

# 1.2 Acres of Highway Frontage

## Sunflower County, MS



1336 Highway 82 East Indianola, MS 38751

\$125,000

The 82 East Garage has been a presence on the east end of Indianola for years. Positioned just on the outskirts of town, this 5,400 sq/ft shop and acreage serve as the perfect location for a similar business to come in and operate immediately or cleaned up for a fresh start. With the property less than a 1/4 mile from the Highway 49 and 82 intersection this property is primed and ready to go. Call me today for a highway front showing!

**Directions from the intersection of Hwy 82 and Hwy 49 Indianola, MS:** Travel south on Hwy 82 East for approximately 0.4 miles and the destination is on the right.



*Call me today!*

**EMERSON LOVELACE**, REALTOR®  
Emerson@TomSmithLand.com  
662.441.2500 office | 601.715.3302 cell



**TomSmithLandandHomes.com**

Information is believed to be accurate but not guaranteed.



LandReport  
2010-2021  
AMERICA'S  
BEST  
BROKERAGES

*Call me today!*

**EMERSON LOVELACE**, REALTOR®  
Emerson@TomSmithLand.com  
662.441.2500 office | 601.715.3302 cell



**TomSmithLandandHomes.com**

Information is believed to be accurate but not guaranteed.

# OWNERSHIP MAP



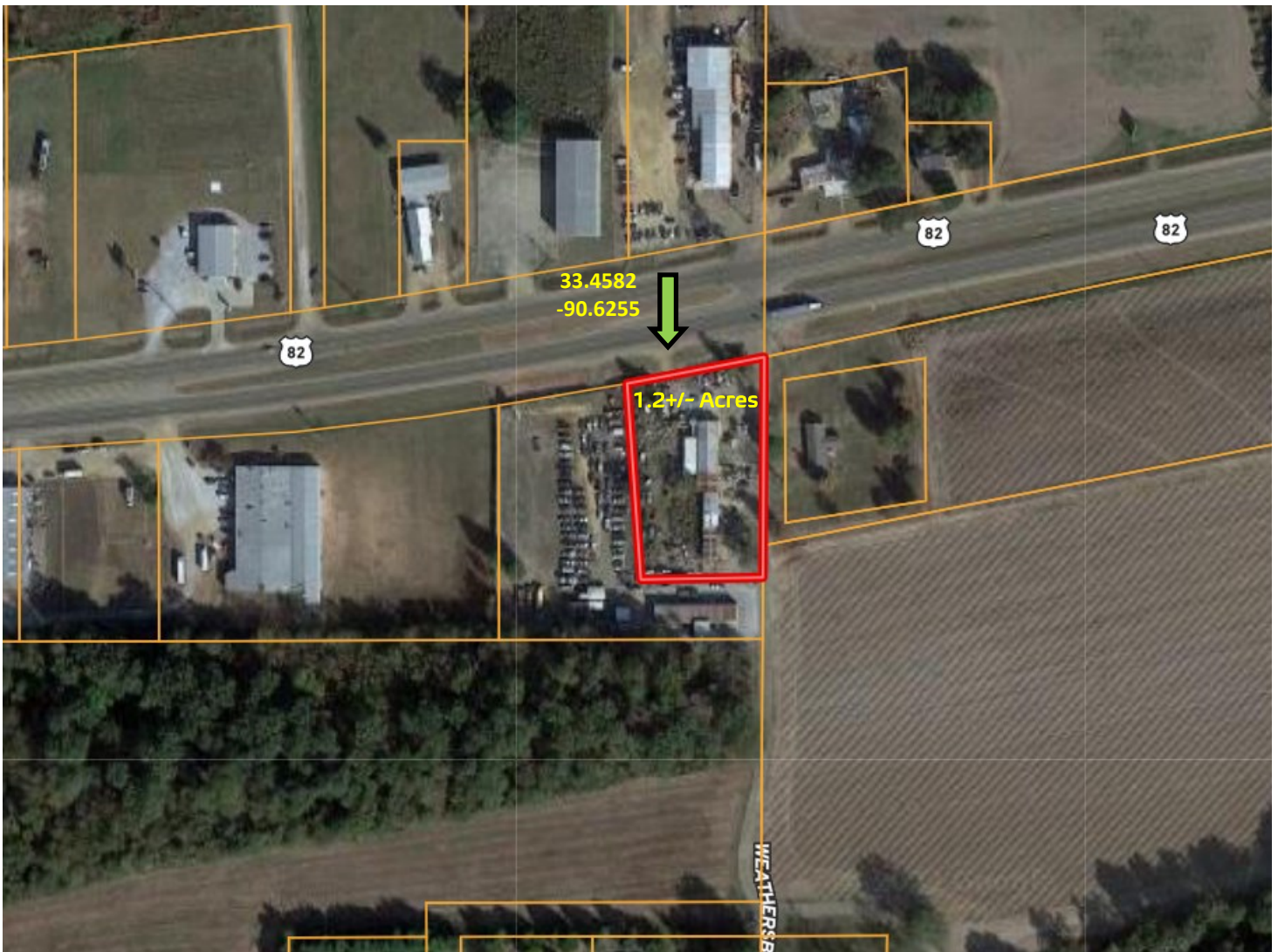
**EMERSON LOVELACE**, REALTOR®  
Emerson@TomSmithLand.com  
662.441.2500 office | 601.715.3302 cell



**TomSmithLandandHomes.com**

Information is believed to be accurate but not guaranteed.

# AERIAL MAP



[Click for Interactive Map](#)



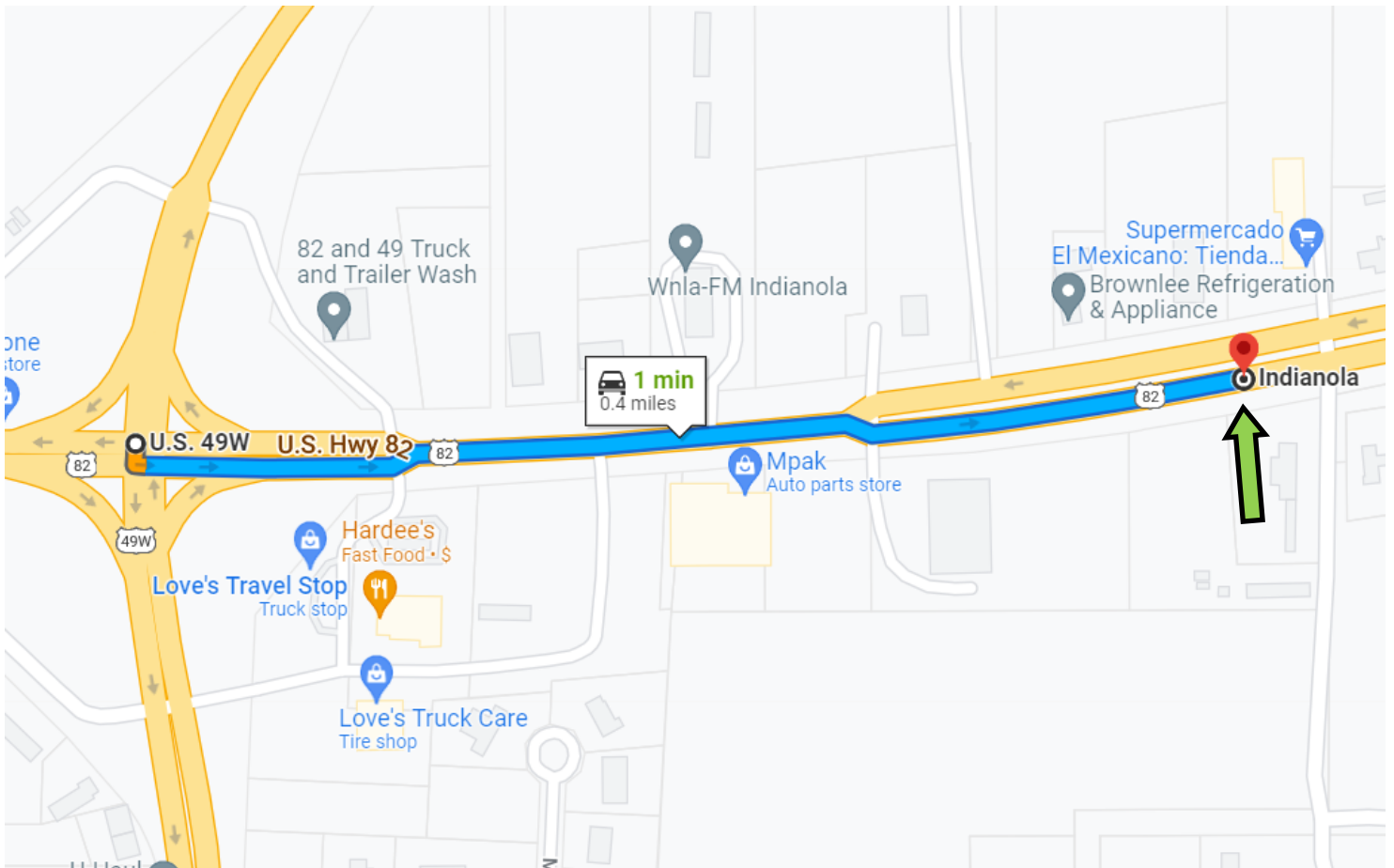
**EMERSON LOVELACE**, REALTOR®  
Emerson@TomSmithLand.com  
662.441.2500 office | 601.715.3302 cell



[TomSmithLandandHomes.com](http://TomSmithLandandHomes.com)

Information is believed to be accurate but not guaranteed.

# DIRECTIONAL MAP



1336 Highway 82 East Indianola, MS 38751

Directions from the intersection of Hwy 82 and Hwy 49 Indianola, MS: Travel south on Hwy 82 East for approximately 0.4 miles and the destination is on the right.



*Call me today!*

**EMERSON LOVELACE**, REALTOR®  
Emerson@TomSmithLand.com  
662.441.2500 office | 601.715.3302 cell



**TomSmithLandandHomes.com**

Information is believed to be accurate but not guaranteed.