

11.72± COMMERCIAL ACRES IN HINDS COUNTY, MS



\$175,000

Check out this GREAT 11.72± acre commercial lot, zoned C-3 in Jackson, MS! This property has approximately 1,800± feet of road frontage on Livingston Road and Stonewall Street and is located near I-55. The third side of the property borders a railroad track. This property has so much potential, with several commercial business opportunities, i.e., trucking facility, warehouse, storage units, etc. Utilities are available near the property. This property is a tax sale and is being sold AS-IS.

Directions from I-55 in Jackson, MS: Take Exit 98A toward Woodrow Wilson Dr from I-55, in .3 miles continue onto E Woodrow Wilson Ave, in 1.7 miles turn right onto Bailey Ave, in .5 miles turn left onto Market St, in .2 miles turn right onto Livingston Rd, the property will be on the right in .2 miles at the corner of Livingston Rd and Stonewall St.



Call me today!

PRESTON SMITH, MANAGING BROKER
Preston@TomSmithLand.com
601.990.5070 office | 601.209.7150 cell



TomSmithLandandHomes.com



PRESTON SMITH, MANAGING BROKER
 Preston@TomSmithLand.com
 601.990.5070 office | 601.209.7150 cell



TomSmithLandandHomes.com

Information is believed to be accurate but not guaranteed.

Aerial Map



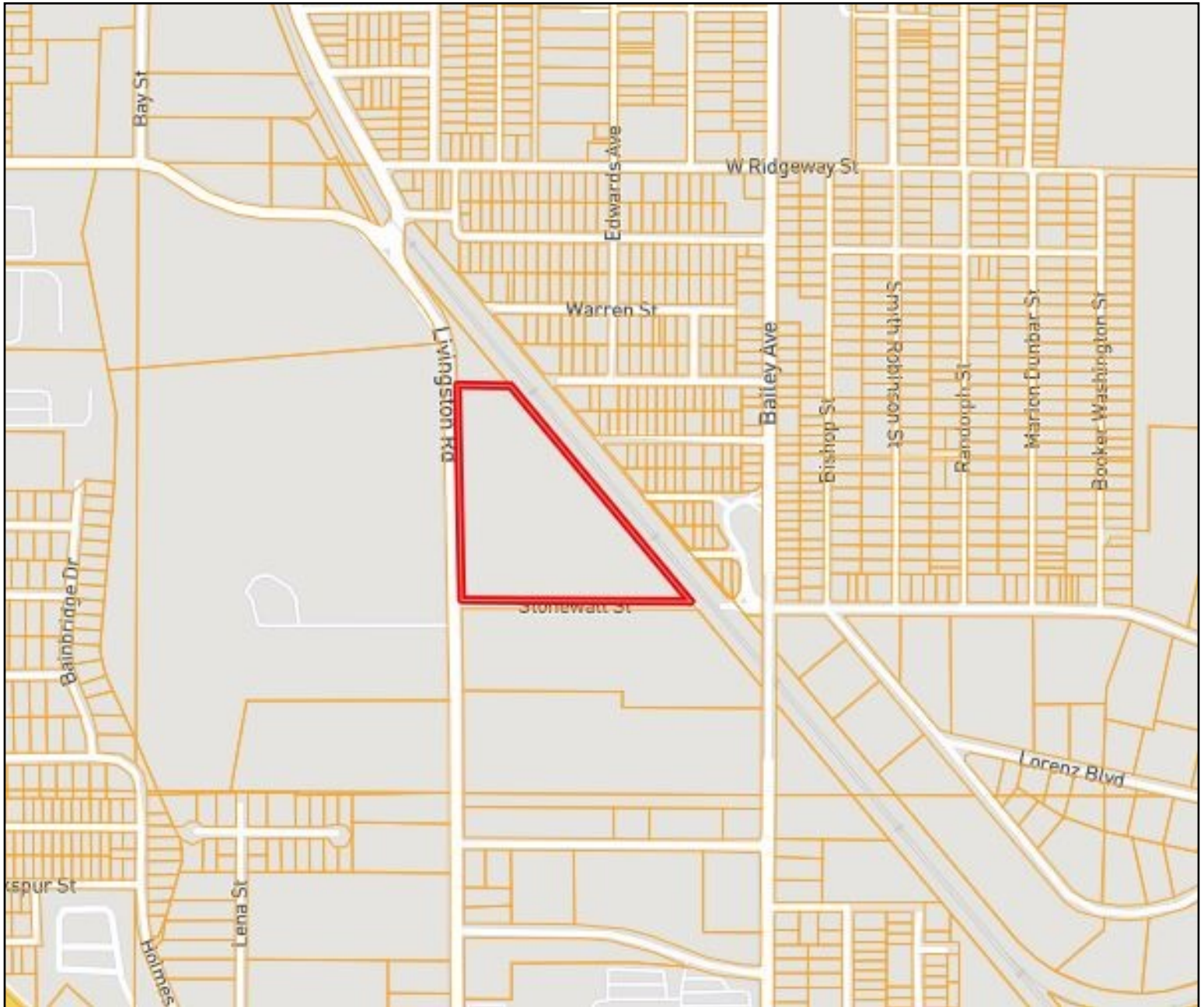
PRESTON SMITH, MANAGING BROKER
Preston@TomSmithLand.com
601.990.5070 office | 601.209.7150 cell



TomSmithLandandHomes.com

Information is believed to be accurate but not guaranteed.

Ownership Map



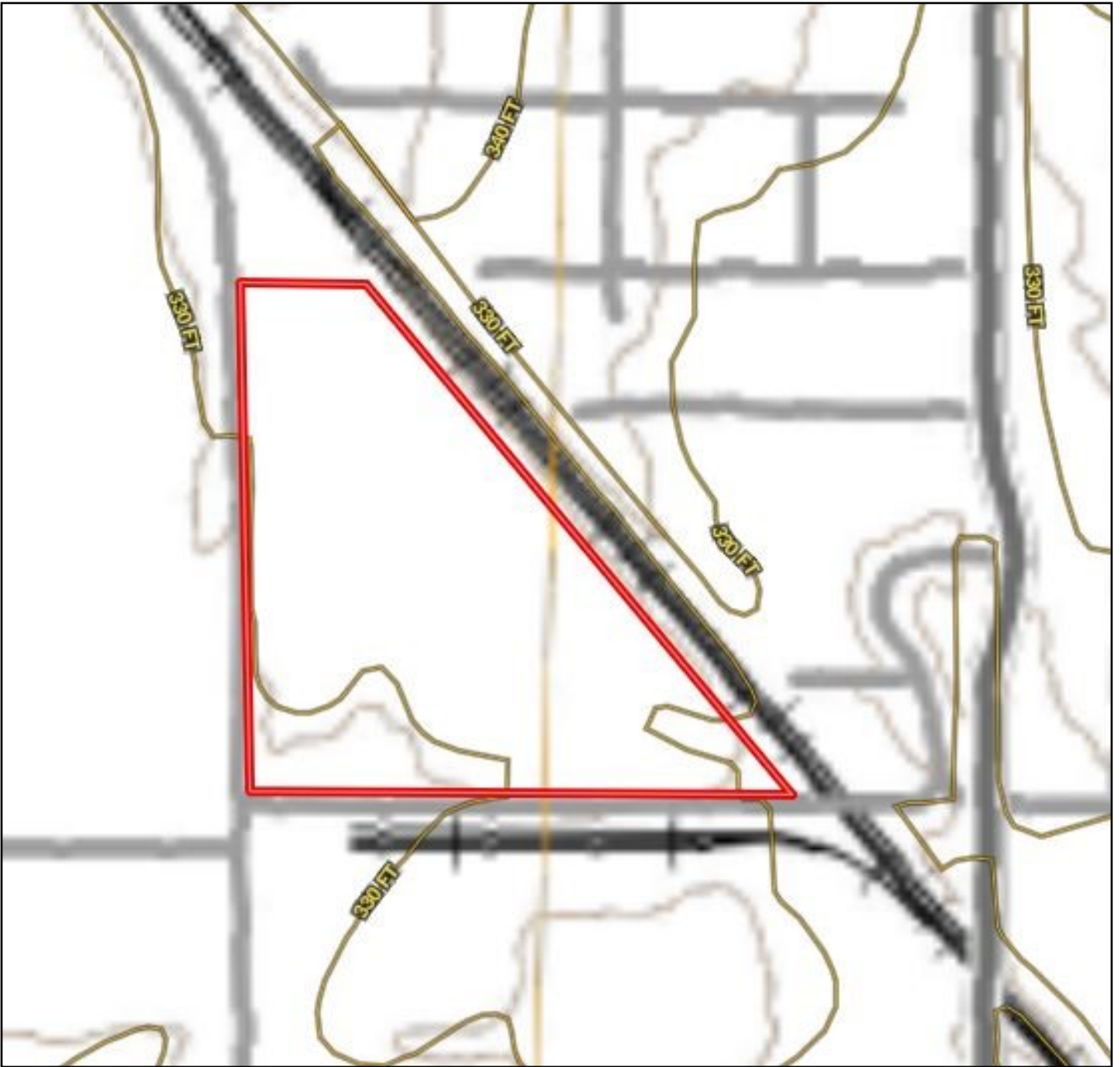
PRESTON SMITH, MANAGING BROKER
Preston@TomSmithLand.com
601.990.5070 office | 601.209.7150 cell



TomSmithLandandHomes.com

Information is believed to be accurate but not guaranteed.

Topography Map



PRESTON SMITH, MANAGING BROKER
Preston@TomSmithLand.com
601.990.5070 office | 601.209.7150 cell



TomSmithLandandHomes.com

Information is believed to be accurate but not guaranteed.

Soil Map



CODE	DESCRIPTION	ACRES	%	CPI	NCCPI	CAP
LuC	Loring-Urban land complex, 2 to 8 percent slopes	12.21	99.11%	-	27	3e
BuC	Byram-Urban land complex, 2 to 8 percent slopes	0.11	0.89%	-	31	3e

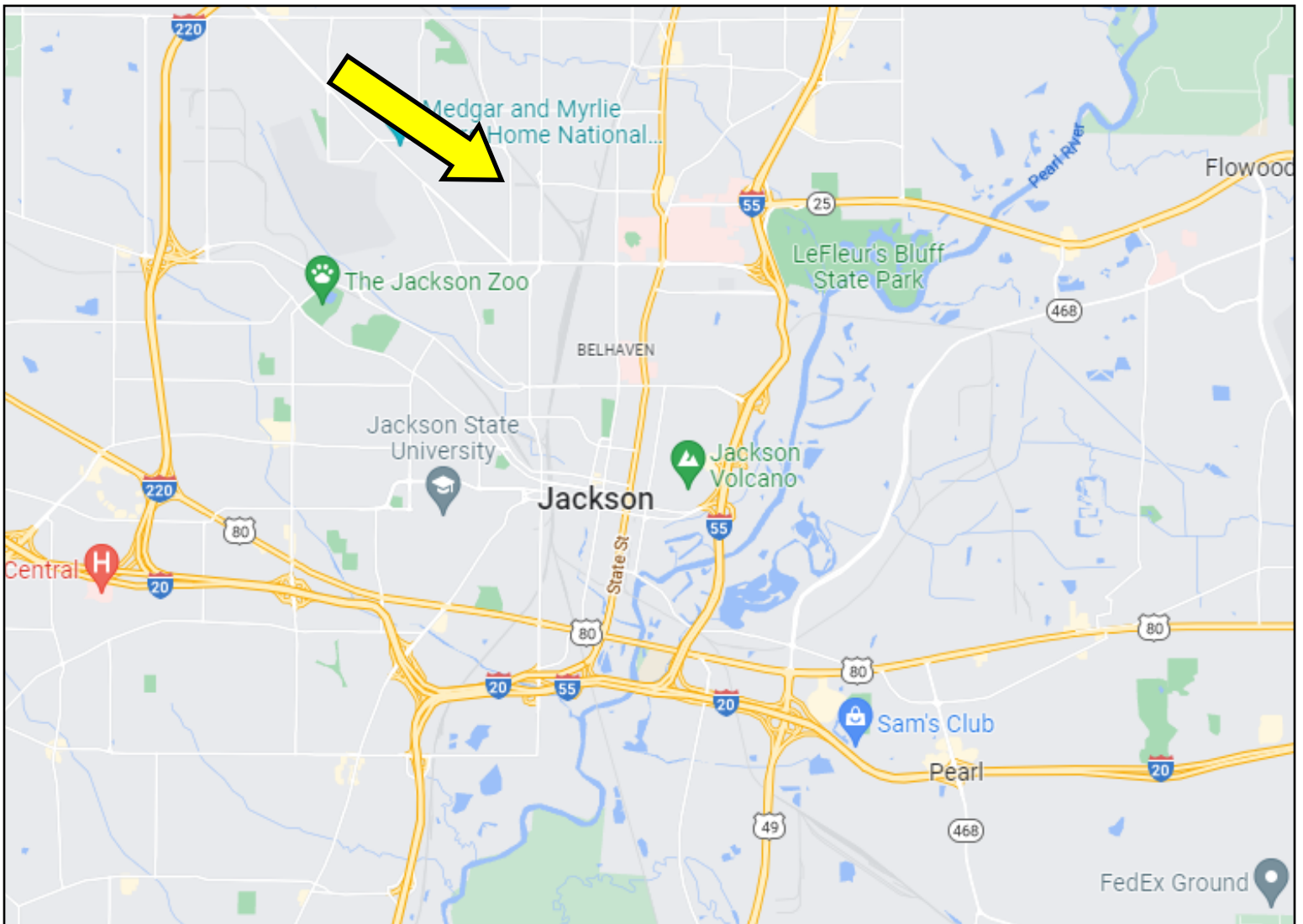


PRESTON SMITH, MANAGING BROKER
Preston@TomSmithLand.com
601.990.5070 office | 601.209.7150 cell

TomSmithLandandHomes.com

Information is believed to be accurate but not guaranteed.

Directional Map



Directions from I-55 in Jackson, MS: Take Exit 98A toward Woodrow Wilson Dr from I-55, in .3 miles continue onto E Woodrow Wilson Ave, in 1.7 miles turn right onto Bailey Ave, in .5 miles turn left onto Market St, in .2 miles turn right onto Livingston Rd, the property will be on the right in .2 miles at the corner of Livingston Rd and Stonewall St.



PRESTON SMITH, MANAGING BROKER
Preston@TomSmithLand.com
601.990.5070 office | 601.209.7150 cell



TomSmithLandandHomes.com

Information is believed to be accurate but not guaranteed.