

34+/- Acres of Farm Land Coahoma County, MS



\$220,000

This 34+/- acres of farm ground features a well and is located behind Walmart in Coahoma County, Clarksdale, MS. This land has been farmed in corn and cotton for the past couple of years and has easy access from the North or South end of the property. Call Anthony today!

Directions from the Intersection of Hwy 61 & 49 Clarksdale, MS: Travel South on Hwy 49 for approximately 21.9 miles, turn right on to MS 161 N, in 1.0 miles turn right onto Field Rd and the destination is on the right.



Call me today!

ANTHONY STEEN, REALTOR®
Anthony@TomSmithLand.com
662.441.2500 office | 662.645.5151 cell



TomSmithLandandHomes.com

Information is believed to be accurate but not guaranteed.



ANTHONY STEEN, REALTOR®
Anthony@TomSmithLand.com
662.441.2500 office | 662.645.5151 cell



TomSmithLandandHomes.com

Information is believed to be accurate but not guaranteed.



AERIAL MAP

[Click for Interactive Map](#)

ANTHONY STEEN, REALTOR®
Anthony@TomSmithLand.com
662.441.2500 office | 662.645.5151 cell

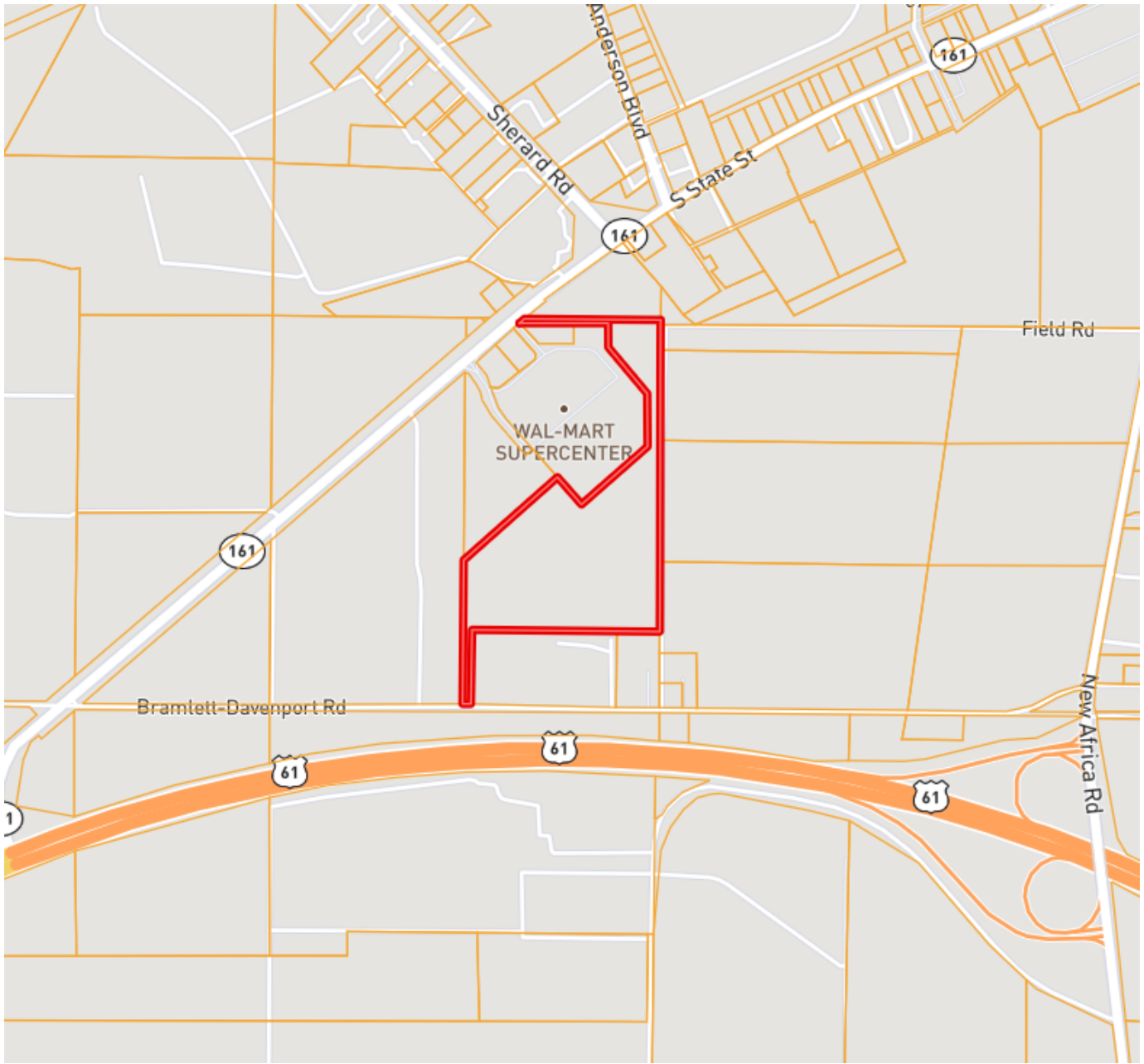


Expect More. Get More.



TomSmithLandandHomes.com

Information is believed to be accurate but not guaranteed.



OWNERSHIP MAP

ANTHONY STEEN, REALTOR®
Anthony@TomSmithLand.com
662.441.2500 office | 662.645.5151 cell



TomSmithLandandHomes.com

Information is believed to be accurate but not guaranteed.



For COMPLIANCE, unless otherwise noted:

FSA MAP

ANTHONY STEEN, REALTOR®
Anthony@TomSmithLand.com
662.441.2500 office | 662.645.5151 cell

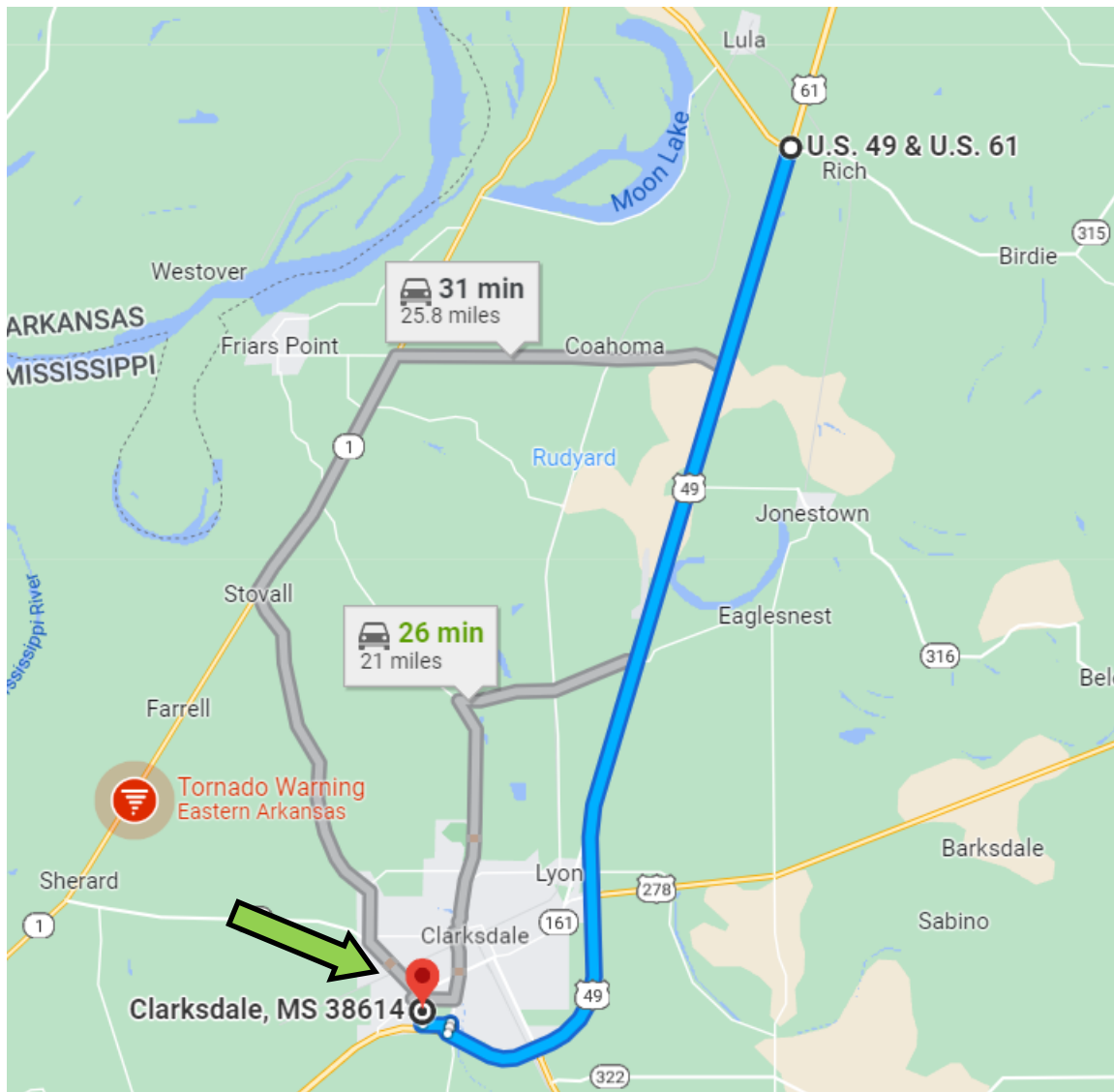


Expect More. Get More.



TomSmithLandandHomes.com

Information is believed to be accurate but not guaranteed.



DIRECTIONAL MAP

Directions from the Intersection of Hwy 61 & 49 Clarksdale, MS: Travel South on Hwy 49 for approximately 21.9 miles, turn right on to MS 161 N, in 1.0 miles turn right onto Field Rd and the destination is on the right. [Click for Google Map](#)



ANTHONY STEEN, REALTOR®
Anthony@TomSmithLand.com
662.441.2500 office | 662.645.5151 cell



TomSmithLandandHomes.com

Information is believed to be accurate but not guaranteed.