

HUNTING, TIMBER INVESTMENT AND HOMESITES ON 38± ACRES IN JONES COUNTY, MS



\$212,800

This 38± acres in Jones County would make a great timber investment as much of the property consists of mature pine timber. Utilities are available near the property and plenty of great homesites. Great deer and turkey hunting to be had. The property also features a small pond. Quick access to HWY 49 and I 59, conveniently located just 15 minutes from Hattiesburg, MS. Good schools. Great road frontage on Hwy 590.

Directions from the intersection of US-49 and US-11 in Hattiesburg, MS: Travel north on US-49N for 3.9 miles, use the right lane to merge onto I-59N via the ramp to Laurel, in 5.6 miles, take Exit 73 for Monroe Rd, in .2 miles, turn left onto Monroe Rd, in .1 miles, turn right to stay on Monroe Rd, in 4.8 miles turn left onto Sanford Rd, in .2 miles, continue onto Monroe-Sanford Rd, in .2 miles continue onto Monroe Rd, in 5.3 miles, turn left onto MS-590W, the property will be on the right in 1.4 miles.



Call me today!

PRESTON SMITH, MANAGING BROKER
Preston@TomSmithLand.com
601.990.5070 office | 601.209.7150 cell



TomSmithLandandHomes.com

Information is believed to be accurate but not guaranteed.



PRESTON SMITH, MANAGING BROKER
Preston@TomSmithLand.com
601.990.5070 office | 601.209.7150 cell

TomSmithLandandHomes.com

Information is believed to be accurate but not guaranteed.



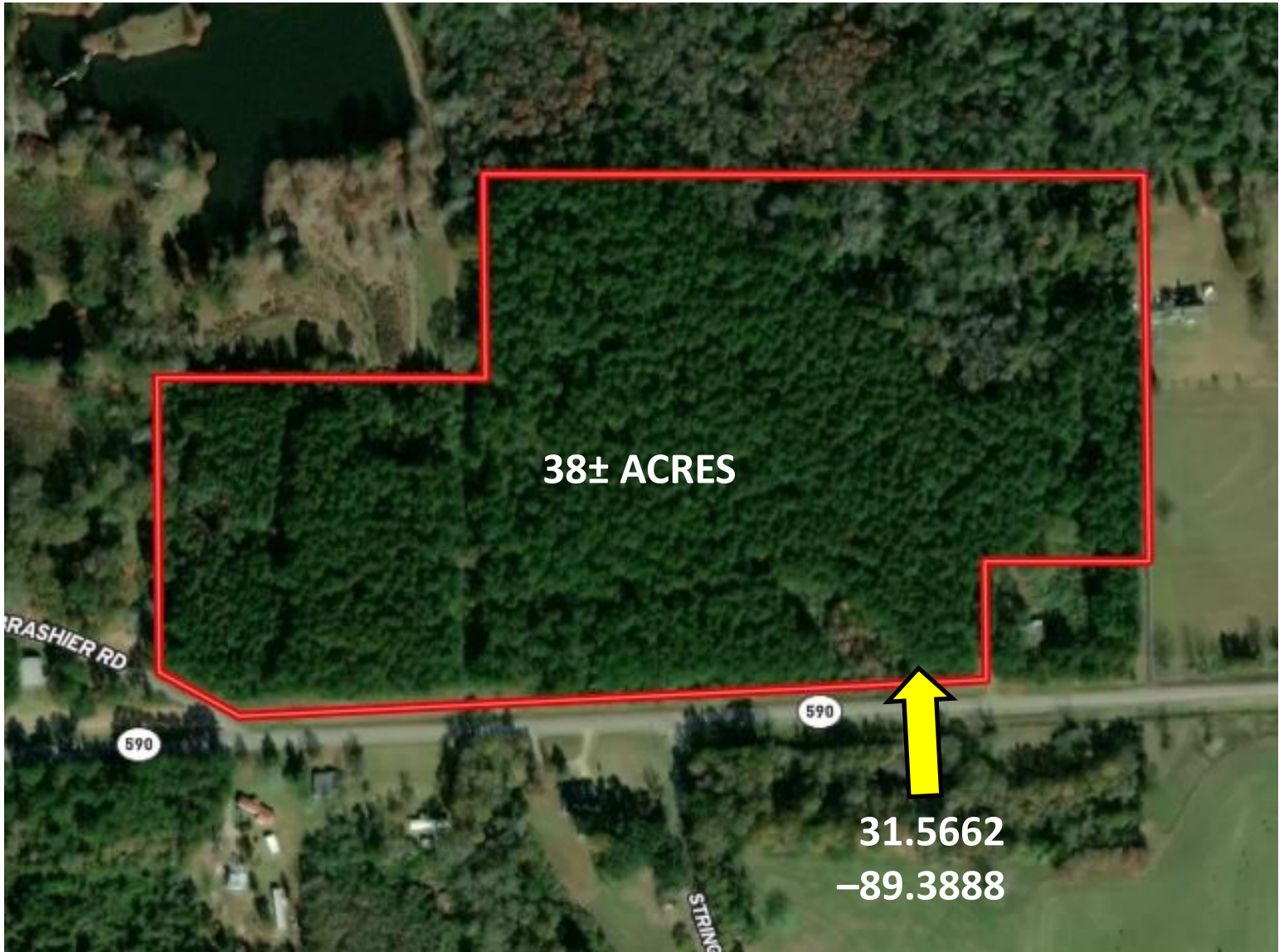
PRESTON SMITH, MANAGING BROKER
 Preston@TomSmithLand.com
 601.990.5070 office | 601.209.7150 cell



TomSmithLandandHomes.com

Information is believed to be accurate but not guaranteed.

Aerial Map



INTERACTIVE MAPS



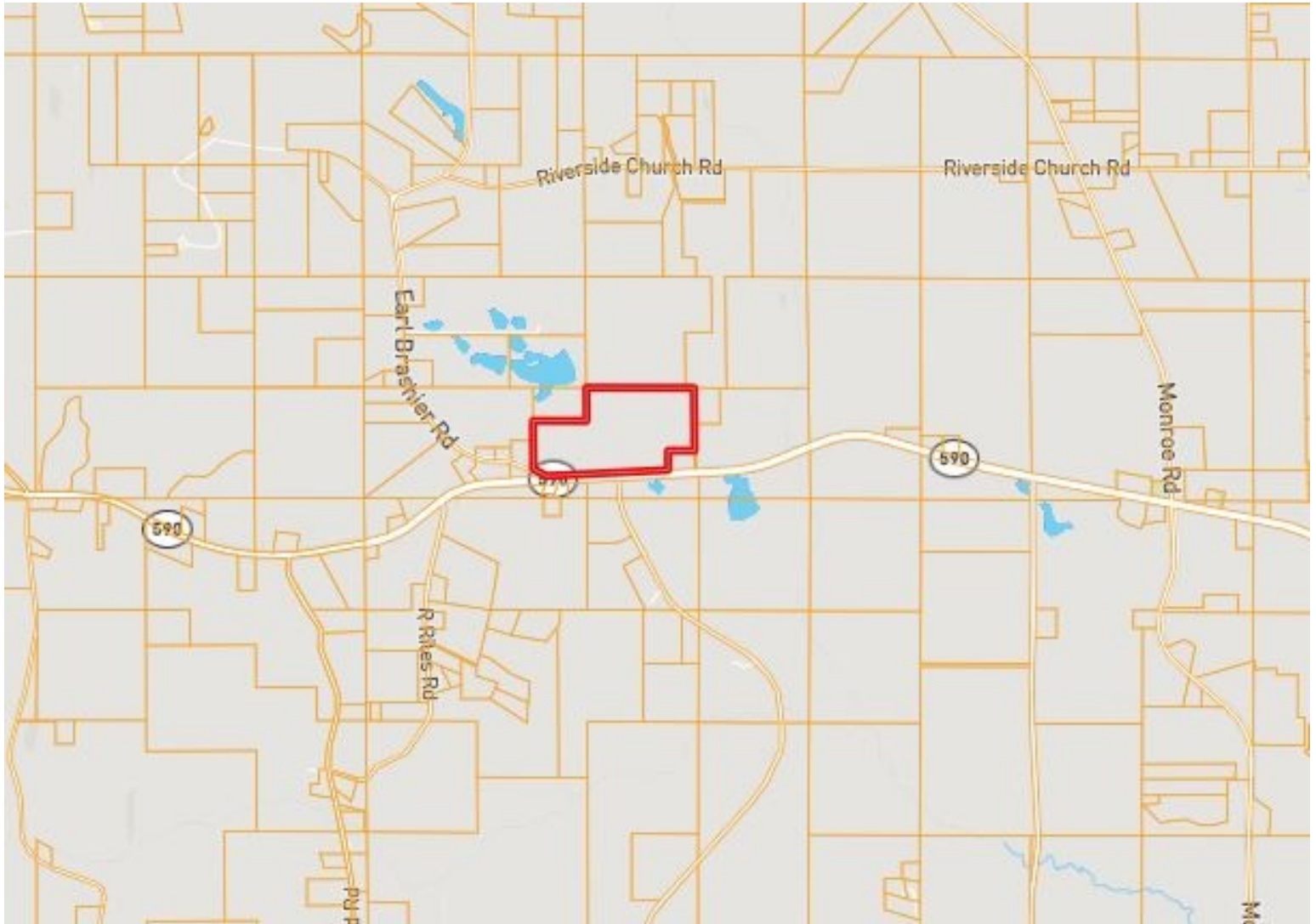
PRESTON SMITH, MANAGING BROKER
Preston@TomSmithLand.com
601.990.5070 office | 601.209.7150 cell



TomSmithLandandHomes.com

Information is believed to be accurate but not guaranteed.

Ownership Map



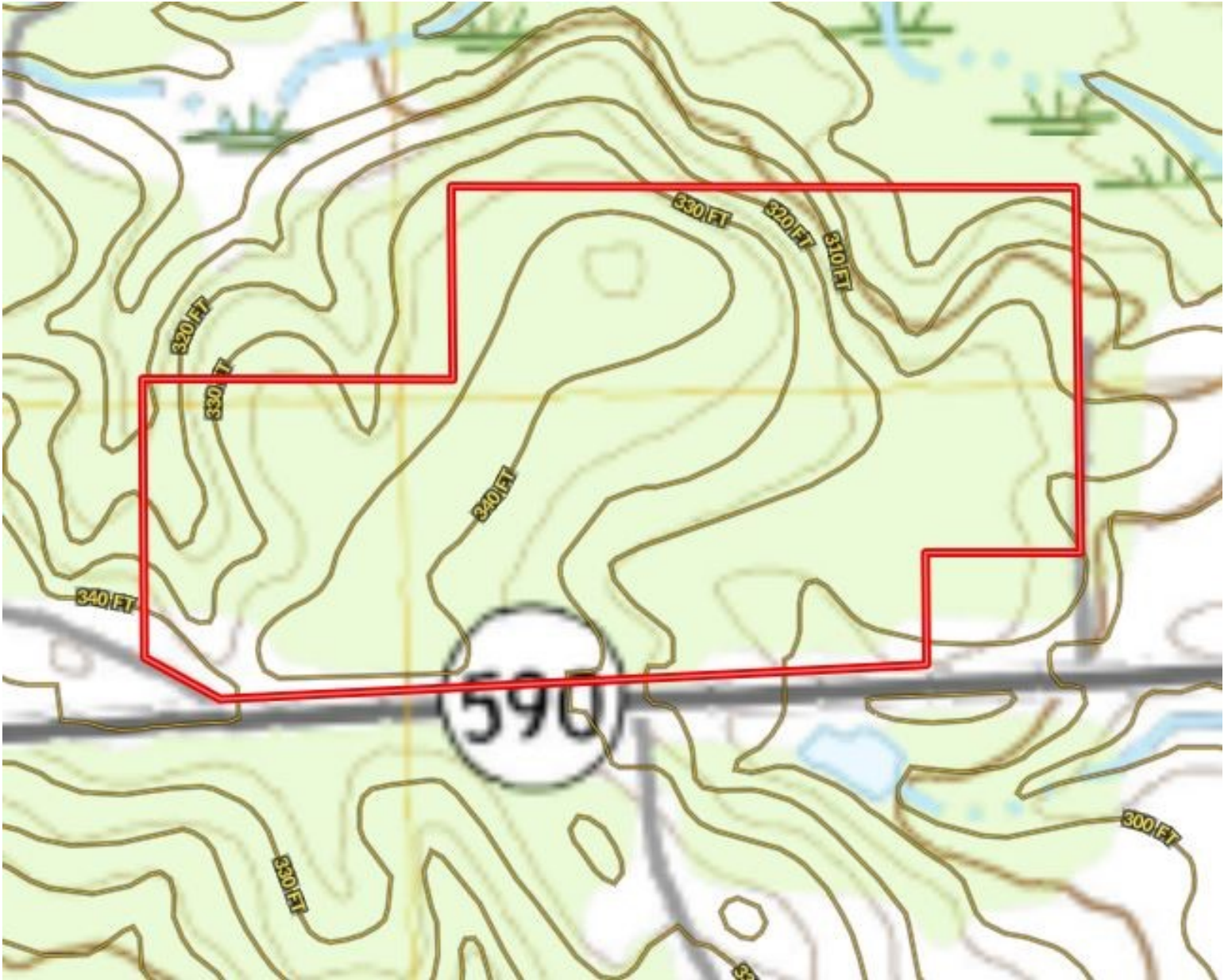
PRESTON SMITH, MANAGING BROKER
Preston@TomSmithLand.com
601.990.5070 office | 601.209.7150 cell



TomSmithLandandHomes.com

Information is believed to be accurate but not guaranteed.

Topography Map



PRESTON SMITH, MANAGING BROKER
Preston@TomSmithLand.com
601.990.5070 office | 601.209.7150 cell



TomSmithLandandHomes.com

Information is believed to be accurate but not guaranteed.

Flood Map



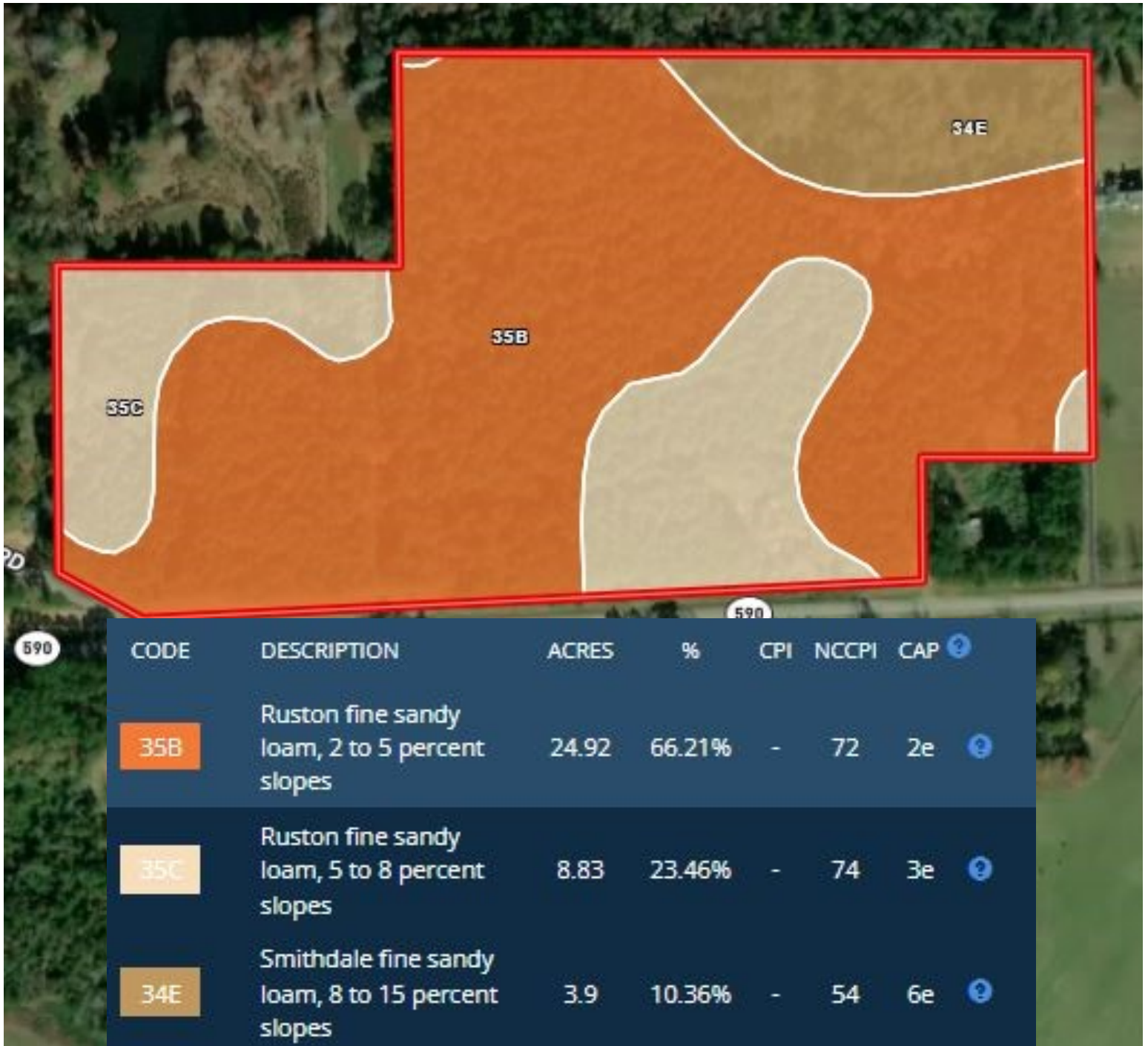
PRESTON SMITH, MANAGING BROKER
Preston@TomSmithLand.com
601.990.5070 office | 601.209.7150 cell



TomSmithLandandHomes.com

Information is believed to be accurate but not guaranteed.

Soil Map



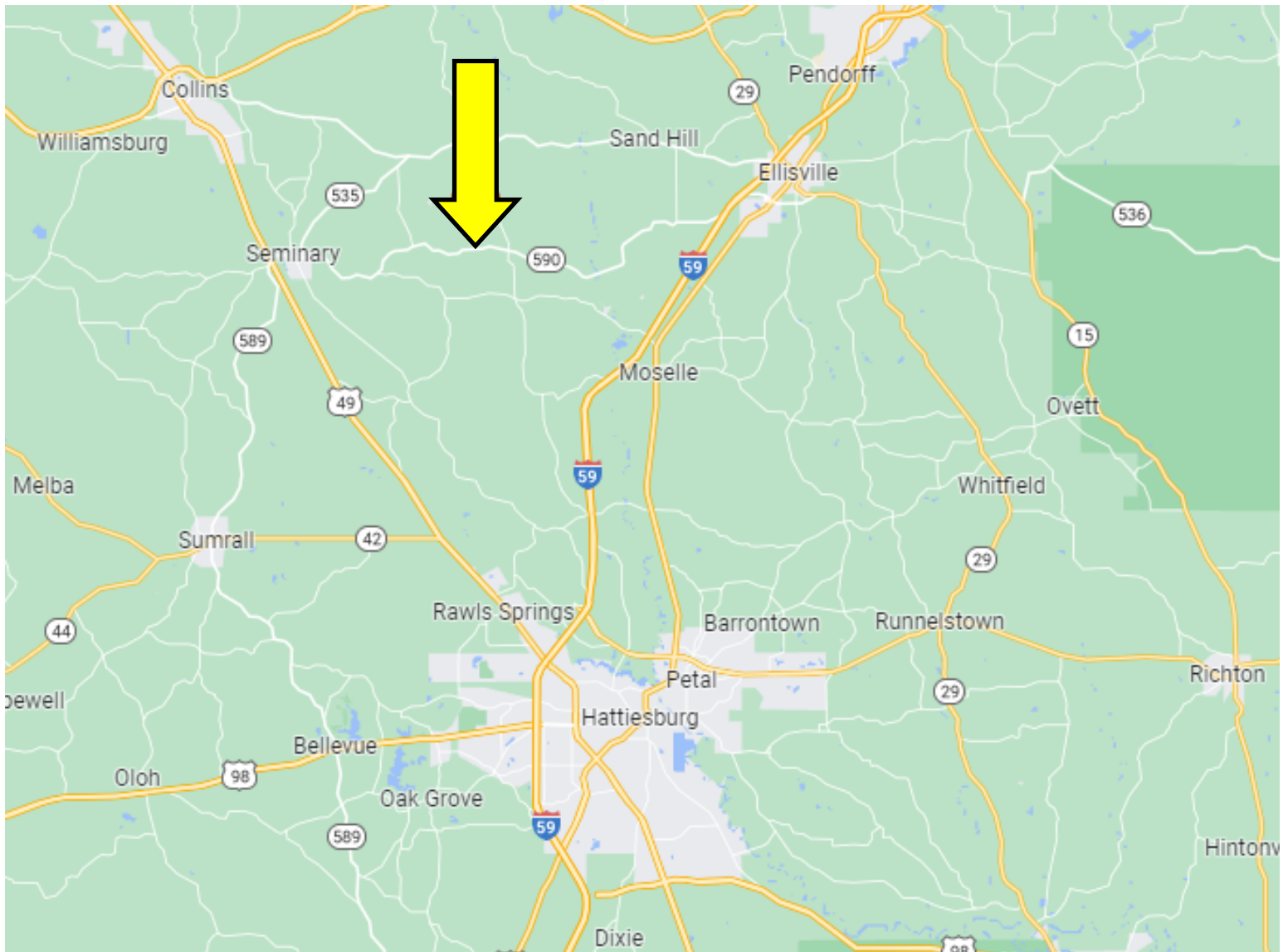
PRESTON SMITH, MANAGING BROKER
 Preston@TomSmithLand.com
 601.990.5070 office | 601.209.7150 cell



TomSmithLandandHomes.com

Information is believed to be accurate but not guaranteed.

Directional Map



Directions from the intersection of US-49 and US-11 in Hattiesburg, MS: Travel north on US-49N for 3.9 miles, use the right lane to merge onto I-59N via the ramp to Laurel, in 5.6 miles, take Exit 73 for Monroe Rd, in .2 miles, turn left onto Monroe Rd, in .1 miles, turn right to stay on Monroe Rd, in 4.8 miles turn left onto Sanford Rd, in .2 miles, continue onto Monroe-Sanford Rd, in .2 miles continue onto Monroe Rd, in 5.3 miles, turn left onto MS-590W, the property will be on the right in 1.4 miles.



PRESTON SMITH, MANAGING BROKER
Preston@TomSmithLand.com
601.990.5070 office | 601.209.7150 cell



TomSmithLandandHomes.com

Information is believed to be accurate but not guaranteed.