

1979 Short Road, Raymond, MS

6.06 ± Acres Hinds County, MS 39154



Welcome to the County Living Life at 1979 Short Road just outside of Raymond, Mississippi! This beautiful home was custom built on 6.06± acres in 2004. The vision was perfectly thought out to overlook the 1± acre stocked pond and country landscape. The home offers 2,330± square feet with four bedrooms (one previously used as office), two full baths (one is a jack and jill), and two half baths. The open, one story, split floorplan home includes a family/living room complete with a gas fireplace and lots of built-ins, a beautiful kitchen/breakfast area, a separate dining area, laundry room/pantry, and a sunroom with a beautiful view outdoors. The kitchen has an excellent bar top area and stainless appliances. The main suite features a luxurious bath with a large walk-in closet, jetted tub, a separate shower, and double vanities. Now to the main attraction: the backyard features a multitier deck overlooking the pond that is perfect for cookouts and all outdoor fun. The pond is fully stocked with bass, bream, and catfish and sure please any outdoorsman. You may also find deer feeding in the backyard from time to time. The location is perfect being just 3 miles outside of Raymond. If you have been looking for a the perfect country setup to spread out on that's not too far from town, put 1979 Short Road on your list! Call Michael Oswald today to schedule a private showing!



MORE THAN
15K
FOLLOWERS
ON FACEBOOK

Call me today!

MICHAEL OSWALT, ASSOCIATE BROKER®
Michael@TomSmithLand.com
601.898.2772 office | 662.719.3967 cell
Licensed in MS, AR & MO



TomSmithLandandHomes.com

Information is believed to be accurate but not guaranteed.



MORE THAN 15K FOLLOWERS ON FACEBOOK



MICHAEL OSWALT, ASSOCIATE BROKER®
Michael@TomSmithLand.com
601.898.2772 office | 662.719.3967 cell
Licensed in MS, AR & MO



Expect More. Get More.

TomSmithLandandHomes.com

Information is believed to be accurate but not guaranteed.



MORE THAN 15K FOLLOWERS ON FACEBOOK

MICHAEL OSWALT, ASSOCIATE BROKER®
Michael@TomSmithLand.com
601.898.2772 office | 662.719.3967 cell
Licensed in MS, AR & MO



Expect More. Get More.

TomSmithLandandHomes.com

Information is believed to be accurate but not guaranteed.



MORE THAN 15K FOLLOWERS ON FACEBOOK



MICHAEL OSWALT, ASSOCIATE BROKER®
Michael@TomSmithLand.com
601.898.2772 office | 662.719.3967 cell
Licensed in MS, AR & MO



Expect More. Get More.

TomSmithLandandHomes.com

Information is believed to be accurate but not guaranteed.



MORE THAN 15K FOLLOWERS ON FACEBOOK



MICHAEL OSWALT, ASSOCIATE BROKER®
Michael@TomSmithLand.com
601.898.2772 office | 662.719.3967 cell
Licensed in MS, AR & MO

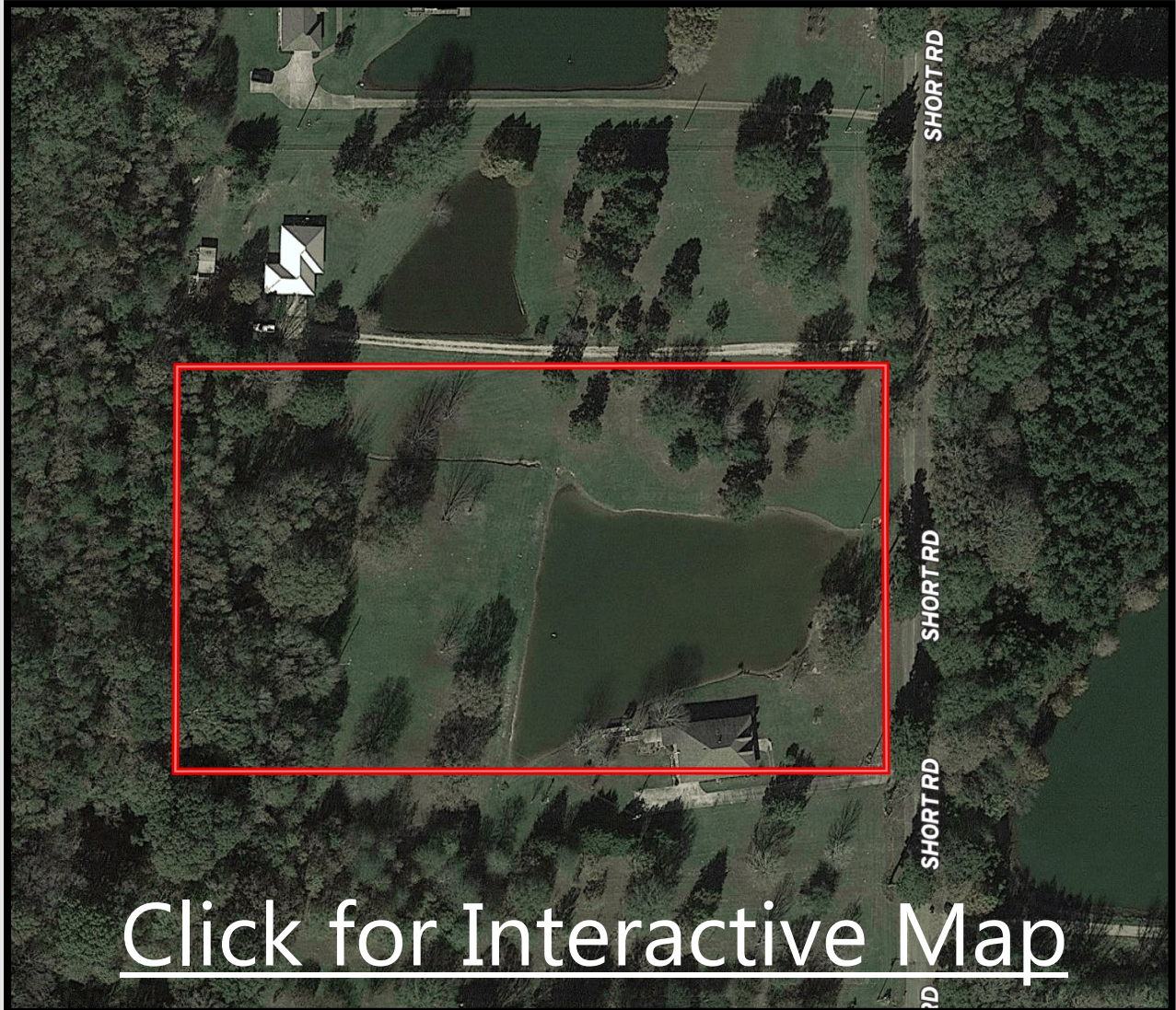


Expect More. Get More.

TomSmithLandandHomes.com

Information is believed to be accurate but not guaranteed.

Aerial Map



[Click for Interactive Map](#)



MICHAEL OSWALT, ASSOCIATE BROKER®
Michael@TomSmithLand.com
601.898.2772 office | 662.719.3967 cell
Licensed in MS, AR & MO

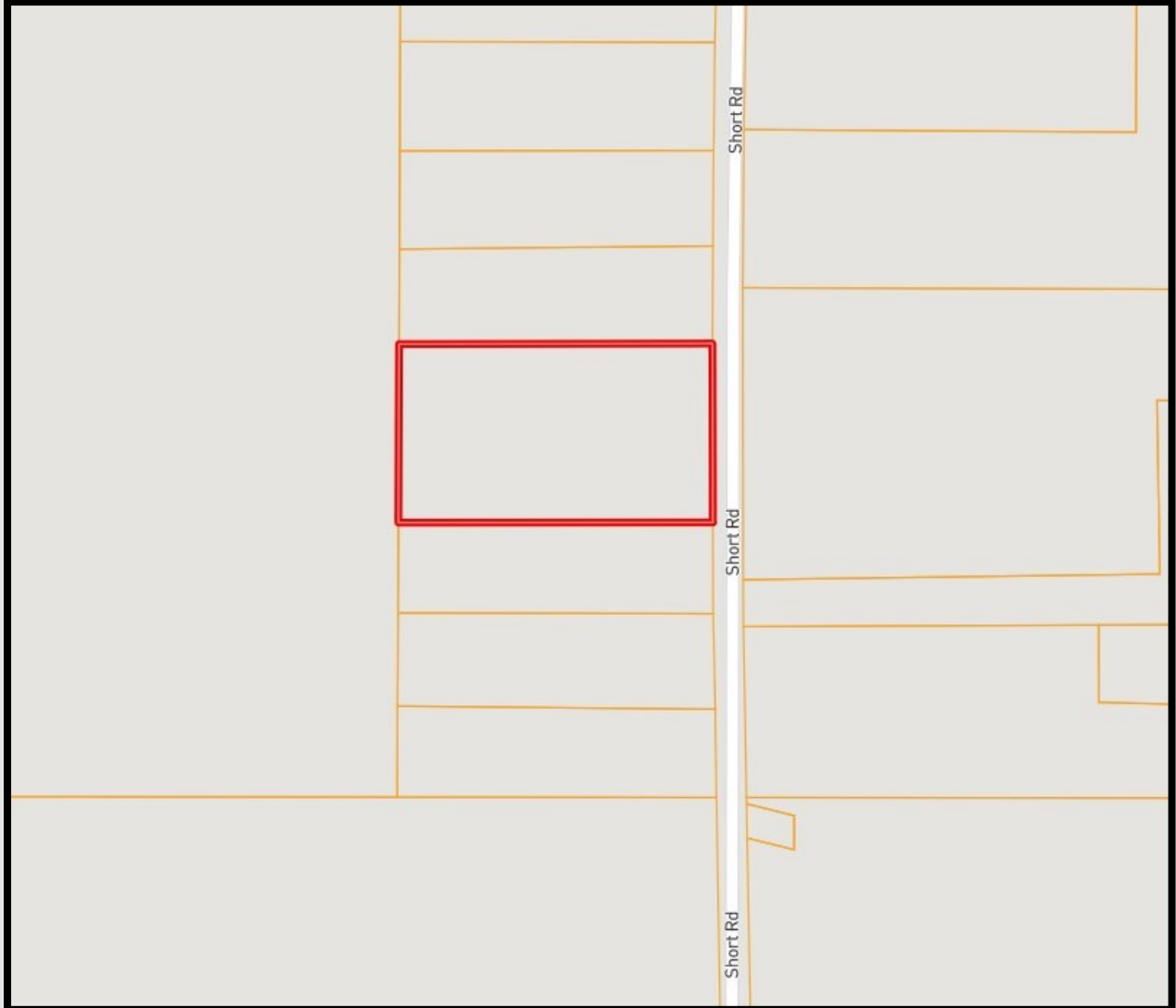


Expect More. Get More.

TomSmithLandandHomes.com

Information is believed to be accurate but not guaranteed.

Ownership Map



MICHAEL OSWALT, ASSOCIATE BROKER®

Michael@TomSmithLand.com

601.898.2772 office | 662.719.3967 cell

Licensed in MS, AR & MO

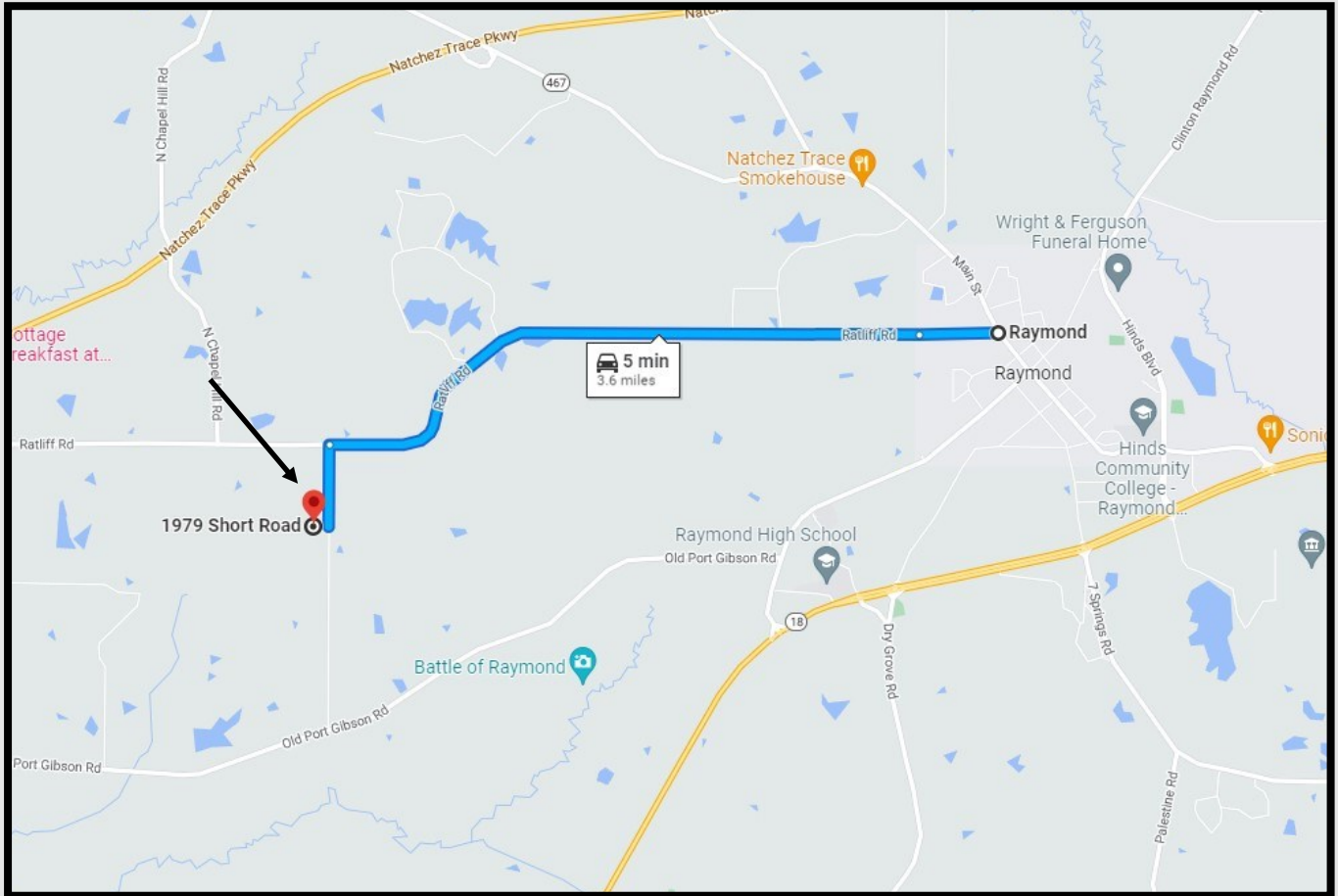


Expect More. Get More.

TomSmithLandandHomes.com

Information is believed to be accurate but not guaranteed.

Directional Map



Directions from Main Street in Raymond, MS: Travel west on Dupree Street and continue straight onto Ratliff Rd for 3.3 miles. Turn left on Short Rd and the property will be located on the right in 0.4 miles. Click [here](#) for Google Maps.



MORE THAN
15K
FOLLOWERS
ON FACEBOOK

Call me today!

MICHAEL OSWALT, ASSOCIATE BROKER®
Michael@TomSmithLand.com
601.898.2772 office | 662.719.3967 cell
Licensed in MS, AR & MO



Expect More. Get More.

TomSmithLandandHomes.com

Information is believed to be accurate but not guaranteed.