



## 0.13+/- Acre Beach Destination Harrison County, MS



**\$44,999**

134 A Markham Drive, Long Beach, MS 39560

Are you looking for a beach vacation spot or homesite? Take a look at this .13+/- acre lot in Harrison County, MS within walking distance of the beach! Come enjoy a relaxed coastal atmosphere in Long Beach, with quick access to casinos, restaurants, and the many amenities and Gulf Coast attractions. Long Beach Schools are highly rated and sought after. This would be a perfect place to build that dream home or vacation spot! Utilities are available and there is a 850 minimum square foot restriction to build. Call Tara today to schedule a viewing!

Directions from the intersection of 25th Avenue and W Beach Blvd in Long Beach, MS:

Turn right onto W Beach Blvd. Travel 5.7 miles and turn right onto Markham Drive. The property will be on the right in 0.2 miles.

Address: 134 A Markham Drive, Long Beach, MS 39560



*Call me today!*

**TARA WALKER SMITH, REALTOR®**  
Tara@TomSmithHomes.com  
601.990.5070 **office** | 601.407.4315 **cell**



Expect More. Get More.

**TomSmithLandandHomes.com**

Information is believed to be accurate but not guaranteed.



LandReport  
2011-2021  
BEST  
BROKERAGES

*Call me today!*

**TARA WALKER SMITH, REALTOR®**  
Tara@TomSmithHomes.com  
601.990.5070 office | 601.407.4315 cell



Expect More. Get More.

**TomSmithLandandHomes.com**

Information is believed to be accurate but not guaranteed.

# Aerial Map



[Click for Interactive Map](#)



LandReport  
2011-2021  
AMERICA'S  
**BEST**  
BROKERAGES

*Call me today!*

**TARA WALKER SMITH, REALTOR®**  
Tara@TomSmithHomes.com  
601.990.5070 **office** | 601.407.4315 **cell**

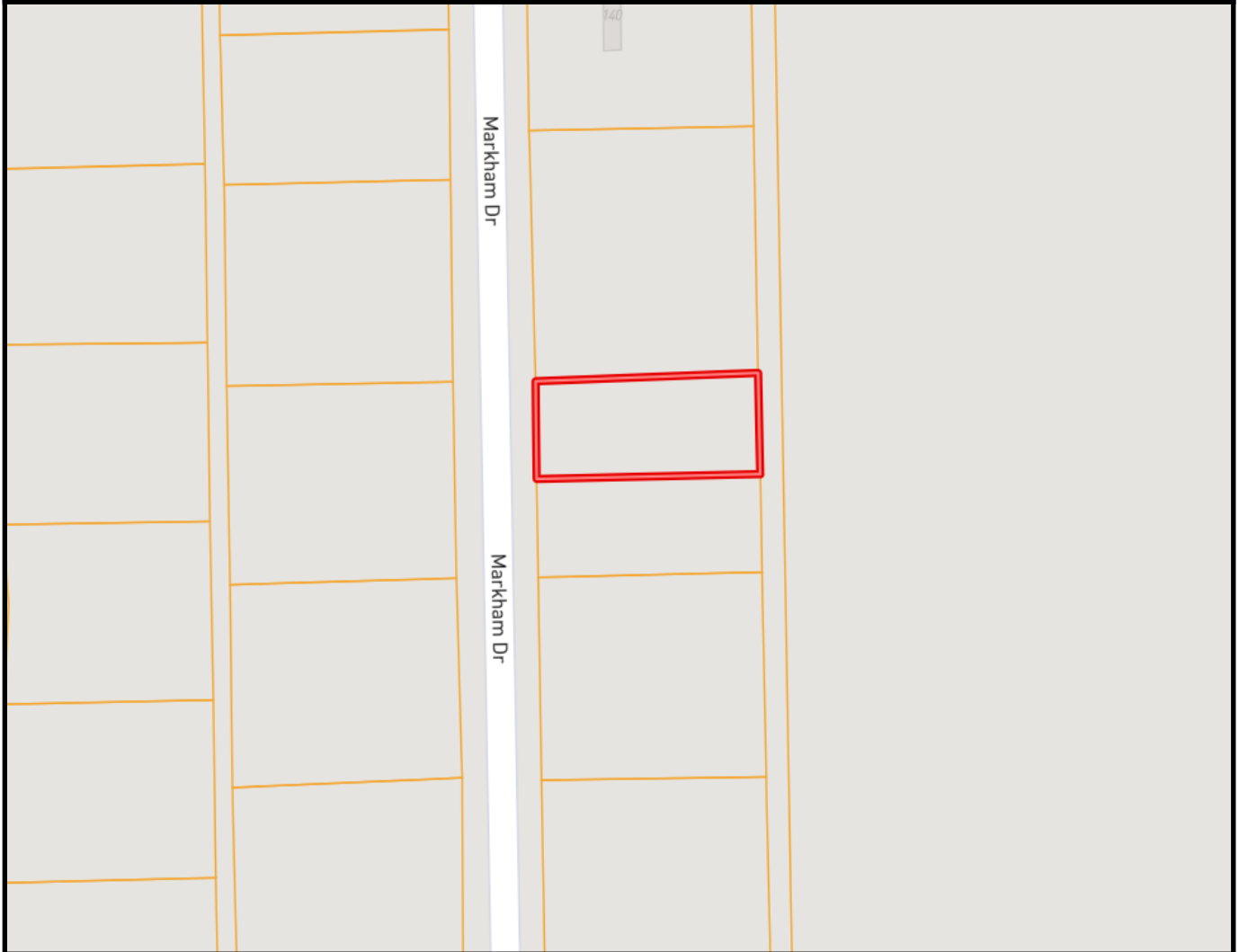


Expect More. Get More.

[TomSmithLandandHomes.com](http://TomSmithLandandHomes.com)

Information is believed to be accurate but not guaranteed.

# Ownership Map



LandReport  
2011-2021  
AMERICA'S  
**BEST**  
BROKERAGES

*Call me today!*

**TARA WALKER SMITH, REALTOR®**  
Tara@TomSmithHomes.com  
601.990.5070 **office** | 601.407.4315 **cell**

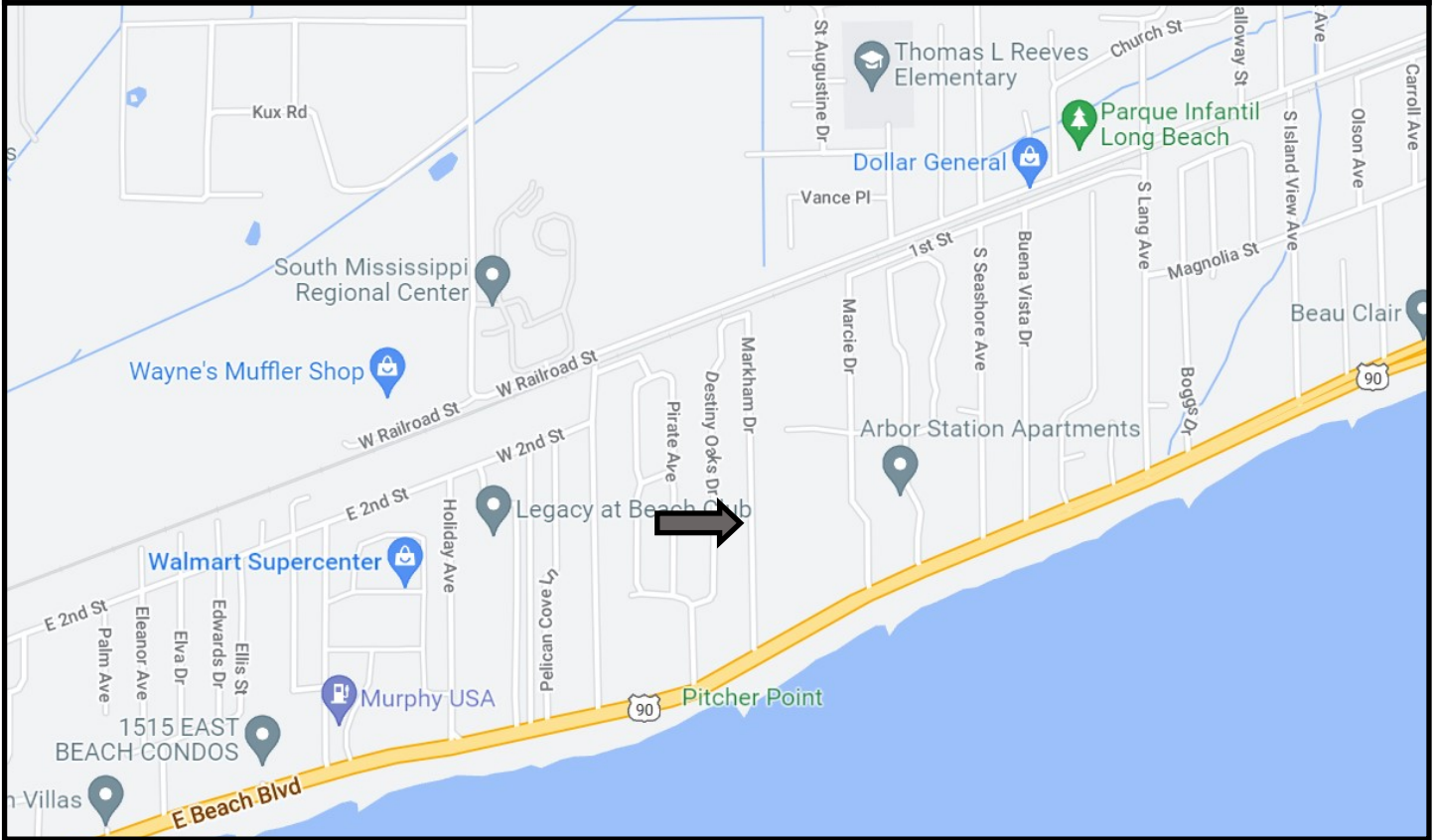


Expect More. Get More.

**TomSmithLandandHomes.com**

Information is believed to be accurate but not guaranteed.

# Directional Map



Directions from the intersection of 25th Avenue and W Beach Blvd in Long Beach, MS:  
Turn right onto W Beach Blvd. Travel 5.7 miles and turn right onto Markham Drive. The property will be on the right in 0.2 miles.

Address: 134 A Markham Drive, Long Beach, MS 39560



*Call me today!*

**TARA WALKER SMITH, REALTOR®**  
Tara@TomSmithHomes.com  
601.990.5070 office | 601.407.4315 cell



**TomSmithLandandHomes.com**

Information is believed to be accurate but not guaranteed.