

Family Estate & Farm

54± ACRES IN LAUDERDALE COUNTY, MS



\$697,000

- 54 Acre± in Lauderdale County, MS
- 4,500 SQ FT Home Built Circa 1914
- Formal Dining
- Sitting Parlors
- Pristine Condition
- Breathtaking Views
- Remodeled and Updated in 2000
- Wood Burning Fireplaces
- Dairy Barn, Horse/Mule Barn
- Fully Fenced
- Workshops
- Several Outbuildings
- Rollings Pastures
- Fully Stocked Lake with Bass and Bream
- Located Only 3 Minutes from I-20 in Meridian

[CLICK HERE FOR DRONE FOOTAGE](#)



Call The Land Man Today!

TOM SMITH, ALC®, BROKER

Tom@TomSmithLand.com

601.898.2772 **office** | 601.454.9397 **cell**

112 Village Blvd, Madison, MS 39110



Expect More. Get More.

TomSmithLandandHomes.com

Information is believed to be accurate but not guaranteed.



This is one of the most beautiful properties that you will ever see. If you and your family are looking for one of the finest retreats that Mississippi has to offer, then you owe it to yourself to come see this property. As you round the curve on Causeville Road and see this breathtaking estate, you will know that you have arrived in paradise. The property has been in the same family for over 115 years and has been kept in immaculate condition the entire time. History tells it that there have been very few people ever allowed to come into the home, so you can imagine how pristine the place is. The farm was a working Dairy operation until a few years ago. It is fully fenced and cross-fenced and is ready for your livestock today! The Dairy barn, the Horse barn and the historic outbuildings all give the place its majestic character

THE HOME

Built in the early 1900's, the home is a masterful work of art. As you enter the home through the double entry foyer, you will be taken back by the beautiful double wing staircase leading to the second floor. Downstairs features an amazing formal dining room, two family (sitting) rooms known as Parlor A and Parlor B, a sunroom, an office (could be an additional bedroom), and a full bathroom. The kitchen is very large, with ample storage, a butlers pantry and the laundry room, plus a wall of west-facing windows that highlight the beautiful sunsets over the pond and pasture. On the second floor you will find three very large bedrooms, one small but beautiful southwest-facing bedroom, and another full bathroom. There is a landing between the first and second floors that is also a sitting area and is absolutely classic. The kitchen was updated in 2000 as was all wiring and mechanical and the home is functioning beautifully. If you are looking for your forever home, a potential Bed and Breakfast, or the perfect wedding or event venue, THIS IS IT!

PROPERTY DETAILS

The grounds consist of a two car garage, the original pump room, two milk rooms, the magnificent dairy barn with an unbelievable loft, several historic and fully functioning out buildings, a horse / livestock barn with five stalls and turnout as well as a covered equipment and lumber storage area. There is also an additional 140X84 barn with full loft that adjoins the dairy barn. This property is truly one of a kind and is rich with history. You owe it to yourself to take a look at the gorgeous property if you think it may just be what you've been looking for. If you are looking for a place for your family estate where you can also build more homes for your family over the years, this is it, as there are several additional sites to build throughout the property! Call Tom to schedule your private viewing of this premier property!!



Call The Land Man Today!

TOM SMITH, ALC®, BROKER
Tom@TomSmithLand.com
601.898.2772 **office** | 601.454.9397 **cell**

112 Village Blvd, Madison, MS 39110



Expect More. Get More.

TomSmithLandandHomes.com

Information is believed to be accurate but not guaranteed.



TOM SMITH, ALC®, BROKER
 Tom@TomSmithLand.com
 601.898.2772 office | 601.454.9397 cell



TomSmithLandandHomes.com

Information is believed to be accurate but not guaranteed.



TOM SMITH, ALC®, BROKER
Tom@TomSmithLand.com
601.898.2772 office | 601.454.9397 cell



TomSmithLandandHomes.com

Information is believed to be accurate but not guaranteed.



TOM SMITH, ALC®, BROKER
Tom@TomSmithLand.com
601.898.2772 office | 601.454.9397 cell



Expect More. Get More.

TomSmithLandandHomes.com

Information is believed to be accurate but not guaranteed.

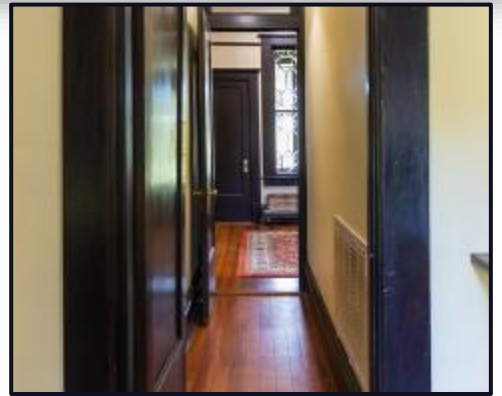


TOM SMITH, ALC®, BROKER
Tom@TomSmithLand.com
601.898.2772 office | 601.454.9397 cell



TomSmithLandandHomes.com

Information is believed to be accurate but not guaranteed.



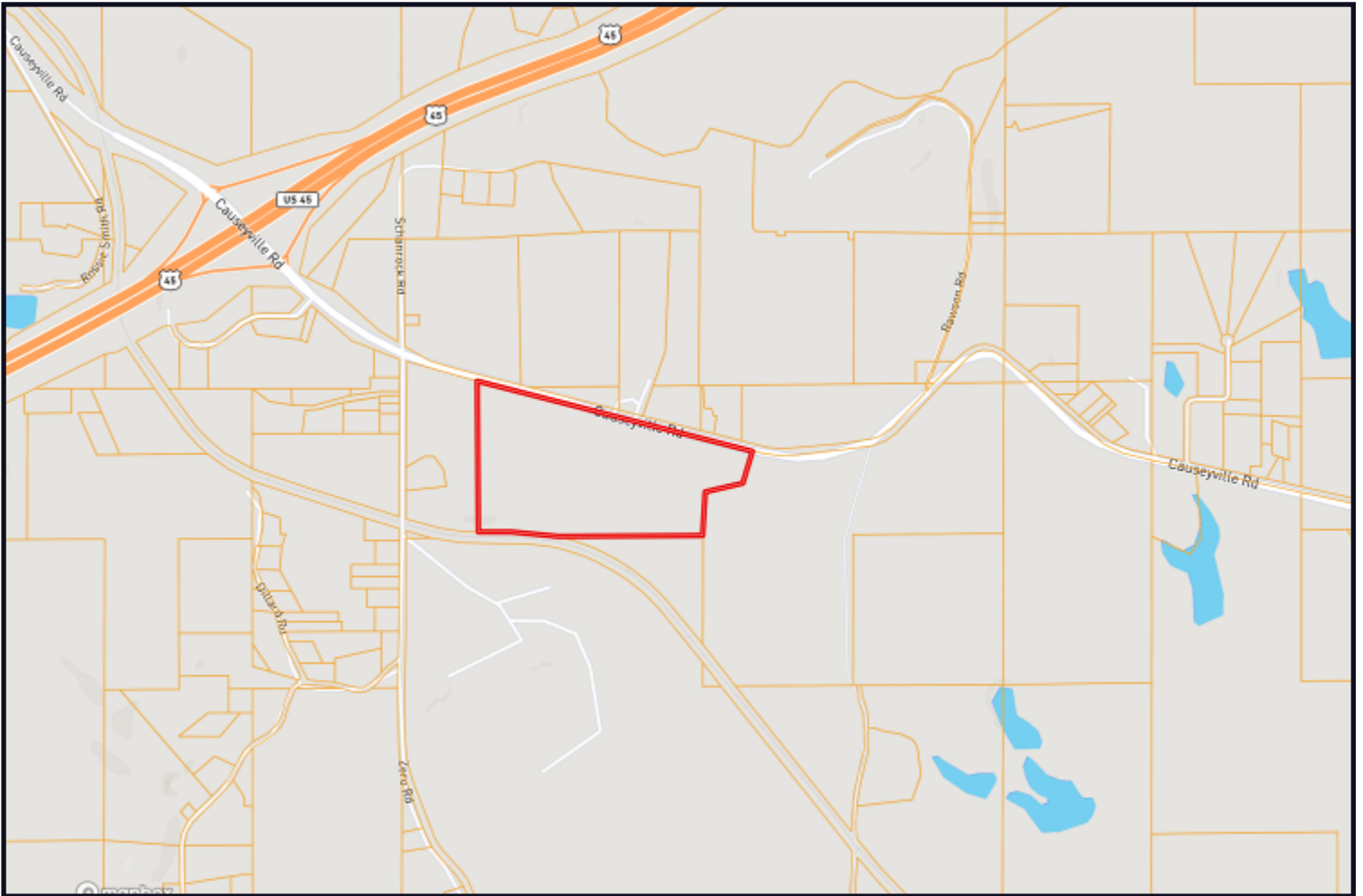
TOM SMITH, ALC®, BROKER
 Tom@TomSmithLand.com
 601.898.2772 office | 601.454.9397 cell



TomSmithLandandHomes.com

Information is believed to be accurate but not guaranteed.

Ownership Map



TOM SMITH, ALC®, BROKER
Tom@TomSmithLand.com
601.898.2772 office | 601.454.9397 cell



Expect More. Get More.

TomSmithLandandHomes.com

Information is believed to be accurate but not guaranteed.

Aerial Map



[Click Here for an Interactive Map](#)



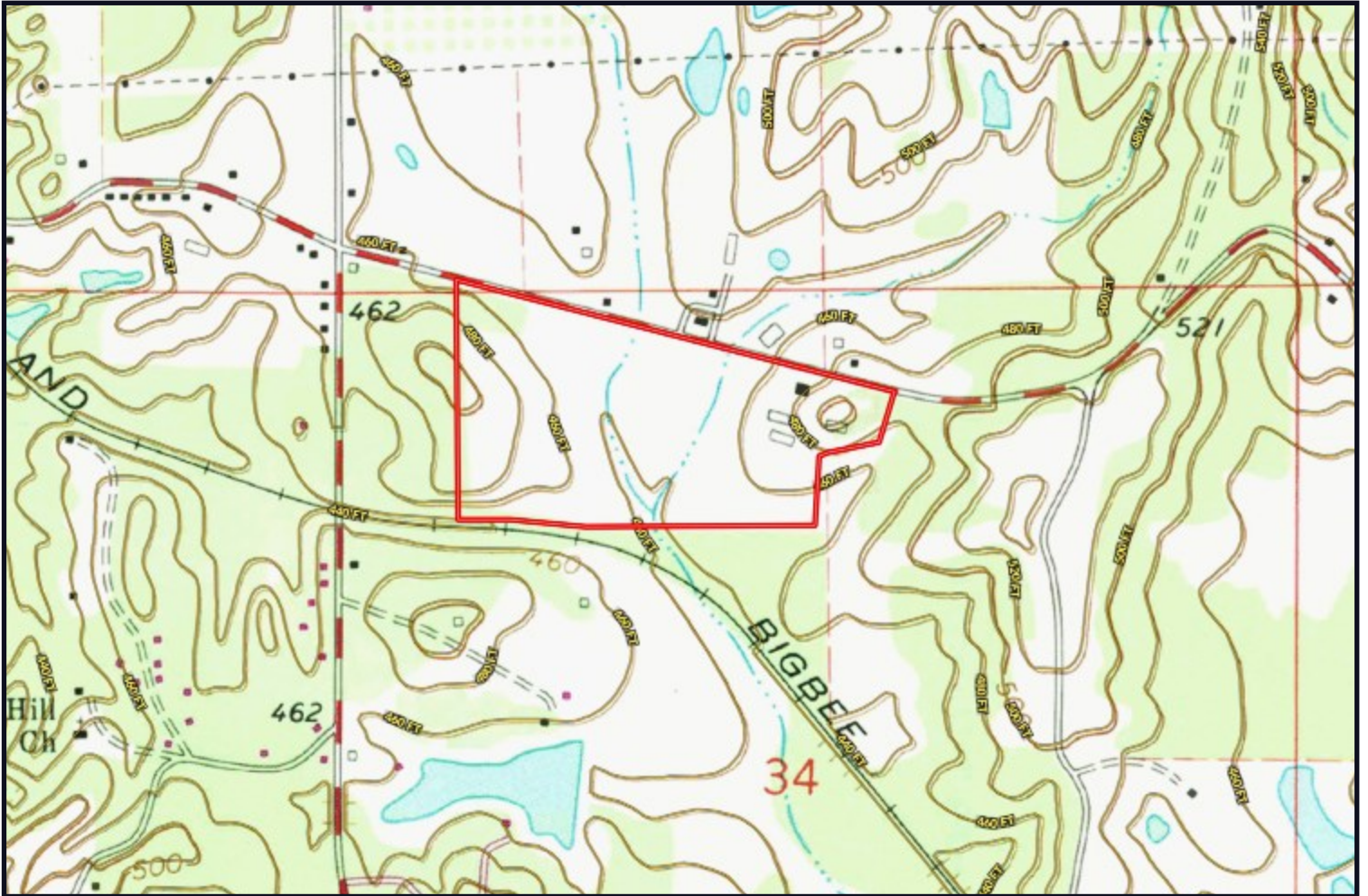
TOM SMITH, ALC®, BROKER
Tom@TomSmithLand.com
601.898.2772 office | 601.454.9397 cell



TomSmithLandandHomes.com

Information is believed to be accurate but not guaranteed.

Topo Map



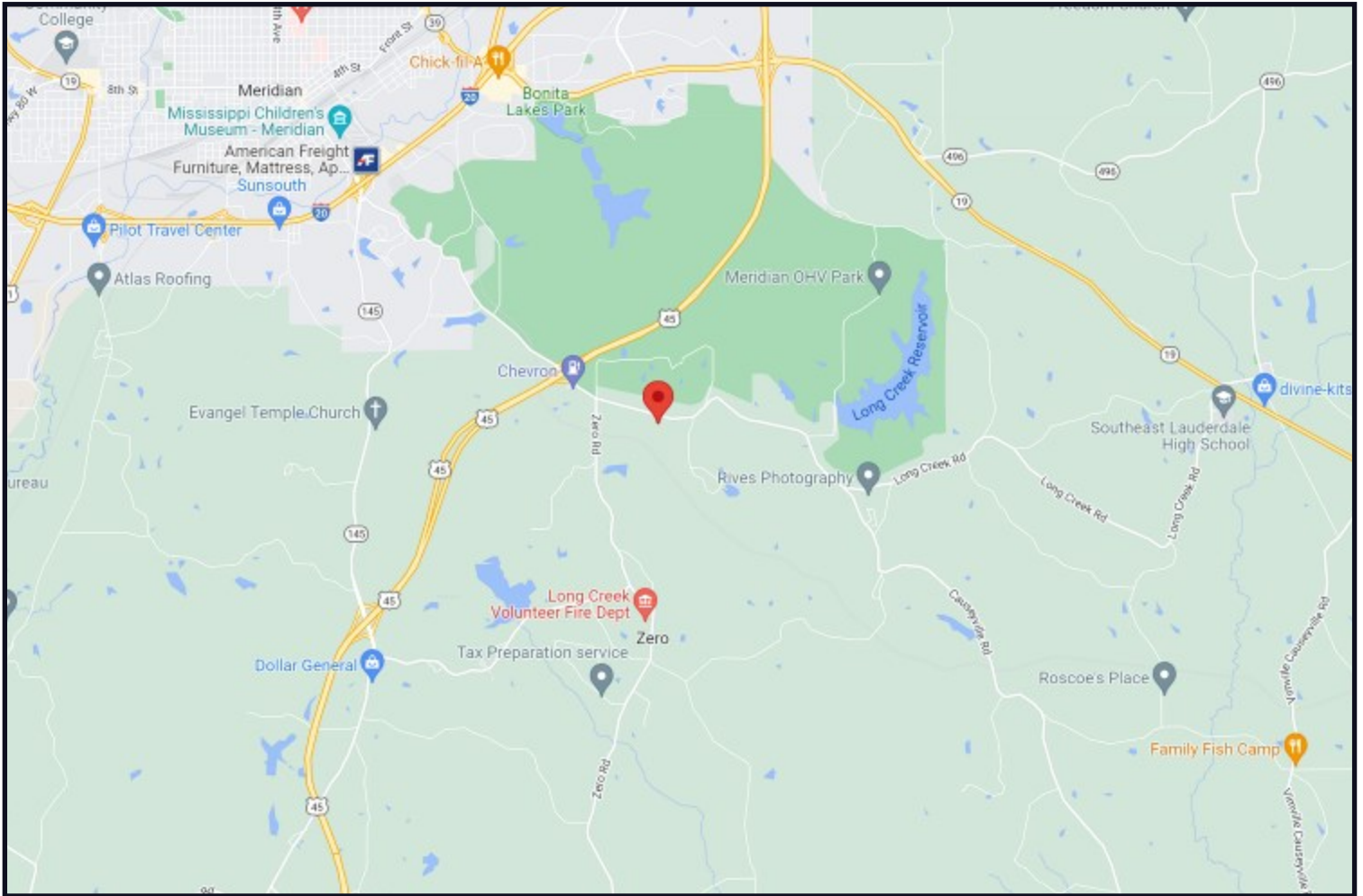
TOM SMITH, ALC®, BROKER
Tom@TomSmithLand.com
601.898.2772 office | 601.454.9397 cell



TomSmithLandandHomes.com

Information is believed to be accurate but not guaranteed.

Directional Map



Directions from I-20 in Meridian, MS: Take exit 153 for 22nd Ave Heights. Stay on 22nd Ave Heights and continue to the Highway 45 underpass. Keep going straight, as this is now Causeyville Rd. Property is 8/10 of a mile from underpass on your right. **3496 Causeyville Road, Meridian, MS 39301**



Call The Land Man Today!

TOM SMITH, ALC®, BROKER
Tom@TomSmithLand.com
601.898.2772 **office** | 601.454.9397 **cell**

112 Village Blvd, Madison, MS 39110



Expect More. Get More.

TomSmithLandandHomes.com

Information is believed to be accurate but not guaranteed.