



Remodeled Beach Home on 0.31+/- Acre Harrison County, MS



\$225,750

324 S Seal Avenue Long Beach, MS 39560

If you're looking for a move-in-ready beach home, this three bedroom, two bathroom, 1,650+/- square foot home on .31 +/- acres is the perfect one! Located in Harrison County, MS, in the heart of Long Beach, convenient to shopping, dining, and nightlife and less than two miles from the beach! Also, near casinos, MS Gulf Coast attractions, fishing, festivals, and cruising the coast!! The home has recently been remodeled, with all new electrical appliances, updated bathrooms, and fresh paint. This property features a fenced-in backyard, well-manicured lawn, and landscaping and is waiting for its new owners to make it their own. Call Tara today to schedule a viewing!

Directions from the intersection of Hwy 90/Hwy 49 in Long Beach, MS: Travel west on Hwy 90 for 4 miles. Turn right onto S Girard Avenue. Travel 0.4 miles and turn left on W Railroad Street. Travel 430 feet and turn right onto 4th Avenue. Travel 0.2 miles and turn right onto Old Pass Road W. Travel 387 feet and turn left onto Seal Avenue. The home will be on the left in 100 feet.

Address: 324 S Seal Avenue Long Beach, MS 39560



Call me today!

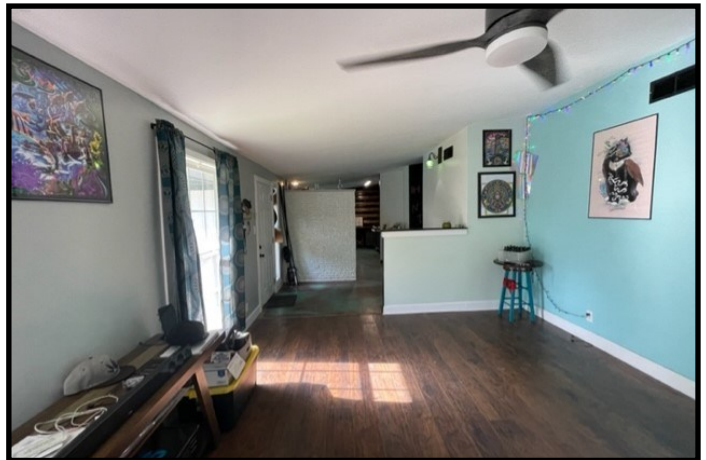
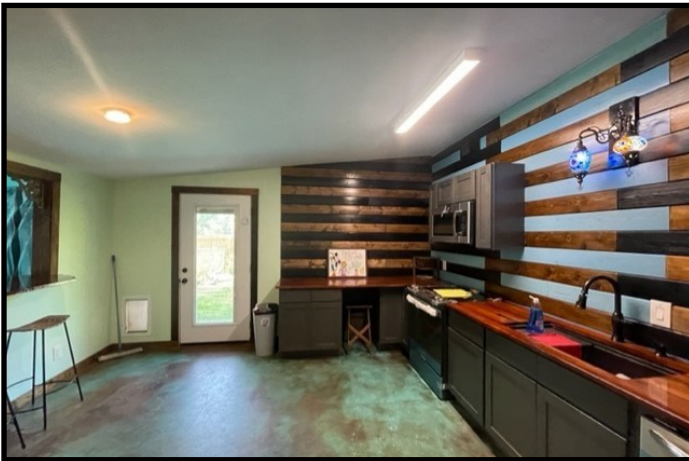
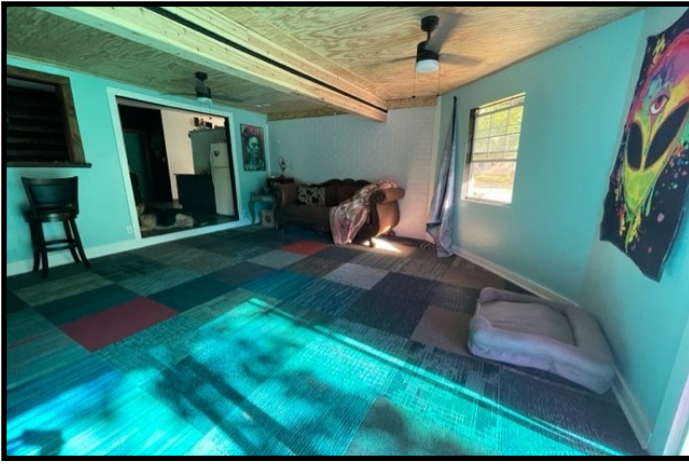
TARA WALKER SMITH, REALTOR®
Tara@TomSmithHomes.com
601.990.5070 **office** | 601.407.4315 **cell**



Expect More. Get More.

TomSmithLandandHomes.com

Information is believed to be accurate but not guaranteed.



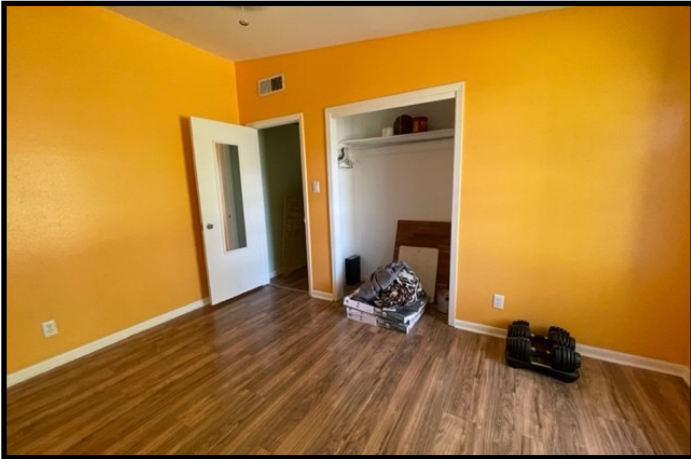
Call me today!

TARA WALKER SMITH, REALTOR®
Tara@TomSmithHomes.com
601.990.5070 office | 601.407.4315 cell



TomSmithLandandHomes.com

Information is believed to be accurate but not guaranteed.



2011-2021
 FRANCHISE
BEST
 BROKERAGES

Call me today!

TARA WALKER SMITH, REALTOR®
 Tara@TomSmithHomes.com
 601.990.5070 **office** | 601.407.4315 **cell**



TomSmithLandandHomes.com

Information is believed to be accurate but not guaranteed.



Call me today!

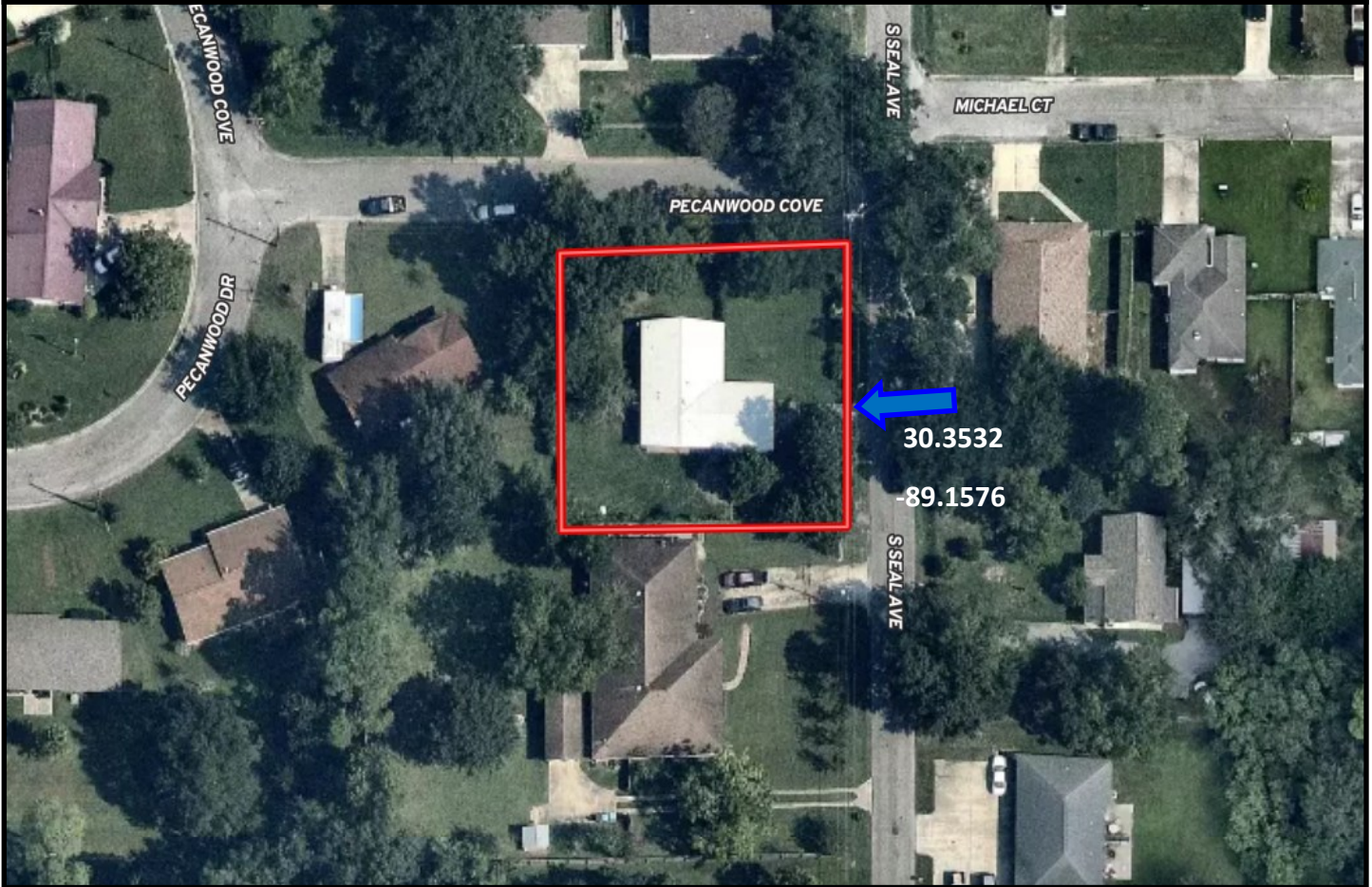
TARA WALKER SMITH, REALTOR®
 Tara@TomSmithHomes.com
 601.990.5070 **office** | 601.407.4315 **cell**



TomSmithLandandHomes.com

Information is believed to be accurate but not guaranteed.

Aerial Map



[Click for Interactive Map](#)



LandReport
2011-2021
AMERICA'S
BEST
BROKERAGES

Call me today!

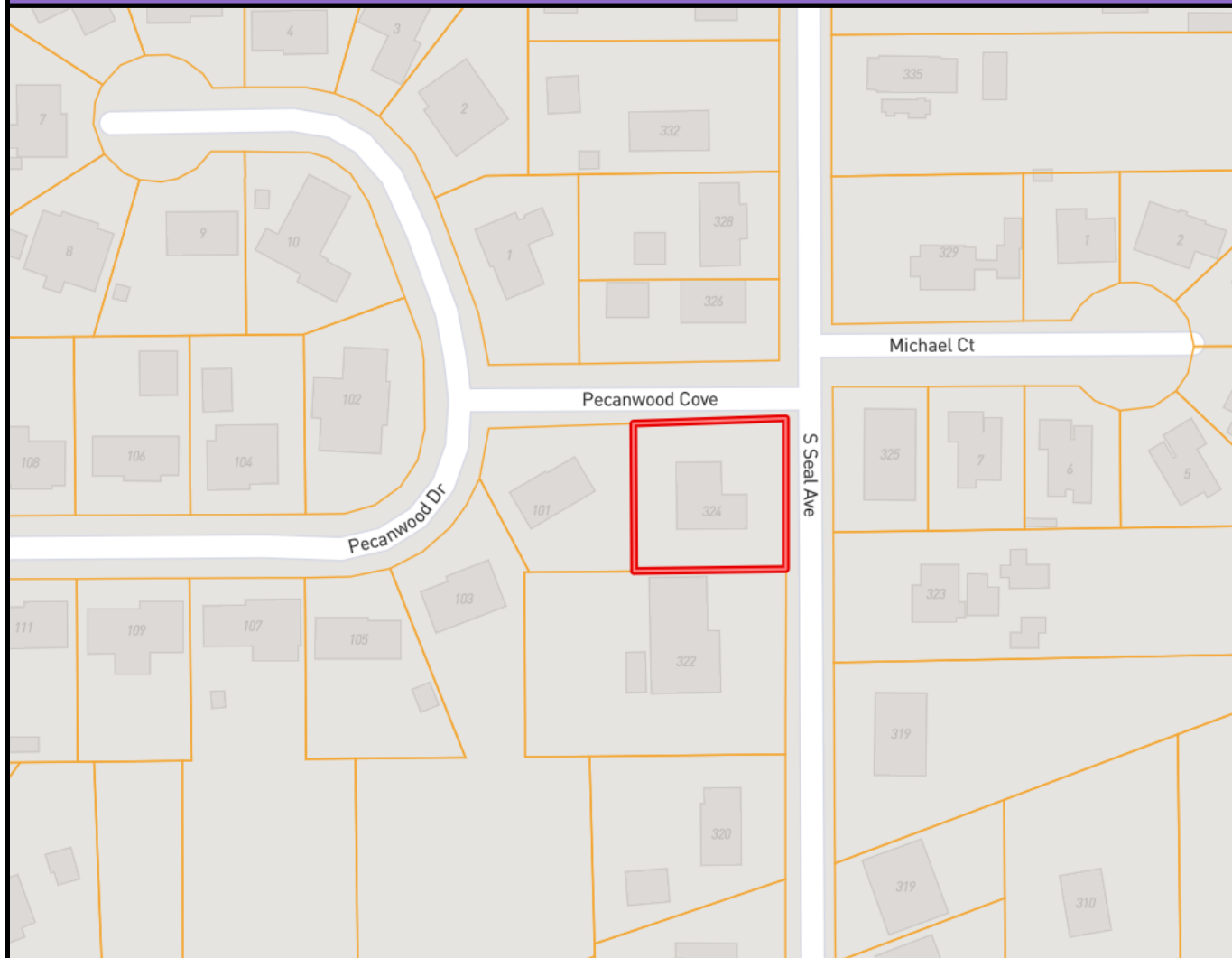
TARA WALKER SMITH, REALTOR®
Tara@TomSmithHomes.com
601.990.5070 **office** | 601.407.4315 **cell**



TomSmithLandandHomes.com

Information is believed to be accurate but not guaranteed.

Ownership Map



2011-2021
AMERICA'S
BEST
BROKERAGES

Call me today!

TARA WALKER SMITH, REALTOR®
Tara@TomSmithHomes.com
601.990.5070 **office** | 601.407.4315 **cell**

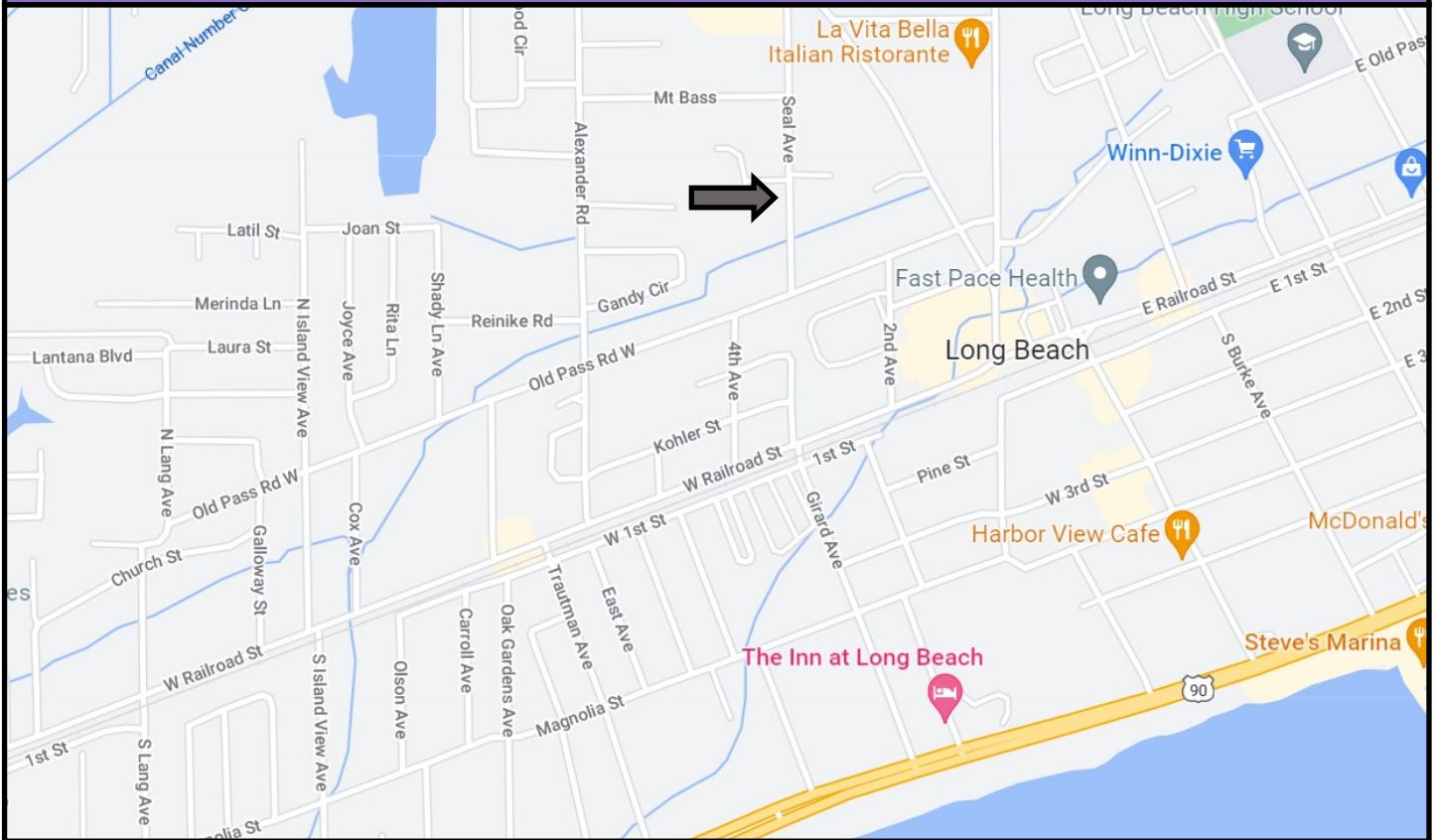


Expect More. Get More.

TomSmithLandandHomes.com

Information is believed to be accurate but not guaranteed.

Directional Map



Directions from the intersection of Hwy 90/Hwy 49 in Long Beach, MS: Travel west on Hwy 90 for 4 miles. Turn right onto S Girard Avenue. Travel 0.4 miles and turn left on W Railroad Street. Travel 430 feet and turn right onto 4th Avenue. Travel 0.2 miles and turn right onto Old Pass Road W. Travel 387 feet and turn left onto Seal Avenue. The home will be on the left in 100 feet.

Address: 324 Seal Avenue Long Beach, MS 39560



Call me today!

TARA WALKER SMITH, REALTOR®
Tara@TomSmithHomes.com
601.990.5070 **office** | 601.407.4315 **cell**



TomSmithLandandHomes.com

Information is believed to be accurate but not guaranteed.