

5.7± RESIDENTIAL ACRES IN JONES COUNTY, MS



\$45,000

Take a look at this 5.77± acre parcel in Jones County, MS, located in the town of Ellisville! You could build your dream home in an established neighborhood with beautiful lawns and large homes! This property has utilities close by as well. This property has beautiful mature trees that could tower your driveway to your home on the hill, overlooking trees that provide so much privacy. Deed restrictions do apply.

Directions from the intersection of W Pine St and Main St in Hattiesburg, MS: Travel 1.3 miles on Main St, turn left onto Hwy 42, in .2 miles, turn right onto Glendale Ave, in 1.3 miles, take a slight left to stay on Glendale Ave, in 6 miles, turn left onto MS-42W, in 1.5 miles, take a slight right to merge onto I-59N, in 18.1 miles, take Exit 88 for MS-29/MS-588 toward Ellisville, in .1 miles, turn left onto MS-29/Hill St, in .2 miles, continue straight onto Graves Rd, in 1.0 miles, turn right onto Merchant Cir/Merchants Park Cir, in .1 miles, turn left onto Merchants Park Cir, in .2 miles, the property will be on the left.



call me today!

TRINITY WEBB, REALTOR®

Trinity@TomSmithHomes.com

601.990.5070 office | 769.218.7860 cell



TomSmithLandandHomes.com

Information is believed to be accurate but not guaranteed.



TRINITY WEBB, REALTOR®
Trinity@TomSmithHomes.com
601.990.5070 office | 769.218.7860 cell



TomSmithLandandHomes.com

Information is believed to be accurate but not guaranteed.



TRINITY WEBB, REALTOR®
Trinity@TomSmithHomes.com
601.990.5070 office | 769.218.7860 cell



TomSmithLandandHomes.com

Information is believed to be accurate but not guaranteed.

AERIAL MAP



INTERACTIVE MAP



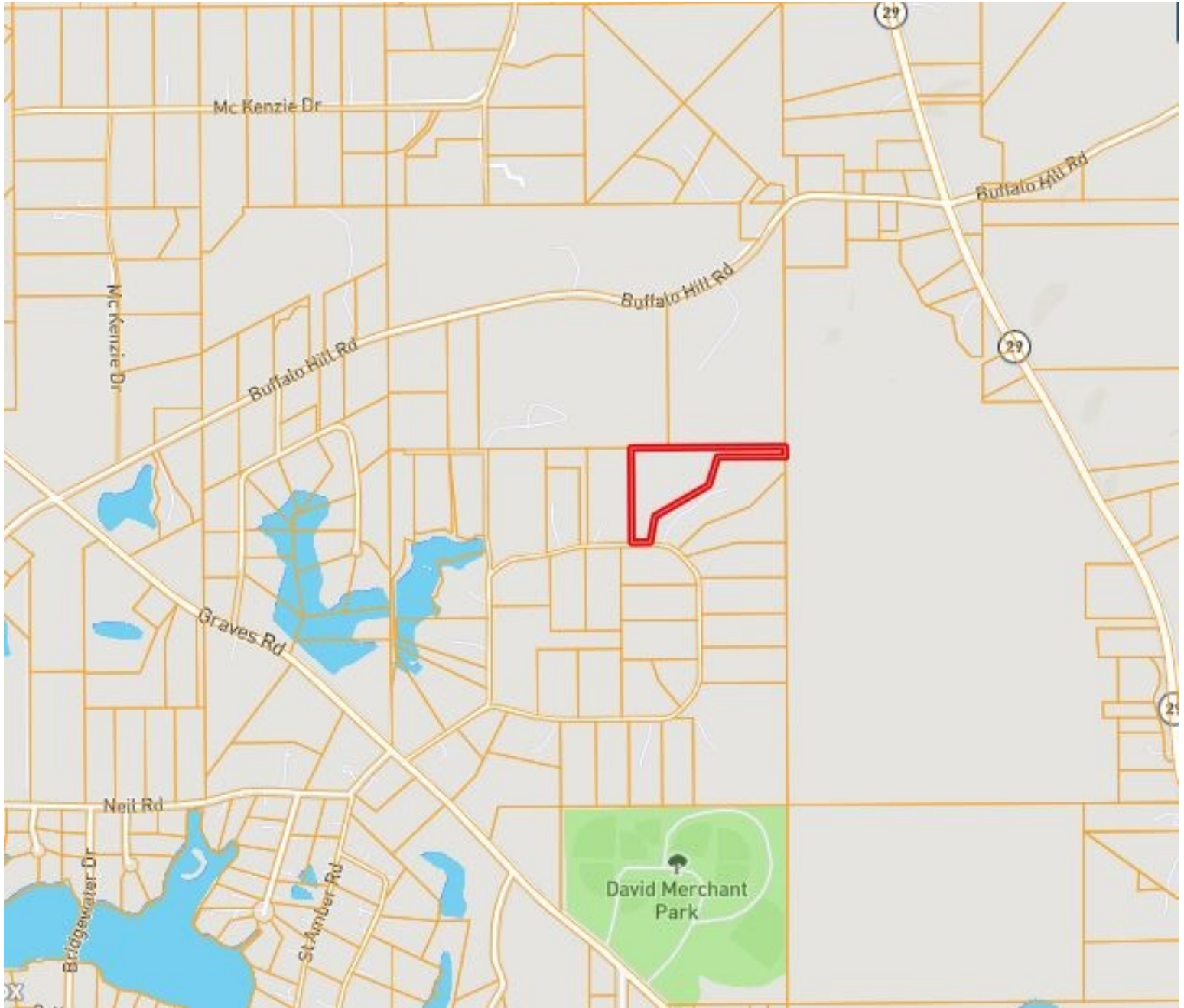
TRINITY WEBB, REALTOR®
Trinity@TomSmithHomes.com
601.990.5070 office | 769.218.7860 cell



TomSmithLandandHomes.com

Information is believed to be accurate but not guaranteed.

OWNERSHIP MAP



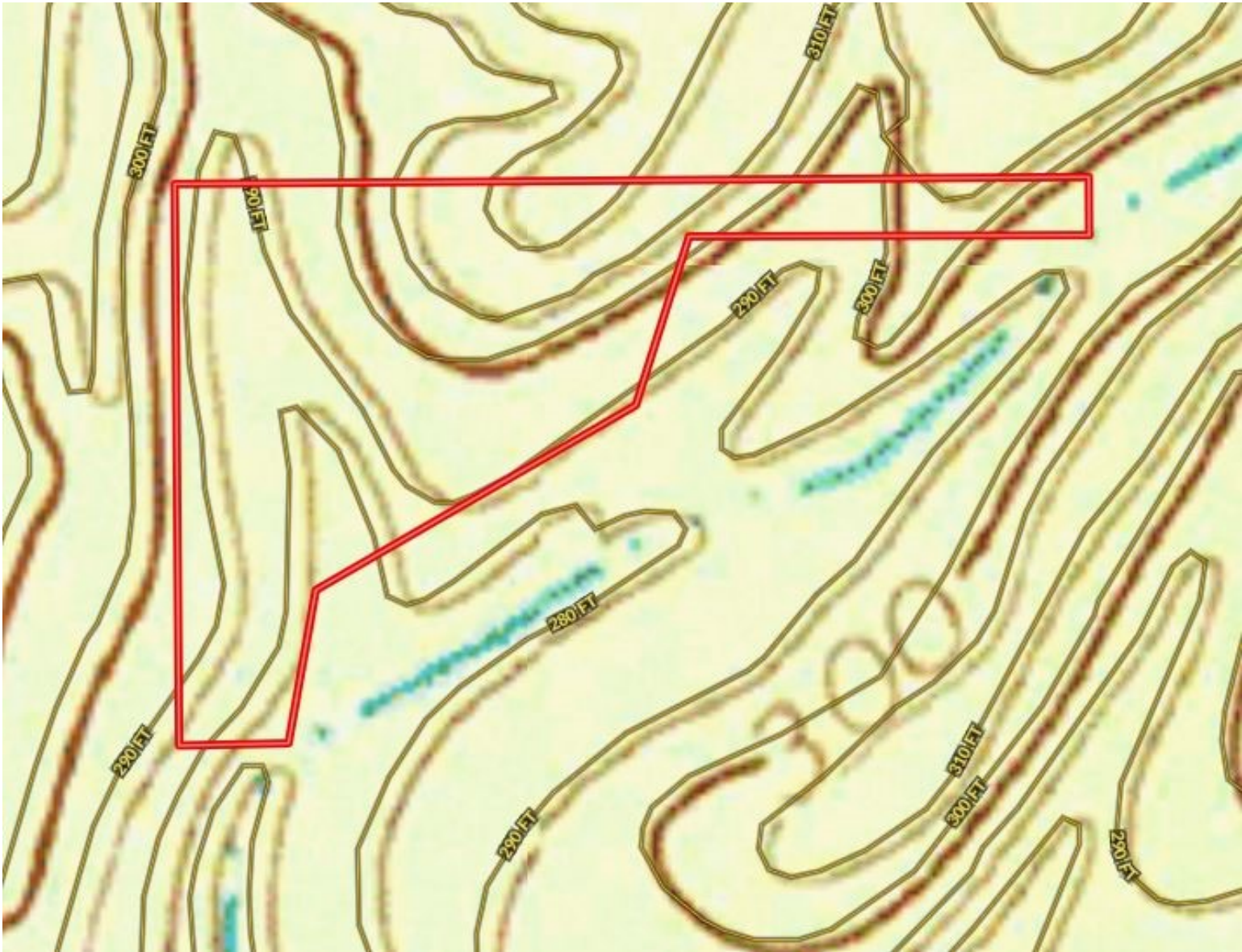
TRINITY WEBB, REALTOR®
Trinity@TomSmithHomes.com
601.990.5070 office | 769.218.7860 cell



TomSmithLandandHomes.com

Information is believed to be accurate but not guaranteed.

TOPO MAP



TRINITY WEBB, REALTOR®
Trinity@TomSmithHomes.com
601.990.5070 office | 769.218.7860 cell



TomSmithLandandHomes.com

Information is believed to be accurate but not guaranteed.

FLOOD MAP



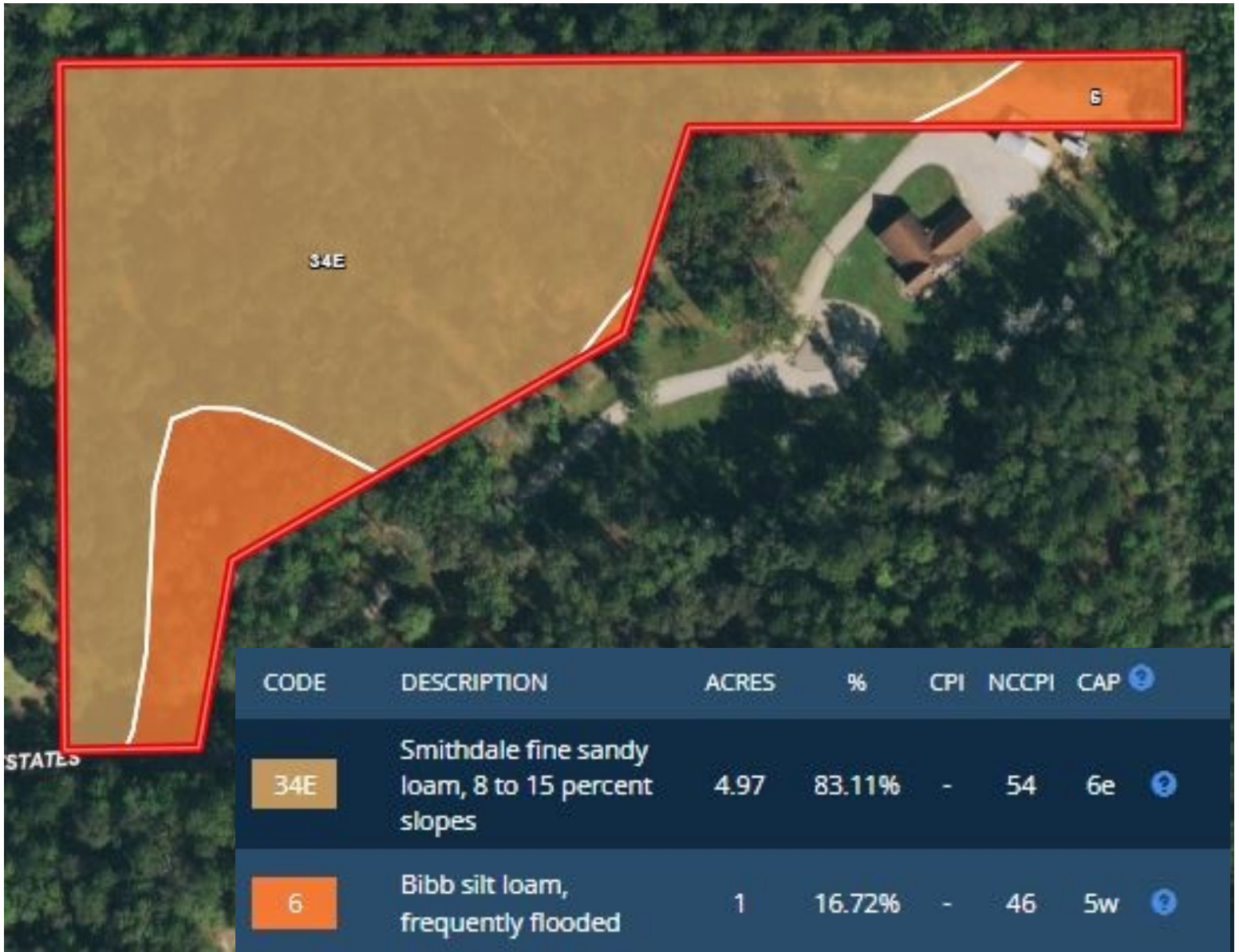
TRINITY WEBB, REALTOR®
Trinity@TomSmithHomes.com
601.990.5070 office | 769.218.7860 cell



TomSmithLandandHomes.com

Information is believed to be accurate but not guaranteed.

SOIL MAP



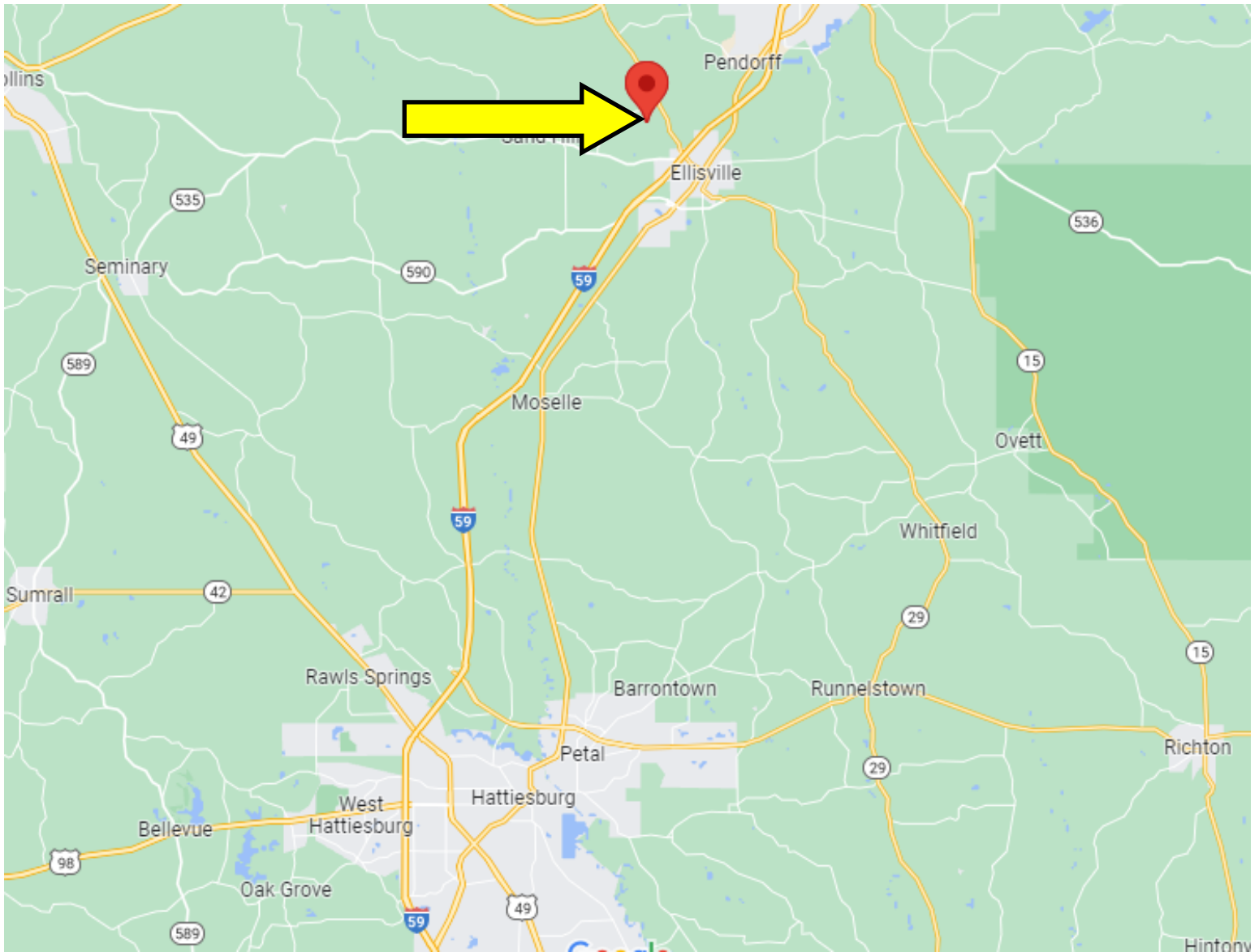
TRINITY WEBB, REALTOR®
 Trinity@TomSmithHomes.com
 601.990.5070 office | 769.218.7860 cell



TomSmithLandandHomes.com

Information is believed to be accurate but not guaranteed.

DIRECTIONAL MAP



Directions from the intersection of W Pine St and Main St in Hattiesburg, MS: Travel 1.3 miles on Main St, turn left onto Hwy 42, in .2 miles, turn right onto Glendale Ave, in 1.3 miles, take a slight left to stay on Glendale Ave, in 6 miles, turn left onto MS-42W, in 1.5 miles, take a slight right to merge onto I-59N, in 18.1 miles, take Exit 88 for MS-29/MS-588 toward Ellisville, in .1 miles, turn left onto MS-29/Hill St, in .2 miles, continue straight onto Graves Rd, in 1.0 miles, turn right onto Merchant Cir/Merchants Park Cir, in .1 miles, turn left onto Merchants Park Cir, in .2 miles, the property will be on the left.



TRINITY WEBB, REALTOR®
Trinity@TomSmithHomes.com
601.990.5070 office | 769.218.7860 cell



TomSmithLandandHomes.com

Information is believed to be accurate but not guaranteed.