



35+/- Acre Hunting/Home Site Lawrence County, MS



\$115,000

Are you looking for a place to build or hunt? This 35+/- acre property is conveniently located in the Jayess community on Hwy 44, just inside the Lawrence County, MS line. Having frontage on both Hwy 44 and Woody Road makes access to this property convenient and easy! Natural regeneration pine timber that is still fairly young covers this tract. The interior road is accessed from Woody Road and allows for easy walking or riding into the heart of the property. The land is level and high ground, so picking a homesite will be no problem. Located in the sought after Topeka School District, this property is sure to sell. The community water Jayess-Topeka-Tilton is available at the road, and Magnolia Electric is the electric provider. Call Eli today to schedule a viewing!

Directions from the intersection of Hwy 570/Robb Street in Summit, MS: Travel 8.8 miles on Hwy 570. Turn right onto W Topisaw Road and travel .6 miles. Turn left onto Turnpike Road and travel 1.1 miles. Turn left onto C D Rayborn Road and travel 4.1 Miles. Turn left onto Hwy 583 and travel 900 feet. Turn right onto Hwy 44 and in approximately 1 mile the property will be on your left.



call me today!

ELI FERGUSON, REALTOR®
Eli@TomSmithLand.com
601.990.5070 office | 601.757.7117 cell



TomSmithLandandHomes.com

Information is believed to be accurate but not guaranteed.



Call me today!

ELI FERGUSON, REALTOR®
Eli@TomSmithLand.com
601.990.5070 office | 601.757.7117 cell



TomSmithLandandHomes.com

Information is believed to be accurate but not guaranteed.



Aerial Map

[Click for Interactive Map](#)



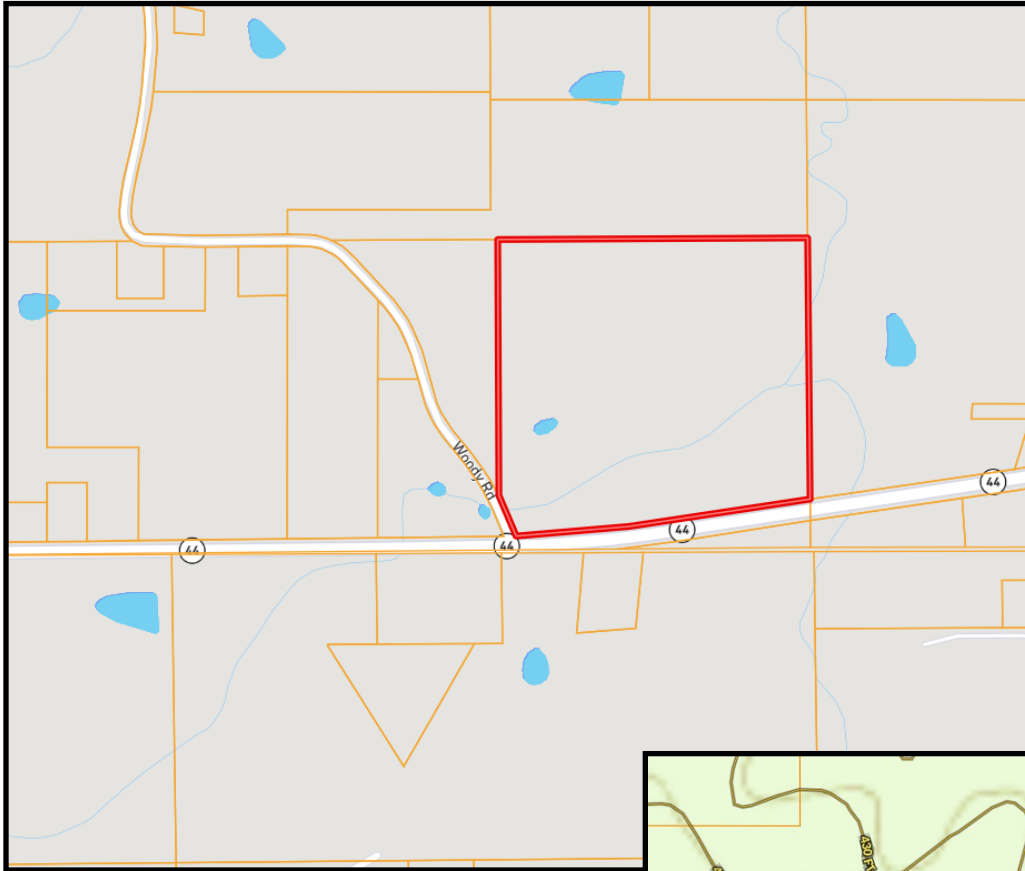
Call me today!

ELI FERGUSON, REALTOR®
Eli@TomSmithLand.com
601.990.5070 office | 601.757.7117 cell

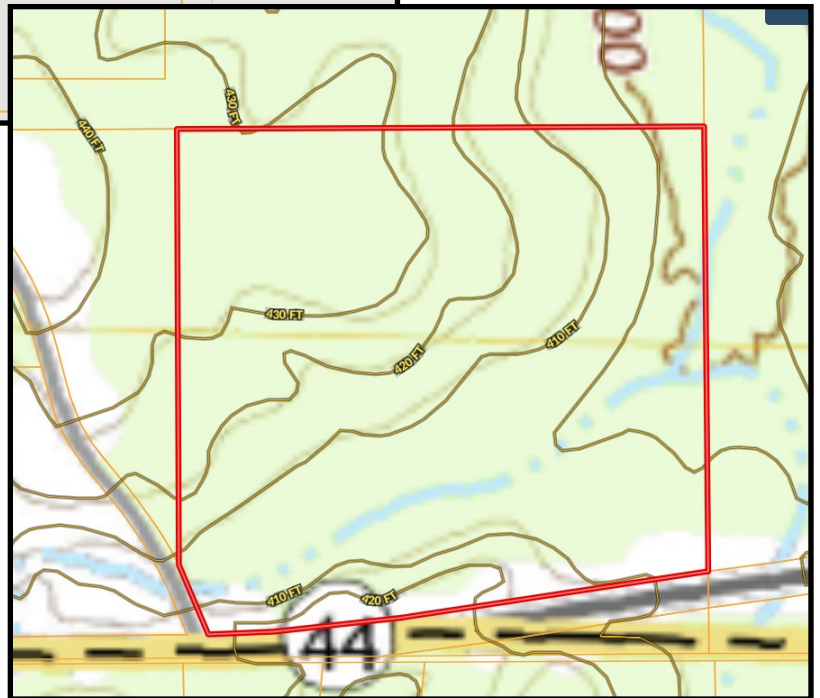


TomSmithLandandHomes.com

Information is believed to be accurate but not guaranteed.



Ownership Map



Topo Map



Call me today!

ELI FERGUSON, REALTOR®

Eli@TomSmithLand.com

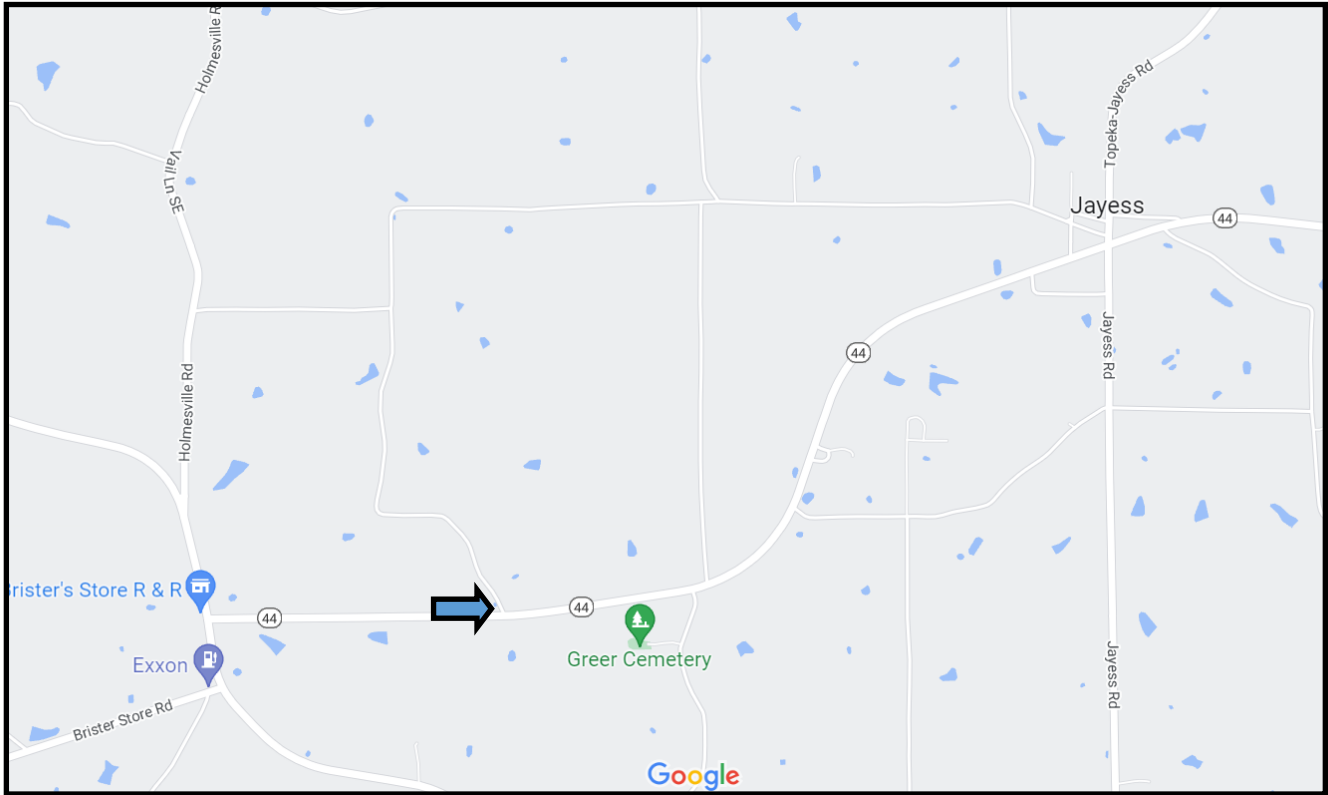
601.990.5070 office | 601.757.7117 cell



Expect More. Get More.

TomSmithLandandHomes.com

Information is believed to be accurate but not guaranteed.



Directional Map

Directions from the intersection of Hwy 570/Robb Street in Summit, MS: Travel 8.8 miles on Hwy 570. Turn right onto W Topisaw Road and travel .6 miles. Turn left onto Turnpike Road and travel 1.1 miles. Turn left onto C D Rayborn Road and travel 4.1 Miles. Turn left onto Hwy 583 and travel 900 feet. Turn right onto Hwy 44 and in approximately 1 mile the property will be on your left.



Call me today!

ELI FERGUSON, REALTOR®
 Eli@TomSmithLand.com
 601.990.5070 office | 601.757.7117 cell



TomSmithLandandHomes.com

Information is believed to be accurate but not guaranteed.