

.65+/- Acre lot in Copiah County, MS



8th Street
Wesson, MS 39191

\$15,000

If you are looking for an opportunity to build in the Wesson School District of Copiah County, MS, here it is. This .65+/- acre lot is located just minutes from MS-51 in Wesson. This great lot has plenty of room to build your dream home, and its close proximity to schools and business areas make it very desirable. Call Clif Cannon today to schedule a viewing.

From the intersection of Interstate 55 and Sylverina Road in Wesson, MS: Travel east on Sylverina Road for 3.8 miles. Turn left onto US-51 and travel for 300 ft. Turn right onto Stonewall Street and travel for 375 Ft. Turn left onto Main Street / 8th Street and travel .25 miles. The property will be on the right.



call me today!

CLIF CANNON, REALTOR®

Clif@TomSmithLand.com

601.990.5070 office | 601.565.1070 cell



Expect More. Get More.

TomSmithLandandHomes.com

Information is believed to be accurate but not guaranteed.



CLIF CANNON, REALTOR®

Clif@TomSmithLand.com

601.990.5070 office | 601.565.1070 cell



Expect More. Get More.

TomSmithLandandHomes.com

Information is believed to be accurate but not guaranteed.

Aerial Map



.65+/- Acres

31.7028, -90.3808



CLIF CANNON, REALTOR®
Clif@TomSmithLand.com
601.990.5070 office | 601.565.1070 cell



Expect More. Get More.

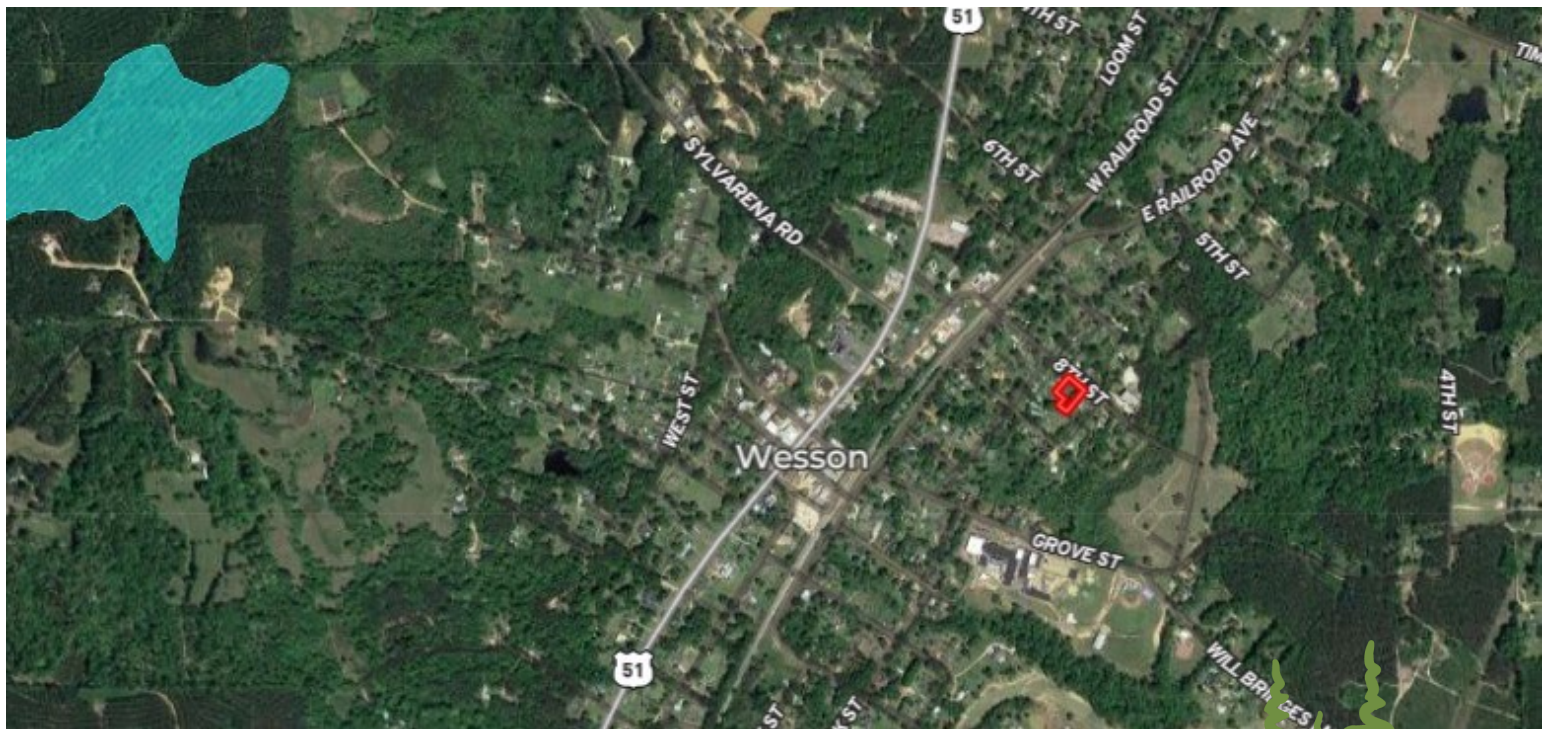
TomSmithLandandHomes.com

Information is believed to be accurate but not guaranteed.

Ownership Map



Flood Map

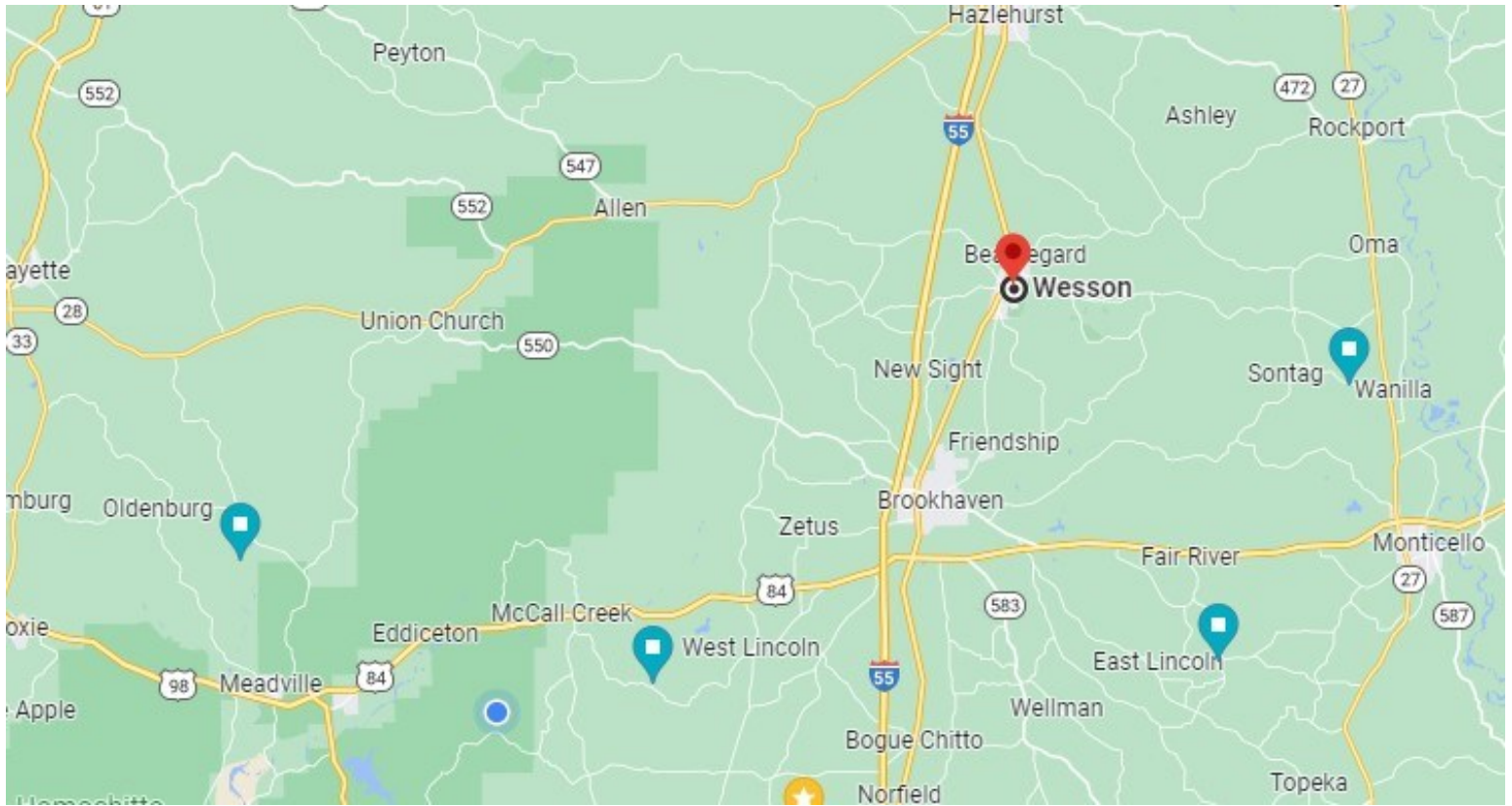


CLIF CANNON, REALTOR®
Clif@TomSmithLand.com
601.990.5070 office | 601.565.1070 cell



TomSmithLandandHomes.com

Information is believed to be accurate but not guaranteed.



Directional Map

From the intersection of Interstate 55 and Sylverina Road in Wesson, MS: Travel east on Sylverina Road for 3.8 miles. Turn left onto US-51 and travel for 300 ft. Turn right onto Stonewall Street and travel for 375 Ft. Turn left onto Main Street / 8th Street and travel .25 miles. The property will be on the right.

8th Street, Wesson, MS 39191



CLIF CANNON, REALTOR®
Clif@TomSmithLand.com
601.990.5070 office | 601.565.1070 cell



TomSmithLandandHomes.com

Information is believed to be accurate but not guaranteed.