

Beautiful Homesite with Pond

8.99± acres in Madison County, MS



Looking for the perfect place to build your forever home, this Madison County tract is it! This rare find is located in a fabulous area of Madison County and is priced to sell. This beautiful 8.99± surveyed acre tract offers a serene setting overlooking your fishing pond and mature hardwoods. It's very private with plenty of acreage to enjoy country living. The property is conveniently located 3 miles from the Natchez Trace Parkway on Lone Pine Road, making a commute to Ridgeland & other area's a delight and access to I-55 a quick route. All utilities are available with Restrictive Covenants in place.

Directions from the Natchez Trace Parkway and Ratliff Ferry Road: Turn left off of the Parkway on to Ratliff Ferry Road and travel 3 miles. Turn left on Lone Pine Road. After approximately 500 feet, the property will be on your right. [Google Map Link](#)



Call The Land Man Today!

TOM SMITH, ALC®, BROKER
Tom@TomSmithLand.com
601.898.2772 **office** | 601.454.9397 **cell**

112 Village Blvd, Madison, MS 39110



Expect More. Get More.

TomSmithLandandHomes.com

Information is believed to be accurate but not guaranteed.



TOM SMITH, ALC®, BROKER
 Tom@TomSmithLand.com
 601.898.2772 office | 601.454.9397 cell



Expect More. Get More.

TomSmithLandandHomes.com

Information is believed to be accurate but not guaranteed.



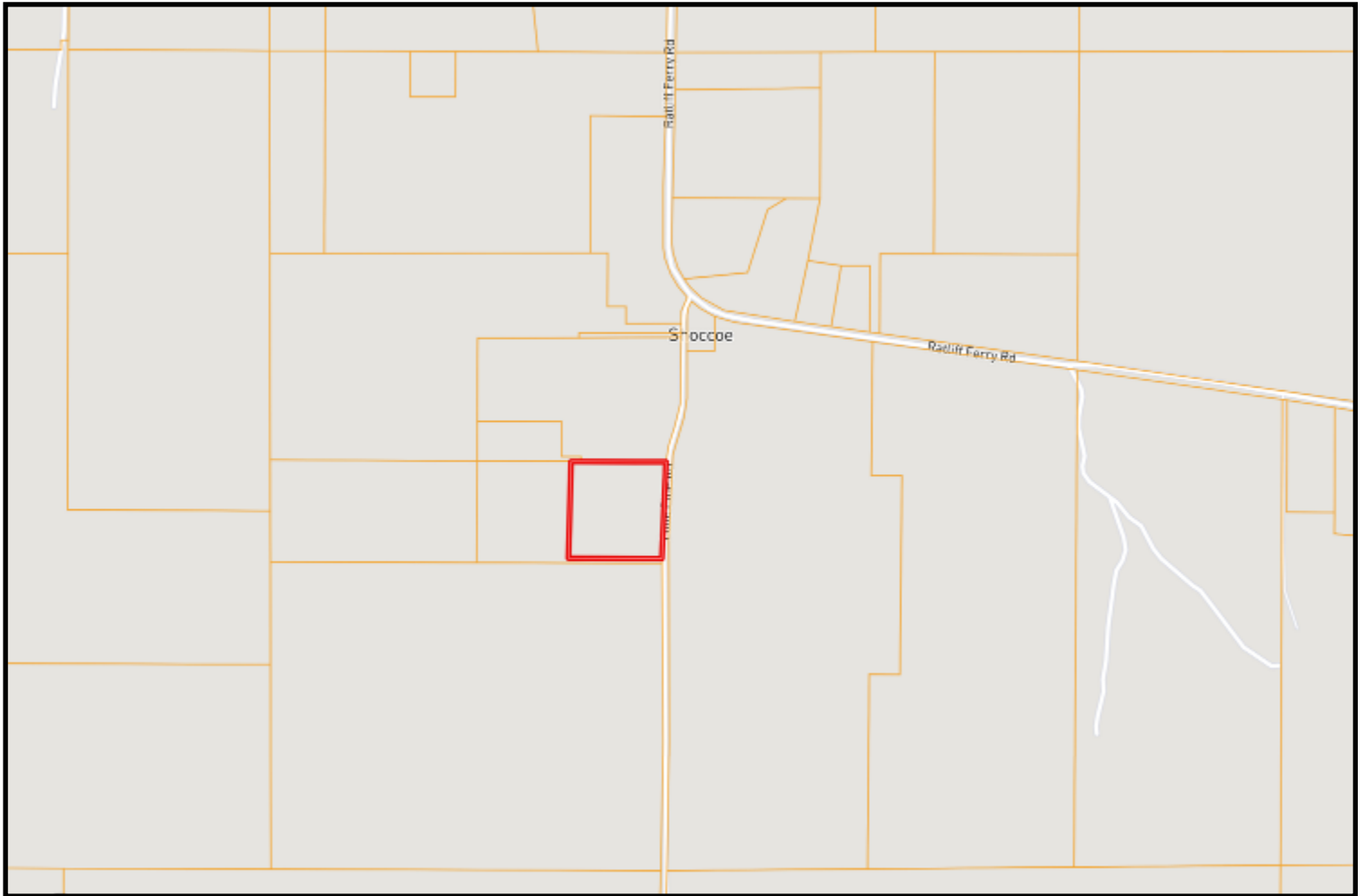
TOM SMITH, ALC®, BROKER
 Tom@TomSmithLand.com
 601.898.2772 office | 601.454.9397 cell



TomSmithLandandHomes.com

Information is believed to be accurate but not guaranteed.

Ownership Map



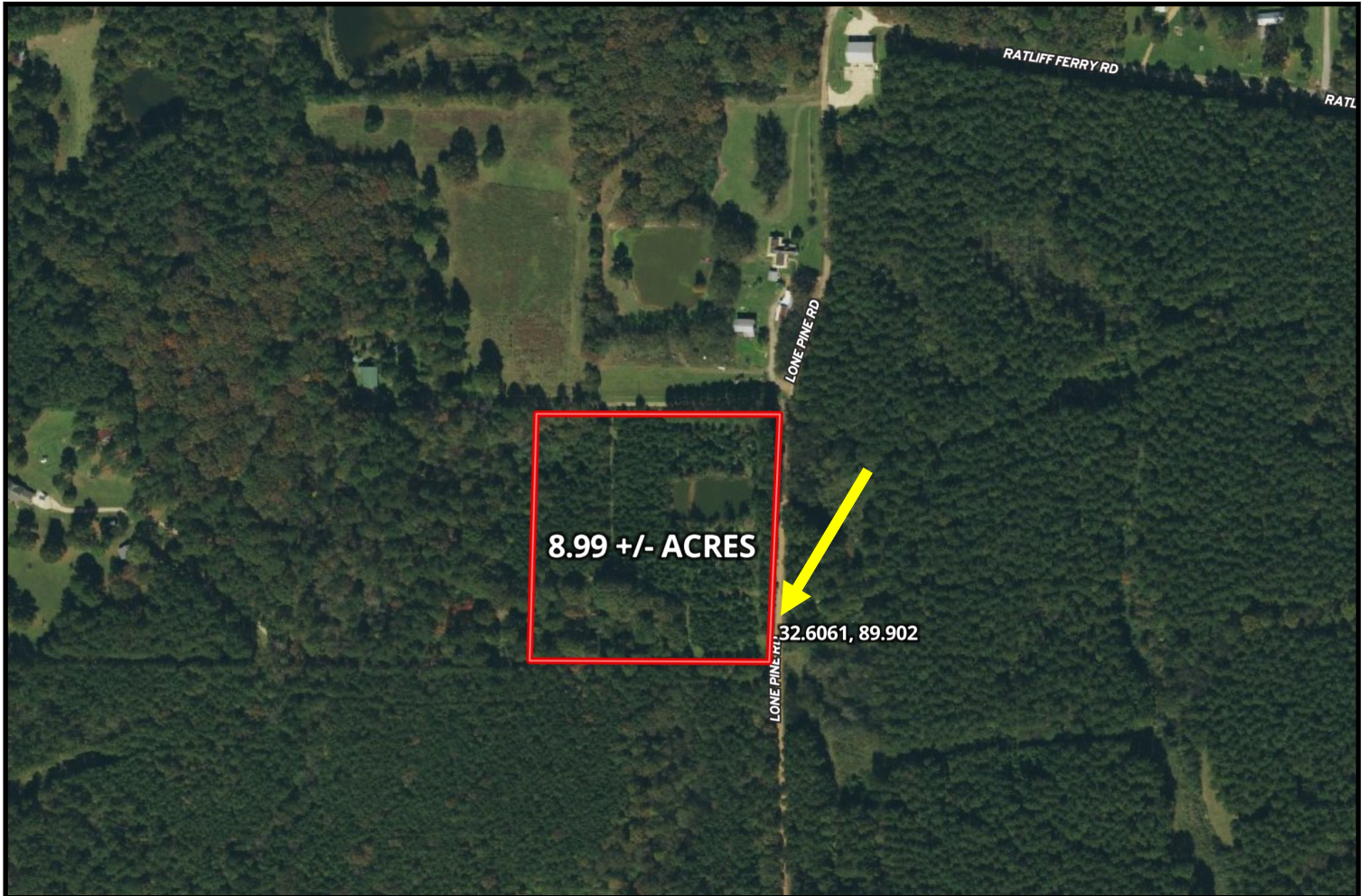
TOM SMITH, ALC®, BROKER
Tom@TomSmithLand.com
601.898.2772 office | 601.454.9397 cell



TomSmithLandandHomes.com

Information is believed to be accurate but not guaranteed.

Aerial Map



[Click Here for an Interactive Map](#)



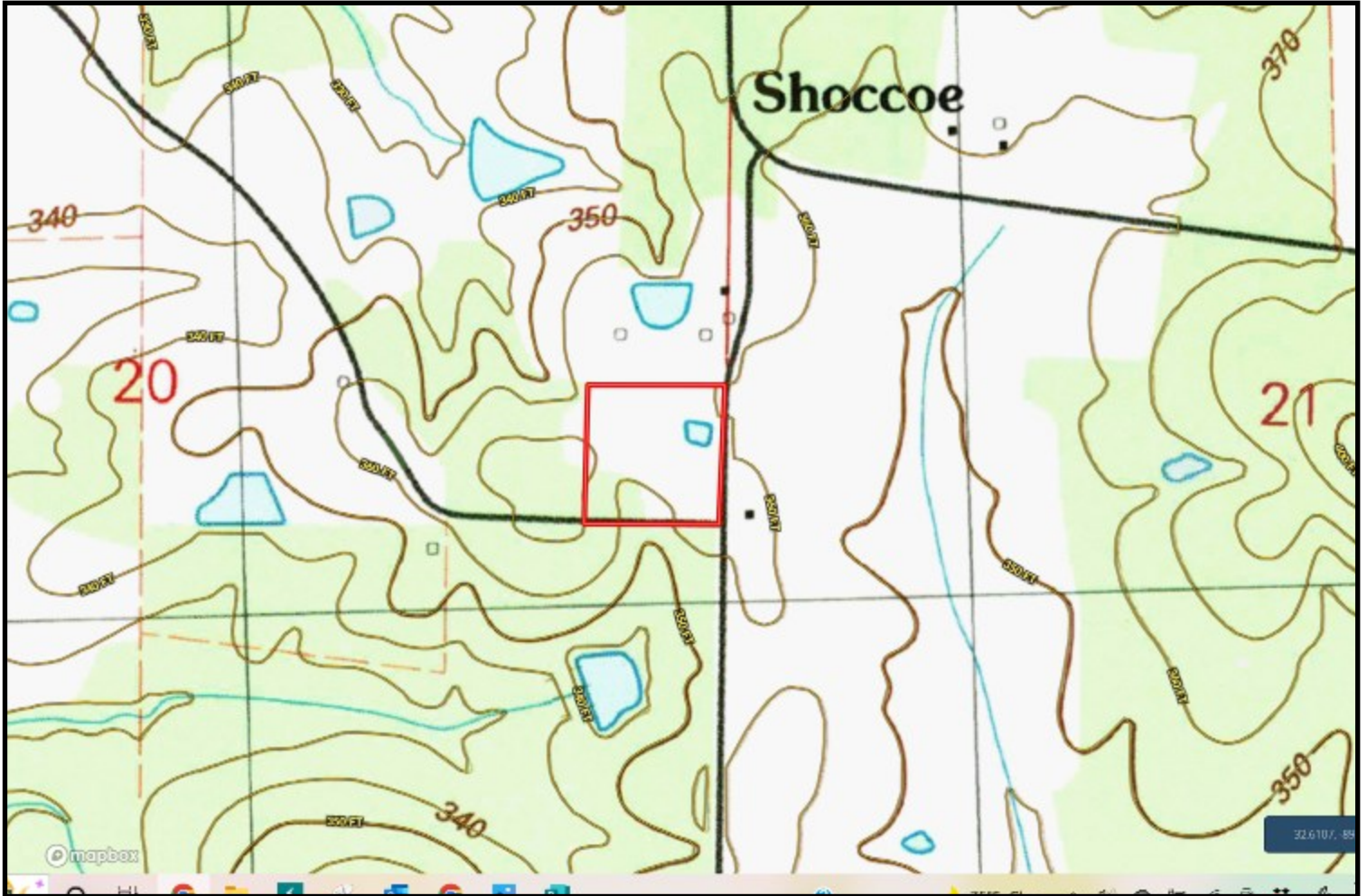
TOM SMITH, ALC®, BROKER
Tom@TomSmithLand.com
601.898.2772 **office** | 601.454.9397 **cell**



TomSmithLandandHomes.com

Information is believed to be accurate but not guaranteed.

Topo Map



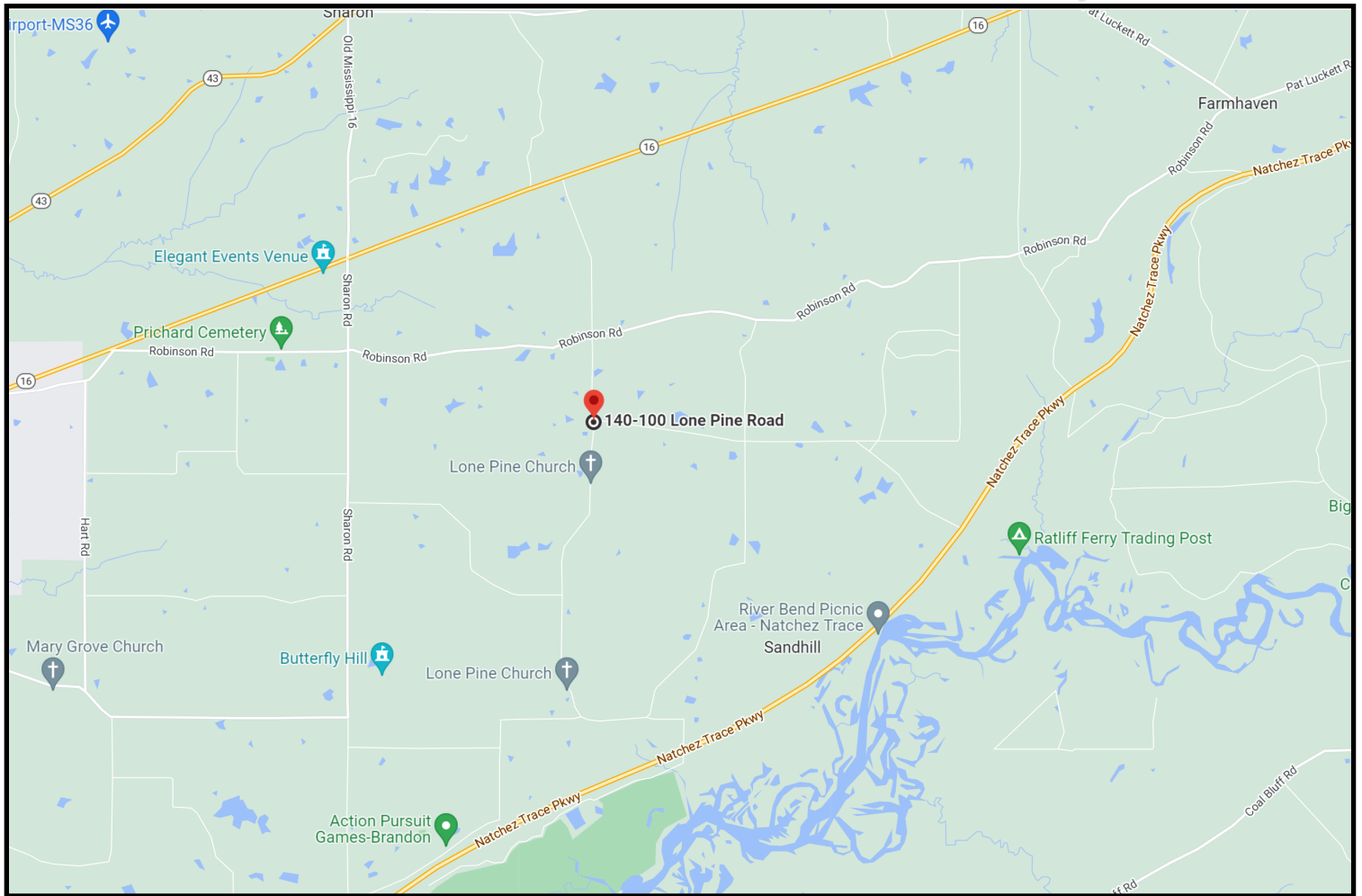
TOM SMITH, ALC®, BROKER
Tom@TomSmithLand.com
601.898.2772 office | 601.454.9397 cell



TomSmithLandandHomes.com

Information is believed to be accurate but not guaranteed.

Directional Map



Directions from the Natchez Trace Parkway and Ratliff Ferry Road: Turn left off of the Parkway on to Ratliff Ferry Road and travel 3 miles. Turn left on Lone Pine Road. After approximately 500 feet, the property will be on your right.

[Google Map Link](#)



Call The Land Man Today!

TOM SMITH, ALC®, BROKER
Tom@TomSmithLand.com
601.898.2772 **office** | 601.454.9397 **cell**

112 Village Blvd, Madison, MS 39110



Expect More. Get More.

TomSmithLandandHomes.com

Information is believed to be accurate but not guaranteed.