

4.37± ACRE RESIDENTIAL LOT IN HARRISON COUNTY, MS



\$130,000

Check out this 4.37± acre tract in Gulfport, MS! This property would make an excellent homesite with plenty of space to stretch out and have a huge yard! In addition, the property has plenty of road frontage on two separate roads, North Swan Road and Hatten Lane, giving you multiple points for access. The property is located less than 30 minutes from the city limits of Gulfport and Biloxi and approximately 1 hour from New Orleans, Louisiana.

Directions from the intersection of US-49 and US-90 in Gulfport, MS: Travel north on US-49N/25th Ave for 9.4 miles, turn right onto N Swan Rd, in 1.5 miles, turn right onto Hatten Ln, the property will be on the right. The property has road frontage on N Swan Rd and Hatten Ln.



Call me today!

PRESTON SMITH, MANAGING BROKER
Preston@TomSmithLand.com
601.990.5070 office | 601.209.7150 cell



TomSmithLandandHomes.com

Information is believed to be accurate but not guaranteed.



PRESTON SMITH, MANAGING BROKER
 Preston@TomSmithLand.com
 601.990.5070 office | 601.209.7150 cell



TomSmithLandandHomes.com

Information is believed to be accurate but not guaranteed.



PRESTON SMITH, MANAGING BROKER
 Preston@TomSmithLand.com
 601.990.5070 office | 601.209.7150 cell



TomSmithLandandHomes.com

Information is believed to be accurate but not guaranteed.

Aerial Map



INTERACTIVE MAP



PRESTON SMITH, MANAGING BROKER
Preston@TomSmithLand.com
601.990.5070 office | 601.209.7150 cell



TomSmithLandandHomes.com

Information is believed to be accurate but not guaranteed.

Ownership Map



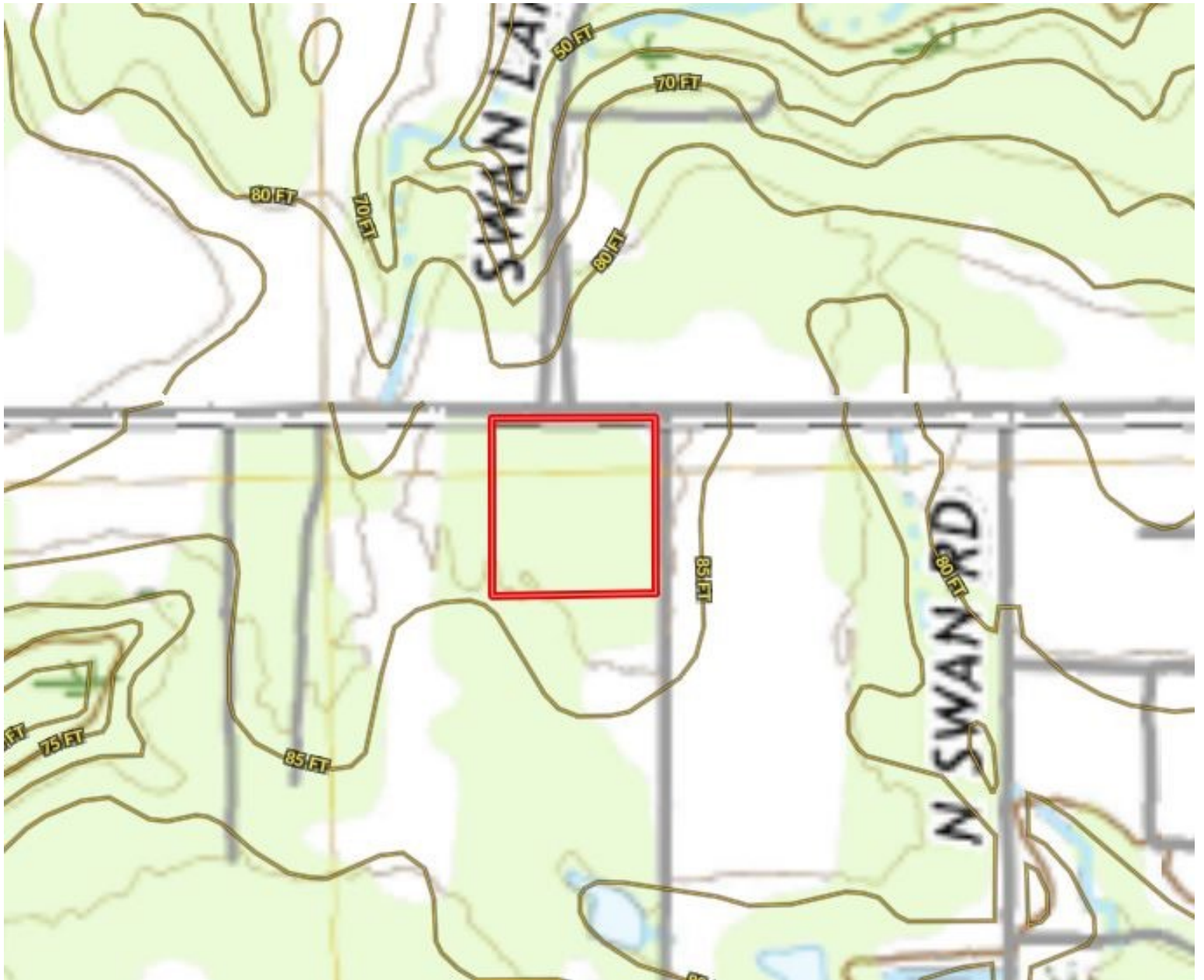
PRESTON SMITH, MANAGING BROKER
Preston@TomSmithLand.com
601.990.5070 office | 601.209.7150 cell



TomSmithLandandHomes.com

Information is believed to be accurate but not guaranteed.

Topography Map



PRESTON SMITH, MANAGING BROKER
Preston@TomSmithLand.com
601.990.5070 office | 601.209.7150 cell



TomSmithLandandHomes.com

Information is believed to be accurate but not guaranteed.

Flood Map



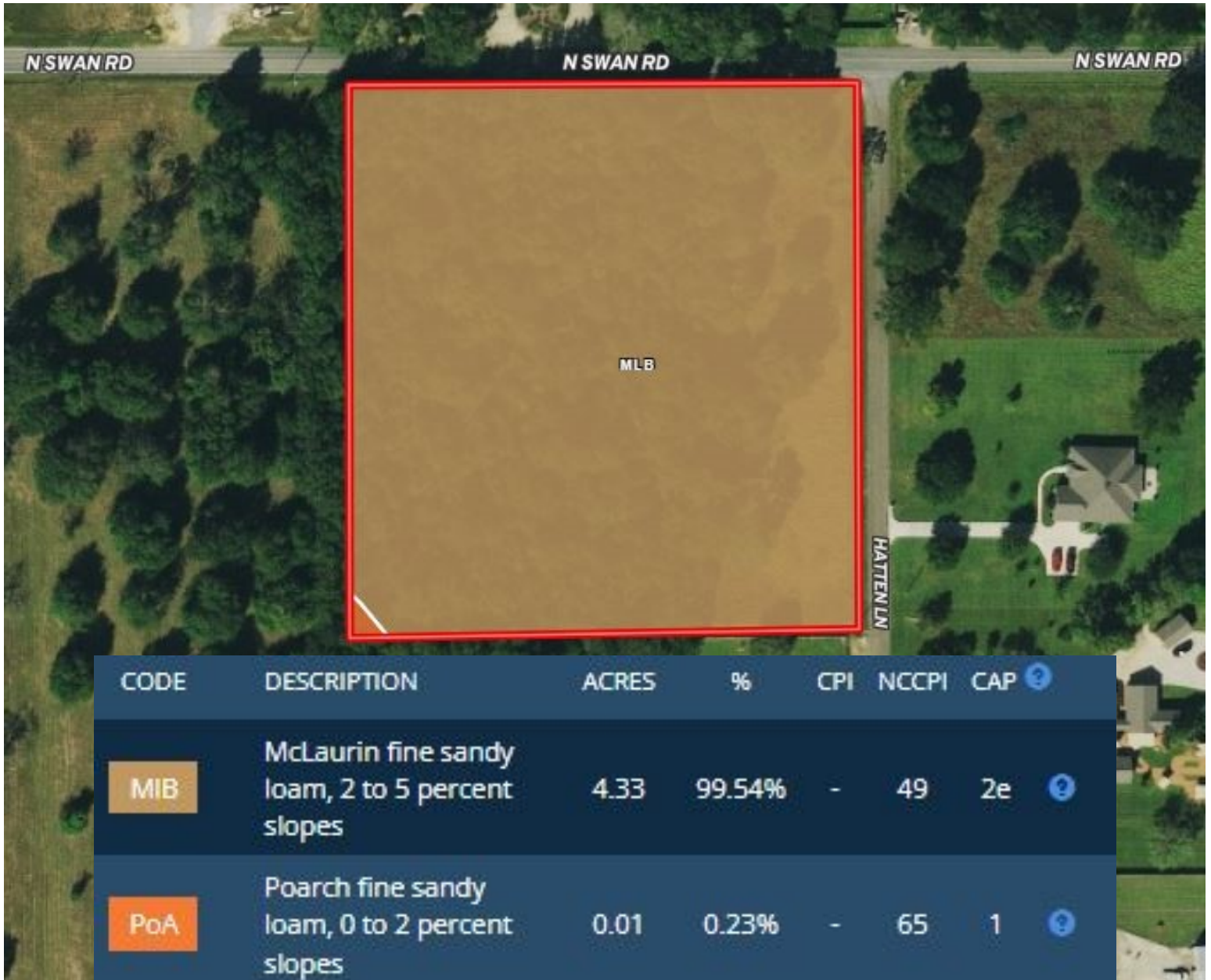
PRESTON SMITH, MANAGING BROKER
Preston@TomSmithLand.com
601.990.5070 office | 601.209.7150 cell



TomSmithLandandHomes.com

Information is believed to be accurate but not guaranteed.

Soil Map



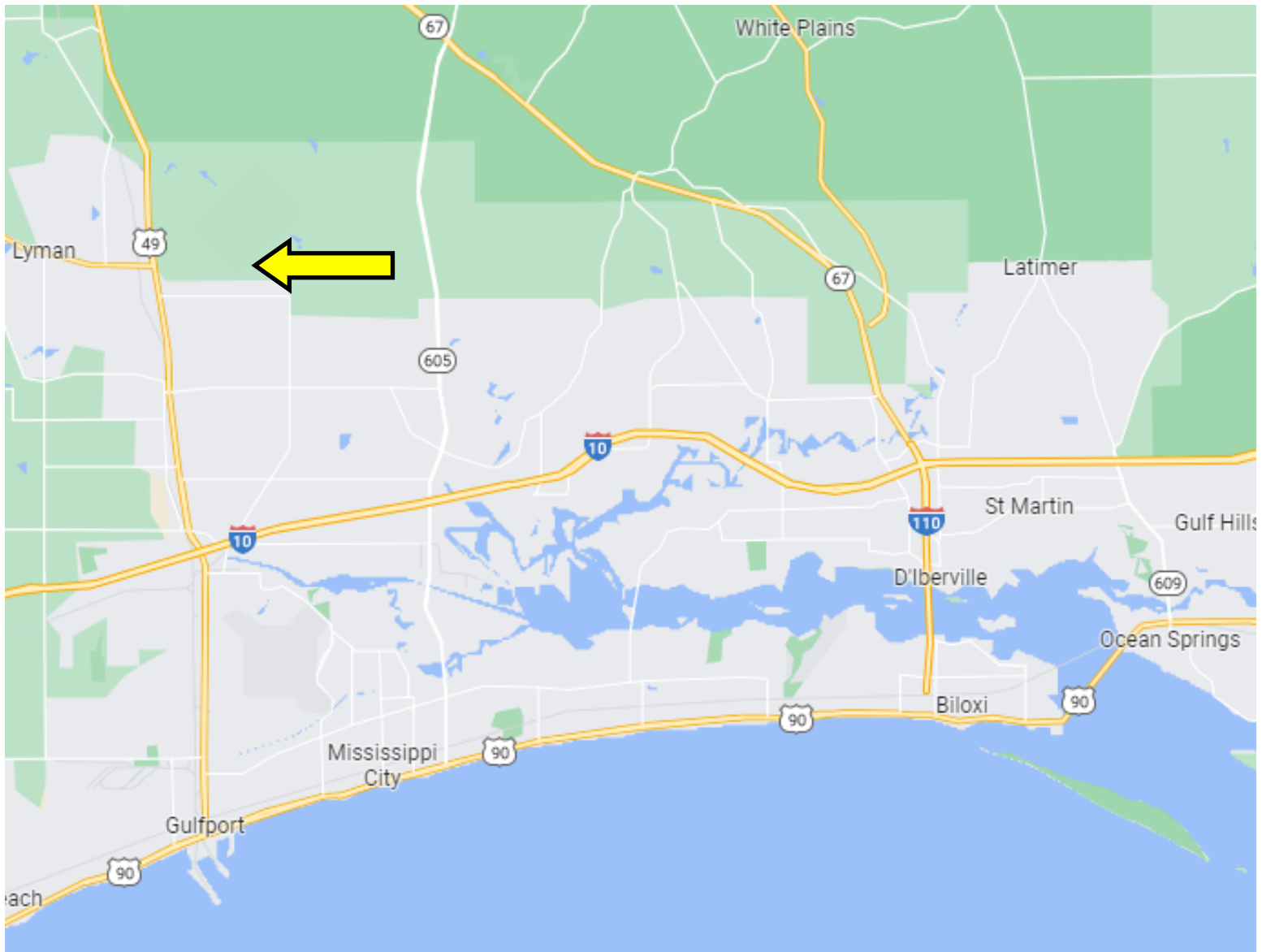
PRESTON SMITH, MANAGING BROKER
 Preston@TomSmithLand.com
 601.990.5070 office | 601.209.7150 cell



TomSmithLandandHomes.com

Information is believed to be accurate but not guaranteed.

Directional Map



Directions from the intersection of US-49 and US-90 in Gulfport, MS: Travel north on US-49N/25th Ave for 9.4 miles, turn right onto N Swan Rd, in 1.5 miles, turn right onto Hatten Ln, the property will be on the right. The property has road frontage on N Swan Rd and Hatten Ln.



PRESTON SMITH, MANAGING BROKER
Preston@TomSmithLand.com
601.990.5070 office | 601.209.7150 cell



TomSmithLandandHomes.com

Information is believed to be accurate but not guaranteed.