

Home in Cleveland

Bolivar County, MS



714 Harvard Cleveland, MS 38732

Check out this charming home located in Cleveland, MS! This 1352+/- square foot home features three bedrooms and two full bathrooms. As soon as you enter the door, you will notice the beautiful hardwood floors, brick steps, and cozy living area! This .21+/- acre corner lot offers plenty of room for outdoor entertaining! This home is located within minutes of everything Cleveland has to offer. Call Amber Smith today to schedule your private viewing!

Directions from the Intersection of Hwy 8 and Hwy 61 in Cleveland, MS: Travel west on Hwy 8 towards North Chrisman Avenue for approximately 1 mile. Turn left onto North 5th Avenue for approximately .9 mile. Turn left onto Harvard Street and the destination will be on the left in approximately .1 mile.

Address: 714 Harvard Street Cleveland, MS 38732



Call me today!

AMBER SMITH, REALTOR®
Amber@TomSmithLand.com
662.441.2500 **office** | 662.719.1978 **cell**



TomSmithLandandHomes.com

Information is believed to be accurate but not guaranteed.



LandReport
2011-2021
AMERICA'S
BEST
BROKERAGES

Call me today!

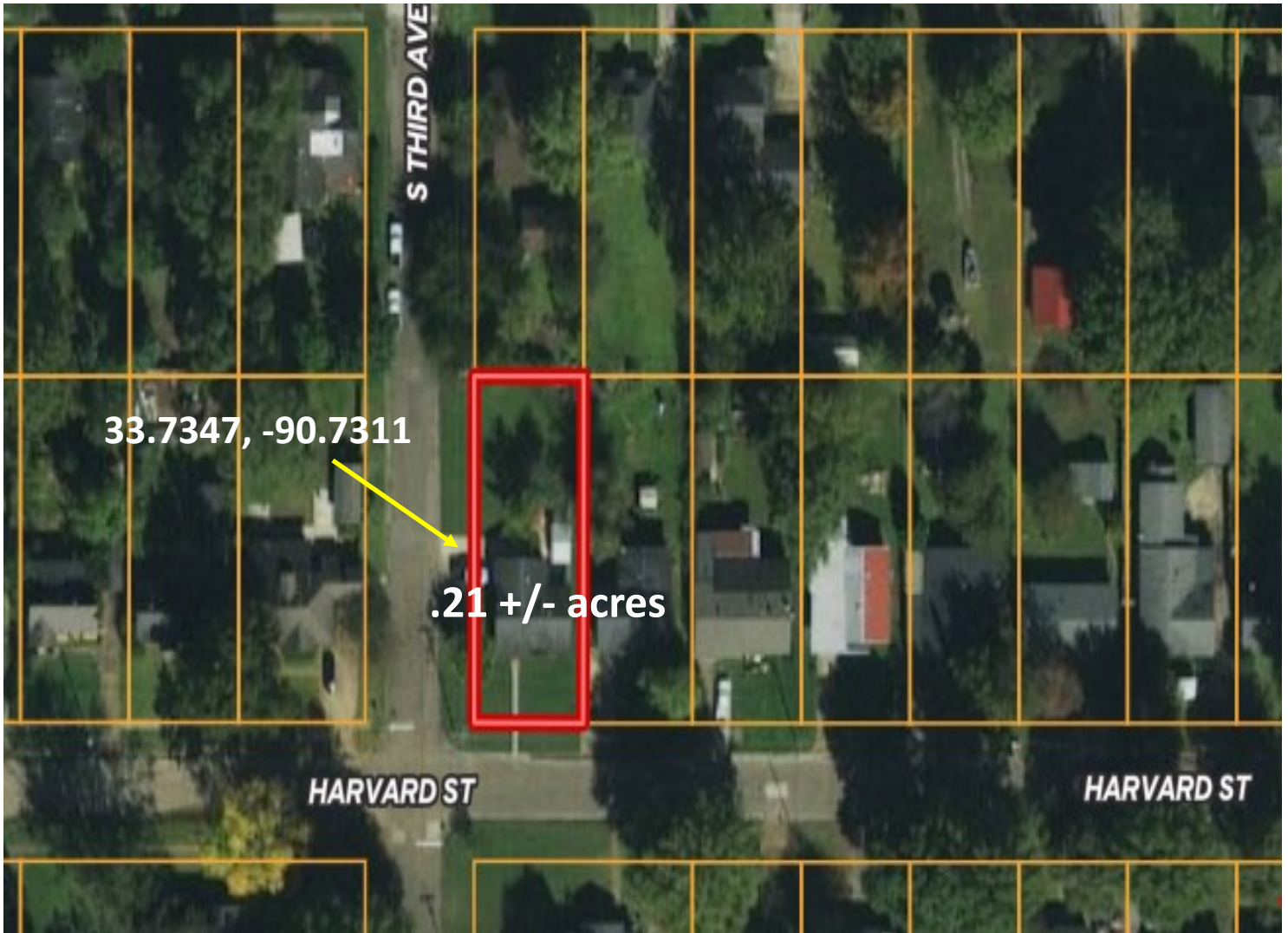
AMBER SMITH, REALTOR®
Amber@TomSmithLand.com
662.441.2500 office | 662.719.1978 cell

**Tom
Smith
LAND AND
HOMES**
Expect More. Get More.

TomSmithLandandHomes.com

Information is believed to be accurate but not guaranteed.

AERIAL MAP



[Click for Interactive Map](#)



Call me today!

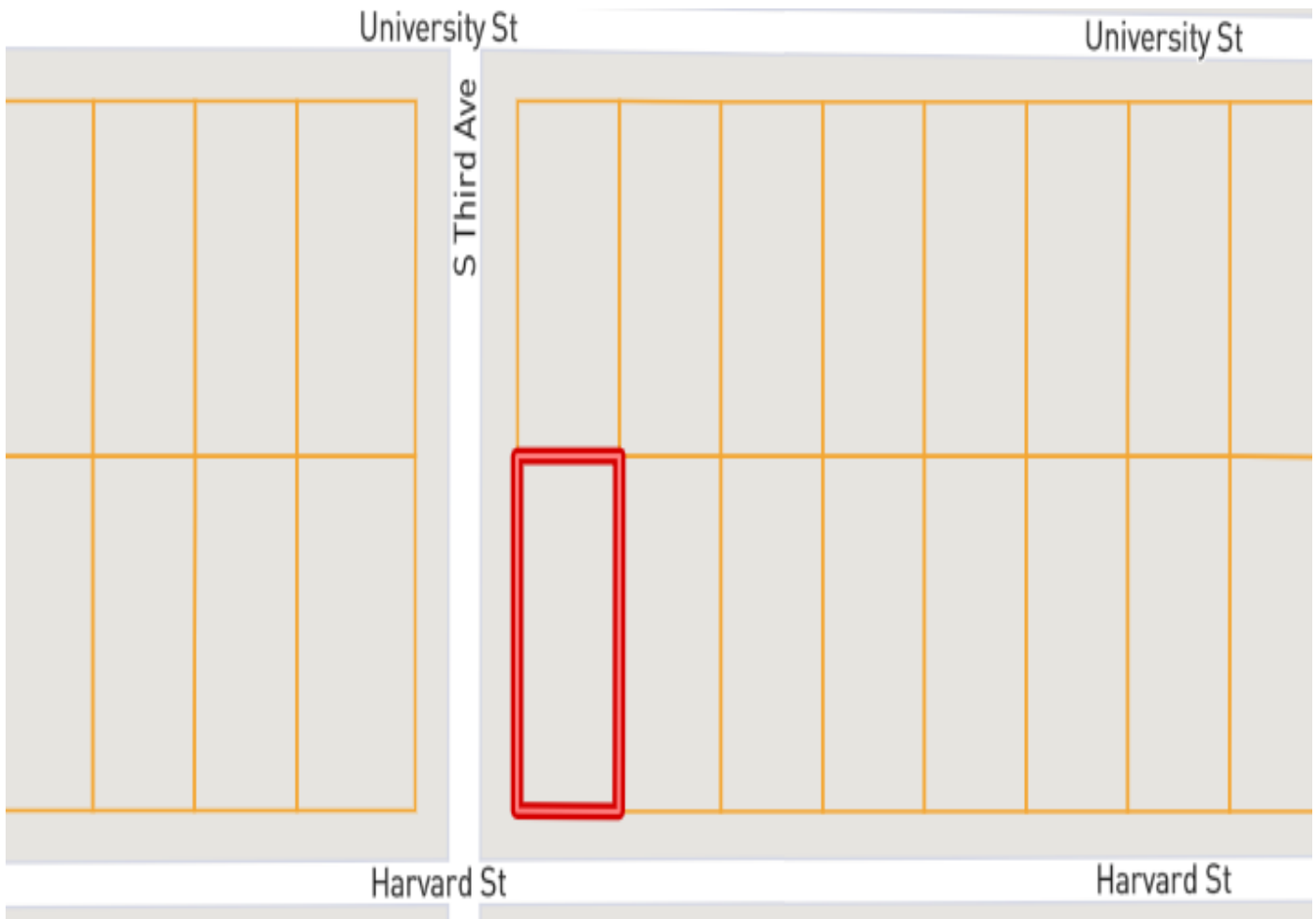
AMBER SMITH, REALTOR®
Amber@TomSmithLand.com
662.441.2500 **office** | 662.719.1978 **cell**



TomSmithLandandHomes.com

Information is believed to be accurate but not guaranteed.

OWNERSHIP MAP



LandReport
2011-2021
AMERICA'S
BEST
BROKERAGES

Call me today!

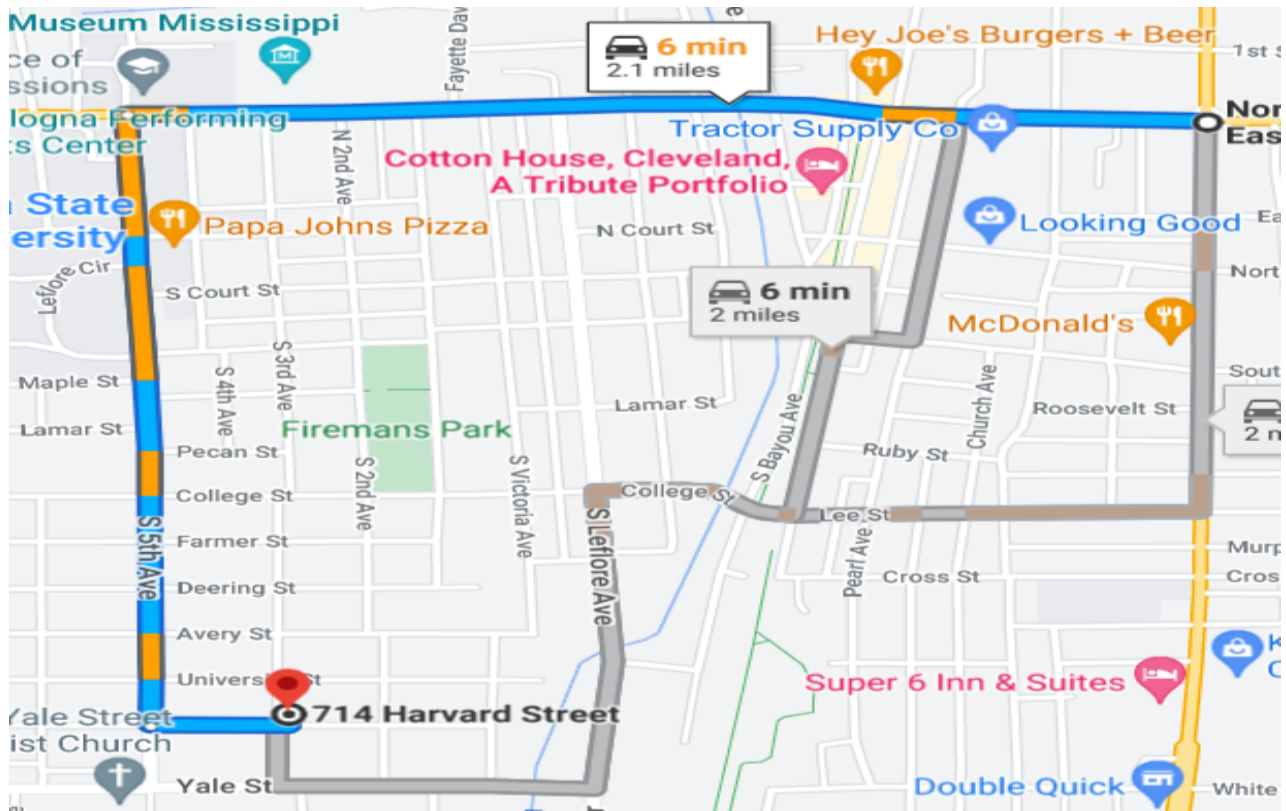
AMBER SMITH, REALTOR®
Amber@TomSmithLand.com
662.441.2500 **office** | 662.719.1978 **cell**



TomSmithLandandHomes.com

Information is believed to be accurate but not guaranteed.

DIRECTIONAL MAP



Directions from the Intersection of Hwy 8 and Hwy 61 in Cleveland, MS: Travel west on Hwy 8 towards North Chrisman Avenue for approximately 1 mile. Turn left onto North 5th Avenue for approximately .9 mile. Turn left onto Harvard Street and the destination will be on the left in approximately .1 mile.

Address: 714 Harvard Street Cleveland, MS 38732

[Click for Google Maps](#)



Call me today!

AMBER SMITH, REALTOR®
Amber@TomSmithLand.com
662.441.2500 **office** | 662.719.1978 **cell**



Expect More. Get More.

TomSmithLandandHomes.com

Information is believed to be accurate but not guaranteed.