

16.5± WOODED ACRE HOMESITE IN LAWRENCE COUNTY, MS



\$69,900

This 16.5± acre property in Lawrence County, MS, has everything you need! This property has a concrete foundation in place (from an old homesite), driveway, culverts, mailbox, electricity pole, and community water! There is also a pond that you can stick a fishing pole in during the summer months to catch a bite! The concrete foundation housed an approximately 1,700 sqft house previously, so you can use it to pull a mobile home onto or use it for a new foundation! Close proximity to Highway 84 for easy commutes to nearby towns/cities. The property has a great, flat yard that can be restored to a beautiful lawn with mature trees with a little work. Lots of potential here!

Directions from the intersection of US-84 and MS-43A in Silver Creek, MS: Travel south on MS-43A, in 5.6 miles, continue onto MS-43N, in 2.0 miles, the property will be on the left.

Address: 2210 Highway 43, Silver Creek, MS, 39663



call me today!

TRINITYWEBB, REALTOR®

Trinity@TomSmithHomes.com

601.990.5070 office | 769.218.7860 cell



TomSmithLandandHomes.com

Information is believed to be accurate but not guaranteed.



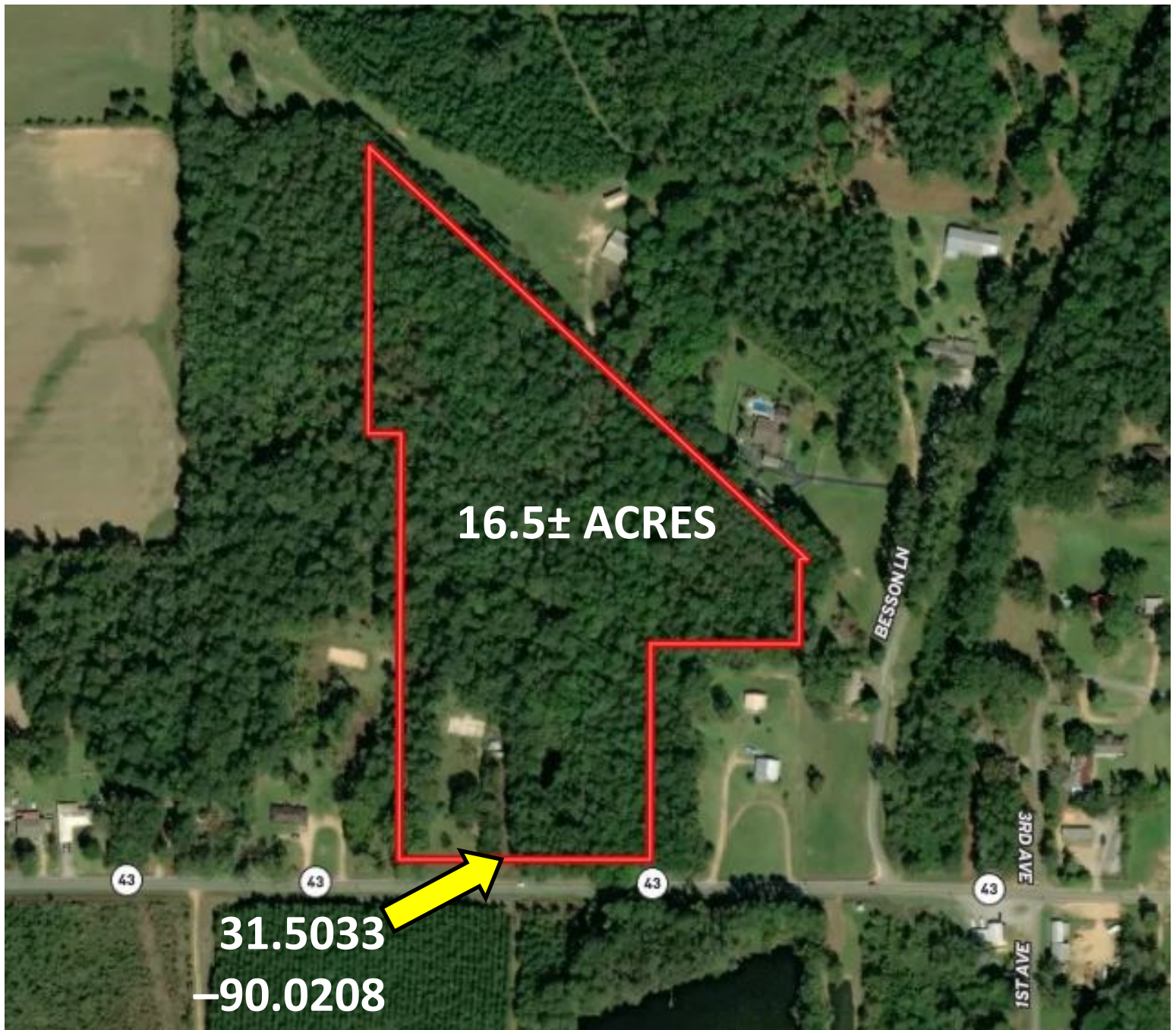
TRINITYWEBB, REALTOR®
Trinity@TomSmithHomes.com
601.990.5070 office | 769.218.7860 cell



TomSmithLandandHomes.com

Information is believed to be accurate but not guaranteed.

AERIAL MAP



INTERACTIVE MAP



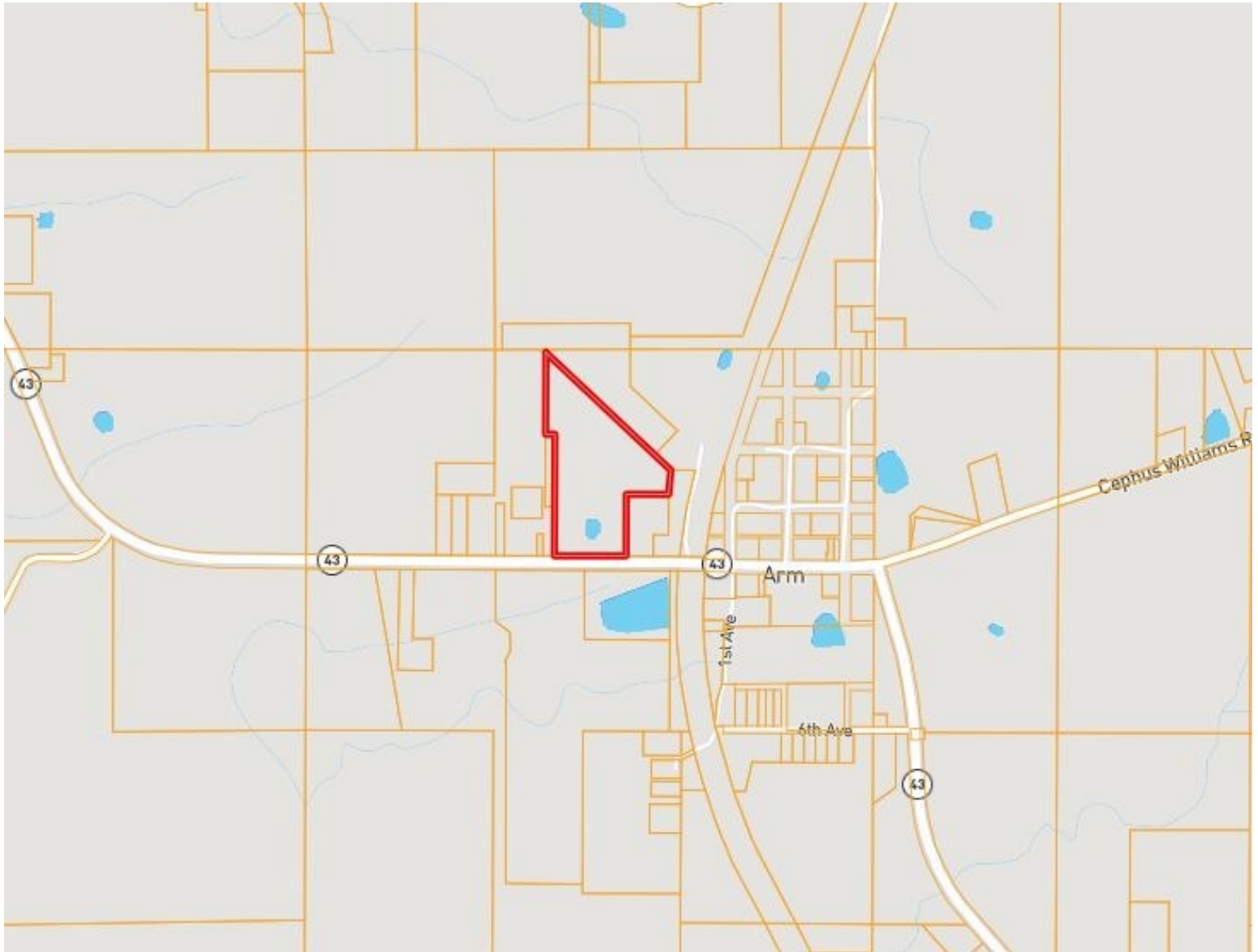
TRINITY WEBB, REALTOR®
Trinity@TomSmithHomes.com
601.990.5070 office | 769.218.7860 cell



TomSmithLandandHomes.com

Information is believed to be accurate but not guaranteed.

OWNERSHIP MAP



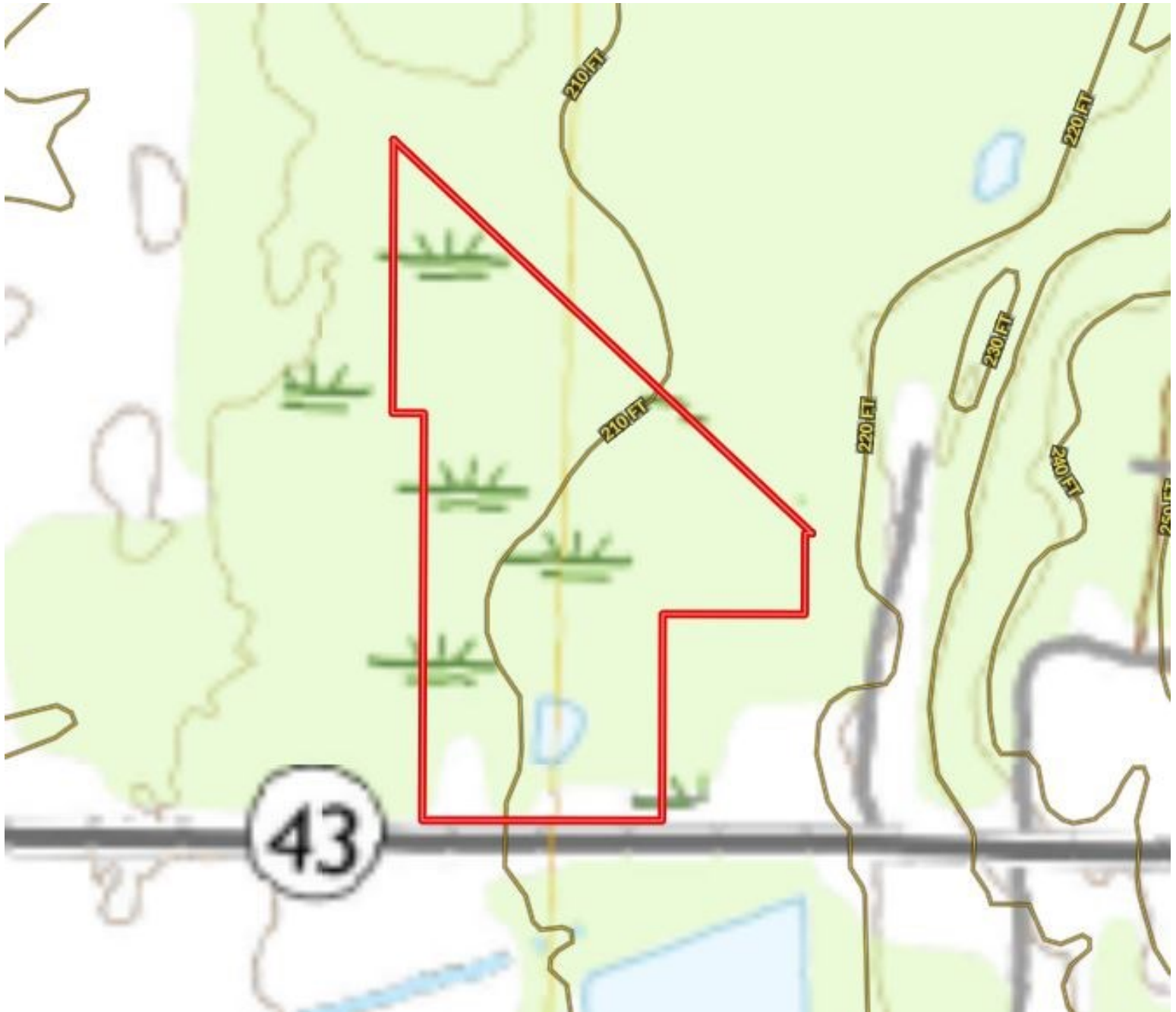
TRINITY WEBB, REALTOR®
Trinity@TomSmithHomes.com
601.990.5070 office | 769.218.7860 cell



TomSmithLandandHomes.com

Information is believed to be accurate but not guaranteed.

TOPO MAP



TRINITY WEBB, REALTOR®
Trinity@TomSmithHomes.com
601.990.5070 office | 769.218.7860 cell



TomSmithLandandHomes.com

Information is believed to be accurate but not guaranteed.

FLOOD MAP



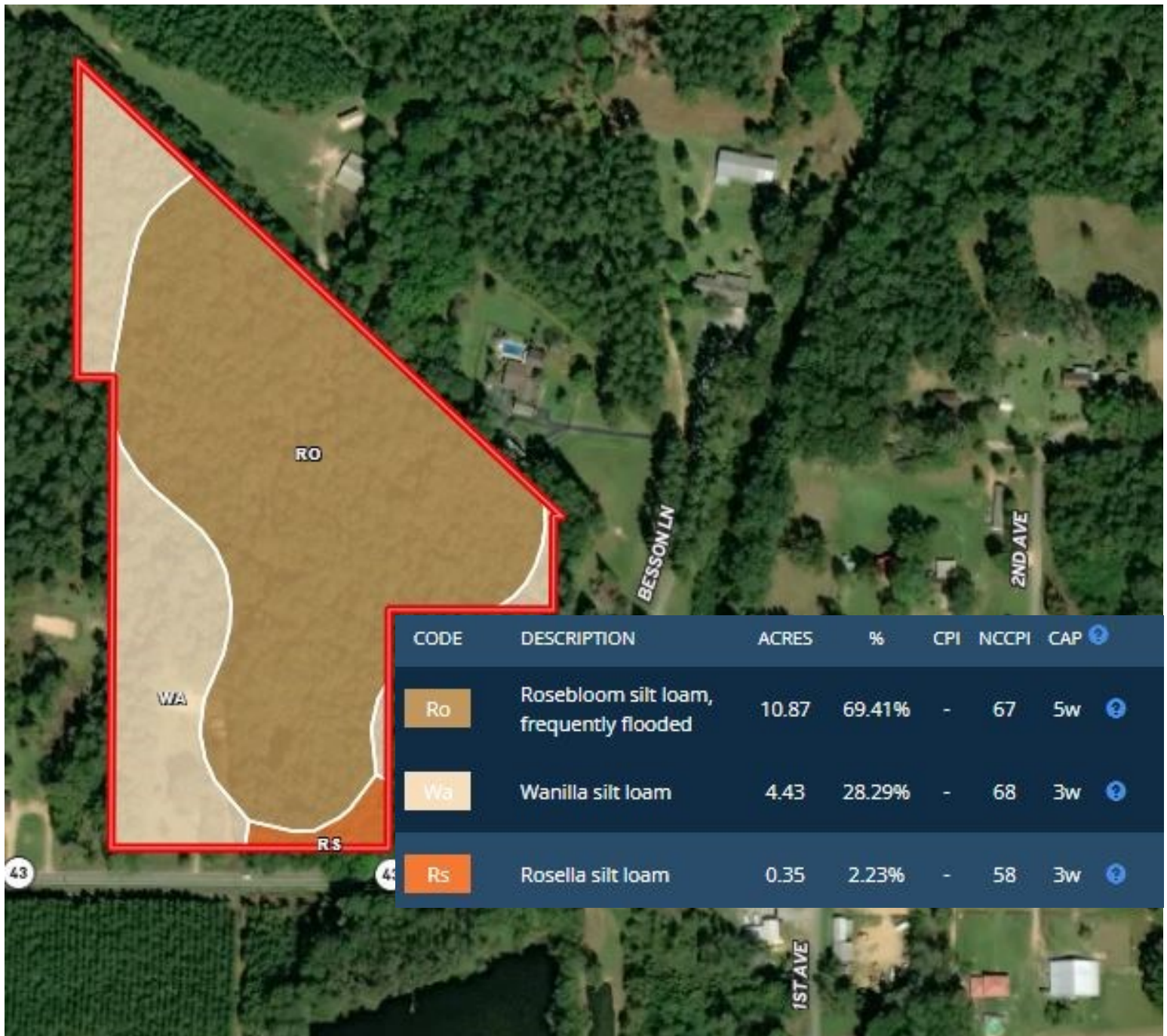
TRINITY WEBB, REALTOR®
Trinity@TomSmithHomes.com
601.990.5070 office | 769.218.7860 cell



TomSmithLandandHomes.com

Information is believed to be accurate but not guaranteed.

SOIL MAP



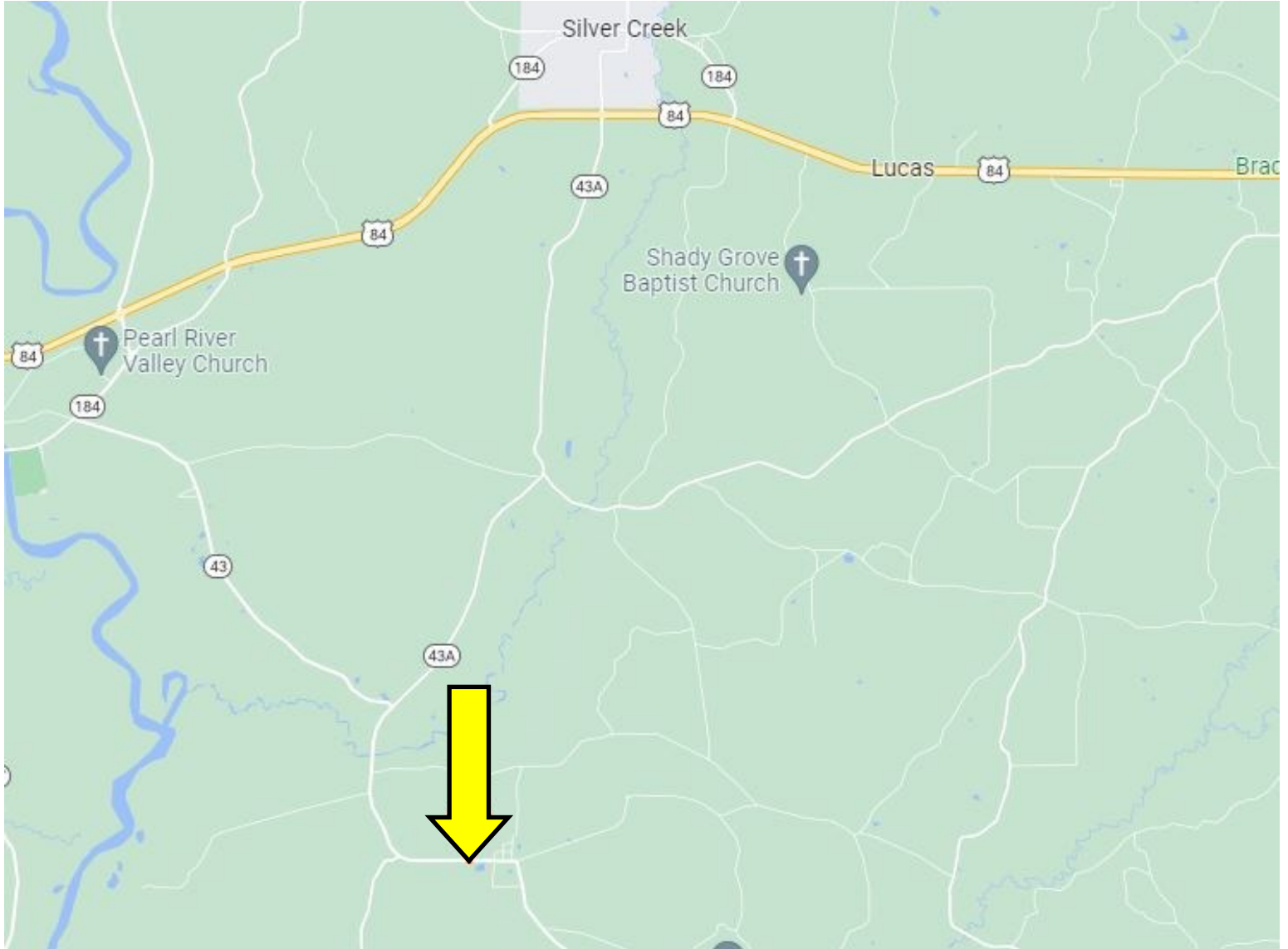
TRINITY WEBB, REALTOR®
Trinity@TomSmithHomes.com
601.990.5070 office | 769.218.7860 cell



TomSmithLandandHomes.com

Information is believed to be accurate but not guaranteed.

DIRECTIONAL MAP



Directions from the intersection of US-84 and MS-43A in Silver Creek, MS: Travel south on MS-43A, in 5.6 miles, continue onto MS-43N, in 2.0 miles, the property will be on the left.

Address: 2210 Highway 43, Silver Creek, MS, 39663



TRINITY WEBB, REALTOR®
Trinity@TomSmithHomes.com
601.990.5070 office | 769.218.7860 cell



TomSmithLandandHomes.com

Information is believed to be accurate but not guaranteed.