

# 16.5± WOODED ACRE HOMESITE IN LAWRENCE COUNTY, MS



**\$72,000**

This 16.5± acre property in Lawrence County, MS, has everything you need! This property has a concrete foundation in place (from an old homesite), driveway, culverts, mailbox, electricity pole, and community water! There is also a pond that you can stick a fishing pole in during the summer months to catch a bite! The concrete foundation housed an approximately 1,700 sqft house previously, so you can use it to pull a mobile home onto or use it for a new foundation! Close proximity to Highway 84 for easy commutes to nearby towns/cities. The property has a great, flat yard that can be restored to a beautiful lawn with mature trees with a little work. Lots of potential here!

Directions from the intersection of US-84 and MS-43A in Silver Creek, MS: Travel south on MS-43A, in 5.6 miles, continue onto MS-43N, in 2.0 miles, the property will be on the left.

Address: 2210 Highway 43, Silver Creek, MS, 39663



*call me today!*

**TRINITYWEBB**, REALTOR®

Trinity@TomSmithHomes.com

601.990.5070 office | 769.218.7860 cell



Expect More. Get More.

**TomSmithLandandHomes.com**

Information is believed to be accurate but not guaranteed.





**TRINITYWEBB**, REALTOR®  
Trinity@TomSmithHomes.com  
601.990.5070 office | 769.218.7860 cell

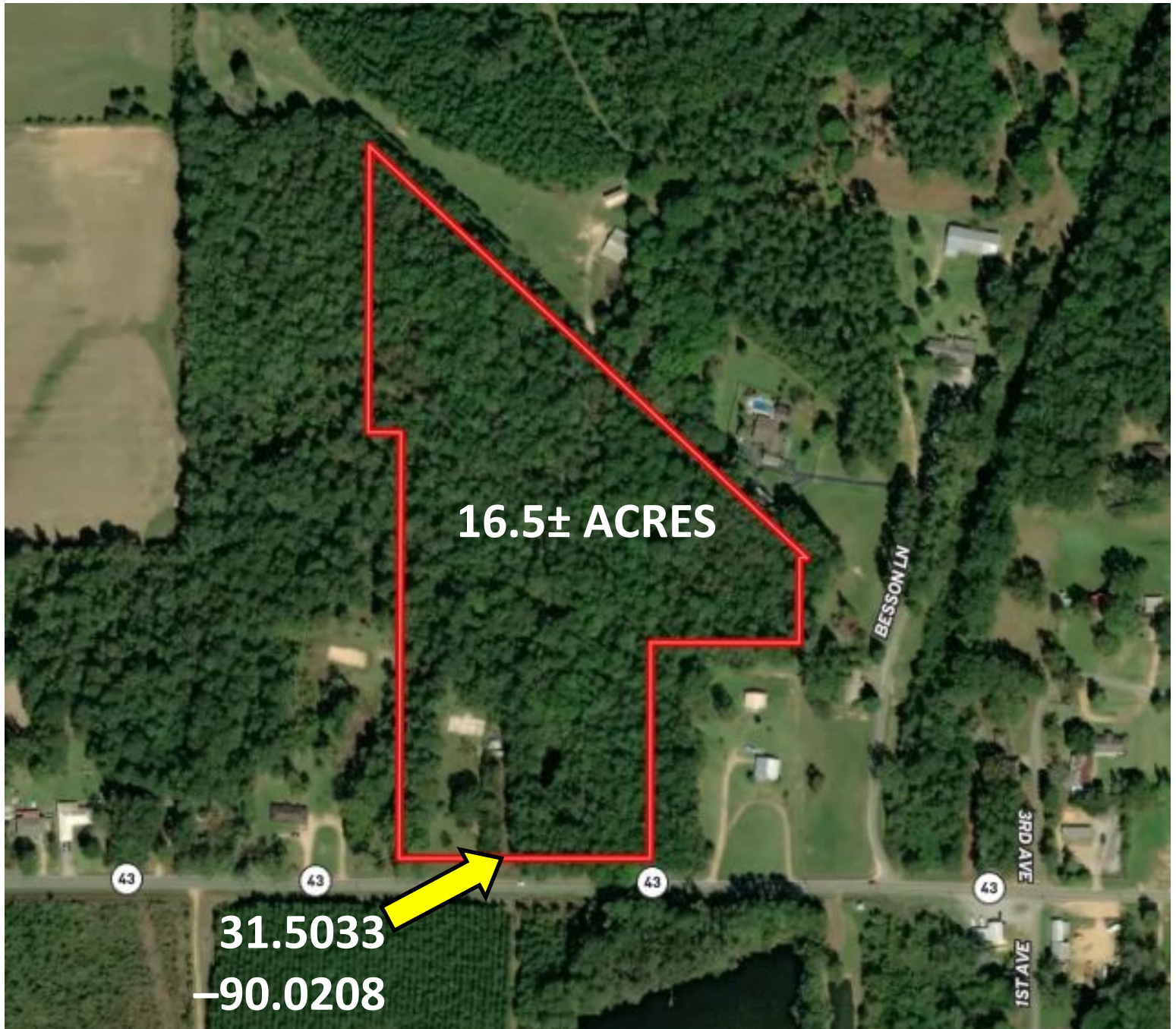


**TomSmithLandandHomes.com**

Information is believed to be accurate but not guaranteed.



## AERIAL MAP



## INTERACTIVE MAP



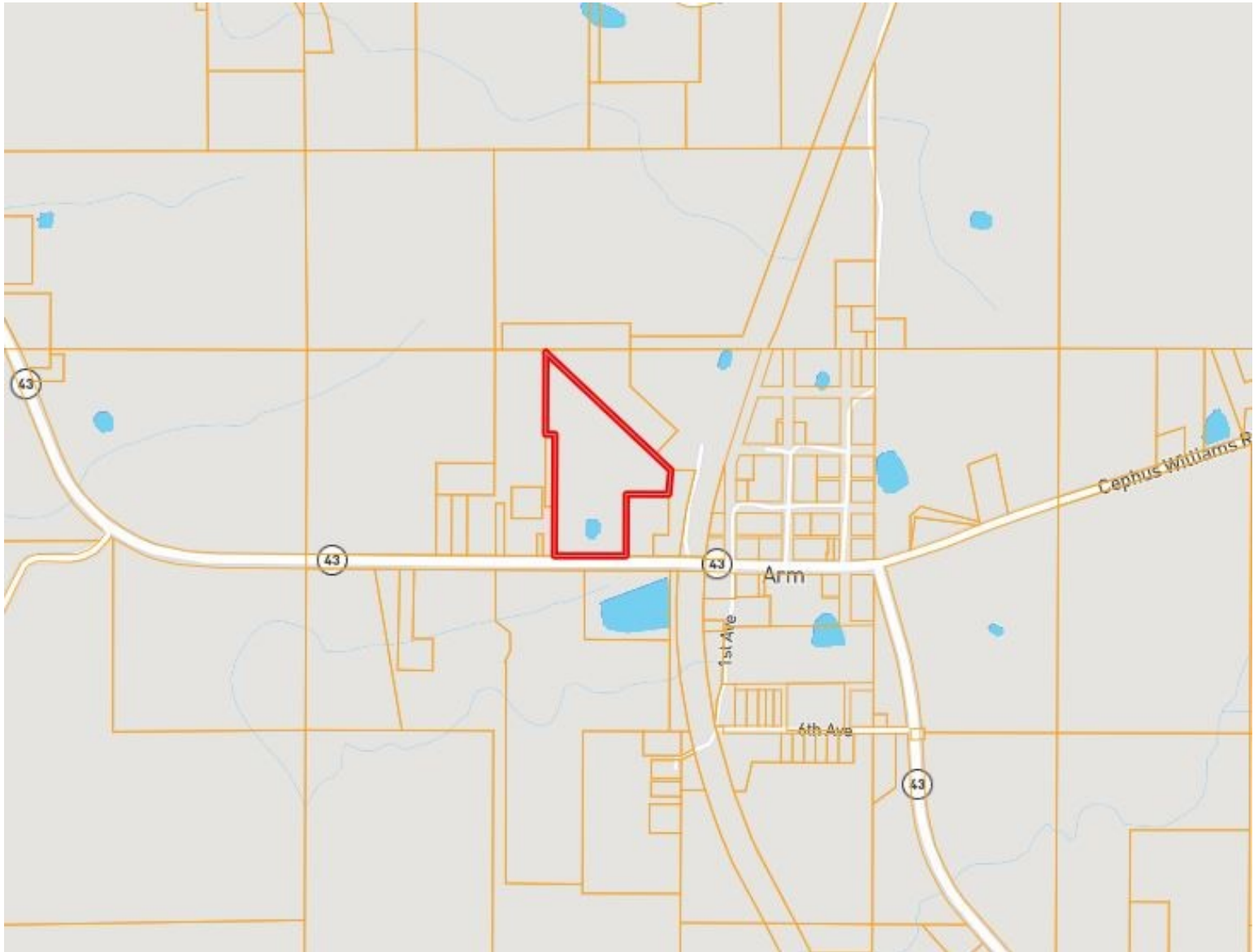
**TRINITY WEBB**, REALTOR®  
Trinity@TomSmithHomes.com  
601.990.5070 office | 769.218.7860 cell



**TomSmithLandandHomes.com**

Information is believed to be accurate but not guaranteed.

# OWNERSHIP MAP



**TRINITY WEBB**, REALTOR®  
Trinity@TomSmithHomes.com  
601.990.5070 office | 769.218.7860 cell

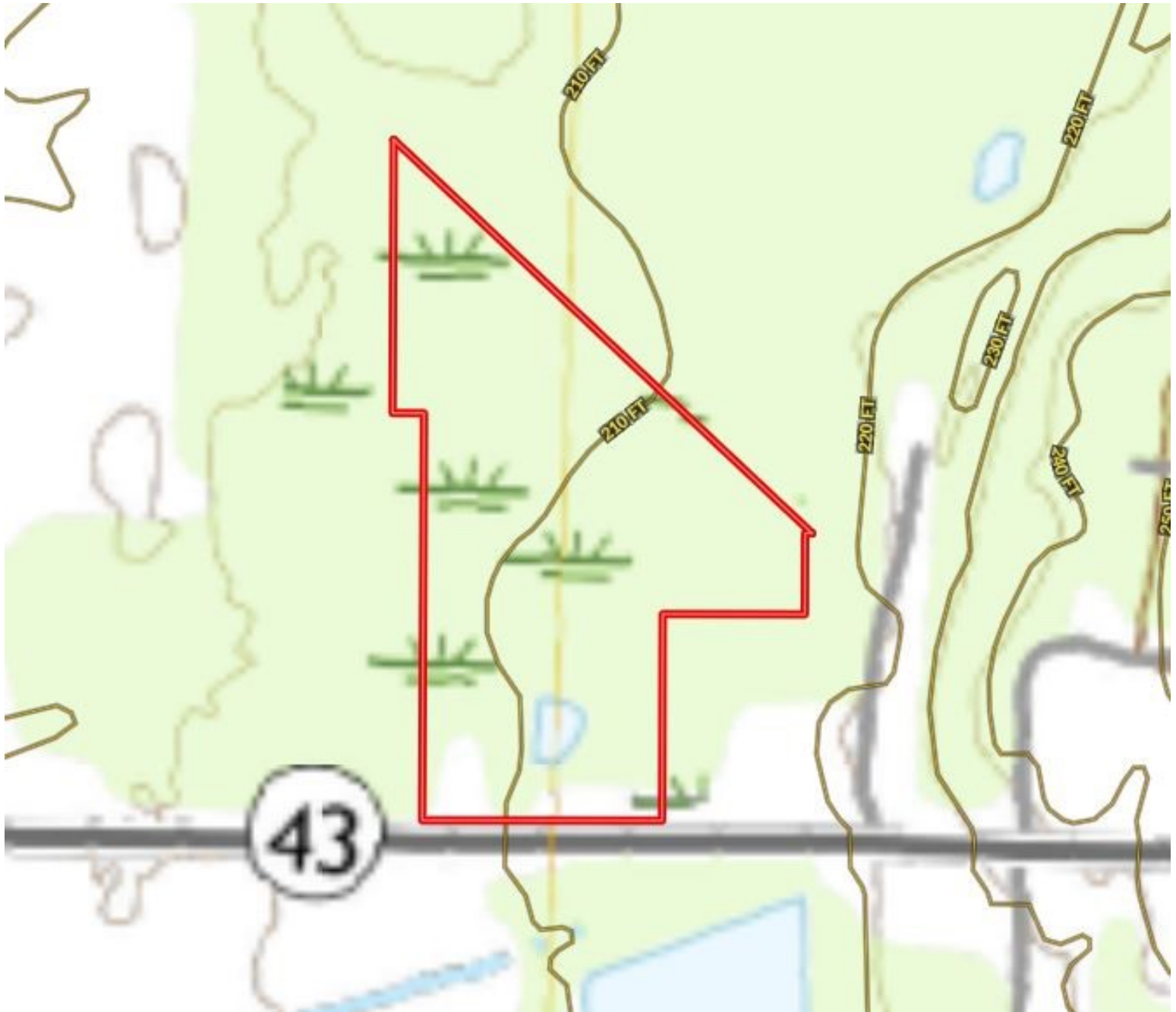


**TomSmithLandandHomes.com**

Information is believed to be accurate but not guaranteed.



# TOPO MAP



**TRINITY WEBB**, REALTOR®  
Trinity@TomSmithHomes.com  
601.990.5070 office | 769.218.7860 cell



**TomSmithLandandHomes.com**

Information is believed to be accurate but not guaranteed.

# FLOOD MAP



**TRINITY WEBB**, REALTOR®  
Trinity@TomSmithHomes.com  
601.990.5070 office | 769.218.7860 cell

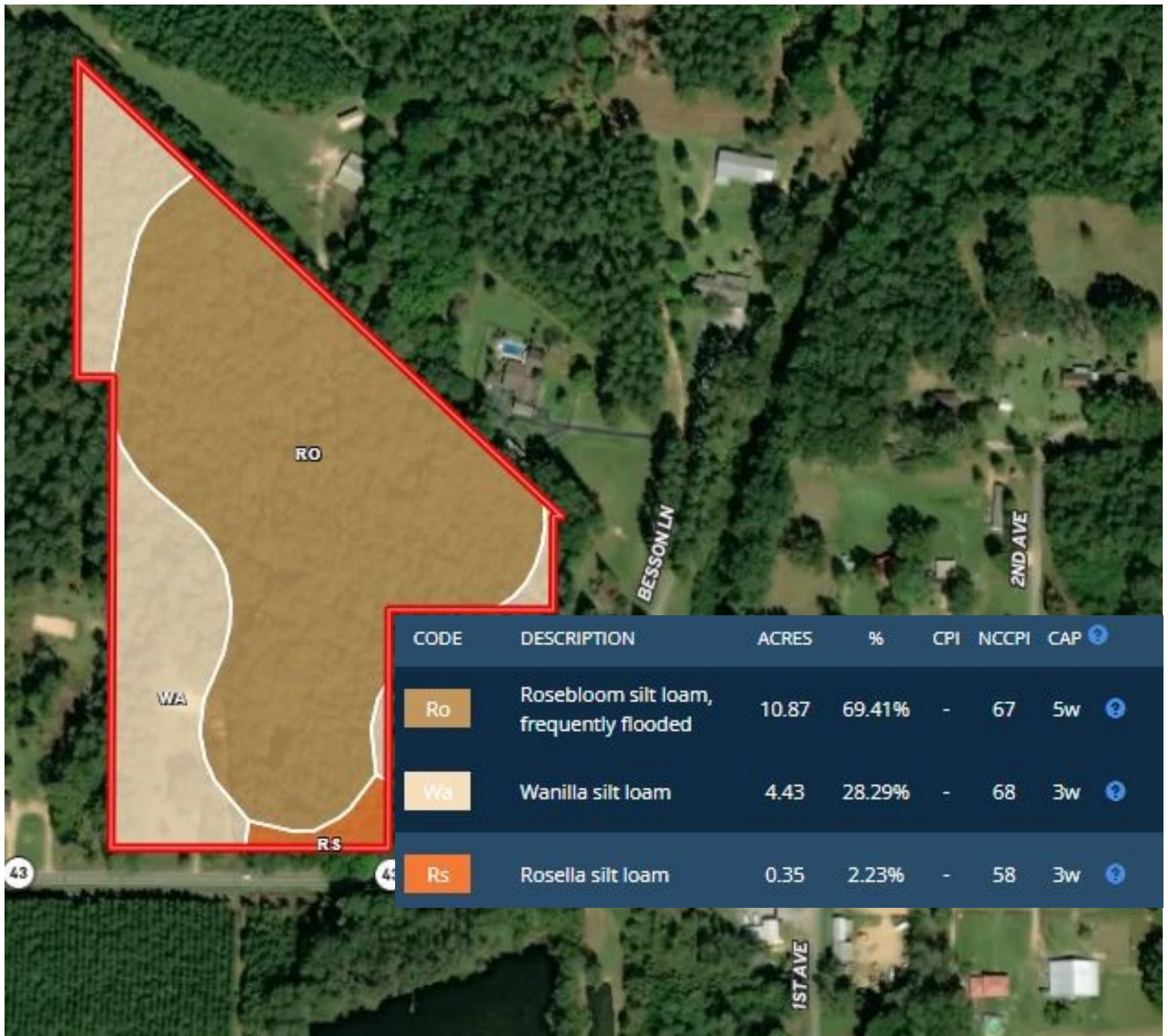


**TomSmithLandandHomes.com**

Information is believed to be accurate but not guaranteed.



# SOIL MAP



**TRINITY WEBB**, REALTOR®  
Trinity@TomSmithHomes.com  
601.990.5070 office | 769.218.7860 cell



**TomSmithLandandHomes.com**

Information is believed to be accurate but not guaranteed.

# DIRECTIONAL MAP



Directions from the intersection of US-84 and MS-43A in Silver Creek, MS: Travel south on MS-43A, in 5.6 miles, continue onto MS-43N, in 2.0 miles, the property will be on the left.

Address: 2210 Highway 43, Silver Creek, MS, 39663



**TRINITY WEBB**, REALTOR®  
Trinity@TomSmithHomes.com  
601.990.5070 office | 769.218.7860 cell



**TomSmithLandandHomes.com**

Information is believed to be accurate but not guaranteed.