

.37± ACRE RESIDENTIAL LOT IN RANKIN COUNTY, MS



\$85,000

Check out this partially fenced .37+/- acre residential lot in Rankin County, MS! Located near the Reservoir and in Brandon, MS, this lot provides an excellent location to build a home with quick access to amenities and entertainment. There is already an established house pad with plenty of large shade trees and a storage shed.

Directions from the intersection of Airport Rd and Lakeland Dr in Flowood, MS: Travel east on Lakeland Dr, in 3.5 miles, turn left onto Manship Rd, in 1.7 miles, turn left onto Grants Ferry Rd, in .6 miles, turn left onto Spillway Rd, in .2 miles turn right onto Holly Trail, the property will be on the left in .2 miles.

Address: 111 Holly Trail, Brandon, MS, 39047



call me today!

PRESTON SMITH, MANAGING BROKER
Preston@TomSmithLand.com
601.990.5070 office | 601.209.7150 cell



TomSmithLandandHomes.com

Information is believed to be accurate but not guaranteed.



PRESTON SMITH, MANAGING BROKER
Preston@TomSmithLand.com
601.990.5070 office | 601.209.7150 cell



TomSmithLandandHomes.com

Information is believed to be accurate but not guaranteed.

Aerial Map



INTERACTIVE MAP



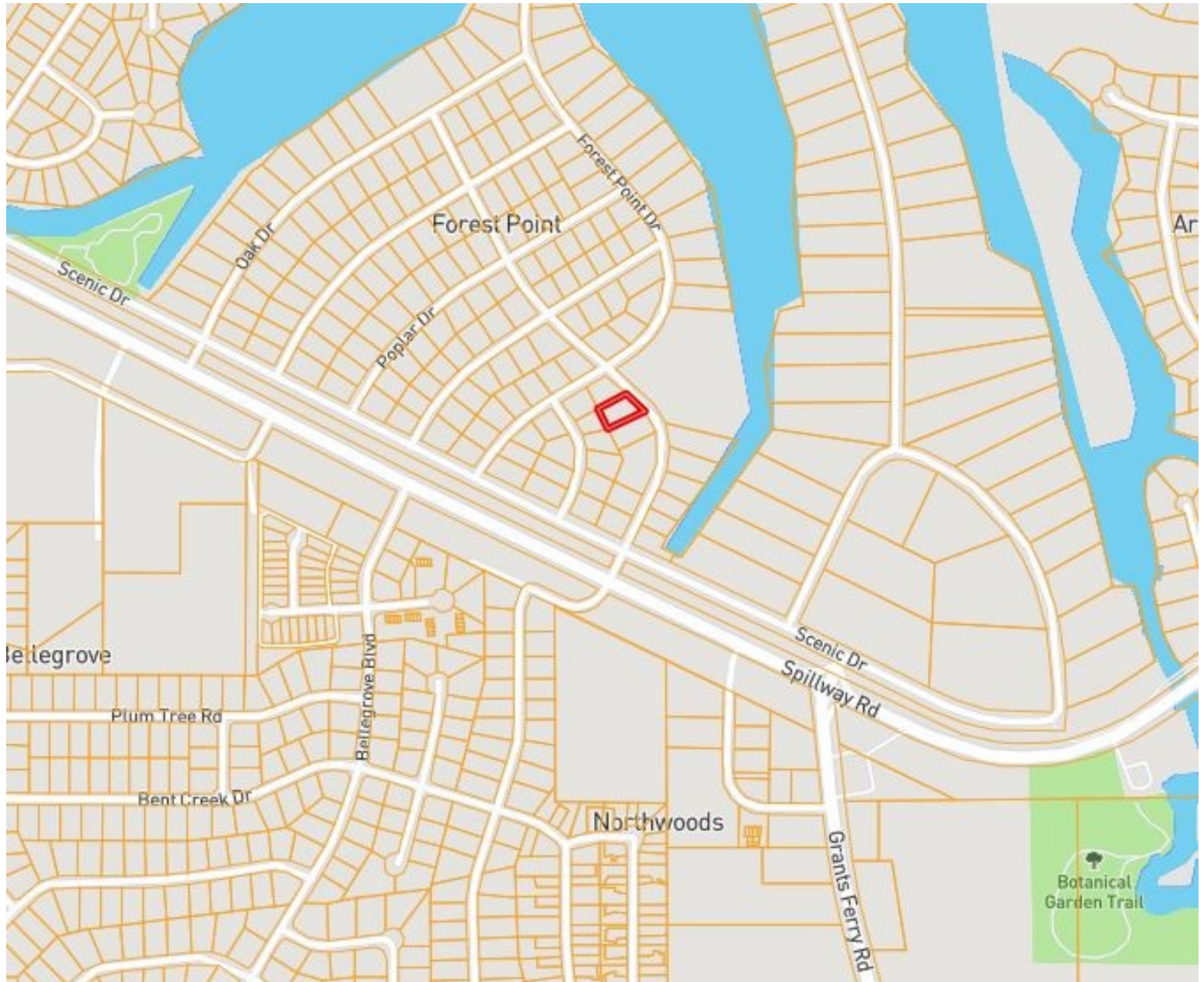
PRESTON SMITH, MANAGING BROKER
Preston@TomSmithLand.com
601.990.5070 office | 601.209.7150 cell



TomSmithLandandHomes.com

Information is believed to be accurate but not guaranteed.

Ownership Map



PRESTON SMITH, MANAGING BROKER
Preston@TomSmithLand.com
601.990.5070 office | 601.209.7150 cell



TomSmithLandandHomes.com

Information is believed to be accurate but not guaranteed.

Flood Map



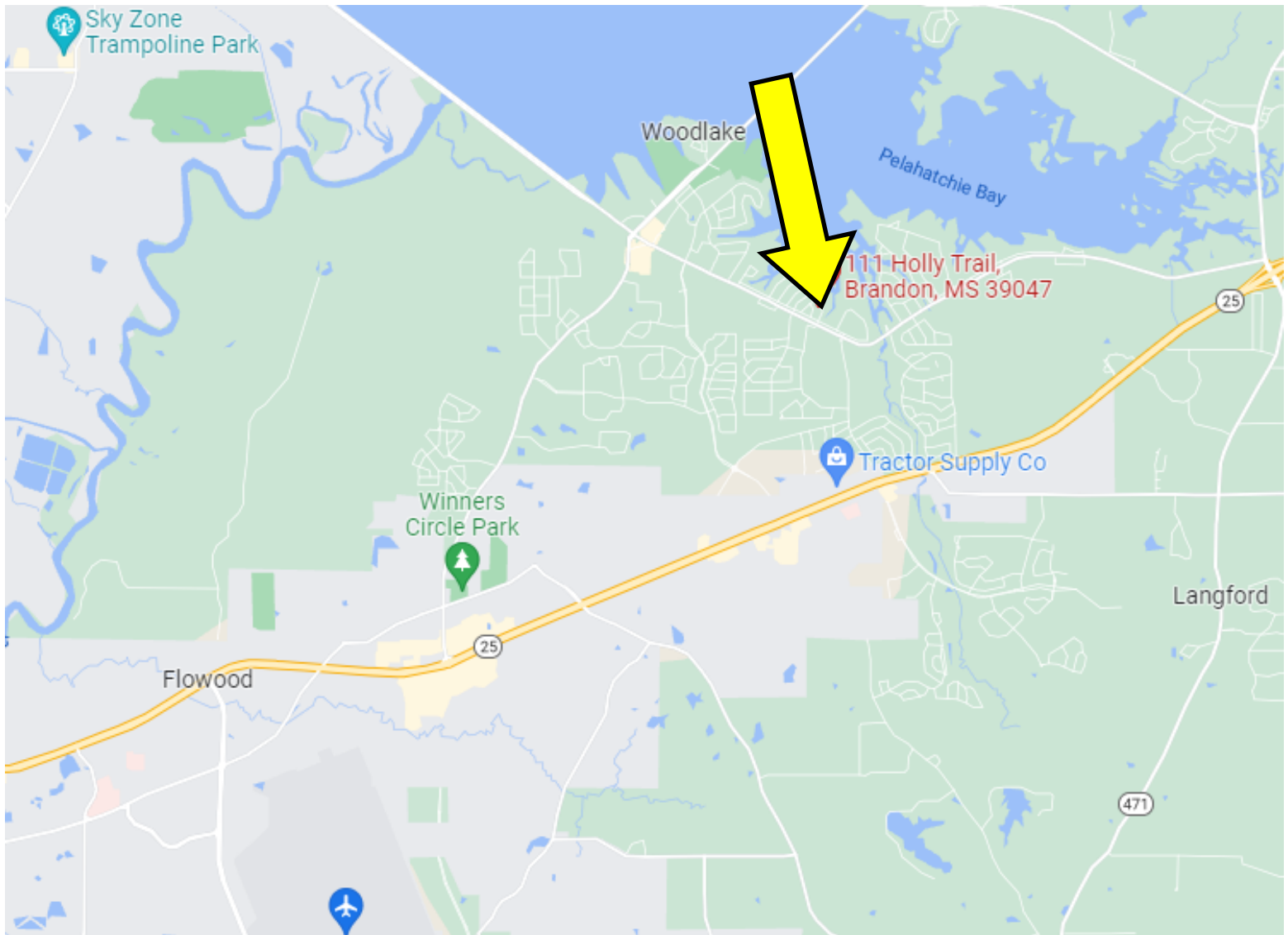
PRESTON SMITH, MANAGING BROKER
Preston@TomSmithLand.com
601.990.5070 office | 601.209.7150 cell



TomSmithLandandHomes.com

Information is believed to be accurate but not guaranteed.

Directional Map



Directions from the intersection of Airport Rd and Lakeland Dr in Flowood, MS: Travel east on Lakeland Dr, in 3.5 miles, turn left onto Manship Rd, in 1.7 miles, turn left onto Grants Ferry Rd, in .6 miles, turn left onto Spillway Rd, in .2 miles turn right onto Holly Trail, the property will be on the left in .2 miles.

Address: 111 Holly Trail, Brandon, MS, 39047



PRESTON SMITH, MANAGING BROKER
Preston@TomSmithLand.com
601.990.5070 office | 601.209.7150 cell



TomSmithLandandHomes.com

Information is believed to be accurate but not guaranteed.