

# 4 BED/2 BATH HOME ON 11± ACRES IN ST. TAMMANY PARISH, LOUISIANA



**83321 HOUSE CREEK RD, BUSH, LA**

**\$389,000**

Check out this excellent four bed, two bath home in Bush, LA, in St. Tammany Parish on 11± acres! The home features a large open floor plan downstairs and has a wood burning brick-fireplace. This great home has even greater views from the front porch, looking over a mix of pasture, planted pines and scattered live oaks, and a long private driveway! The property also features not one, but two .5± acre ponds for fishing, a 40x40 barn and a 25x49 tractor shed/workshop with fenced pens off the back. In addition the property is located in close proximity to New Orleans, LA and all of the Mississippi Gulf Coast, putting you close to plenty of entertainment and amenities.

*Directions from the intersection of US Highway 190 and LA-21 in Covington, LA: Travel east on LA-21N/US-190 BUS E toward Tammany Trace Bike Trail/Tammany Trace for .2 miles, keep left to stay on LA-21N, in 3.9 miles, turn left onto LA-1082N, in 8.3 miles, turn left onto LA-40W, in 1.4 miles, turn right onto House Creek Rd, in .6 miles, the driveway will be on the left.*

Address: 83321 House Creek Road, Bush, LA 70431



*Call me today!*

**PRESTON SMITH**, MANAGING BROKER  
Preston@TomSmithLand.com  
601.990.5070 **office** | 601.209.7150 **cell**



**TomSmithLandandHomes.com**

Information is believed to be accurate but not guaranteed.



*Call me today!*

**PRESTON SMITH**, MANAGING BROKER  
Preston@TomSmithLand.com  
601.990.5070 office | 601.209.7150 cell



**TomSmithLandandHomes.com**

Information is believed to be accurate but not guaranteed.



*Call me today!*

**PRESTON SMITH**, MANAGING BROKER  
Preston@TomSmithLand.com  
601.990.5070 office | 601.209.7150 cell



Expect More. Get More.

**TomSmithLandandHomes.com**

Information is believed to be accurate but not guaranteed.



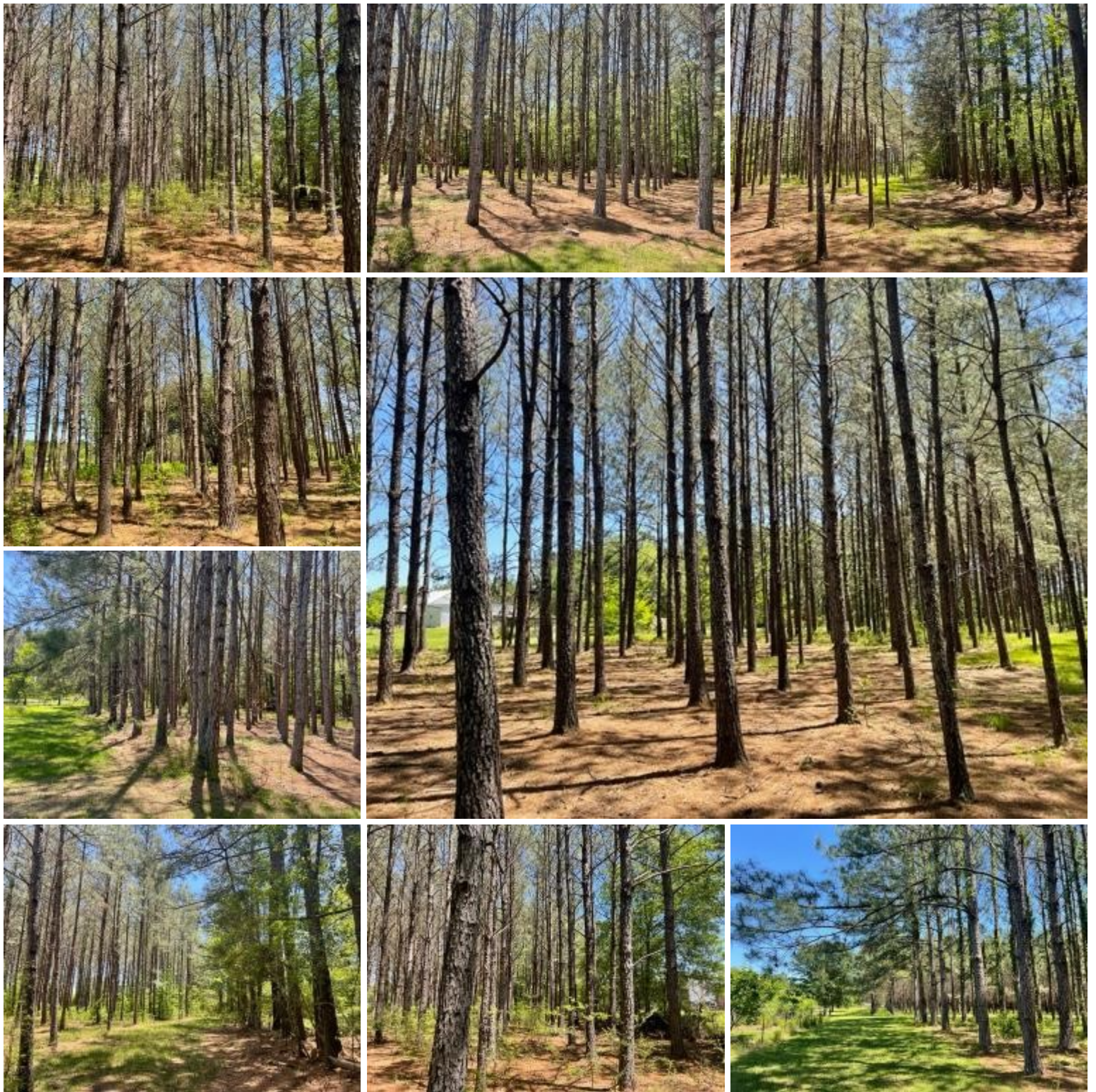
*Call me today!*

**PRESTON SMITH**, MANAGING BROKER  
Preston@TomSmithLand.com  
601.990.5070 office | 601.209.7150 cell



**TomSmithLandandHomes.com**

Information is believed to be accurate but not guaranteed.



*Call me today!*

**PRESTON SMITH**, MANAGING BROKER  
Preston@TomSmithLand.com  
601.990.5070 **office** | 601.209.7150 **cell**



**TomSmithLandandHomes.com**

Information is believed to be accurate but not guaranteed.



*Call me today!*

**PRESTON SMITH**, MANAGING BROKER  
Preston@TomSmithLand.com  
601.990.5070 office | 601.209.7150 cell

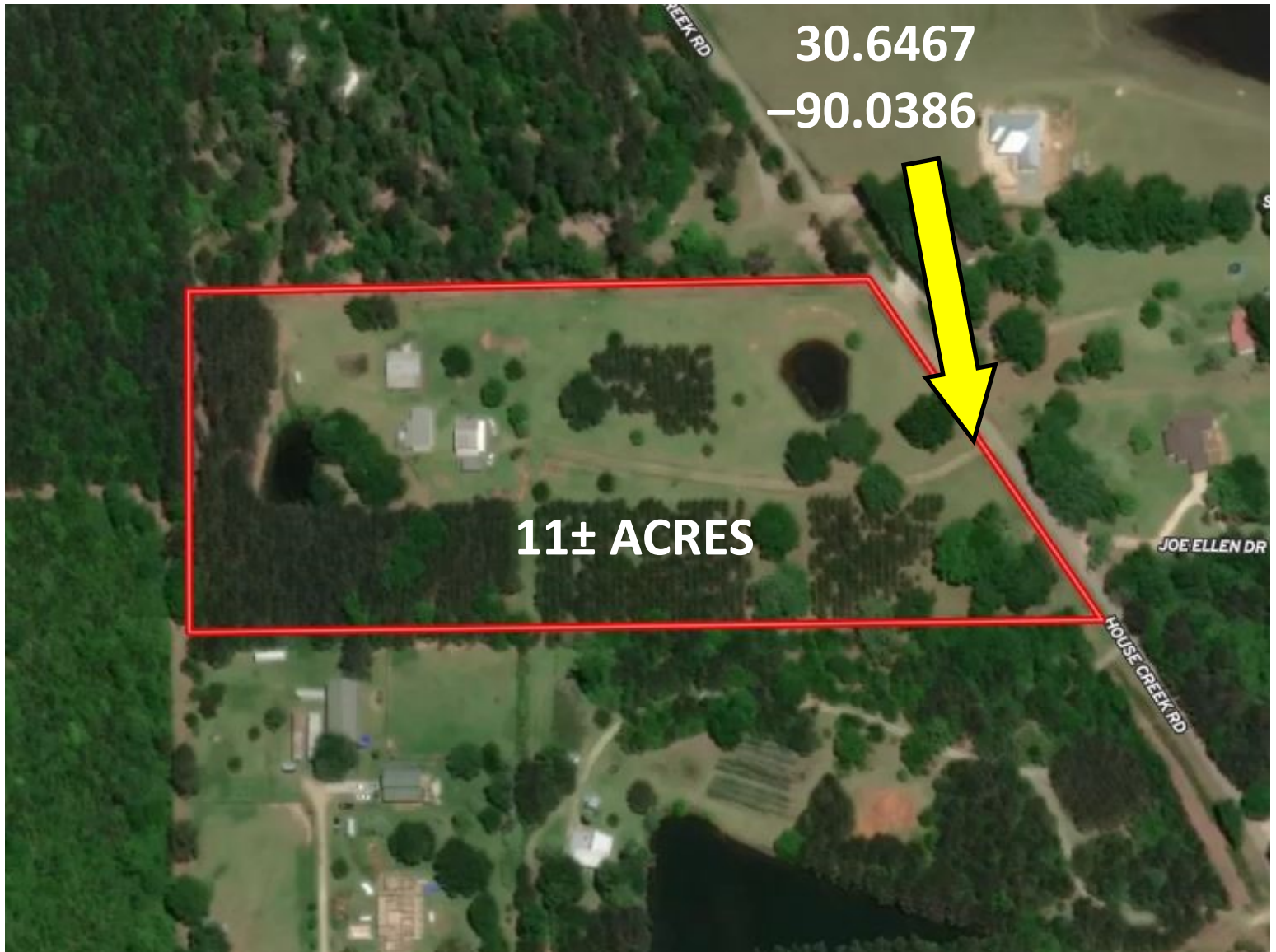


Expect More. Get More.

**TomSmithLandandHomes.com**

Information is believed to be accurate but not guaranteed.

# Aerial Map



## INTERACTIVE MAP

*Call me today!*

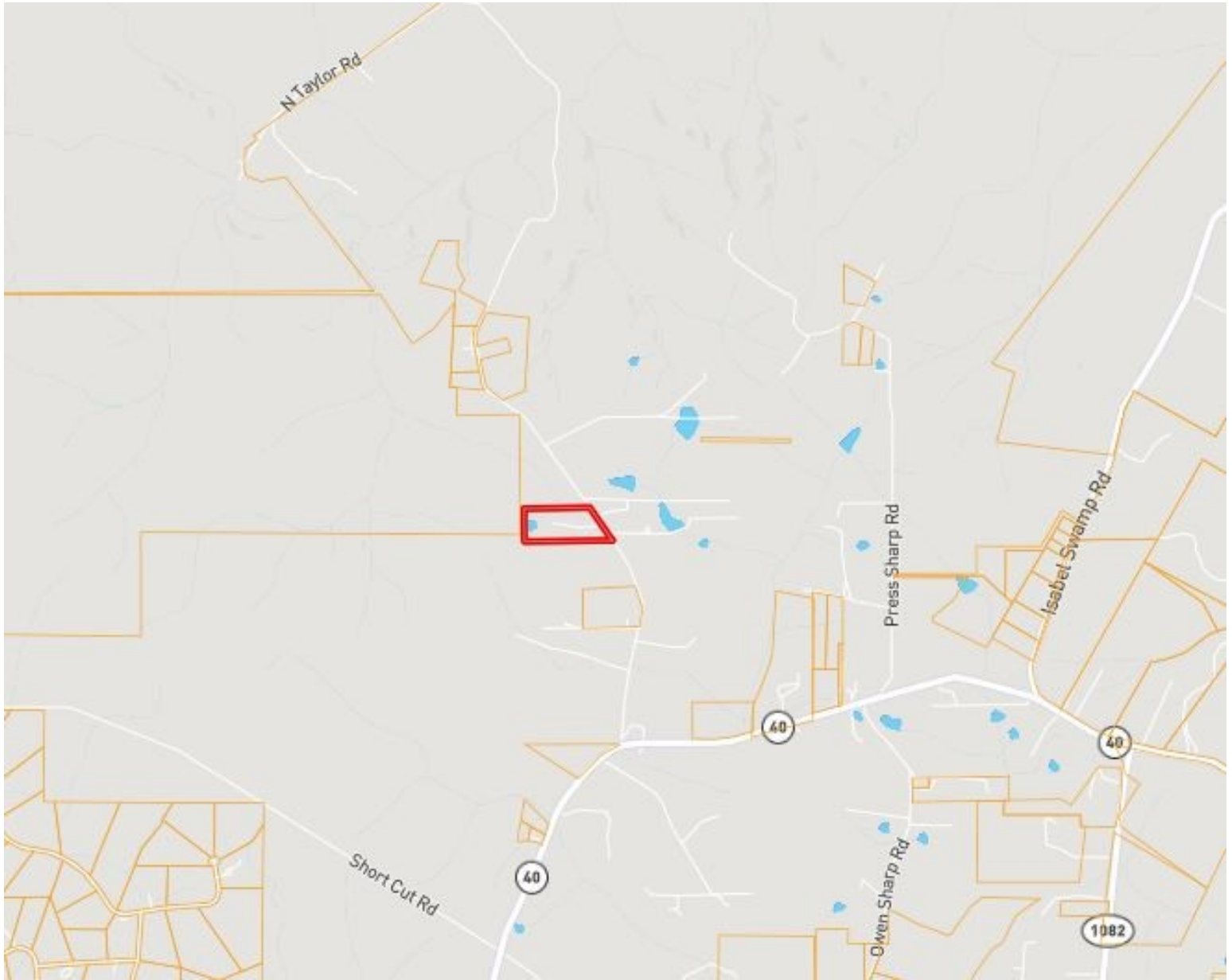
**PRESTON SMITH**, MANAGING BROKER  
Preston@TomSmithLand.com  
601.990.5070 **office** | 601.209.7150 **cell**



**TomSmithLandandHomes.com**

Information is believed to be accurate but not guaranteed.

# Ownership Map



*Call me today!*

**PRESTON SMITH**, MANAGING BROKER  
Preston@TomSmithLand.com  
601.990.5070 **office** | 601.209.7150 **cell**

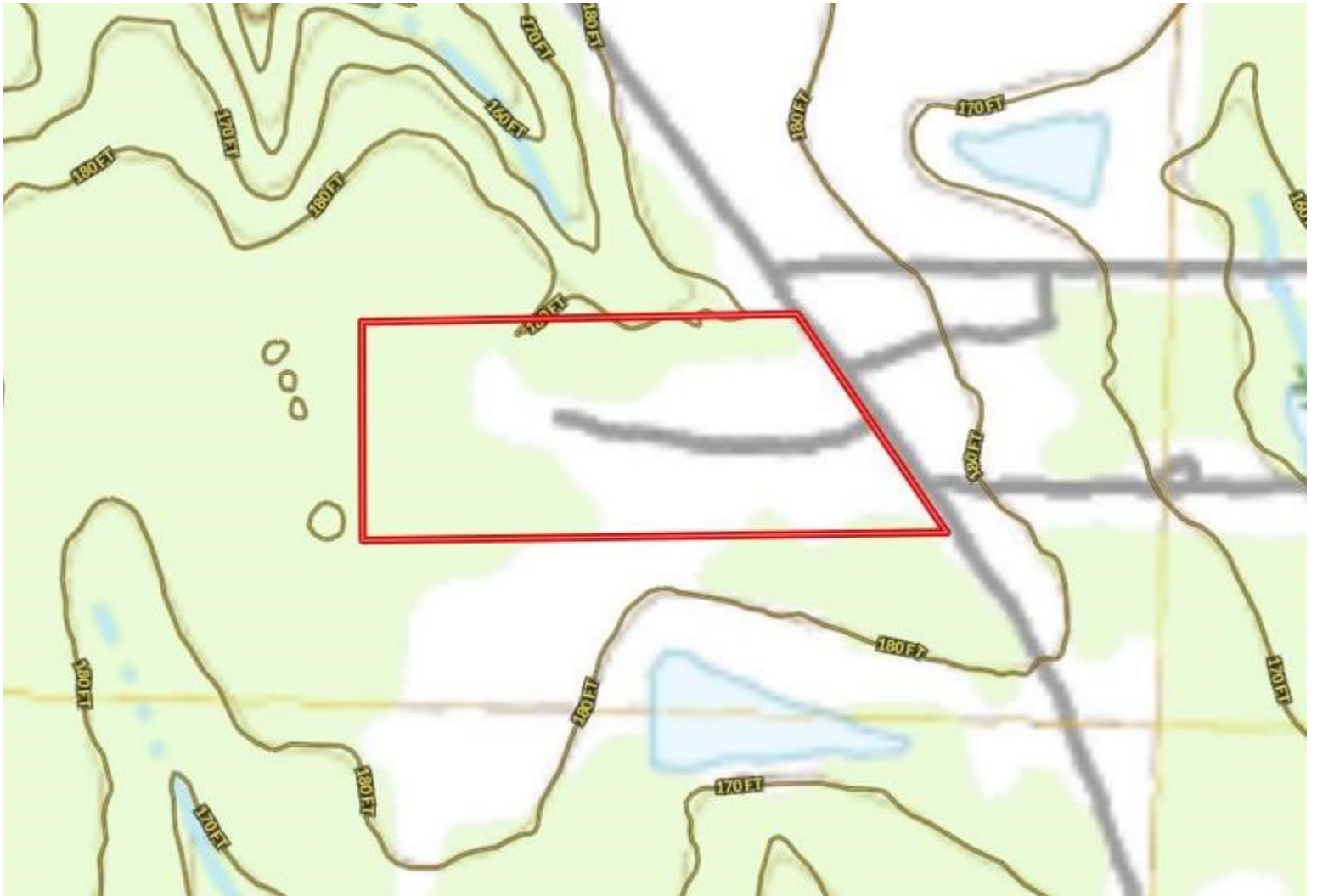


**TomSmithLandandHomes.com**

Information is believed to be accurate but not guaranteed.



# Topography Map



*Call me today!*

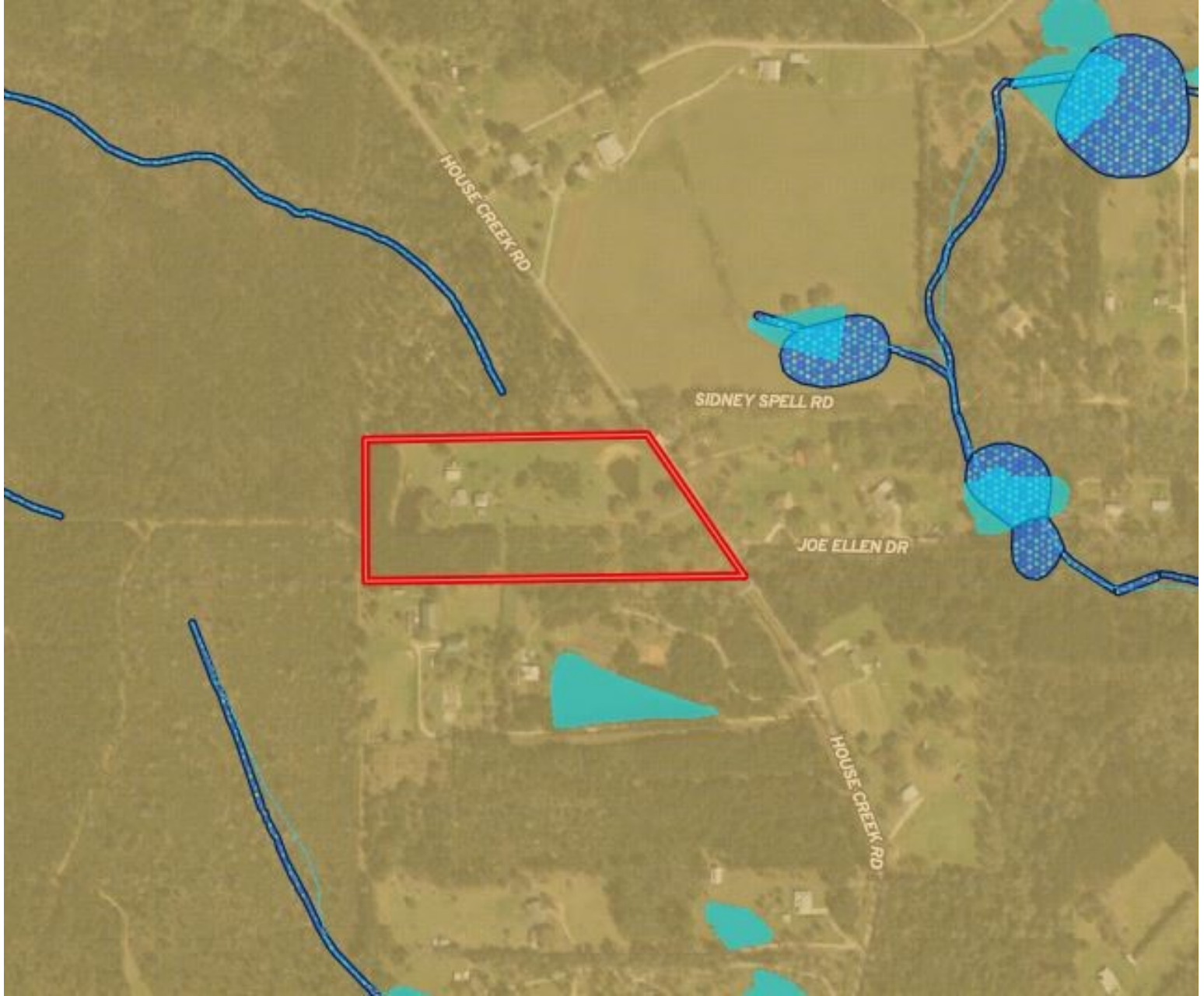
**PRESTON SMITH**, MANAGING BROKER  
Preston@TomSmithLand.com  
601.990.5070 **office** | 601.209.7150 **cell**



**TomSmithLandandHomes.com**

Information is believed to be accurate but not guaranteed.

# Flood Map



*Call me today!*

**PRESTON SMITH**, MANAGING BROKER  
Preston@TomSmithLand.com  
601.990.5070 office | 601.209.7150 cell



**TomSmithLandandHomes.com**

Information is believed to be accurate but not guaranteed.

# Soil Map



CODE	DESCRIPTION	ACRES	%	CPI	NCCPI	CAP
Sa	Savannah fine sandy loam, 1 to 3 percent slopes	11.06	100%	-	34	2e

*Call me today!*

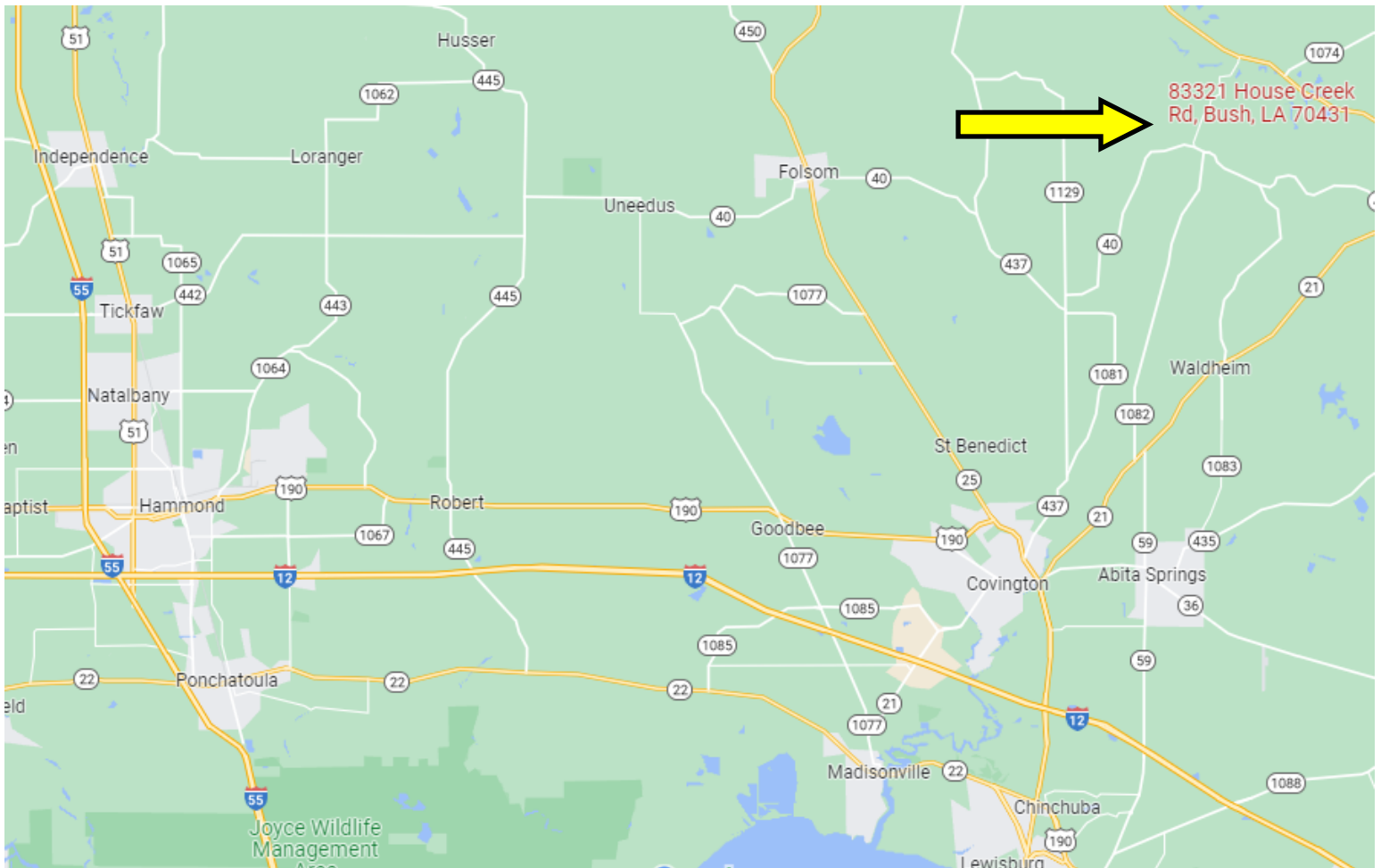
**PRESTON SMITH**, MANAGING BROKER  
 Preston@TomSmithLand.com  
 601.990.5070 office | 601.209.7150 cell



**TomSmithLandandHomes.com**

Information is believed to be accurate but not guaranteed.

# Directional Map



## GOOGLE MAP LINK

*Directions from the intersection of US Highway 190 and LA-21 in Covington, LA: Travel east on LA-21N/US-190 BUS E toward Tammany Trace Bike Trail/Tammany Trace for .2 miles, keep left to stay on LA-21N, in 3.9 miles, turn left onto LA-1082N, in 8.3 miles, turn left onto LA-40W, in 1.4 miles, turn right onto House Creek Rd, in .6 miles, the driveway will be on the left.*

Address: 83321 House Creek Road, Bush, LA 70431

*Call me today!*

**PRESTON SMITH**, MANAGING BROKER  
Preston@TomSmithLand.com  
601.990.5070 office | 601.209.7150 cell



**TomSmithLandandHomes.com**

Information is believed to be accurate but not guaranteed.