

# 3 BEDROOM 2 BATH HOME IN PEARL RIVER COUNTY, MS



110 Elmer Smith Rd, Lumberton, MS

\$229,990

Check out this 2-story, 2800± sqft, 4 bed/2 bath plus 2 half bath home on 10± acres in Pearl River County. The mostly wooded property sits on 10± acres and features a creek on the east side, just behind the house. Located approximately 15 minutes from both Lumberton and Poplaville, MS, this property offers the seclusion of country living while also providing quick access to amenities needed. This property is also located approximately an hour and fifteen minutes from New Orleans, LA, and less than an hour from Biloxi and Gulfport. This property has a ton of potential, come take a look at a hidden Pearl River County pearl today!

*Directions from Lumberton, MS: Travel South on Gum Pond Rd, in 7.0 miles turn left onto Tee Rd, in 1.0 mile turn left onto Elmer Smith Rd, in .6 miles the property will be on your right. 110 Elmer Smith Rd, Lumberton, MS 39455*



*Call me today!*

**ROBERT SMITH**, REALTOR®  
Robert@TomSmithLand.com  
601.990.5070 office | 769.257.8139 cell



**TomSmithLandandHomes.com**

Information is believed to be accurate but not guaranteed.



*Call me today!*

**ROBERT SMITH, REALTOR®**  
Robert@TomSmithLand.com  
601.990.5070 office | 769.257.8139 cell



Expect More. Get More.

**TomSmithLandandHomes.com**

Information is believed to be accurate but not guaranteed.



*Call me today!*

**ROBERT SMITH, REALTOR®**  
Robert@TomSmithLand.com  
601.990.5070 office | 769.257.8139 cell



**TomSmithLandandHomes.com**

Information is believed to be accurate but not guaranteed.



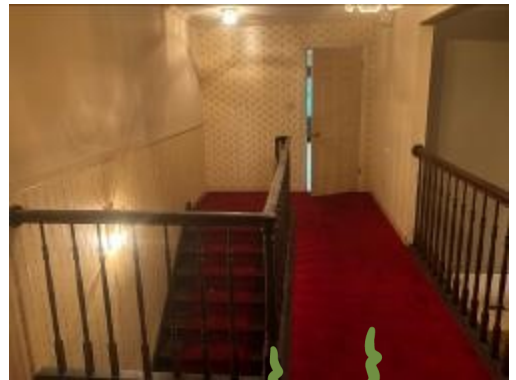
*Call me today!*

**ROBERT SMITH, REALTOR®**  
Robert@TomSmithLand.com  
601.990.5070 office | 769.257.8139 cell



**TomSmithLandandHomes.com**

Information is believed to be accurate but not guaranteed.



*Call me today!*

**ROBERT SMITH, REALTOR®**  
Robert@TomSmithLand.com  
601.990.5070 office | 769.257.8139 cell



**TomSmithLandandHomes.com**

Information is believed to be accurate but not guaranteed.



*Call me today!*

**ROBERT SMITH, REALTOR®**  
Robert@TomSmithLand.com  
601.990.5070 office | 769.257.8139 cell



Expect More. Get More.

**TomSmithLandandHomes.com**

Information is believed to be accurate but not guaranteed.



*Call me today!*

**ROBERT SMITH, REALTOR®**  
Robert@TomSmithLand.com  
601.990.5070 office | 769.257.8139 cell



Expect More. Get More.

**TomSmithLandandHomes.com**

Information is believed to be accurate but not guaranteed.



*Call me today!*

**ROBERT SMITH, REALTOR®**  
Robert@TomSmithLand.com  
601.990.5070 office | 769.257.8139 cell



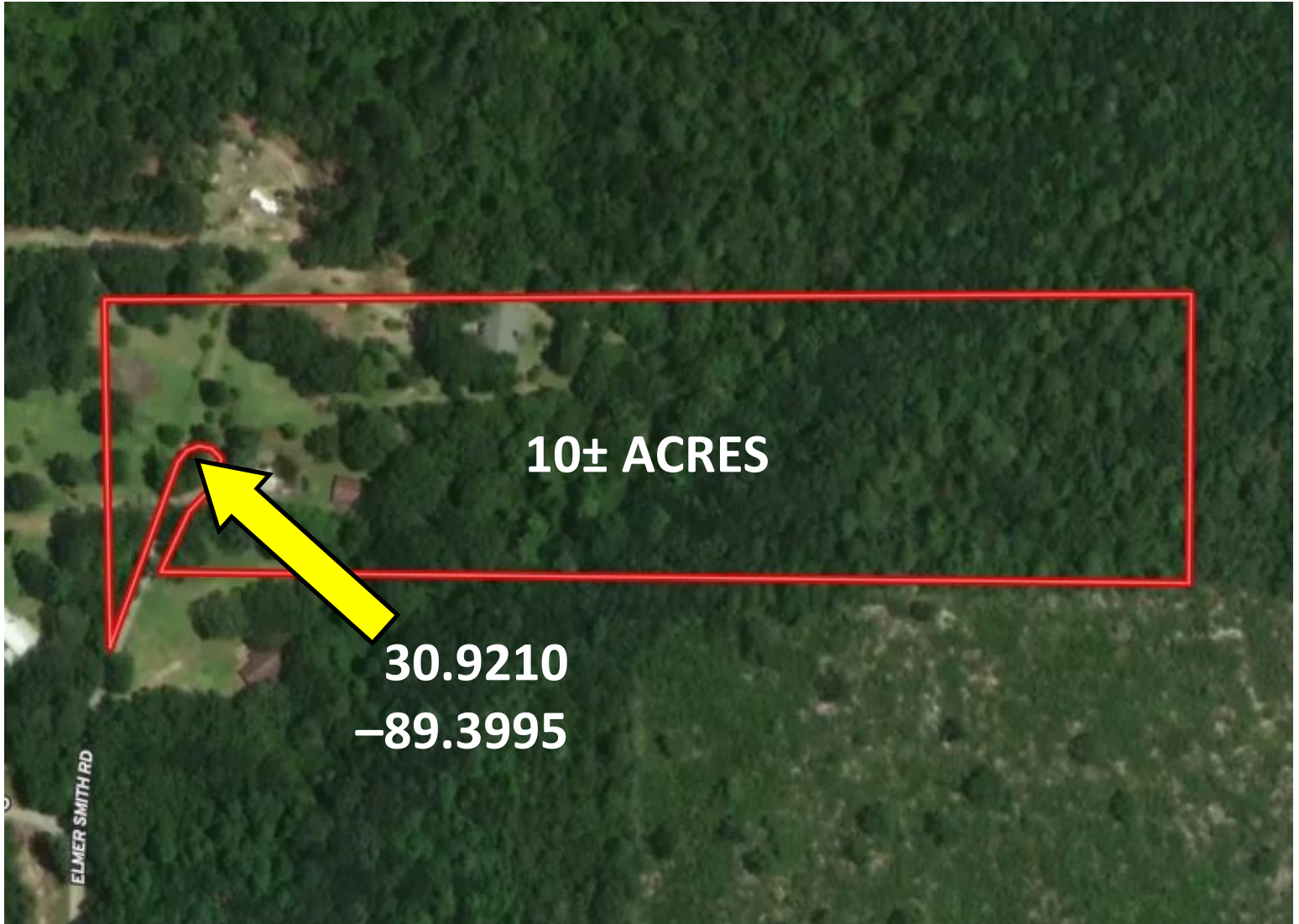
Expect More. Get More.

**TomSmithLandandHomes.com**

Information is believed to be accurate but not guaranteed.



# Aerial Map



## INTERACTIVE MAP

*Call me today!*

**ROBERT SMITH**, REALTOR®  
Robert@TomSmithLand.com  
601.990.5070 office | 769.257.8139 cell



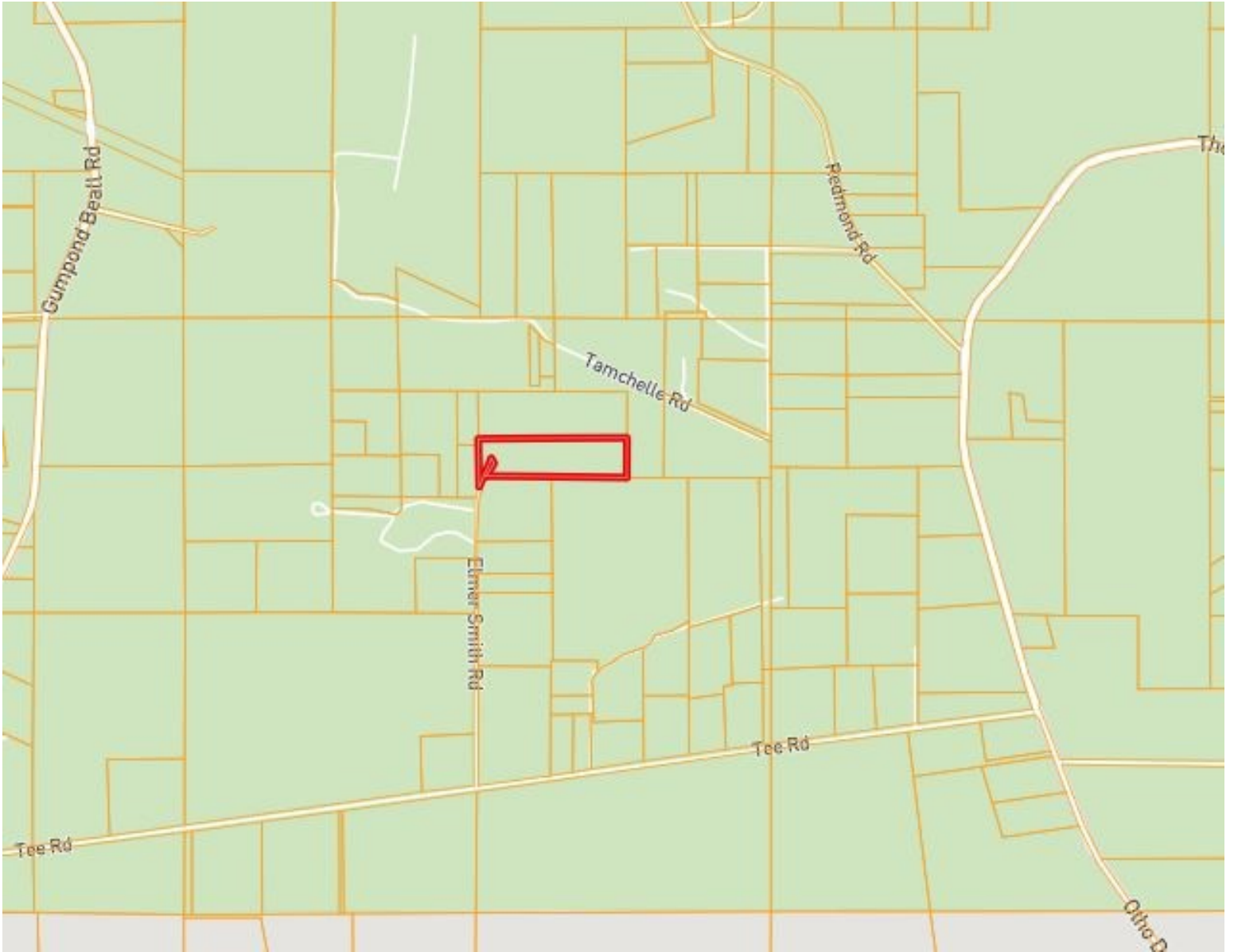
Expect More. Get More.



[TomSmithLandandHomes.com](http://TomSmithLandandHomes.com)

Information is believed to be accurate but not guaranteed.

# Ownership Map



*Call me today!*

**ROBERT SMITH, REALTOR®**  
Robert@TomSmithLand.com  
601.990.5070 office | 769.257.8139 cell

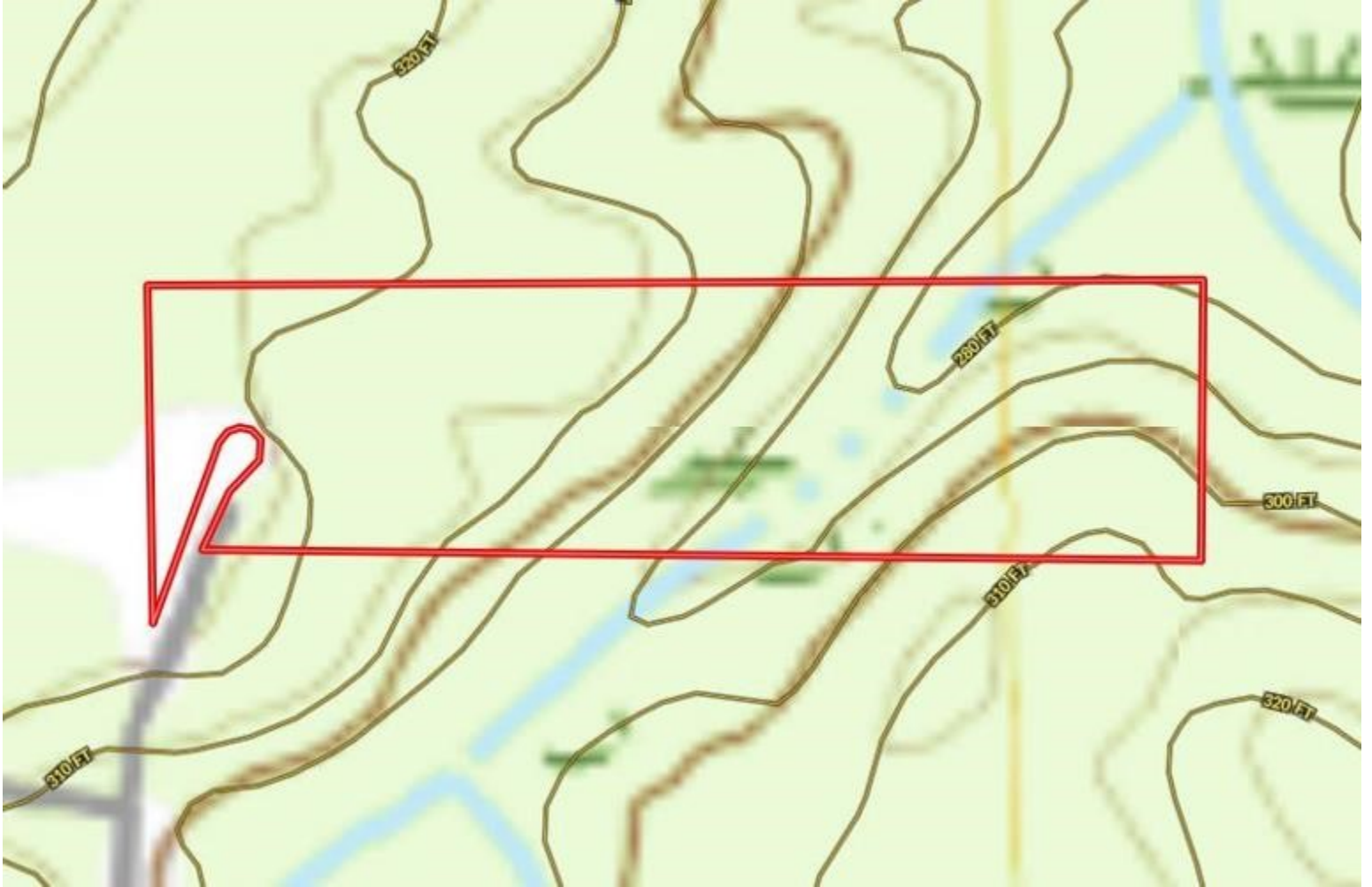


Expect More. Get More.

**TomSmithLandandHomes.com**

Information is believed to be accurate but not guaranteed.

# Topography Map



*Call me  
today!*

**ROBERT SMITH**, REALTOR®  
Robert@TomSmithLand.com  
601.990.5070 office | 769.257.8139 cell



Expect More. Get More.



**TomSmithLandandHomes.com**

Information is believed to be accurate but not guaranteed.

# Flood Map



*Call me today!*

**ROBERT SMITH, REALTOR®**  
Robert@TomSmithLand.com  
601.990.5070 office | 769.257.8139 cell



Expect More. Get More.



**TomSmithLandandHomes.com**

Information is believed to be accurate but not guaranteed.

# Soil Map



*Call me today!*

**ROBERT SMITH**, REALTOR®  
 Robert@TomSmithLand.com  
 601.990.5070 office | 769.257.8139 cell



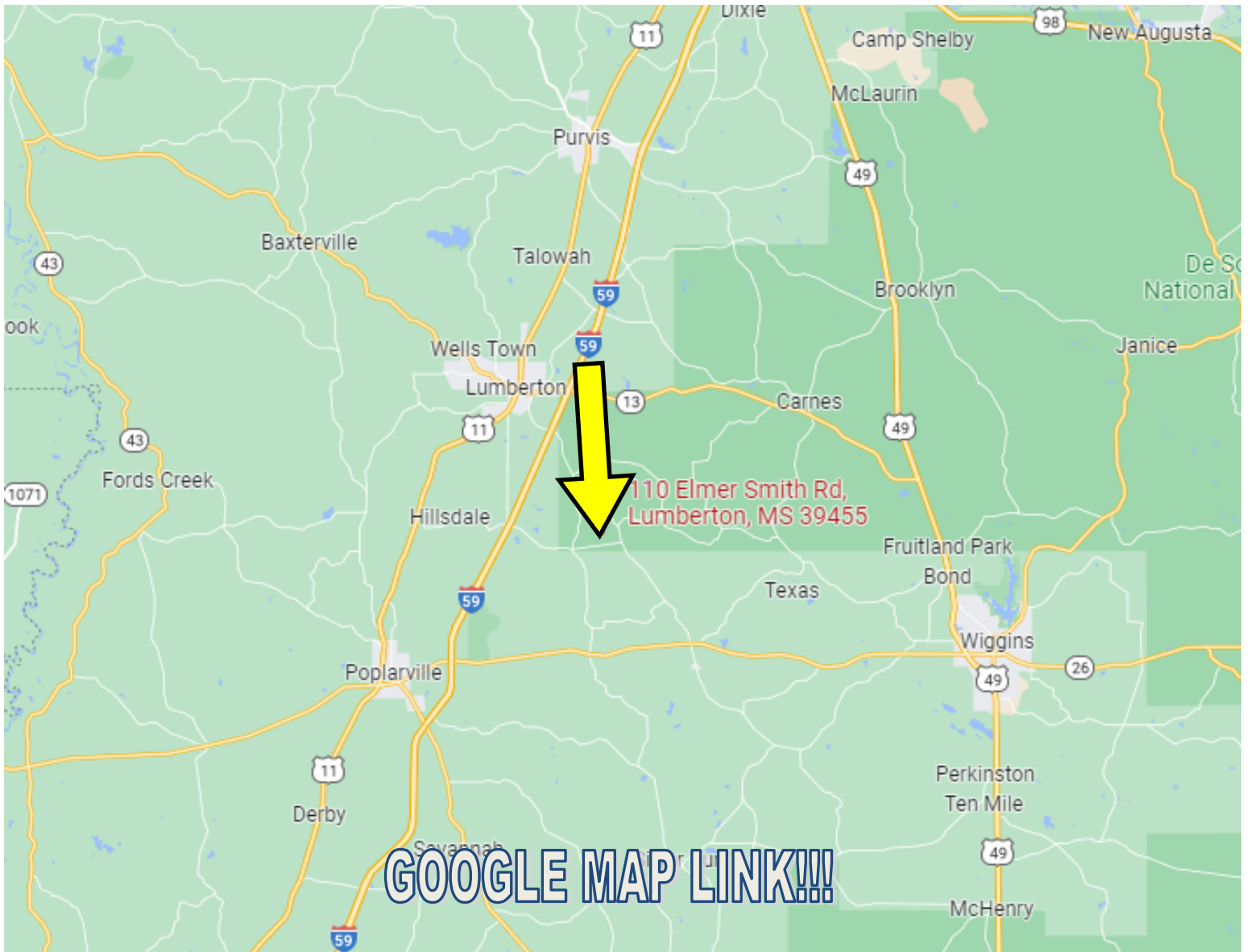
Expect More. Get More.



**TomSmithLandandHomes.com**

Information is believed to be accurate but not guaranteed.

# Directional Map



Directions from Lumberton, MS: Travel South on Gum Pond Rd, in 7.0 miles turn left onto Tee Rd, in 1.0 mile turn left onto Elmer Smith Rd, in .6 miles the property will be on your right. 110 Elmer Smith Rd, Lumberton, MS 39455

*Call me today!*

**ROBERT SMITH, REALTOR®**  
Robert@TomSmithLand.com  
601.990.5070 **office** | 769.257.8139 **cell**



**TomSmithLandandHomes.com**

Information is believed to be accurate but not guaranteed.