

# RECREATIONAL TIMBER TRACT

160± ACRES IN RANKIN COUNTY, MS

\$350,000

If you have been looking for a large recreational tract near Pearl, Brandon and Florence, here it is! This property is conveniently located about a mile south of the intersection of MS-468 and MS-469. It consists of mainly hardwoods and has plentiful deer sign. Don't miss your opportunity to own this large property! Call Bill Patrick for your private showing today!

**DIRECTIONS FROM BRANDON, MS:** Travel 18 East to Hwy 468/Whitfield Road. Travel 4.6 miles and turn left on Hwy 469. After 1.2 miles the entrance to the property will be on your left. **GOOGLE MAP LINK**



*Call me today!*

**BILL PATRICK, REALTOR®**  
Bill@TomSmithLand.com  
601.898.2772 **office** | 601.573.0749 **cell**



Expect More. Get More.

**TomSmithLandandHomes.com**

Information is believed to be accurate but not guaranteed.





*Call me today!*



Expect More. Get More.



**BILL PATRICK, REALTOR®**  
 Bill@TomSmithLand.com  
 601.898.2772 **office** | 601.573.0749 **cell**

**TomSmithLandandHomes.com**

Information is believed to be accurate but not guaranteed.





*Call me today!*

**BILL PATRICK, REALTOR®**

Bill@TomSmithLand.com

601.898.2772 **office** | 601.573.0749 **cell**



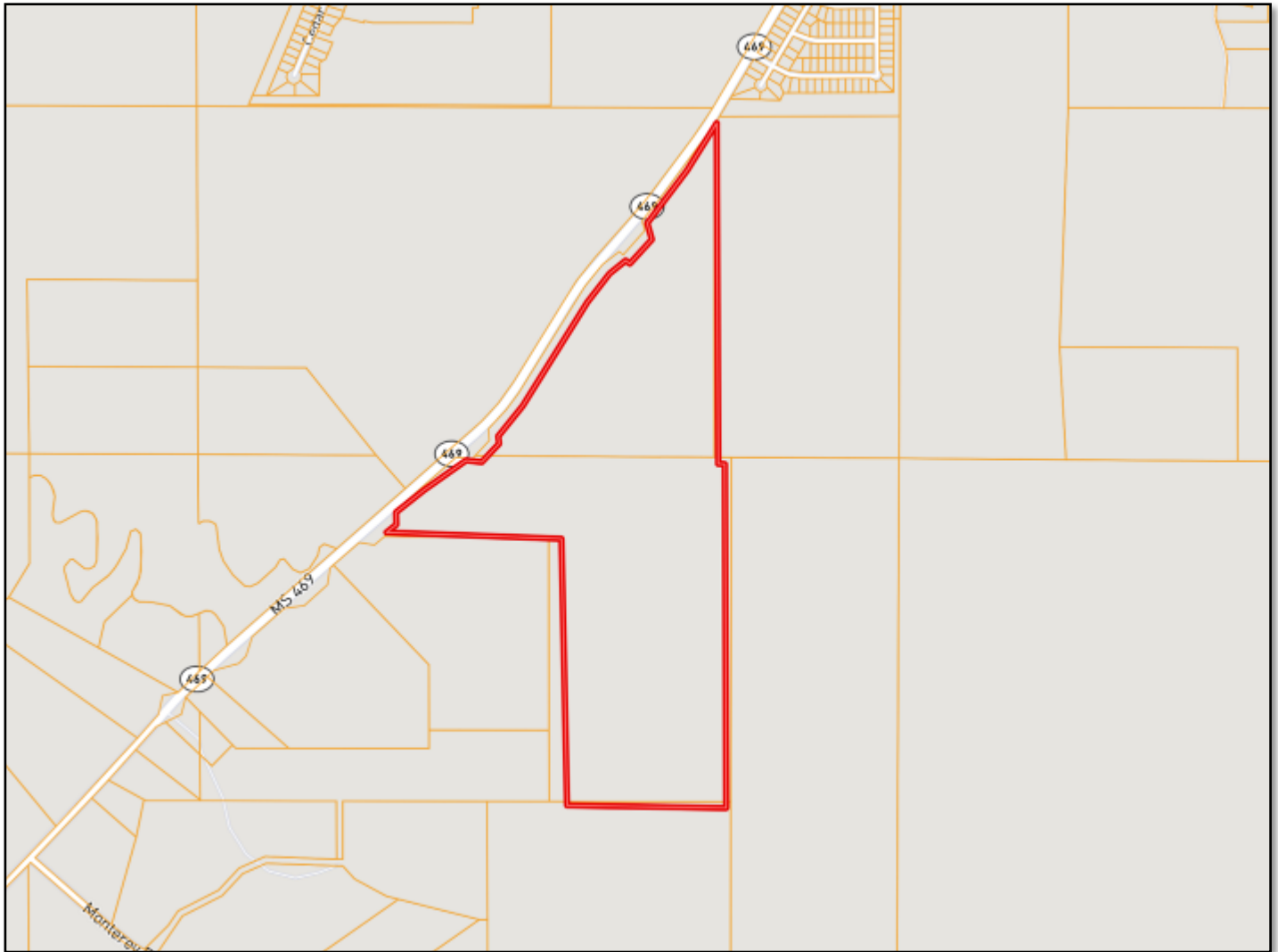
Expect More. Get More.



**TomSmithLandandHomes.com**

Information is believed to be accurate but not guaranteed.

# Ownership Map



*Call me today!*

**BILL PATRICK**, REALTOR®

Bill@TomSmithLand.com

601.898.2772 **office** | 601.573.0749 **cell**



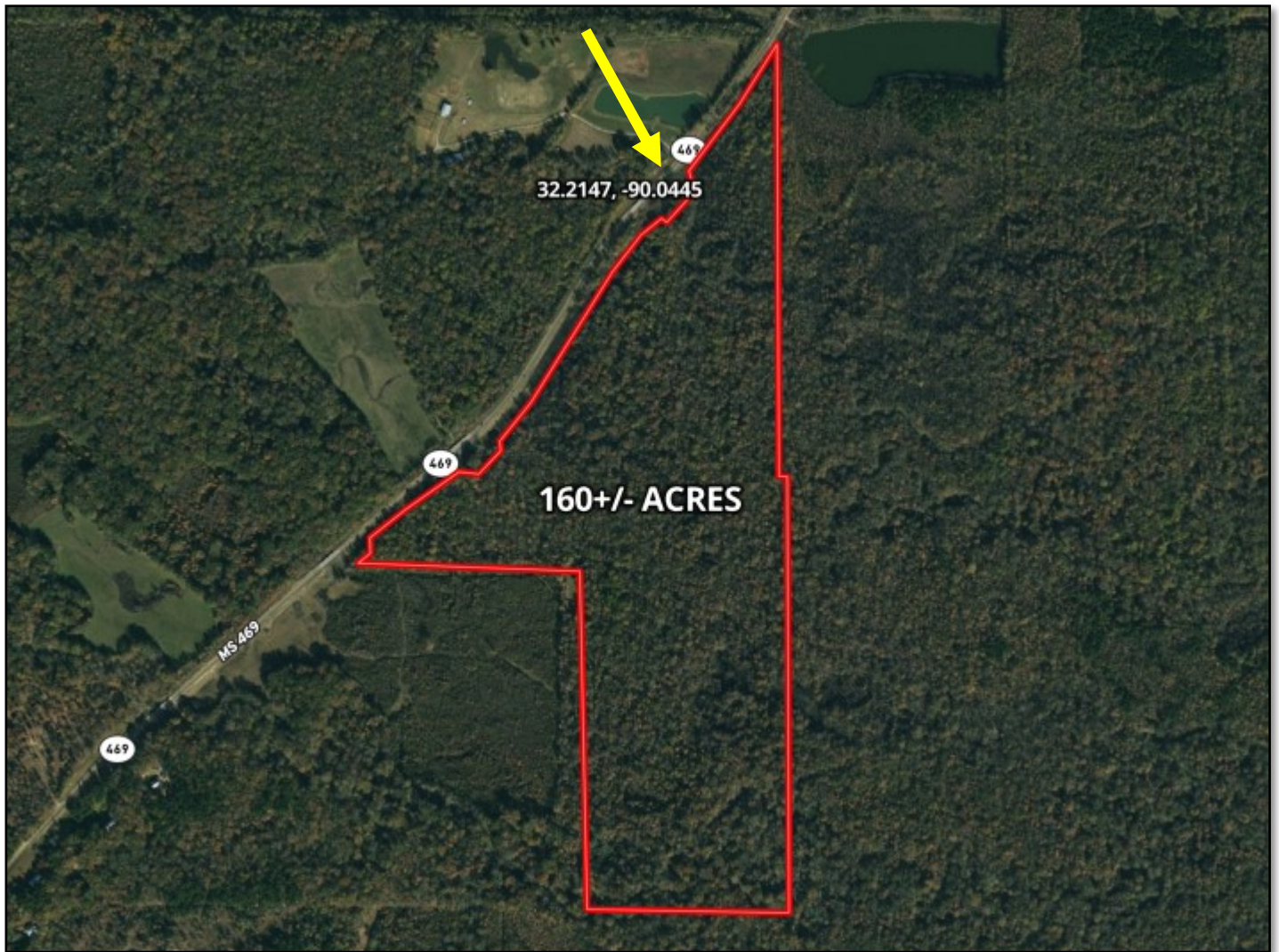
Expect More. Get More.

**TomSmithLandandHomes.com**

Information is believed to be accurate but not guaranteed.



# Aerial Map



Click [HERE](#) for an Interactive Map

*Call me today!*

**BILL PATRICK**, REALTOR®

Bill@TomSmithLand.com

601.898.2772 **office** | 601.573.0749 **cell**

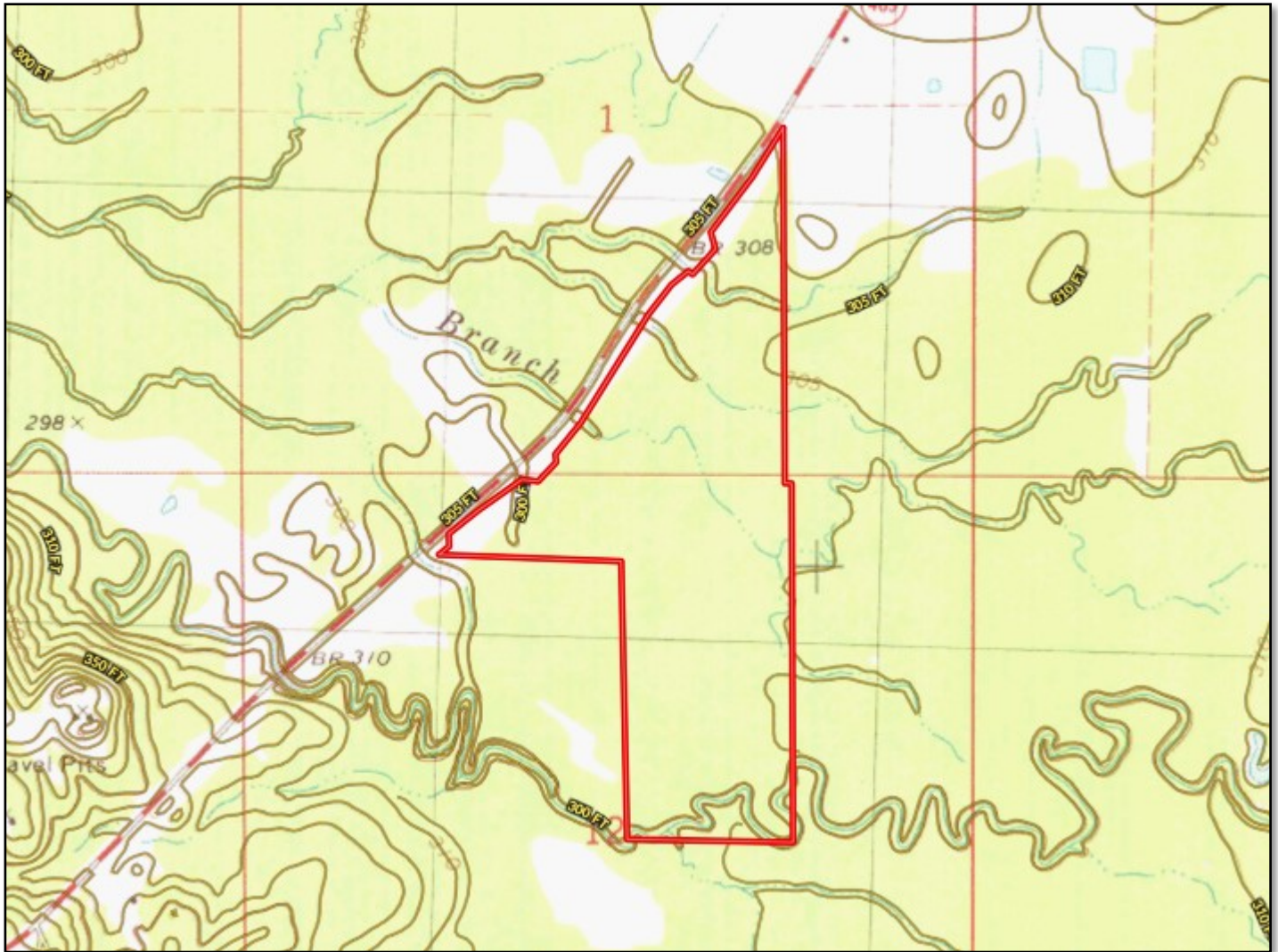


Expect More. Get More.

**TomSmithLandandHomes.com**

Information is believed to be accurate but not guaranteed.

# Topo Map



*Call me today!*

**BILL PATRICK, REALTOR®**

Bill@TomSmithLand.com

601.898.2772 **office** | 601.573.0749 **cell**

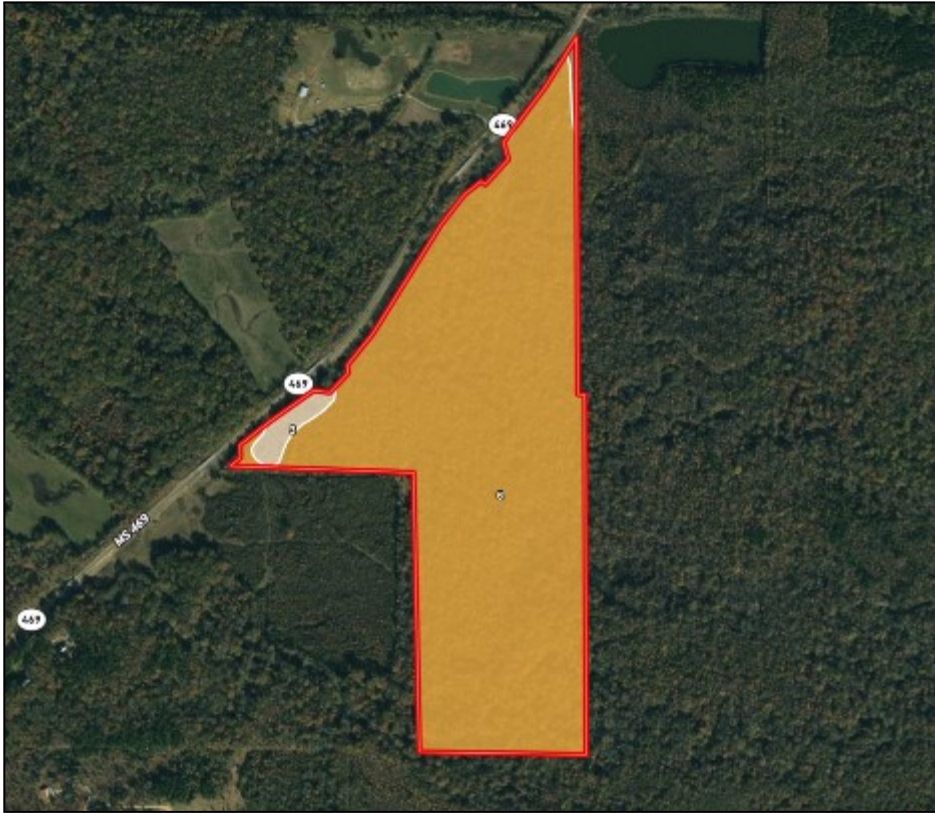


Expect More. Get More.

**TomSmithLandandHomes.com**

Information is believed to be accurate but not guaranteed.





# Soil Map

SOIL CODE	SOIL DESCRIPTION	ACRES	%	CAP
5	Gillsburg silt loam, 0 to 2 percent slopes, occasionally flooded	0.6	0.44	2w
41B2	Providence silt loam, 2 to 5 percent slopes, eroded	0.0	0.03	2e
3	Oaklimer silt loam, 0 to 2 percent slopes, occasionally flooded, north	3.0	2.02	2w
6	Oaklimer-Gillsburg association, frequently flooded	144.6	97.51	4w

*Call me today!*

**BILL PATRICK**, REALTOR®

Bill@TomSmithLand.com

601.898.2772 **office** | 601.573.0749 **cell**

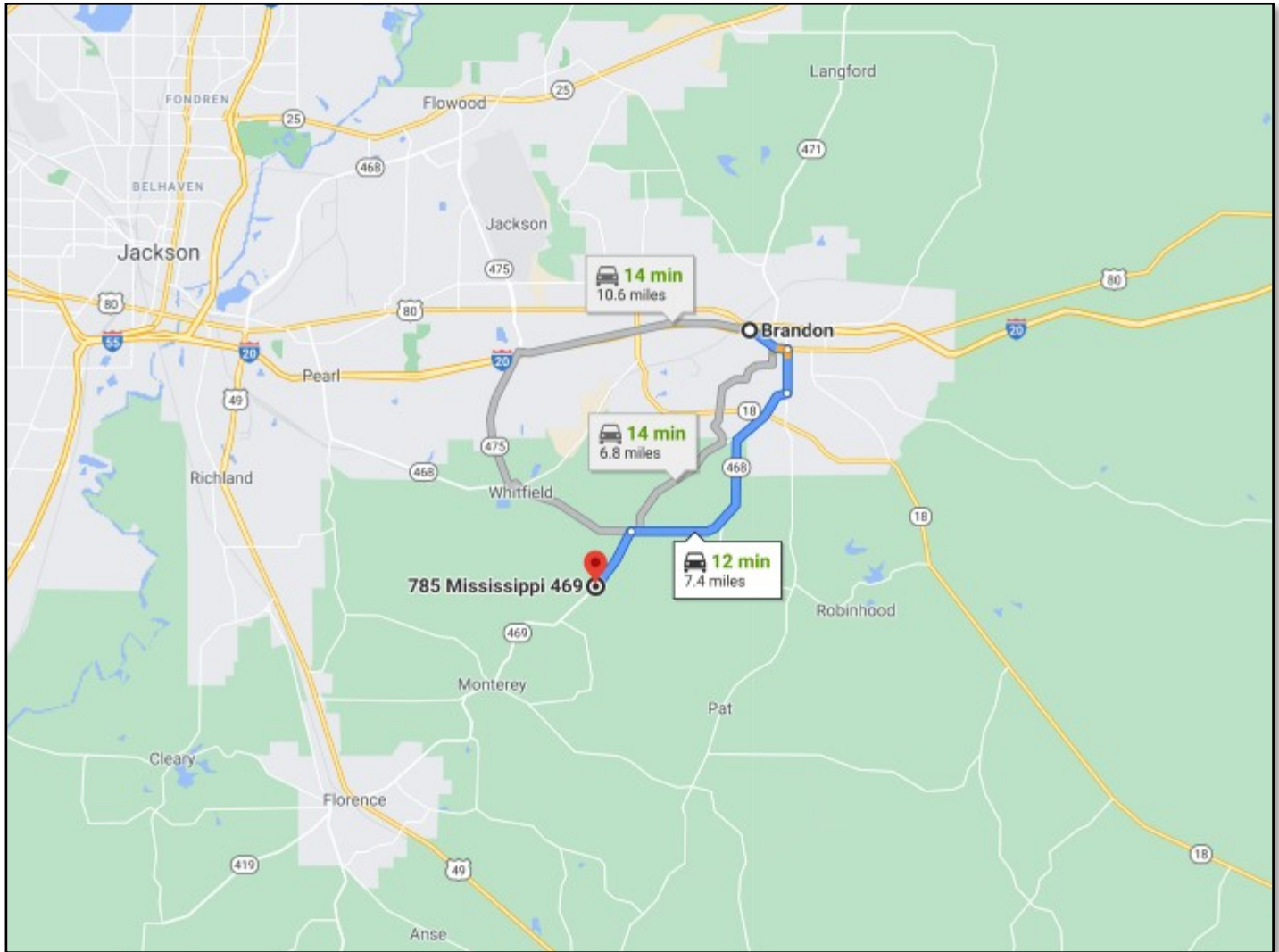


Expect More. Get More.

**TomSmithLandandHomes.com**

Information is believed to be accurate but not guaranteed.

# Directional Map



**DIRECTIONS FROM BRANDON, MS:** Travel 18 East to Hwy 468/Whitfield Road. Travel 4.6 miles and turn left on Hwy 469. After 1.2 miles the entrance to the property will be on your left. [GOOGLE MAP LINK](#)

*Call me today!*

**BILL PATRICK, REALTOR®**

Bill@TomSmithLand.com

601.898.2772 **office** | 601.573.0749 **cell**



Expect More. Get More.

**TomSmithLandandHomes.com**

Information is believed to be accurate but not guaranteed.