

One Equity Share MONTGOMERY ISLAND HUNTING CLUB Desha County, AR



www.MontgomeryIslandHuntingClub.com



MORE THAN
15K
FOLLOWERS
ON FACEBOOK

Call me today!

MICHAEL OSWALT, ASSOCIATE BROKER®

Michael@TomSmithLand.com

601.898.2772 **office** | 662.719.3967 **cell**

Licensed in MS, AR & MO



Expect More. Get More.

TomSmithLandandHomes.com

Information is believed to be accurate but not guaranteed.

One Equity Share in Montgomery Island Hunting Club, Inc. 4,000± Acres on the Mississippi River in Desha County, AR

- 4,000± Acres of PRIME Mississippi River Hunting Land (A True Island)
- 37 Total Shares Owned by 35 Members
- Annual Dues \$3,200 (Includes All Expenses)
- Common Cabin with Multiple Beds
- Additional Areas to Build a Personal Cabin if Desired
- Dirt Airstrip
- Very Family Oriented—Wives and Kids Welcome at All Times!!
- Access to Sandbars for Summer Fun
- Low Pressure Hunting -Trophy Deer, Turkey, Duck, Hogs, Black Bear, and Small Game
- Beautiful Mature Timber
- Good Duck Hunting Depending on MS River Water Levels (no planting or wells)
- Club Barge Available to Transport Hunting Vehicle & Supplies Across the River
- Fenced Area for Member's Trucks at Terrene Landing (Mississippi Side of River)
- Cleaning Shed with Walk-in Cooler
- All Wildlife Plots and Road Work Provided by Full-Time Caretaker (Byron Herron)
- Yearly Wildlife Biologist Deer Survey for Top Notch Management (Mark Barbee)
- Great Fishing on Two Interior Lakes and the River
- Membership Subject to Approval of Club



Montgomery Island Hunting Club, Inc. was incorporated on April 1, 1984, and is located in Desha County, Arkansas approximately 3 miles northwest of Rosedale, Mississippi. The island is bordered on the east by the Mississippi River and the west by the old White River. Shareholders own 4,000± acres of prime hunting land accessed by boat across the Mississippi River or air using the club's landing strip. Club members and their families enjoy the island's numerous amenities while making memories and enjoying the outdoors. Montgomery Island accommodates incredible trophy deer, turkey, duck, and small game hunting. The island's lakes and the Mississippi River provide members the opportunity to fish year-round. If you want to really "get away from it all at the hunting camp", this island hunting club experience could be exactly what you need. In doing your research, you will find this is one of the most affordable equity clubs on the river. Call Michael Oswalt for your private tour today!



MORE THAN
15K
FOLLOWERS
ON FACEBOOK

Call me today!

MICHAEL OSWALT, ASSOCIATE BROKER®

Michael@TomSmithLand.com

601.898.2772 **office** | 662.719.3967 **cell**

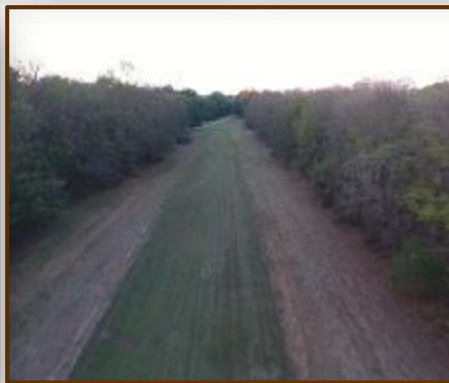
Licensed in MS, AR & MO



Expect More. Get More.

TomSmithLandandHomes.com

Information is believed to be accurate but not guaranteed.



MORE THAN 15K FOLLOWERS ON FACEBOOK

Call me today!

MICHAEL OSWALT, ASSOCIATE BROKER®
Michael@TomSmithLand.com
601.898.2772 office | 662.719.3967 cell
Licensed in MS, AR & MO

Tom Smith
LAND AND HOMES
Expect More. Get More.



TomSmithLandandHomes.com

Information is believed to be accurate but not guaranteed.



MORE THAN 15K FOLLOWERS ON FACEBOOK

Call me today!

MICHAEL OSWALT, ASSOCIATE BROKER®

Michael@TomSmithLand.com

601.898.2772 office | 662.719.3967 cell

Licensed in MS, AR & MO



Expect More. Get More.



TomSmithLandandHomes.com

Information is believed to be accurate but not guaranteed.



MORE THAN 15K FOLLOWERS ON FACEBOOK

Call me today!

MICHAEL OSWALT, ASSOCIATE BROKER®
Michael@TomSmithLand.com
601.898.2772 office | 662.719.3967 cell
Licensed in MS, AR & MO



TomSmithLandandHomes.com

Information is believed to be accurate but not guaranteed.



MORE THAN 15K FOLLOWERS ON FACEBOOK

Call me today!

MICHAEL OSWALT, ASSOCIATE BROKER®
Michael@TomSmithLand.com
601.898.2772 office | 662.719.3967 cell
Licensed in MS, AR & MO



TomSmithLandandHomes.com

Information is believed to be accurate but not guaranteed.



MORE THAN 15K FOLLOWERS ON FACEBOOK

Call me today!

MICHAEL OSWALT, ASSOCIATE BROKER®
Michael@TomSmithLand.com
601.898.2772 office | 662.719.3967 cell
Licensed in MS, AR & MO



Expect More. Get More.

TomSmithLandandHomes.com

Information is believed to be accurate but not guaranteed.

AERIAL MAP



[Interactive Map](#)

[Google Earth Map](#)



MORE THAN
15K
FOLLOWERS
ON FACEBOOK

Call me today!

MICHAEL OSWALT, ASSOCIATE BROKER®

Michael@TomSmithLand.com

601.898.2772 **office** | 662.719.3967 **cell**

Licensed in MS, AR & MO



Expect More. Get More.

TomSmithLandandHomes.com

Information is believed to be accurate but not guaranteed.

DIRECTIONAL MAP



Property only accessed by boat or plane. Call for showing.



MORE THAN
15K
FOLLOWERS
ON FACEBOOK

Call me today!

MICHAEL OSWALT, ASSOCIATE BROKER®

Michael@TomSmithLand.com

601.898.2772 **office** | 662.719.3967 **cell**

Licensed in MS, AR & MO



Expect More. Get More.

TomSmithLandandHomes.com

Information is believed to be accurate but not guaranteed.